

IF IT IS FOUND DESIRABLE TO CHANGE ANY TOLERANCE OR OTHER DETAIL SPECIFIED ON THIS DRAWING NOTIFY THE PURCHASER PROMPTLY.

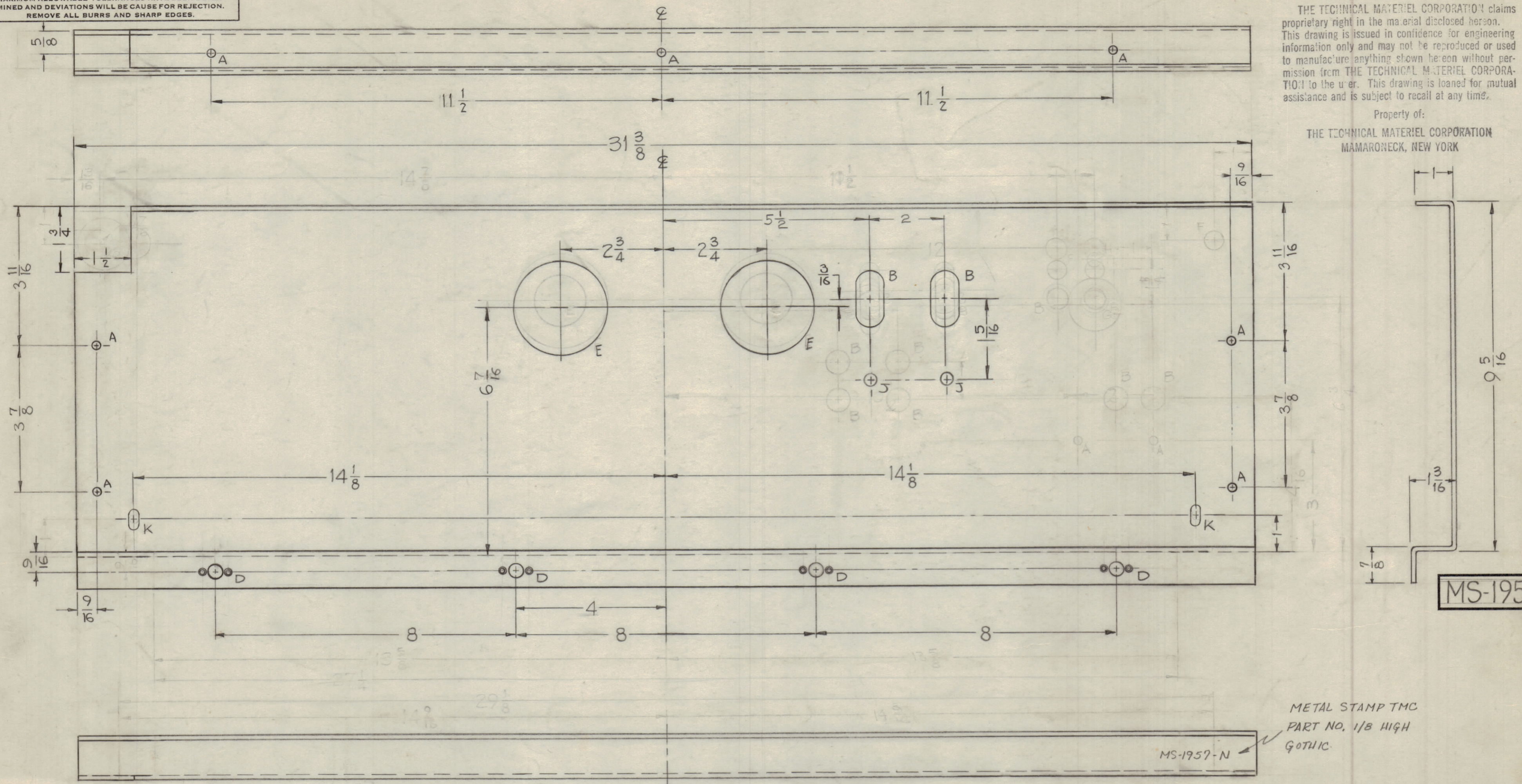
MAXIMUM ALLOWABLE TOLERANCES HAVE BEEN DETERMINED AND DEVIATIONS WILL BE CAUSE FOR REJECTION. REMOVE ALL BURRS AND SHARP EDGES.

NOTICE TO PERSONS RECEIVING THIS DRAWING

THE TECHNICAL MATERIEL CORPORATION claims proprietary right in the material disclosed herein. This drawing is issued in confidence for engineering information only and may not be reproduced or used to manufacture anything shown hereon without permission from THE TECHNICAL MATERIEL CORPORATION to the user. This drawing is loaned for mutual assistance and is subject to recall at any time.

Property of:

THE TECHNICAL MATERIEL CORPORATION
MAMARONECK, NEW YORK

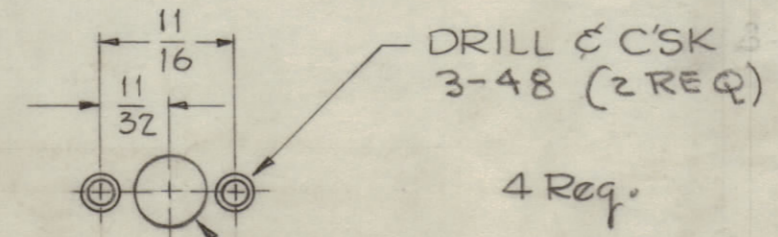


MS-1957-N

METAL STAMP TMC
PART NO. 1/8 HIGH
GOTHIC.

REV	DESCRIPTION	DATE	BY	CHKD
1	218) SLATS WERE 7/8 DIA	1-17-62	JL	JK
2	1 3/4" HOLE WAS 7/8" NOTCH	1-17-62	JL	JK
3	TYPE TEMPER WAS 2024-T3	2/8/62	JL	JK
4	(2) J HOLES ADDED	1/27/62	JL	JK
5	NEED 1/8" HOLE DELETED	3/28/62	JL	JK
6	NOTCH ADDED	4-12-62	JL	JK
7	1/8" HOLE 1/4" ADDED	5-1-62	JL	JK
8	1/8" HOLE 1/2" ADDED	5-1-62	JL	JK
9	28 HOLES DELETED	5-1-62	JL	JK
10	37 HOLES DELETED	5-1-62	JL	JK
11	4 BUSHING/DIMES 3/4" DIA.	5-1-62	JL	JK
12	1/8" WAS 3/4"	5-1-62	JL	JK
13	3/16" WAS 5/16"	5-1-62	JL	JK
14	1 1/2" WAS 1 1/8"	5-1-62	JL	JK
E	ADDED (2) A HOLES	4-20-62	JL	JK
D	ADD 2 B HOLES	4-4-62	JL	JK
C	TWO F HOLES ADDED	3-10-62	JL	JK
B	ONE F HOLE ADDED	3-4-62	JL	JK
N	SIDE VIEW, 7/8 DIM. WAS 1"	11-12-62	JL	JK

- HOLES~
- A ~ 13/64 (.203) DIA. 7 Req.
 - B ~ 3/4 x 1-1/2 SLOTE 2 Req.
 - C ~ 1/8 DIA. 2 Req.
 - D ~ 3/8 (375) DIA. 4 Req.
 - E - 2 1/2 (2.500) DIA. 2 Req.
 - F - 1/2 DIA DELETED 1 REQ.
 - G - 1-1/2 DIA. DELETED 1 REQ.
 - H - 11/64 DIA. DELETED 1 REQ.
 - J - 3/8 DIA 2 REQ.
 - K - 13/64 x 13/32 SLOT 2 REQ.



NOTE
ALL BENDS 1/8 RADIUS

REF: LD-685

REQ. ITEM	PART NO.	DESCRIPTION	SYMBOL
	1/8 THICK	THE TECHNICAL MATERIEL CORP. MAMARONECK, NEW YORK	
	ALUMINUM	BRACKET, TOP METER SHIELD (PA SECTION)	
	5052-H32	J.C. Bielg	JK
		DRAWN	ELEC. DES. APP. MECH. DES. APP.
		HEAT TREAT. SPEC.	FINAL APPROVAL
		FINISH & SPEC. NO.	MS-1957-N

UNLESS OTHERWISE SPECIFIED
DIMENSIONS ARE IN INCHES AND INCLUDE
CHEMICALLY APPLIED OR PLATED FINISHES

DECIMALS: X ± .05, XX ± .01, XXX ± .005
FRACTIONS: ± 1/64, ANGLES: ± 0° 30'

REQ. PER UNIT	MODEL	PROJECT NO.	ASSY. NO.	DATE
1	AX-209	GPT40K		1-20-60
				USED ON