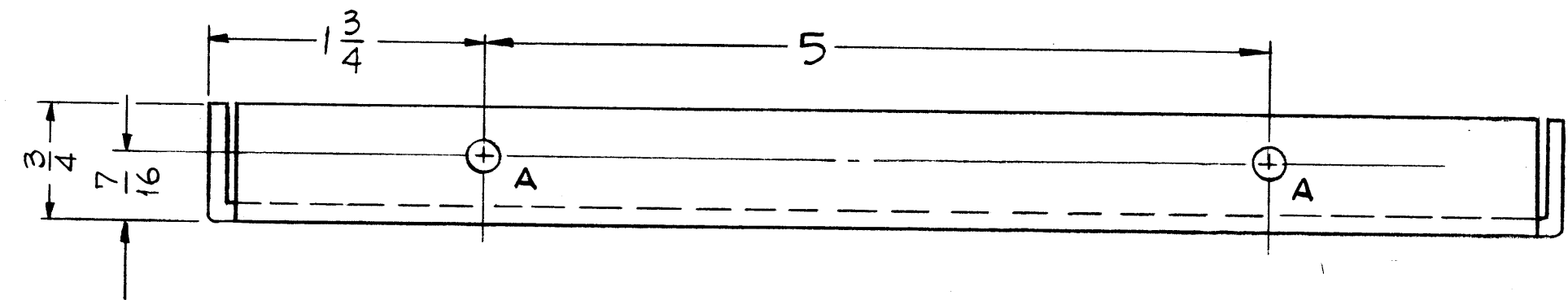
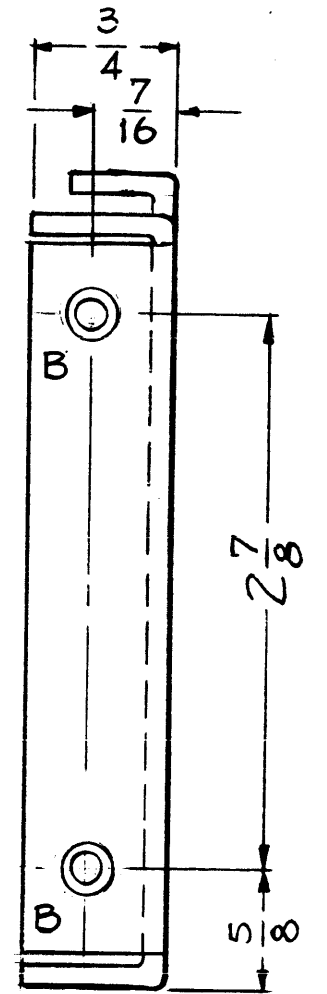
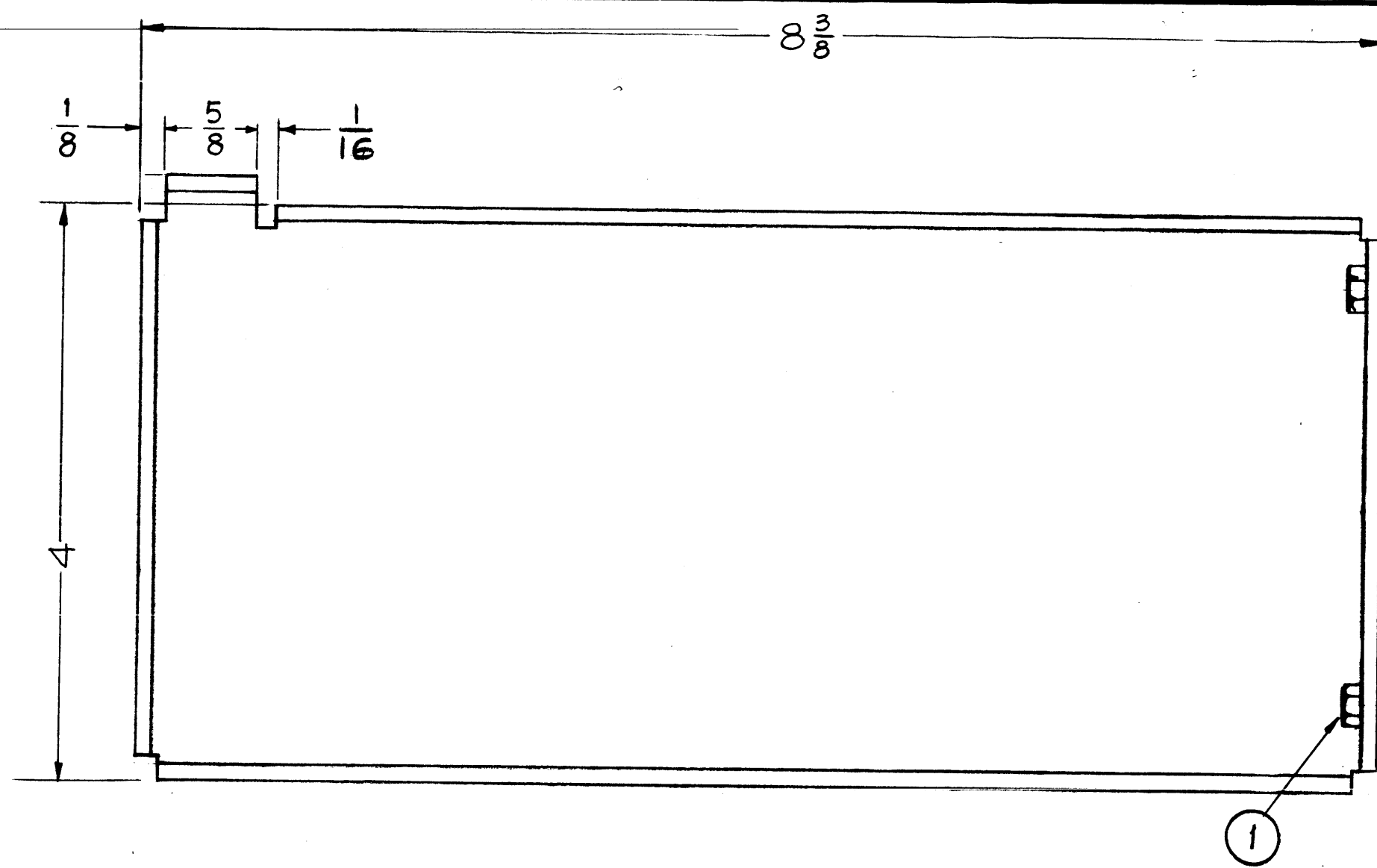
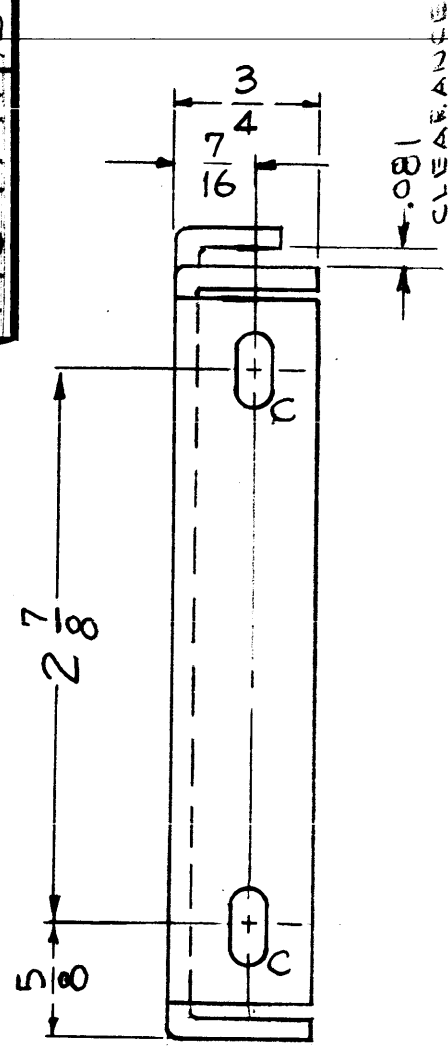


MS-1949 B



NOTICE TO PERSONS RECEIVING THIS DRAWING

THE TECHNICAL MATERIEL CORPORATION claims proprietary right in the material disclosed hereon. This drawing is issued in confidence for engineering information only and may not be reproduced or used to manufacture anything shown hereon without permission from THE TECHNICAL MATERIEL CORPORATION to the user. This drawing is loaned for mutual assistance and is subject to recall at any time.

Property of:
THE TECHNICAL MATERIEL CORPORATION
MAMARONECK, NEW YORK

ISSUE	ITEM	CHANGED FROM	DATE	CH. NO.	DRAFTS	CHECKER	ENG. APP.
B	1	"C" SLOT WAS 7/32 X 3/8	11-2-60	3361	WF	JDe	JB
A	1	"C" SLOT WAS 3/16 X 3/8	8-18-60	2797	RU	JCH	alt

TOLERANCES: DEC. DIM. ±, FRAC. DIM. ± 1/64, ANGULAR DIM. ±

SCALE: MAXIMUM ALLOWABLE TOLERANCES HAVE BEEN DETERMINED AND ANY DEVIATIONS WILL BE CAUSE FOR REJECTION. REMOVE ALL BURRS AND SHARP EDGES

HOLES ~
A ~ 7/32 (.218) DIA. ~ 2 Req.
B ~ SEE DETAIL ~ 2 Req.
C ~ 3/16 X 3/8 SLOTS ~ 2 Req.

REQ. PER UNIT	AX-209	GPT 40K	ASS'Y. NO.	DATE
	MODEL	PROJECT NO.		
				1-14-60

USED ON

2	1	SM-107-34	INSERT, HEX (8-32)	
REQ. ITEM	PART NO.		DESCRIPTION	SYMBOL
	.081		STOCK SIZE	
	ALUMINUM		MATERIAL	
	5052-H32		TYPE & TEMPER	
			HEAT TREAT. SPEC.	
	S4D4		IRIDITE	
			FINISH & SPEC. NO.	
	J.C. Biele		DRAWN	CHECKED
			ELEC. DES. APP.	MECH. DES. APP.
				MS-1949 B