

IF IT IS FOUND DESIRABLE TO CHANGE ANY TOLERANCE OR OTHER DETAIL SPECIFIED ON THIS DRAWING NOTIFY THE PURCHASER PROMPTLY.
 MAXIMUM ALLOWABLE TOLERANCES HAVE BEEN DETERMINED AND DEVIATIONS WILL BE CAUSE FOR REJECTION. REMOVE ALL BURRS AND SHARP EDGES

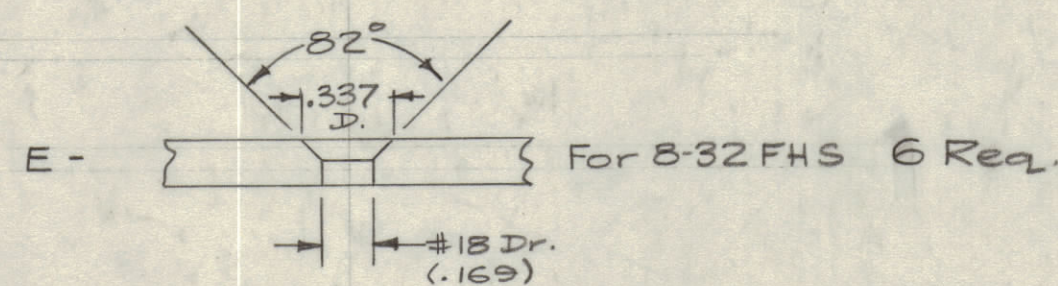
NOTICE TO PERSONS RECEIVING THIS DRAWING

THE TECHNICAL MATERIEL CORPORATION claims proprietary right in the material disclosed herein. This drawing is issued in confidence for engineering information only and may not be reproduced or used to manufacture anything shown hereon without permission from THE TECHNICAL MATERIEL CORPORATION to the user. This drawing is loaned for mutual assistance and is subject to recall at any time.

Property of:

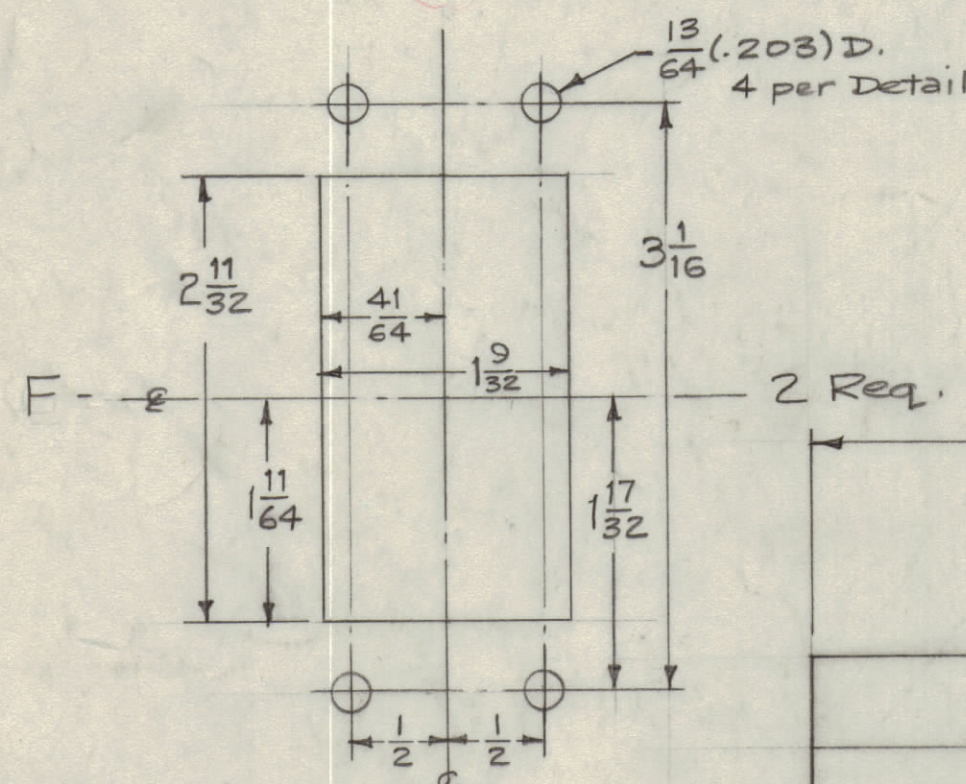
THE TECHNICAL MATERIEL CORPORATION
 MAMARONECK, NEW YORK

- A - $\frac{13}{64}$ (.203) D. 3 Req.
- B - $\frac{3}{8}$ (.375) D. 2 Req.
- C - $\frac{1}{2}$ (.500) D. 4 Req.
- D - $\frac{11}{16}$ (.687) D. 2 Req.

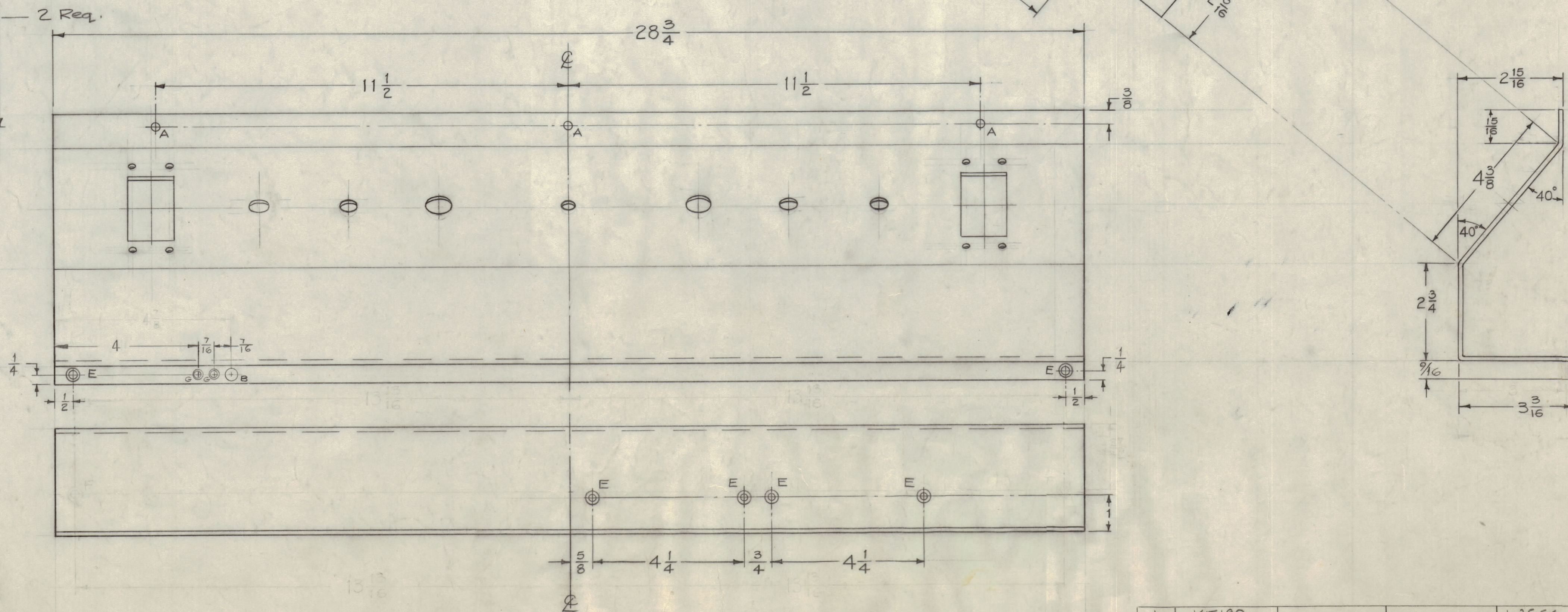
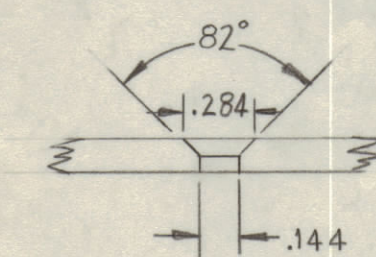


F - SEE DETAIL 2 REQ

G - SEE DETAIL 2 REQ



DETAIL-G
 DRILL & C.SINK
 FOR 6-32 FHS



- MACHINING ~
- 1~ LATERAL BOW OF PANEL MUST BE KEPT TO .031 TOLERANCE.
 - 2~ MILL ALL EDGES.
 - 3~ HOLES MUST BE DRILLED.
 - 4~ PANEL MUST BE FREE OF ALL MACHINING MARKS, GOUGES, AND SCRATCHES. IF NECESSARY, SAND FRONT OF PANEL WITH NO. 120 GRIT SANDPAPER.
- FINISH ~
- S404 YELLOW IRIDITE
 S114 ZINC CHROMATE PRIMER } FRONT & EDGES ONLY
 S115 TMC SMOOTH GREY ENAMEL }

D	DELE. LD 673 REF.	3-1-67	17800	RME	
C	CLERICAL CHANGE	1-25-64		NLA	
B	2 1" B & 2" G HOLES ADDED	10-1-61	3281		
B	1 DIM. 9/16 WAS 1/2 1/4 WAS 3/16	6-6-61			
A	1 ONE "C" HOLE ADDED	2-3-60	1834		
ISSUE	ITEM	CHANGED FROM	DATE	CN. NO.	DRAFTS
TOLERANCES					
SCALE: HALF					
ALL DEC. DIM. ± 1/64			DRILL, PUNCH, COMMERCIAL STOCK SIZES AND MANUFACTURERS TOLERANCES ARE NOT INCLUDED.		
OTHERS ANGULAR DIM. ±					

1	KIT180			1-25-66
1	AX-210	GPT-40K		1-13-60
REQ PER UNIT	MODEL	PROJECT NO.	ASSY. NO.	DATE
USED ON				

REF: LD 672
 LD 2042

REQ. ITEM	PART NO.	DESCRIPTION	SYMBOL
1/8 Thick		THE TECHNICAL MATERIEL CORP. MAMARONECK, NEW YORK	
Aluminum		PANEL, FRONT	
MATERIAL	WEIGHT PER PC.	(MAIN CONTROL PANEL, PA FRAME)	
5052-H32		1-13-60	
TYPE & TEMPER		DRAWN	ELEC. DES. APP.
11			
HEAT TREAT. SPEC.		CHECKED	FINAL APPROVAL
See Note			
FINISH & SPEC. NO.			MS 1947 D

MS 1947 D