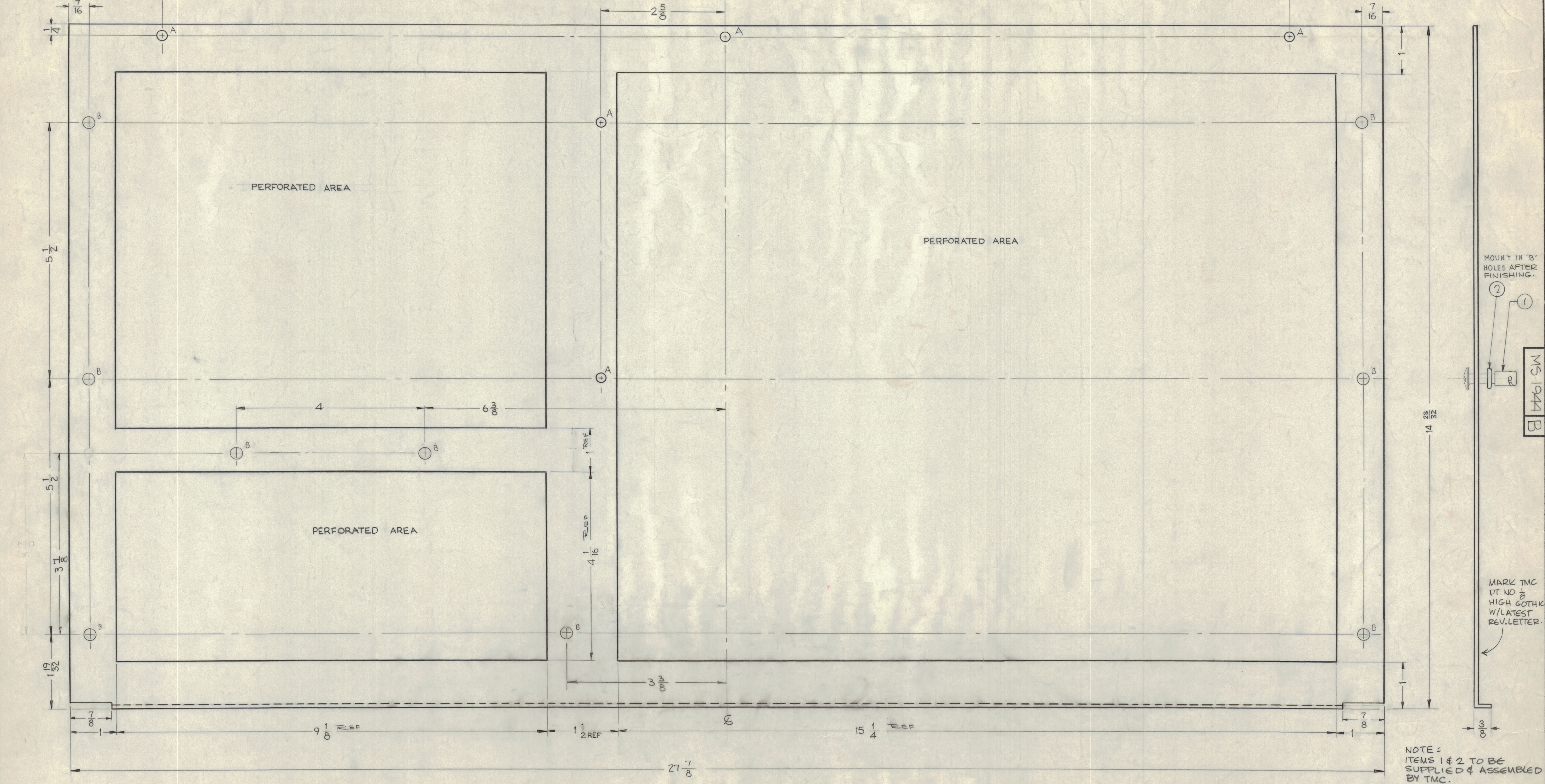


IF IT IS FOUND DESIRABLE TO CHANGE ANY TOLERANCE OR OTHER DETAIL SPECIFIED ON THIS DRAWING NOTIFY THE PURCHASER PROMPTLY.  
 MAXIMUM ALLOWABLE TOLERANCES HAVE BEEN DETERMINED AND DEVIATIONS WILL BE CAUSE FOR REJECTION. REMOVE ALL BURRS AND SHARP EDGES



B	ADD. IT. 1 & 2 TMC P/N # 1000	3-3-67	17875	MLA			
A	NINE 'A' HOLES (4/16) FOR DZUS FASTENERS ADDED	2-1-69	1825	MLA	16/10/69		
A	NINE 'A' HOLES DELETED						
ISSUE	ITEM	CHANGED FROM	DATE	CN. NO.	DRAFTS	CHECKER	ENG. APP.
TOLERANCES		SCALE:					
ALL DEC. DIM. ±		DRILL, PUNCH, COMMERCIAL STOCK					
OTHERS FRACTIONAL DIM. ±		SIZES AND MANUFACTURERS					
		TOLERANCES ARE NOT INCLUDED.					

HOLES  
 A ~ 7/32 (.218) DIA. REQ. 5  
 B ~ 1/4 (.250) D. 9

NOTICE TO PERSONS RECEIVING THIS DRAWING  
 THE TECHNICAL MATERIEL CORPORATION claims proprietary right in the material disclosed herein. This drawing is issued in confidence for engineering information only and may not be reproduced or used to manufacture anything shown hereon without permission from THE TECHNICAL MATERIEL CORPORATION to the user. This drawing is loaned for mutual assistance and is subject to recall at any time.  
 Property of:  
 THE TECHNICAL MATERIEL CORPORATION  
 MAMARONECK, NEW YORK

NOTE  
 PERFORATION .150 D. HOLES  
 ON 3/16 CENTERS (STAGGERED).  
 REF. BLANK SIZE MS194G

9	2	FS109-3	RING, RETAINING	
9	1	FS110-7	STUD, TURNLOCK	
REQ. ITEM	PART NO.		DESCRIPTION	SYMBOL
.064 THK.			THE TECHNICAL MATERIEL CORP.	
STOCK SIZE			MAMARONECK, NEW YORK	
ALUMINUM			COVER, TOP	
MATERIAL			(CROW BAR DRAWER)	
5052-H32			DRAWN	
TYPE & TEMPER			ELEC. DES. APP.	
HEAT TREAT. SPEC.			MECH. DES. APP.	
6404 IRIDITE			CHECKED	
FINISH & SPEC. NO.			FINAL APPROVAL	
			MS 1944 B	

1	GPT-40K	AX-212		1-15-60
REQ PER UNIT	MODEL	PROJECT NO.	ASSY. NO.	DATE
USED ON				