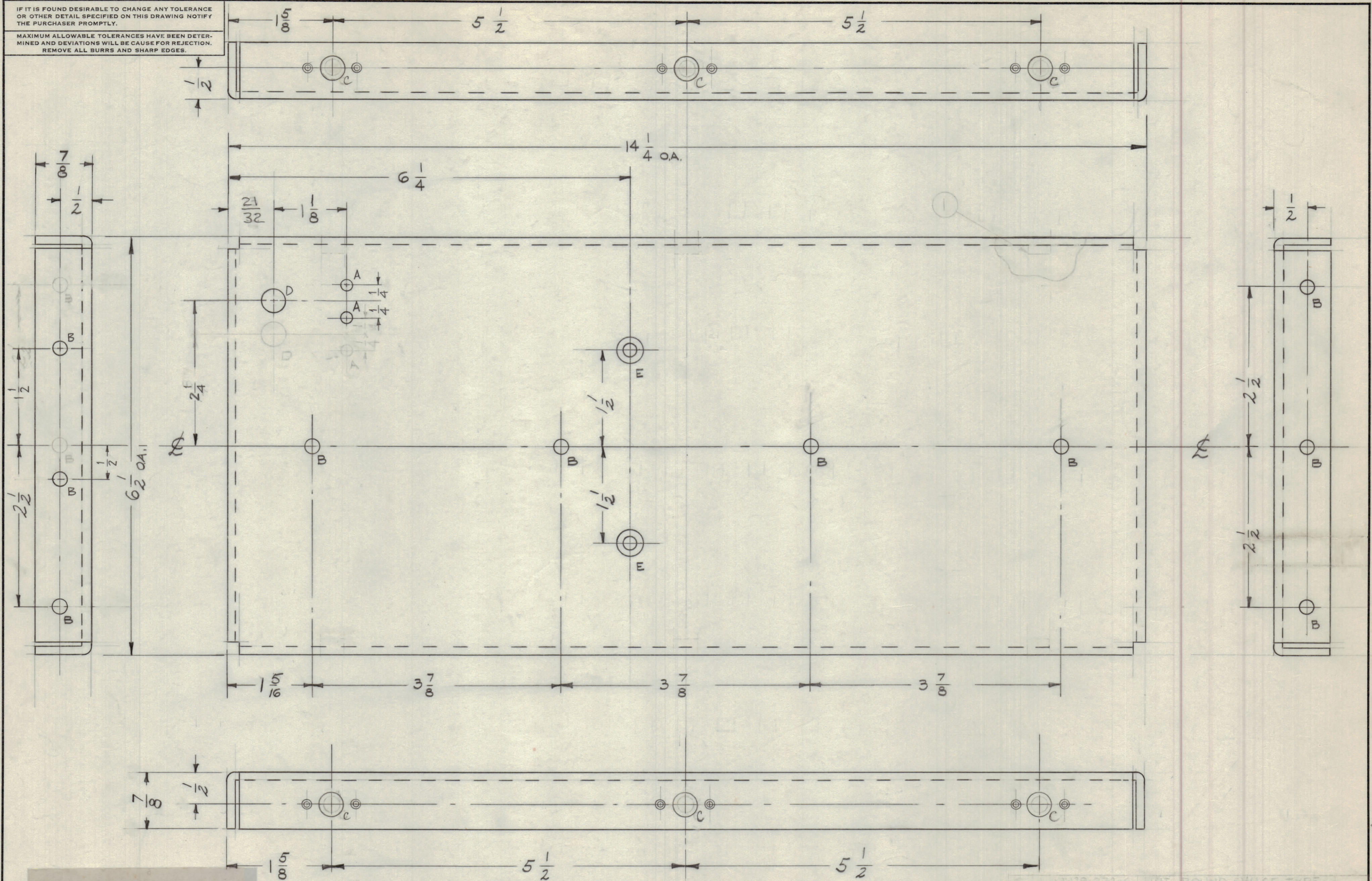


IF IT IS FOUND DESIRABLE TO CHANGE ANY TOLERANCE OR OTHER DETAIL SPECIFIED ON THIS DRAWING NOTIFY THE PURCHASER PROMPTLY.

MAXIMUM ALLOWABLE TOLERANCES HAVE BEEN DETERMINED AND DEVIATIONS WILL BE CAUSE FOR REJECTION. REMOVE ALL BURRS AND SHARP EDGES.



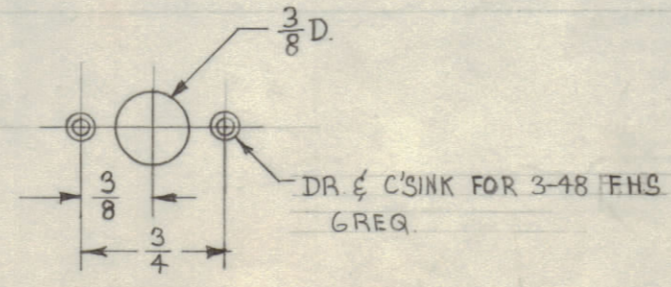
UNLESS OTHERWISE SPECIFIED DIMENSIONS ARE IN INCHES AND INCLUDE CHEMICALLY APPLIED OR PLATED FINISHES

DECIMALS	FRACTIONS
.X ± .05	± 1/64
.XX ± .01	ANGLES ± 0° 30'
.XXX ± .005	

TOLERANCES

CUT HERE GUARANTEED 2-48

- A - 11/64 (.171) D 2 REQ'D
- B - 7/32 (.218) 10 "
- C -
- D - 3/8 - (.375) D 1 "
- E - DRILL & C'SINK FOR 10-32 FSH 2 "



ISSUE	ITEM	CHANGED FROM	DATE	CH. NO.	DRAFTS	CHECKER	ENG. APP.
A	2	DETAIL WAS 221-224 D.	2-1-60	1825	MJG	JLQ	KDP
	1	NT-129's DELETED					

TOLERANCES		SCALE:
ALL	DEC. DIM. ±	DRILL, PUNCH, COMMERCIAL STOCK SIZES AND MANUFACTURERS TOLERANCES ARE NOT INCLUDED.
OTHERS	FRACTIONAL DIM. ±	
	ANGULAR DIM. ±	

REQ. PER UNIT	MODEL	PROJECT NO.	ASSY. NO.	DATE
1	AX-212	GPT-40K		1-12-60

REQ. ITEM	PART NO.	DESCRIPTION	SYMBOL
1/B		THE TECHNICAL MATERIEL CORP. MAMARONECK, NEW YORK	
ALUMINUM		SIDE PLATE, RIGHT (CROWBAR DRAWER)	
5052-H32			
TYPE & TEMPER			
HEAT TREAT. SPEC.			
8404 YEL. IRIDITE			
FINISH & SPEC. NO.			