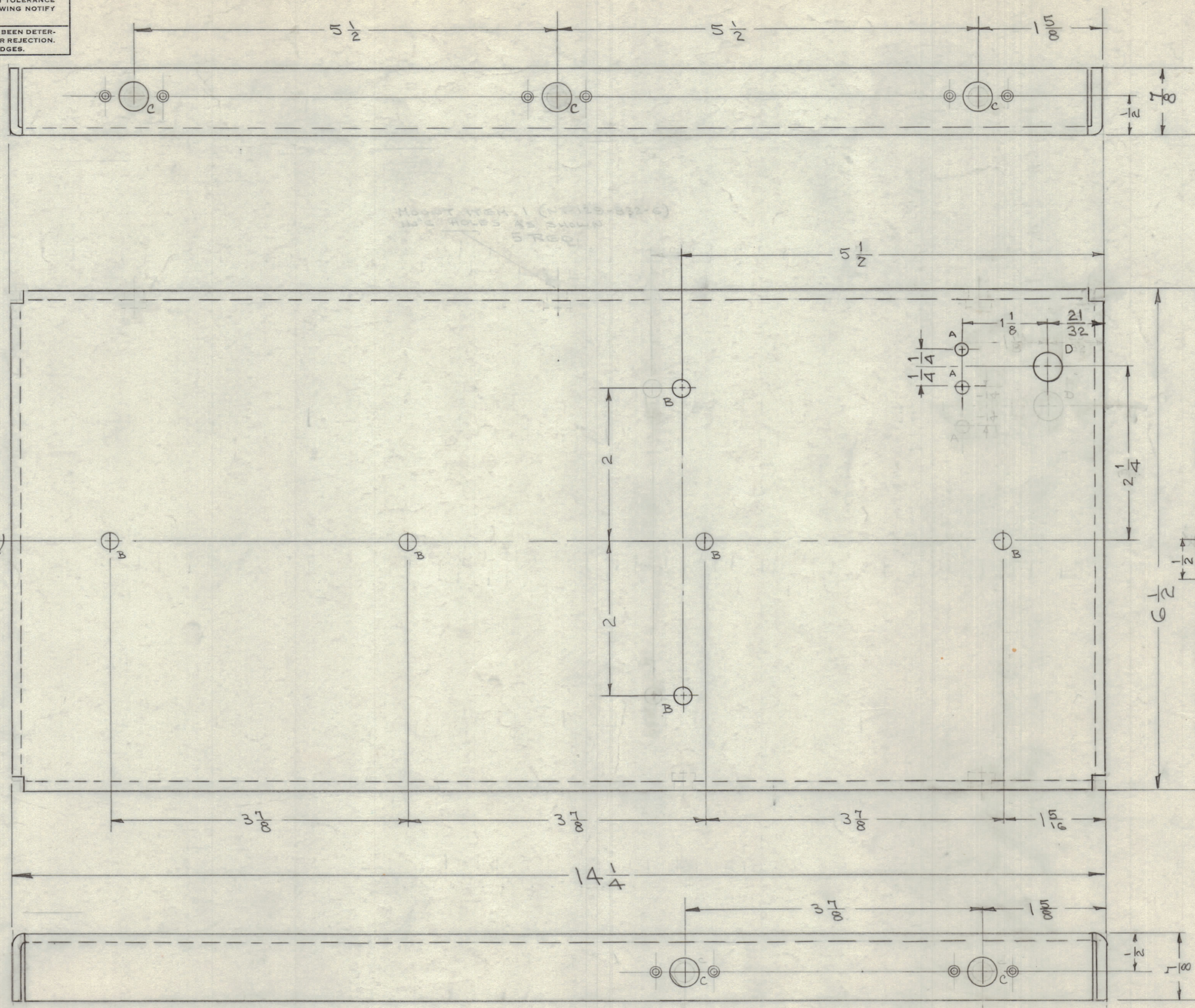


IF IT IS FOUND DESIRABLE TO CHANGE ANY TOLERANCE OR OTHER DETAIL SPECIFIED ON THIS DRAWING NOTIFY THE PURCHASER PROMPTLY.

MAXIMUM ALLOWABLE TOLERANCES HAVE BEEN DETERMINED AND DEVIATIONS WILL BE CAUSE FOR REJECTION. REMOVE ALL BURRS AND SHARP EDGES.

NOTICE TO PERSONS RECEIVING THIS DRAWING  
 THE TECHNICAL MATERIEL CORPORATION  
 MAMARONECK, NEW YORK  
 Property of:  
 THE TECHNICAL MATERIEL CORPORATION  
 This drawing is issued in confidence or engineering information only and may not be re-produced or used to manufacture anything shown hereon without permission from THE TECHNICAL MATERIEL CORPORATION to the user. This drawing is loaned for mutual assistance and is subject to recall at any time.



Mount 129's (1-12-60)  
 1/2" HOLES AS SHOWN  
 5 REQ.

MS-1937 A

UNLESS OTHERWISE SPECIFIED DIMENSIONS ARE IN INCHES AND INCLUDE CHEMICALLY APPLIED OR PLATED FINISHES

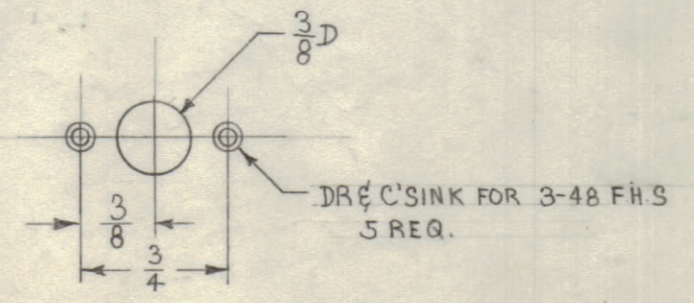
DECIMALS	FRACTIONS
.X ± .05	± 1/64
.XX ± .01	± 1/32
.XXX ± .005	± 0° 30'

TOLERANCES

CUT WARE GUARANTEED 2-48

HOLE LEGEND

- A - 1/64 (.171) D 2 REQ.
- B - 7/32 (.218) D 12 REQ.
- C - 3/8 (.375) D 1 REQ.



ISSUE	ITEM	CHANGED FROM	DATE	CH. NO.	DRAFTS	CHECKER	ENG. APP.
A	2	"C" DETAIL WAS .221	2-1-60	1825	2/18	HQ	16
	1	NT-129'S DELETED					

ALL OTHERS	DEC. DIM. ± FRAC. DIM. ± ANGULAR DIM. ±	DRILL, PUNCH, COMMERCIAL STOCK SIZES AND MANUFACTURERS TOLERANCES ARE NOT INCLUDED.
------------	---	---

1	AX-212	GPT-40K		1-12-60
REQ. PER UNIT	MODEL	PROJECT NO.	ASSY. NO.	DATE
				USED ON

REQ. ITEM	PART NO.	DESCRIPTION	SYMBOL
	1/8 THICK	THE TECHNICAL MATERIEL CORP. MAMARONECK, NEW YORK	
	ALUMINUM	SIDE PLATE, LEFT	
	5052-H32	CROWBAR DRAWER	
		DRAWN	ELEC. DES. APP. MECH. DES. APP.
		CHECKED	FINAL APPROVAL
			MS-1937 A