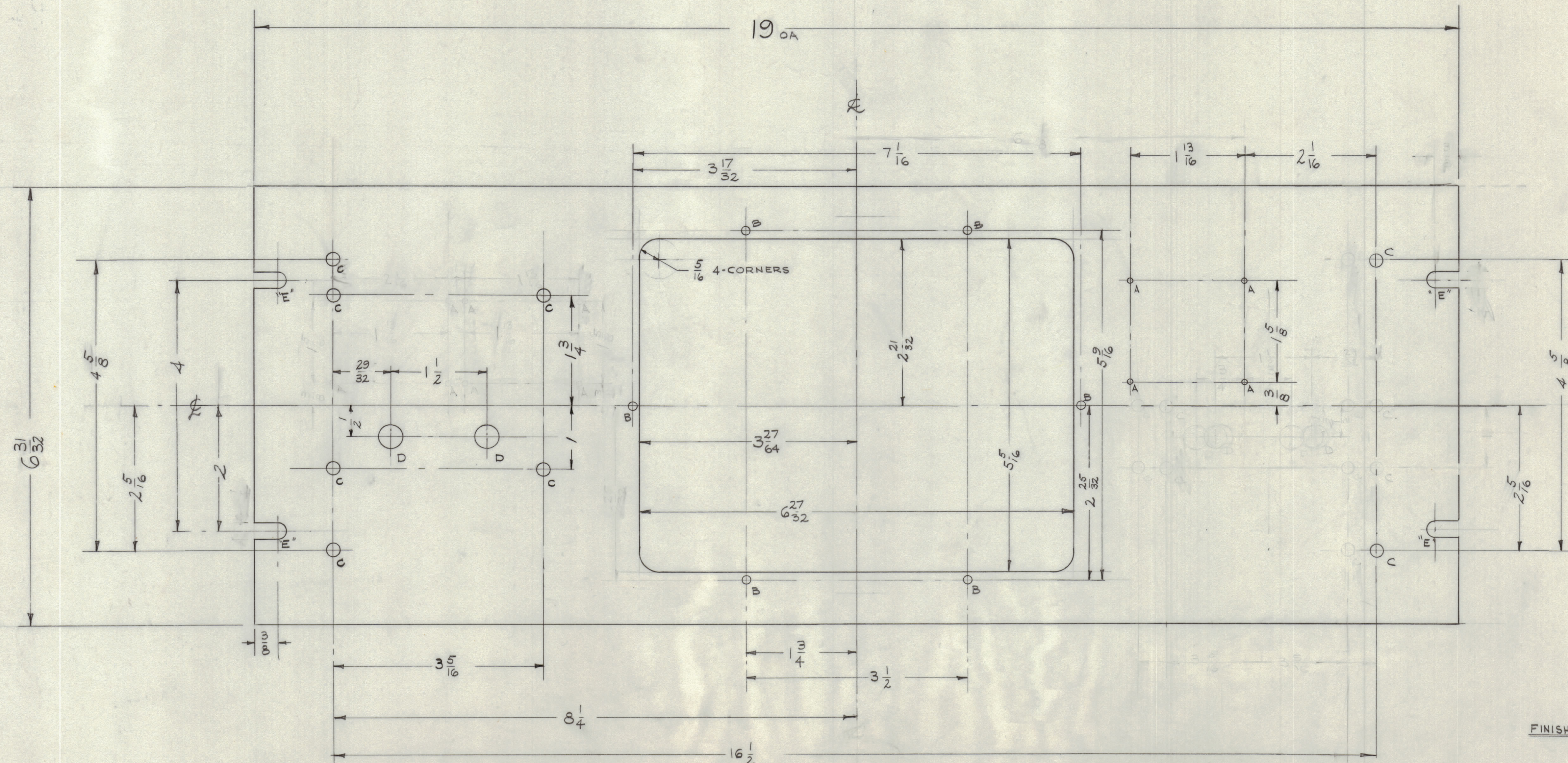


IF IT IS FOUND DESIRABLE TO CHANGE ANY TOLERANCE OR OTHER DETAIL SPECIFIED ON THIS DRAWING NOTIFY THE PURCHASER PROMPTLY.
 MAXIMUM ALLOWABLE TOLERANCES HAVE BEEN DETERMINED AND DEVIATIONS WILL BE CAUSE FOR REJECTION. REMOVE ALL BURRS AND SHARP EDGES

NOTICE TO PERSONS RECEIVING THIS DRAWING

THE TECHNICAL MATERIEL CORPORATION claims proprietary right in the material disclosed herein. This drawing is issued in confidence for engineering information only and may not be reproduced or used to manufacture anything shown herein without permission from THE TECHNICAL MATERIEL CORPORATION to the user. This drawing is loaned for mutual assistance and is subject to recall at any time.

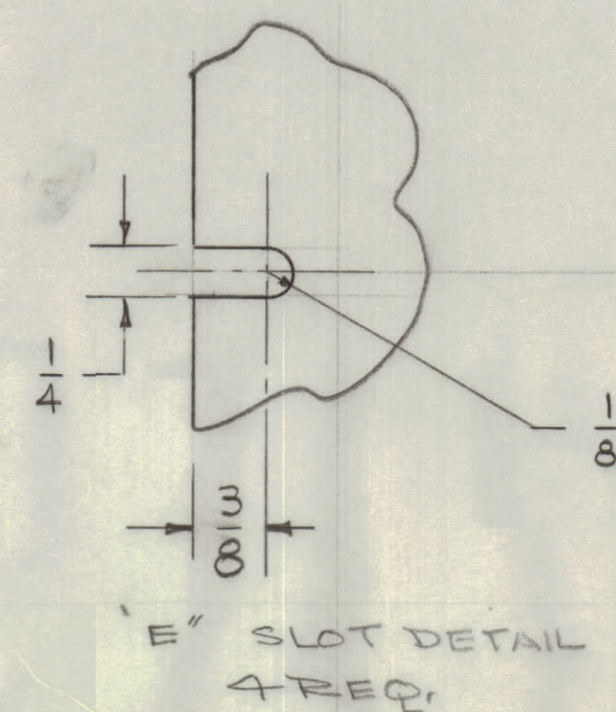
Property of:
 THE TECHNICAL MATERIEL CORPORATION
 MAMARONECK, NEW YORK



FINISH NOTE:

S 404 - YELLOW IRIDITE
 S 114 - ZINC CHROMATE PRIMER } FRONT &
 S 115 - SMOOTH GREY ENAMEL } EDGES ONLY
 (OR PRIME & PAINT TO CUST. SPEC.)

HOLES	REQ'D
A - NO. 47 DR. (.078) DIA.	8
B - 1/8 (.125) DIA.	6
C - 13/64 (.203) DIA.	8
D - 3/8 (.375) DIA.	2
E - SEE SLOT DETAIL	4



REF: LD-657

REQ. ITEM	PART NO.	DESCRIPTION	SYMBOL
3/16		THE TECHNICAL MATERIEL CORP. MAMARONECK, NEW YORK	
ALUMINUM		FRONT, PANEL	
2024-T3		MACHINING	
HEAT TREAT. SPEC.			
SEE NOTE			
FINISH & SPEC. NO.			MS-1923 A

ISSUE	ITEM	CHANGED FROM	DATE	DN. NO.	DRAFTER	CHECKER	ENG. APP.
A	1	RELOCATED - 4\"/>					

REQ. PER UNIT	MODEL	PROJECT NO.	ASSY. NO.	DATE
1	SWR-1000RM			12-15-59