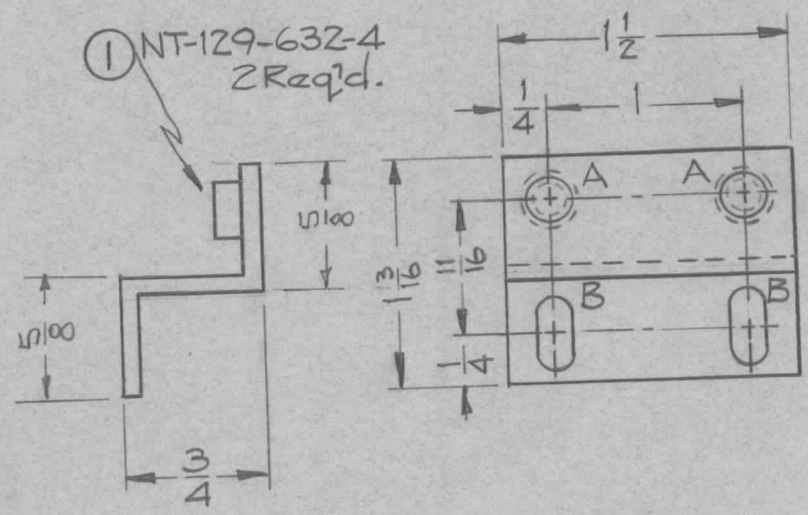


REQ. PER. UNIT	USED ON			MS-1916	B
	MODEL	ASS'Y. NO.	DATE		
1	AR-109		11-17-59		

HOLES — 221-334 DA
 A — .191-.194 Dia. to Mount NT-129-632-4 2
 B — 3/16 X 3/8 Slots 2



UNLESS OTHERWISE SPECIFIED
 DIMENSIONS ARE IN INCHES AND INCLUDE
 CHEMICALLY APPLIED OR PLATED FINISHES

DECIMALS	TOLERANCES	FRACTIONS
.X ± .05		± 1/64
.XX ± .01		ANGLES
.XXX ± .005		± 0° 30'

CUT HERE
 GUARANTEED
 2-66

							2	1	NT-129-632-4	NUT ROUND, SWAGE TYPE	Δ	
							REQ.	ITEM	PART NO.	DESCRIPTION	SYMBOL	
										THE TECHNICAL MATERIEL CORP.		
										MAMARONECK, NEW YORK		
										BRACKET, SWITCH		
B	1	⊕ Hole was .221-224	1-7-61	3941	RU	JCB	200					
A	1	STOCK SIZE .061 TO .081	5-17-60	2291	JCB	ave						
ISSUE	ITEM	CHANGED FROM	DATE	CH. NO.	DRAFTS	CHECKER	ENG. APP.					
TOLERANCES			SCALE:									
DEC. DIM. ±			MAXIMUM ALLOWABLE TOLERANCES HAVE BEEN DETERMINED AND ANY DEVIATIONS WILL BE CAUSE FOR REJECTION.									
FRAC. DIM. ±			REMOVE ALL BURRS AND SHARP EDGES									
ANGULAR DIM. ±												
							5052-H32			DRAWN	CHECKED	FINAL APPROVAL
							TYPE & TEMPER		HEAT TREAT. SPEC.			
							S-404 Yellow Iridite					
							FINISH & SPEC. NO.		ELEC. DES. APP	MECH. DES. APP	MS-1916 B	