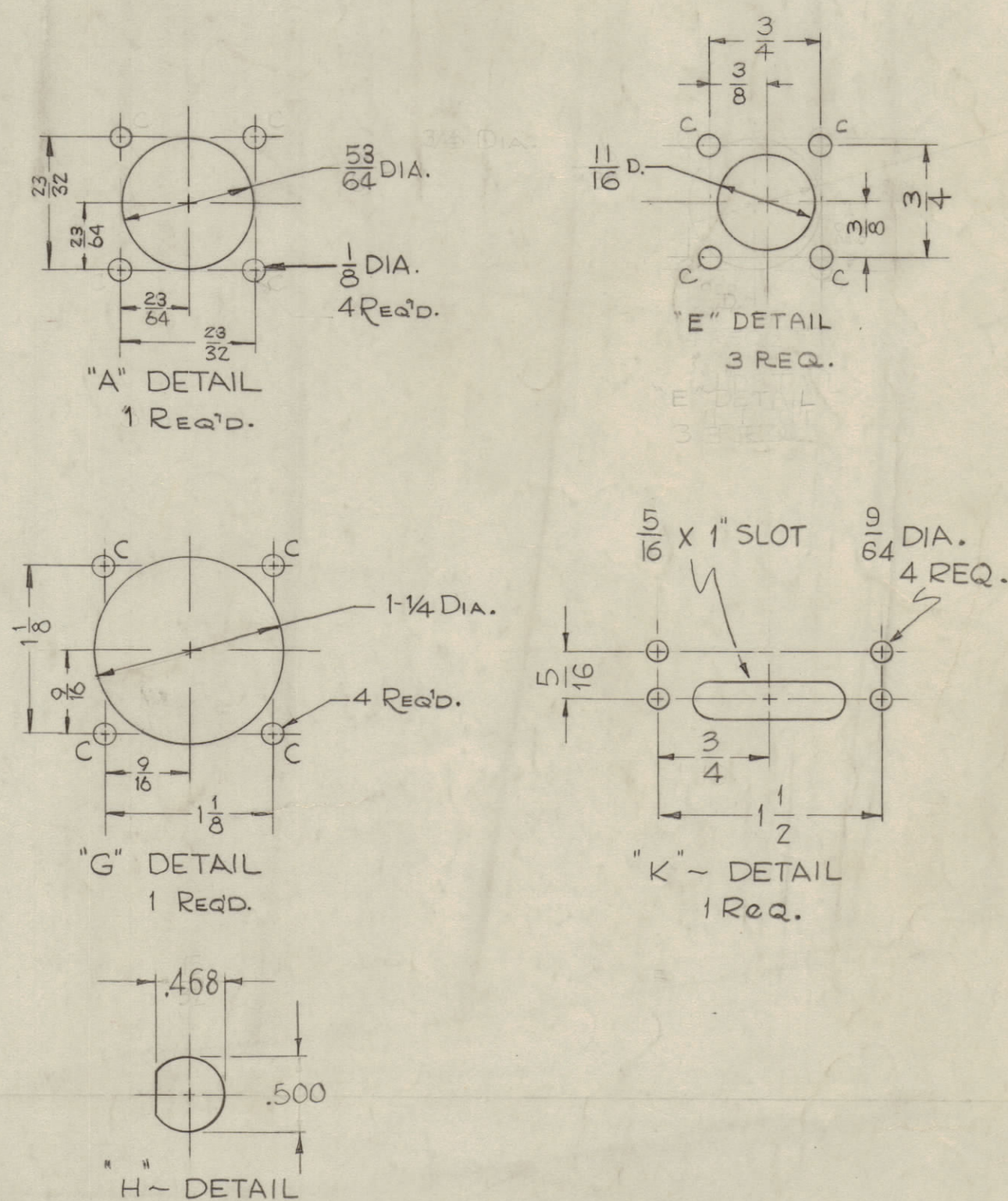


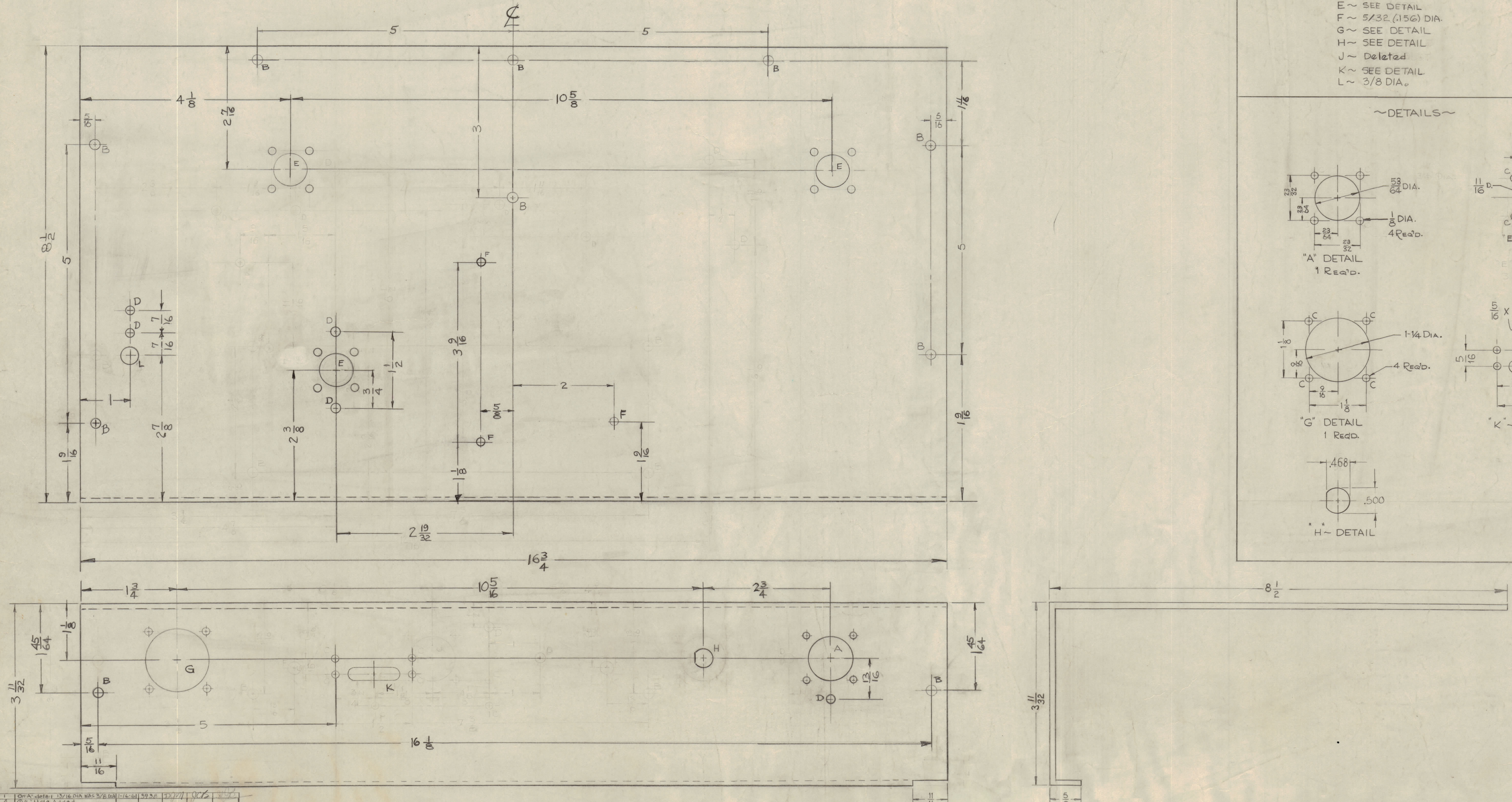
IF IT IS FOUND DESIRABLE TO CHANGE ANY TOLERANCE OR OTHER DETAIL SPECIFIED ON THIS DRAWING NOTIFY THE PURCHASER PROMPTLY.
 MAXIMUM ALLOWABLE TOLERANCES HAVE BEEN DETERMINED AND DEVIATIONS WILL BE CAUSE FOR REJECTION. REMOVE ALL BURRS AND SHARP EDGES

HOLES	REQ'D.
A ~ SEE DETAIL	1
B ~ 13/64 (.203) DIA.	10
C ~ 9/64 (.140) "	16
D ~ 3/16 (.187) "	5
E ~ SEE DETAIL	3
F ~ 5/32 (.156) DIA.	3
G ~ SEE DETAIL	1
H ~ SEE DETAIL	1
J ~ Deleted	
K ~ SEE DETAIL	1
L ~ 3/8 DIA.	1

~DETAILS~



MS-1907
H



NOTICE TO PERSONS RECEIVING THIS DRAWING
 THE TECHNICAL MATERIEL CORPORATION claims proprietary right in the material disclosed herein. This drawing is issued in confidence for engineering information only and may not be reproduced or used to manufacture anything shown hereon without permission from THE TECHNICAL MATERIEL CORPORATION to the user. This drawing is loaned for mutual assistance and is subject to recall at any time.
 Property of:
 THE TECHNICAL MATERIEL CORPORATION
 MAMARONECK, NEW YORK

E	1	On A detail 13/16 DIA WAS 3/8 DIA	1-16-61	5938	12/17	OKS
D	4	0 L Hole Added				
	3	Correction 6 3/4 DIA to 7 1/8	1-19-60	3700	D.J.M.	OKS
	2	3 Holes Added				
	1	C/D Hole Relocated				
C	4	H Hole was 3/8 Dia.	9-19-60	2984	J.C.B.	OKS
	3	OK Detail Added				
	2	2 Holes Added				
	1	B Hole Added				
B	1	COMPLETE REDESIGNING	5-13-60	2451	Ca	OKS
A	3	2 19/32 ADDED	11/16/60	1779	JK	OKS
	2	4 7/8 DELETED				
	1	2 3/8 WAS 2 9/16				

ISSUE	ITEM	CHANGED FROM	DATE	CH. NO.	DRAFTS	CHECKER	ENG. APP.
	H						
	G						
	F						

REQ. PER UNIT	MODEL	PROJECT NO.	ASSY. NO.	DATE
1	RAK-9	SBT-1K	A-1773	10-23-59

REQ. ITEM	PART NO.	DESCRIPTION	SYMBOL
	.081	THE TECHNICAL MATERIEL CORP. MAMARONECK, NEW YORK	
STOCK SIZE			
ALUMINUM			
R.F. OUTPUT CHASSIS			
MATERIAL WEIGHT PER PC			
5052-H32			
TYPE & TEMPER			
DRAWN			
ELEC. DES. APP.			
MECH. DES. APP.			
HEAT TREAT. SPEC.			
S-404 YELLOW IRIDITE			
FINISH & SPEC. NO.			
CHECKED			FINAL APPROVAL
			MS-1907 H