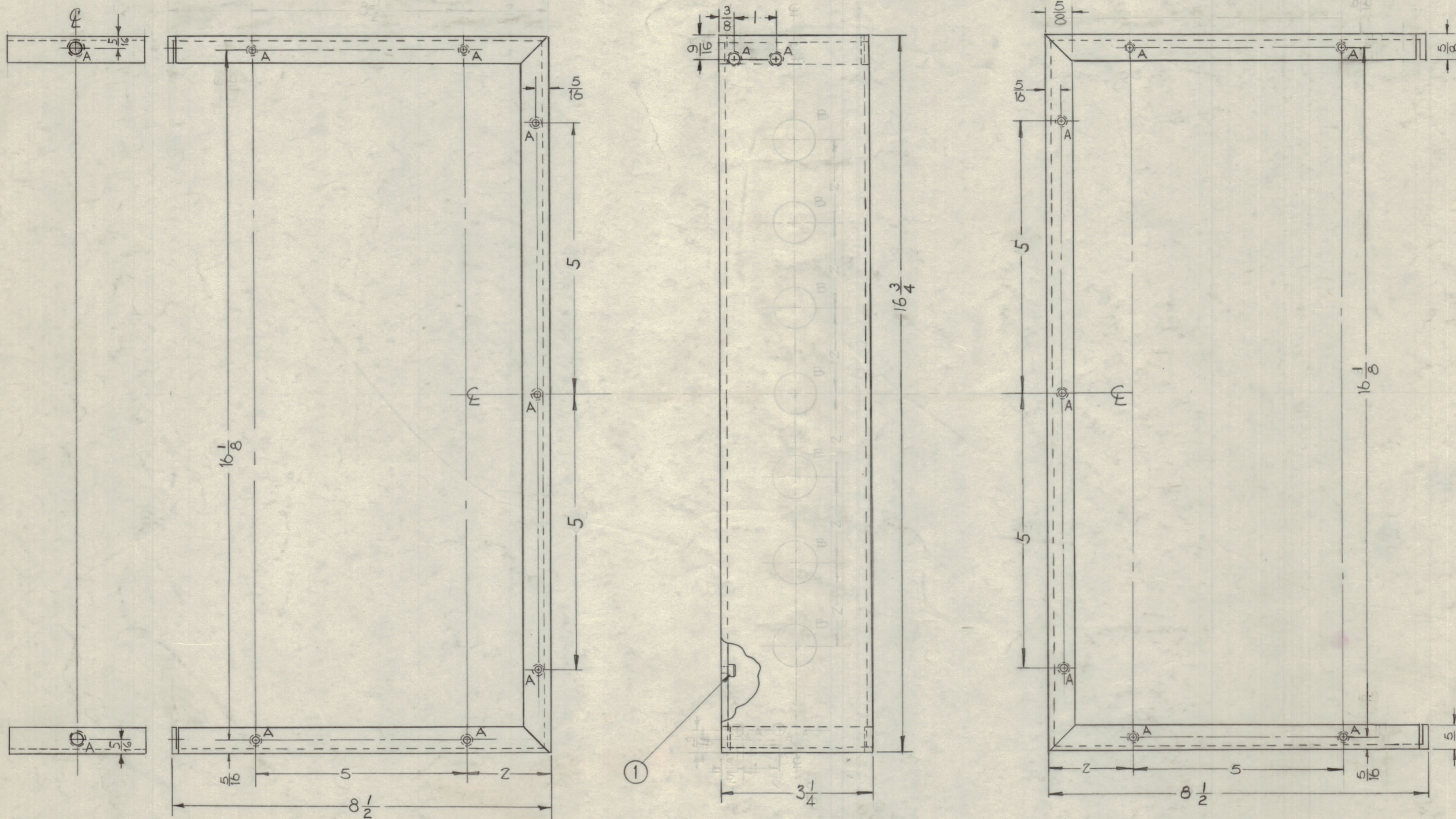


IF IT IS FOUND DESIRABLE TO CHANGE ANY TOLERANCE OR OTHER DETAIL SPECIFIED ON THIS DRAWING NOTIFY THE PURCHASER PROMPTLY.

MAXIMUM ALLOWABLE TOLERANCES HAVE BEEN DETERMINED AND DEVIATIONS WILL BE CAUSE FOR REJECTION. REMOVE ALL BURRS AND SHARP EDGES.

HOLES
A ~ .221-.224 Dia. For NT-129-832-4
B ~ 1 Inch Dia.

REQ'D.
16



MS-1906 E

NOTE: MOUNT ITEM 1 AS SHOWN.
IN ALL 'A' HOLES

NOTICE TO PERSONS RECEIVING THIS DRAWING

THE TECHNICAL MATERIEL CORPORATION claims proprietary right in the material disclosed hereon. This drawing is issued in confidence for engineering information only and may not be reproduced or used to manufacture anything shown hereon without permission from THE TECHNICAL MATERIEL CORPORATION to the user. This drawing is loaned for mutual assistance and is subject to recall at any time.

Property of:

THE TECHNICAL MATERIEL CORPORATION
MAMARONECK, NEW YORK

UNLESS OTHERWISE SPECIFIED
DIMENSIONS ARE IN INCHES AND INCLUDE
CHEMICALLY APPLIED OR PLATED FINISHES

TOLERANCES

DECIMALS
.X ± .05
.XX ± .01
.XXX ± .005

FRACTIONS
± 1/64
ANGLES
± 0° 30'

CUT HERE
GUARANTEED
2-58

E	1	16VB WAS 16 3/8	12/16/61	1538	AKV		
D	1	IN ALL 'A' HOLES ADDED TO NOTE B	7/048	63.			
C	1	(2) 'A' HOLES RELOCATED	11-30-61	4027	RU		
B	1	(2) 'A' HOLES ADDED	11-11-61	3885	W.A.F.		
A	1	(7) 'B' HOLES (1" DIA.) DELETED	3/23/7		J.C.B.		
ISSUE	ITEM	CHANGED FROM	DATE	CH. NO.	DRAFTS	CHECKER	ENG. APP.
TOLERANCES		SCALE:					
ALL OTHERS	DEC. DIM. ± FRAC. DIM. ± ANGULAR DIM. ±	DRILL, PUNCH, COMMERCIAL STOCK SIZES AND MANUFACTURERS TOLERANCES ARE NOT INCLUDED.					

1	RAK-9	SBT-1K	A-1773	10-21-59
REQ. PER UNIT	MODEL	PROJECT NO.	ASSY. NO.	DATE
	USED ON			

18	1	NT-129-832-4	NUT, ROUND, SWAGE TYPE	
REQ. ITEM	PART NO.	DESCRIPTION		SYMBOL
	.081	THE TECHNICAL MATERIEL CORP. MAMARONECK, NEW YORK		
STOCK SIZE		R.F. OUTPUT, CHASSIS		
MATERIAL		MOUNT		
WEIGHT PER PC.		D. MANCUSO		
5052-H32		DRAWN		
TYPE & TEMPER		ELEC. DES. APP.		
		MECH. DES. APP.		
HEAT TREAT. SPEC.		CHECKED		
S-404 YELLOW IRIDITE		FINAL APPROVAL		
FINISH & SPEC. NO.		MS-1906 E		