

TMC NO.	TABLE OF PANEL SIZE		
	DIMENSION X	DIMENSION Y	DIMENSION Z
MS-1800-1	1-23/32		1-1/4
MS-1800-2	3-15/32		3
MS-1800-3	5-7/32		2-1/4
MS-1800-4	6-31/32		4
MS-1800-5	8-23/32		5-3/4
MS-1800-6	10-15/32	3	2-1/4
MS-1800-7	12-7/32	2-1/4	3-1/2
MS-1800-8	13-31/32	3	4
MS-1800-9	15-23/32	4-3/4	4
MS-1800-10	17-15/32	6-1/2	4
MS-1800-11	19-7/32	5-3/4	5-1/4
MS-1800-12	20-31/32	7-1/2	5-1/4

NOTE 1 "H" INDICATES OBLONG HOLES  
"S" INDICATES NOTCHED PANELS

NOTE 2 WHEN PANELS ARE REQUIRED FINISHED OTHER THAN S115, ADD SPECIFICATION NUMBER APPLICABLE TO PART NUMBER AS PER EXAMPLE SHOWN. PANELS TO BE FINISHED FRONT AND EDGES ONLY. WHEN PANELS ARE TO BE FINISHED TMC GRAY, S115, OMIT SUFFIX ON PART NUMBER. WHEN PANELS ARE TO BE UN-PAINTED, ADD SUFFIX "UP".

UNLESS OTHERWISE SPECIFIED DIMENSIONS ARE IN INCHES AND INCLUDE CHEMICALLY APPLIED OR PLATED FINISHES		
DECIMALS	TOLERANCES	FRACTIONS
.X ± .05		± 1/64
.XX ± .01		ANGLES
.XXX ± .005		± 0° 30'

CUT HERE GUARANTEED 2-66

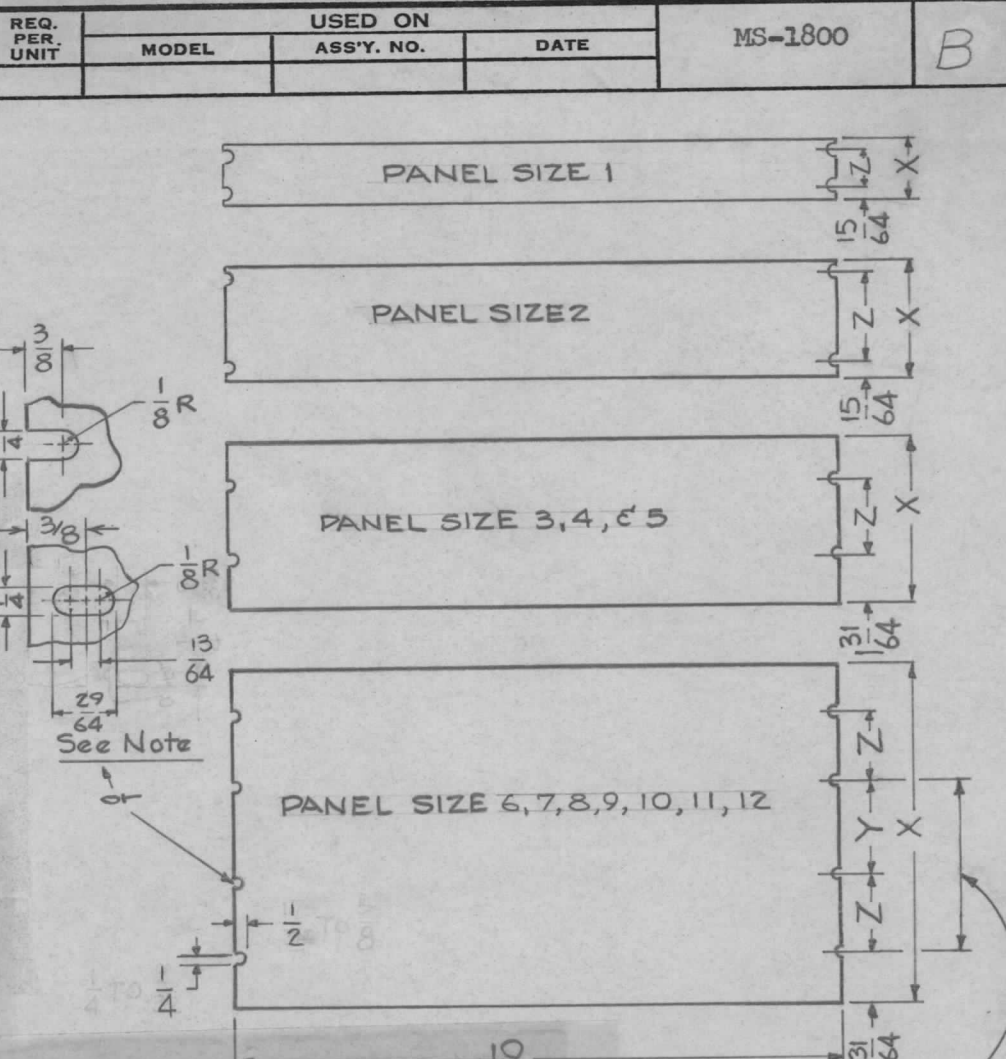
EXAMPLE PART NO.

MS 1800 - 2H - S520

TMC No.

Panel Size  
(See Note 1)

Paint Spec.  
(See Note 2)



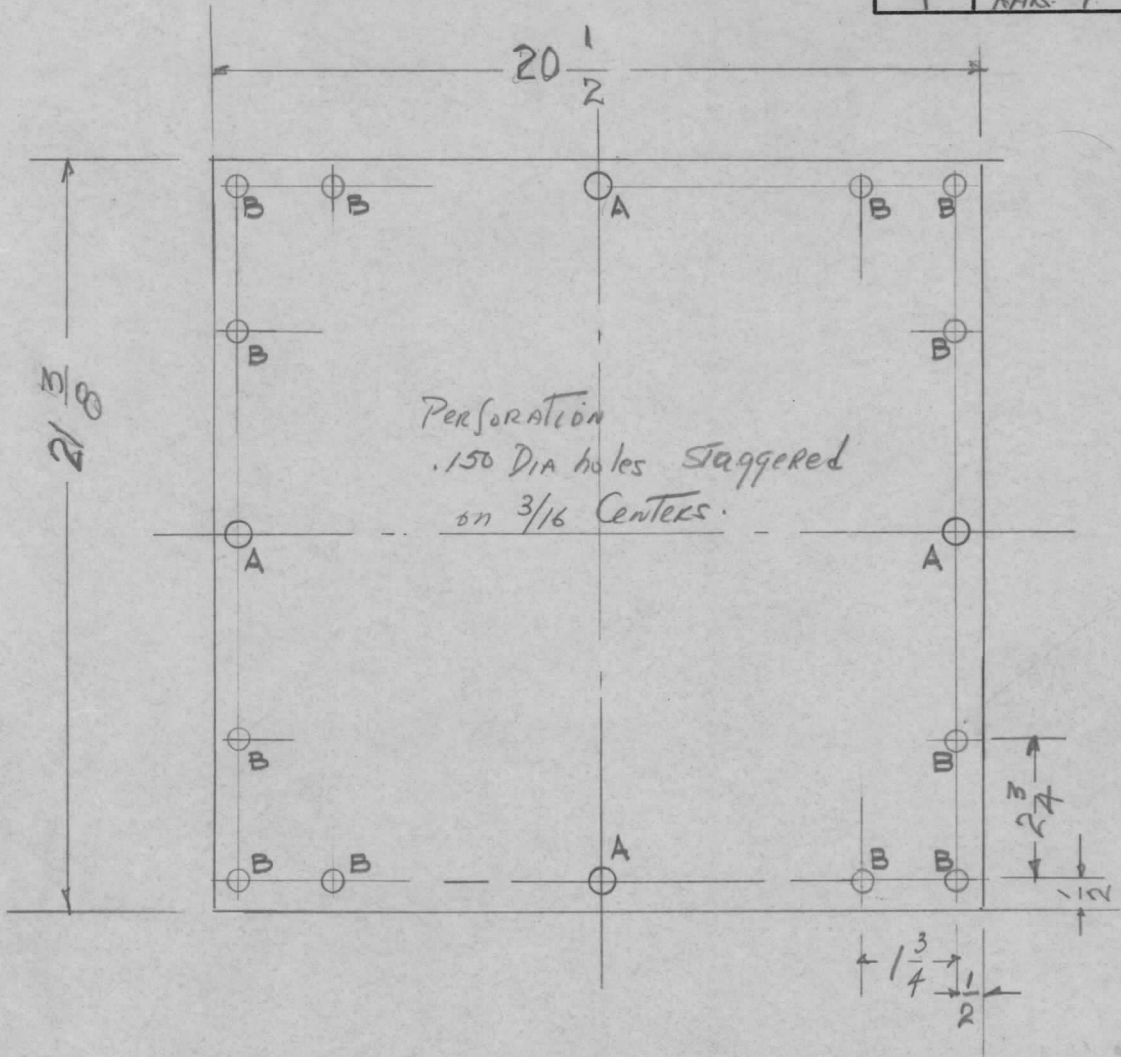
UNLESS OTHERWISE SPECIFIED DIMENSIONS ARE IN INCHES AND INCLUDE CHEMICALLY APPLIED OR PLATED FINISHES		
DECIMALS	TOLERANCES	FRACTIONS
.X ± .05		± 1/64
.XX ± .01		ANGLES
.XXX ± .005		± 0° 30'

CUT HERE GUARANTEED 2-66

Tolerance Between any Two Slots ± 1/64

REQ.	PER. UNIT	MODEL	ASS'Y. NO.	DATE	MS-1800	B			
B	-								
A	1								
ISSUE ITEM		CHANGED FROM		DATE	CH. NO.	DRAFTS	CHECKER	ENG. APP.	
TOLERANCES		SCALE:		MAXIMUM ALLOWABLE TOLERANCES HAVE BEEN DETERMINED AND ANY DEVIATIONS WILL BE CAUSE FOR REJECTION. REMOVE ALL BURRS AND SHARP EDGES					
DEC. DIM. ±		FRAC. DIM. ±		ANGULAR DIM. ±		FINISH & SPEC. NO.		ELEC. DES. APP	MECH. DES. APP
1/8 Thick		STOCK SIZE		ALUMINUM				MATERIAL	
5052-H-32		TYPE & TEMPER		HEAT TREAT. SPEC.		DRAWN		CHECKED	
J.C. Biele		H.O.		A/B		MS-1800		B	
THE TECHNICAL MATERIEL CORP.		MAMARONECK, NEW YORK		STANDARD 19" PANEL				1/8 Thick Blank	

REQ. PER. UNIT	USED ON			MS-1804	B
	MODEL	ASS'Y. NO.	DATE		
1	RAK 7				



A - 1/4 (.25) DIAM. 4 REQ'D  
 B - 3/8 (.375) " 12 "

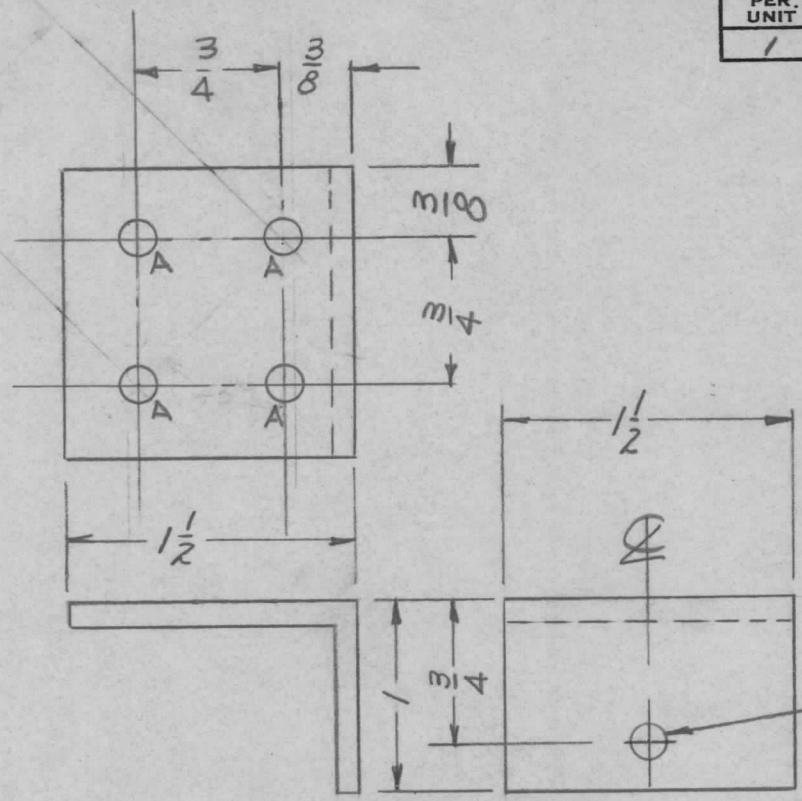
UNLESS OTHERWISE SPECIFIED DIMENSIONS ARE IN INCHES AND INCLUDE CHEMICALLY APPLIED OR PLATED FINISHES	
DECIMALS	FRACTIONS
.X ± .05	± 1/64
.XX ± .01	ANGLES
.XXX ± .005	± 0° 30'
<b>TOLERANCES</b>	

CUT HERE  
GUARANTEED  
2-66

NOTE:  
 PRIME & FINISH ALL SURFACES  
 S404 YELLOW IRIDITE  
 S520 BLU/GRY TEX VINYL

ISSUE	ITEM	CHANGED FROM	DATE	CH. NO.	DRAFTS	CHECKER	ENG. APP.	REQ. ITEM	PART NO.	DESCRIPTION	SYMBOL				
B		S114 DELETED S520 WAS S220	7-20-67	18421	WHD	[Signature]	[Signature]	.051		THE TECHNICAL MATERIEL CORP. MAMARONECK, NEW YORK MESH, Cover, Bottom	B				
A		REVISED	8-3-59		[Signature]	[Signature]	ALUMINUM								
							5052-H32								
TOLERANCES								SCALE:		DRAWN	CHECKED	FINAL APPROVAL			
DEC. DIM. ±			MAXIMUM ALLOWABLE TOLERANCES HAVE BEEN DETERMINED AND ANY DEVIATIONS WILL BE CAUSE FOR REJECTION. REMOVE ALL BURRS AND SHARP EDGES					TYPE & TEMPER		HEATTREAT. SPEC.		MS-1804	B		
FRAC. DIM. ±								SEE NOTE							
ANGULAR DIM. ±								FINISH & SPEC. NO.		ELEC. DES. APP				MECH. DES. APP	

REQ. PER. UNIT	USED ON			MS-1805	A
	MODEL	ASS'Y. NO.	DATE		
1	RAK-7				



HOLES  
A - DRILL & TAP FOR 8-32 4  
REQ'D. 4

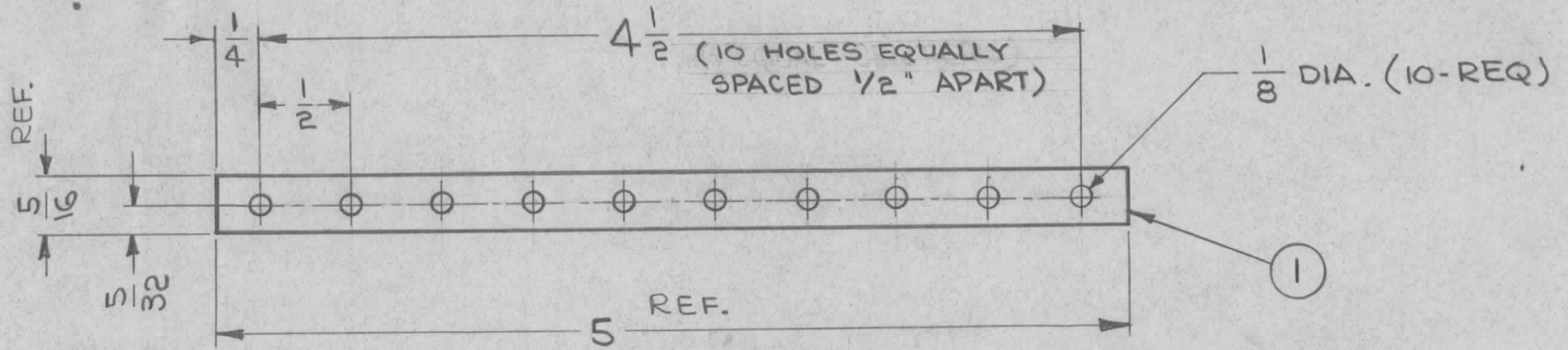
UNLESS OTHERWISE SPECIFIED  
DIMENSIONS ARE IN INCHES AND INCLUDE  
CHEMICALLY APPLIED OR PLATED FINISHES

DECIMALS	TOLERANCES	FRACTIONS
.X ± .05		± 1/64
.XX ± .01		ANGLES
.XXX ± .005		± 0° 30'

CUT HERE  
GUARANTEED  
2-66

REQ.	ITEM	PART NO.	DESCRIPTION	SYMBOL
		1/2 x 1 x 1/8 &	THE TECHNICAL MATERIEL CORP. MAMARONECK, NEW YORK BRACKET, HINGE SUPPORT	
		STOCK SIZE		
		STEEL		
		MATERIAL		
A	1	COMPLETE REVISION	AC	
ISSUE	ITEM	CHANGED FROM	DRAWN	CHECKED
		DATE		
		CH. NO.		
		DRAFTS		
		CHECKER		
		ENG. APP.		
TOLERANCES		SCALE:	FINAL APPROVAL	
DEC. DIM. ±		MAXIMUM ALLOWABLE TOLERANCES HAVE BEEN DETERMINED AND ANY DEVIATIONS WILL BE CAUSE FOR REJECTION. REMOVE ALL BURRS AND SHARP EDGES	MS-1805	
FRAC. DIM. ±			A	
ANGULAR DIM. ±				
		TYPE & TEMPER	HEAT TREAT. SPEC.	ELEC. DES. APP
		5404 1R10ITE		MECH. DES. APP
		5114 & 5220		
		FINISH & SPEC. NO.		

REQ. PER UNIT	USED ON			MS-1810 0
	MODEL	ASS'Y. NO.	DATE	
1	RTS-2		2-26-64	



UNLESS OTHERWISE SPECIFIED  
DIMENSIONS ARE IN INCHES AND INCLUDE  
CHEMICALLY APPLIED OR PLATED FINISHES

DECIMALS	FRACTIONS
.X ± .05	± 1/64
.XX ± .01	ANGLES
.XXX ± .005	± 0° 30'

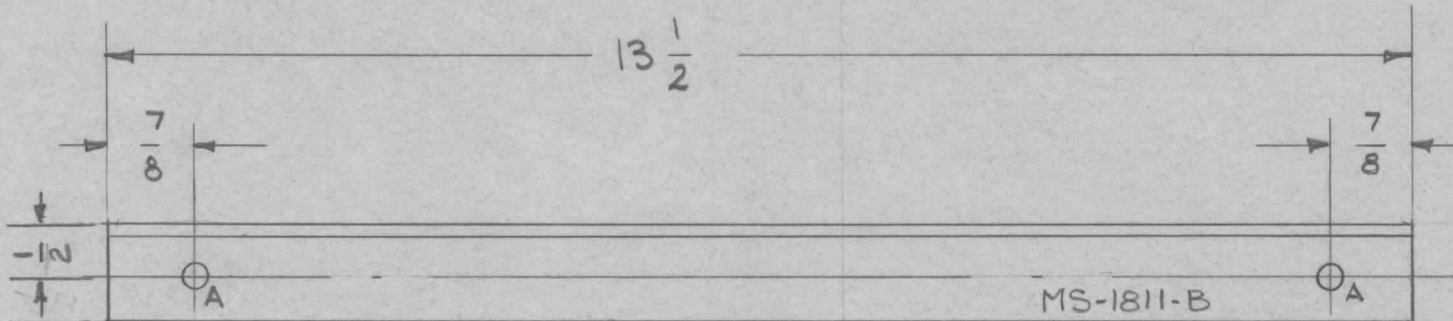
TOLERANCES

CUT HERE  
GUARANTEED  
2-66

1	1	MS-783-5-40-S	STRAP, CONNECTING		
REQ.	ITEM	PART NO.	DESCRIPTION		SYMBOL
		MS-783-5-40-S	THE TECHNICAL MATERIEL CORP. MAMARONECK, NEW YORK		
			STRAP, GROUND		
			MATERIAL		
			TYPE & TEMPER	HEAT TREAT. SPEC.	DRAWN
					CHECKED
					FINAL APPROVAL
			FINISH & SPEC. NO.	ELEC. DES. APP.	MECH. DES. APP.
					MS-1810 0

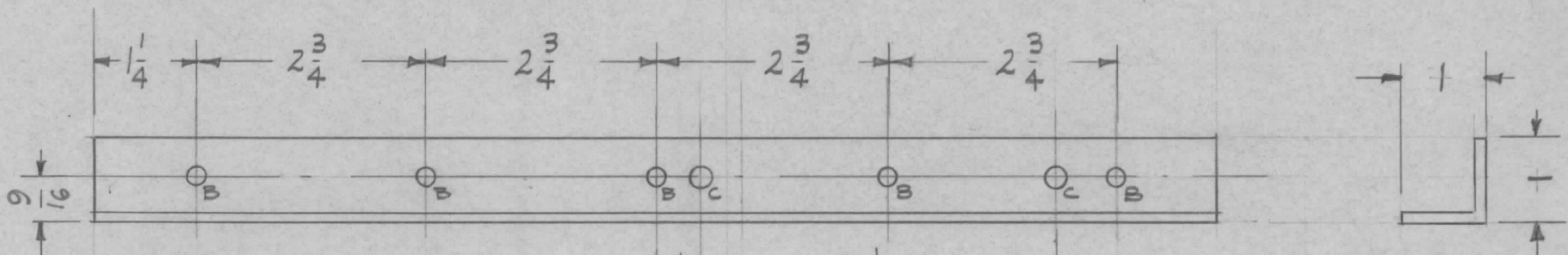
SYMBOL	DESCRIPTION	DATE	CH. NO.	DRAFTS	CHECKER	ENG. APP.
○	ORIGINAL RELEASE FOR PRODUCTION	3/3/64	1	ES		
UNLESS OTHERWISE SPECIFIED DIMENSIONS ARE IN INCHES AND INCLUDE CHEMICALLY APPLIED OR PLATED FINISHES		SCALE		1:1		
DECIMALS	FRACTIONS	CODE				
.X ± .05	± 1/64	A				
.XX ± .01	ANGLES					
.XXX ± .005	± 0° 30'					

REQ. PER. UNIT	USED ON			MS-1811 B
	MODEL	ASS'Y. NO.	DATE	
1	ATS-50(70)TU2		6-10-59	

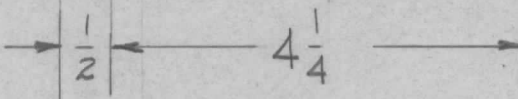


MS-1811-B

METAL STAMP TMC PART NO.  
1/8 HIGH, GOTHIC.

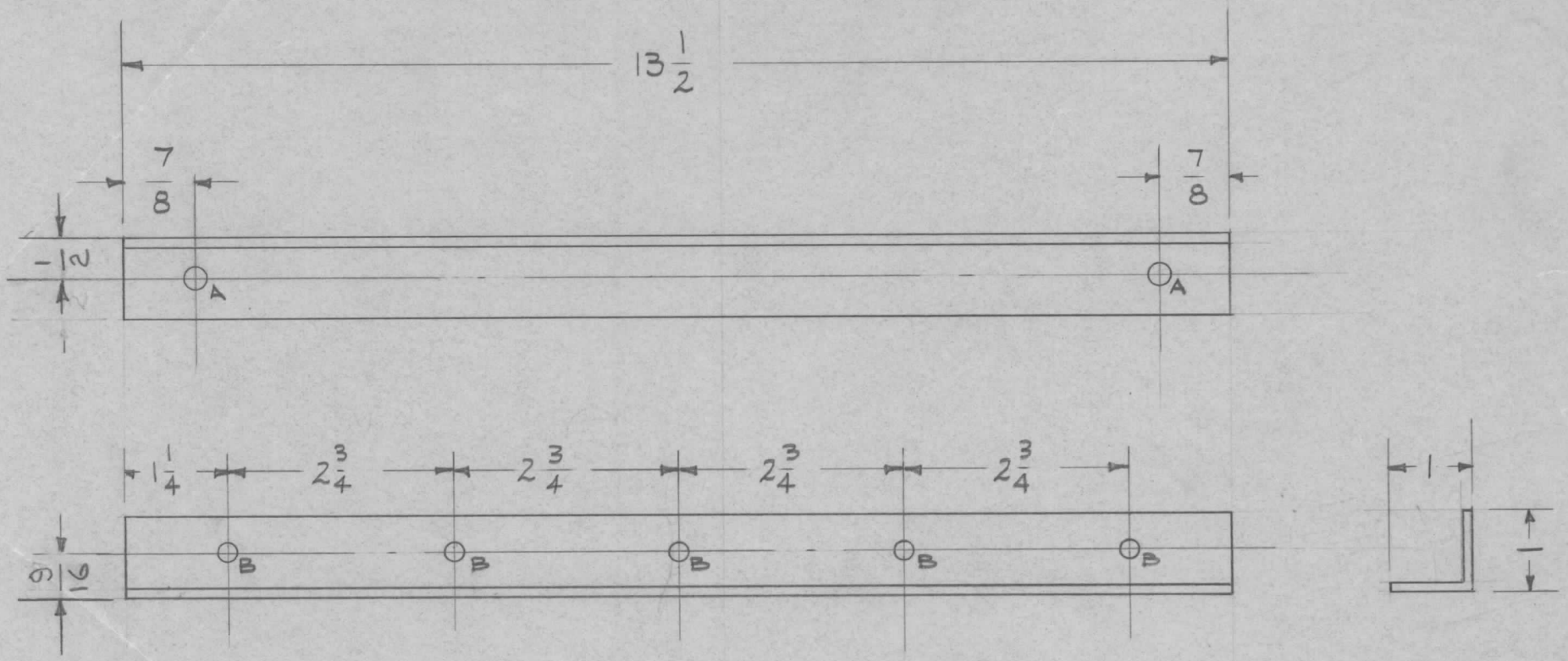


HOLES	REQ'D.
A - 5/16 (.312) D.	2
B - 13/64 (.203) D.	5
C - 1/4 (.250) D.	2



ISSUE	ITEM	CHANGED FROM	DATE	CH. NO.	DRAFTS	CHECKER	ENG. APP.	REQ. ITEM	PART NO.	DESCRIPTION	SYMBOL				
B	1	2 "C" HOLES WERE 15/64 DIA	10-8-62	7310	af.	Jde		1/8		THE TECHNICAL MATERIEL CORP.					
A	1	"A" HOLE WAS 1/4 D.	10/12/59	1408	16			ALUMINUM		MAMARONECK, NEW YORK					
								MATERIAL		BRACKET, REAR ANGLE					
								5052-H32		ATS-50(70)TU2					
TOLERANCES			SCALE: 1/2					TYPE & TEMPER		HEATTREAT. SPEC.	DRAWN	CHECKED	FINAL APPROVAL		
DEC. DIM. ±			MAXIMUM ALLOWABLE TOLERANCES HAVE BEEN DETERMINED AND ANY DEVIATIONS WILL BE CAUSE FOR REJECTION. REMOVE ALL BURRS AND SHARP EDGES					S404 - IRIDITE		DRAWN		FINAL APPROVAL			
FRAC. DIM. ±								FINISH & SPEC. NO.		ELEC. DES. APP		MECH. DES. APP		MS-1811 B	
ANGULAR DIM. ±								5404 - IRIDITE							

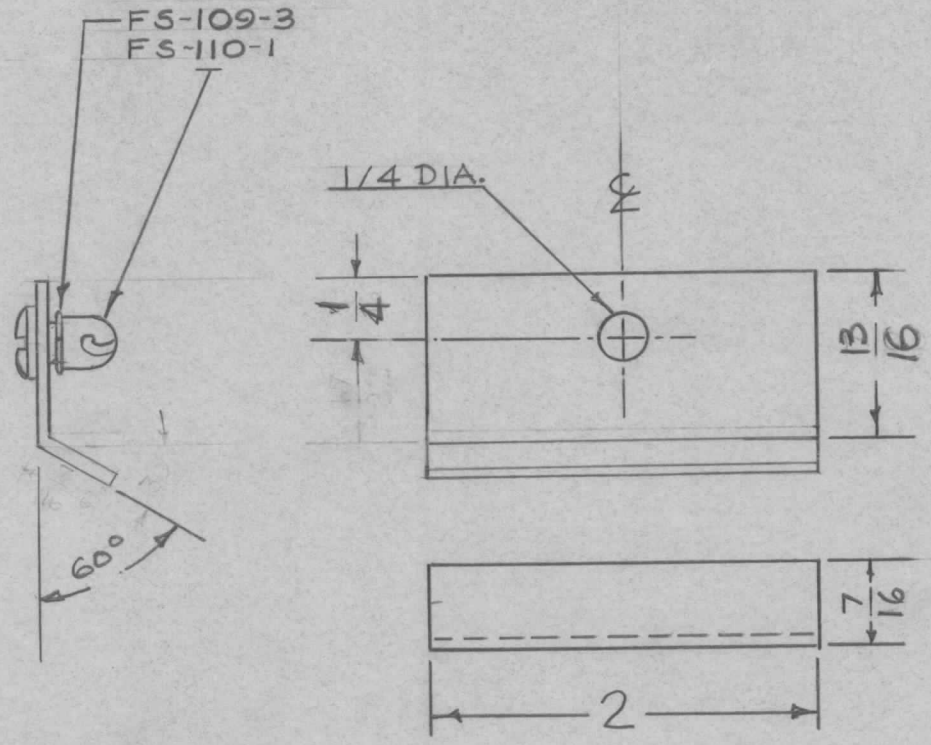
REQ. PER. UNIT	USED ON			MS-1812	A
	MODEL	ASS'Y. NO.	DATE		
2	ATS-50(70)Tb2		6-10-59		



A - 5/16 (.312) D.      2 REQ'D  
 B - 13/64 (.203) D.      5 "

ISSUE	ITEM	CHANGED FROM	DATE	CH. NO.	DRAFTS	CHECKER	ENG. APP.	REQ.	ITEM	PART NO.	DESCRIPTION	SYMBOL						
										1/8 THICK <del>7</del>	THE TECHNICAL MATERIEL CORP.							
										STOCK SIZE	MAMARONECK, NEW YORK							
										ALUMINUM	SUPPORT BRACKET							
										MATERIAL								
A	1	"A" Hole was 1/4 D. "B" was 13/16 (Error)	10/12/59	1408	K					5052-H32								
TOLERANCES			SCALE: 1/2				5052-H32		HEAT TREAT. SPEC.		DRAWN		CHECKED		FINAL APPROVAL			
DEC. DIM. ±			MAXIMUM ALLOWABLE TOLERANCES HAVE BEEN DETERMINED AND ANY DEVIATIONS WILL BE CAUSE FOR REJECTION. REMOVE ALL BURRS AND SHARP EDGES				TYPE & TEMPER		HEAT TREAT. SPEC.		DRAWN		CHECKED		FINAL APPROVAL			
FRAC. DIM. ± 1/64							S404-IRIDITE		Yellow		3/14		6-10-59		JAD		APB	
ANGULAR DIM. ±							FINISH & SPEC. NO.		ELEC. DES. APP		MECH. DES. APP		MS-1812		A			

REQ. PER. UNIT	USED ON			MS1827	B
	MODEL	ASS'Y. NO.	DATE		
1	RFD-1	PAL-1K	6-22-59		



UNLESS OTHERWISE SPECIFIED  
DIMENSIONS ARE IN INCHES AND INCLUDE  
CHEMICALLY APPLIED OR PLATED FINISHES

DECIMALS	TOLERANCES	FRACTIONS
.X ± .05		± 1/64
.XX ± .01		ANGLES
.XXX ± .005		± 0° 30'

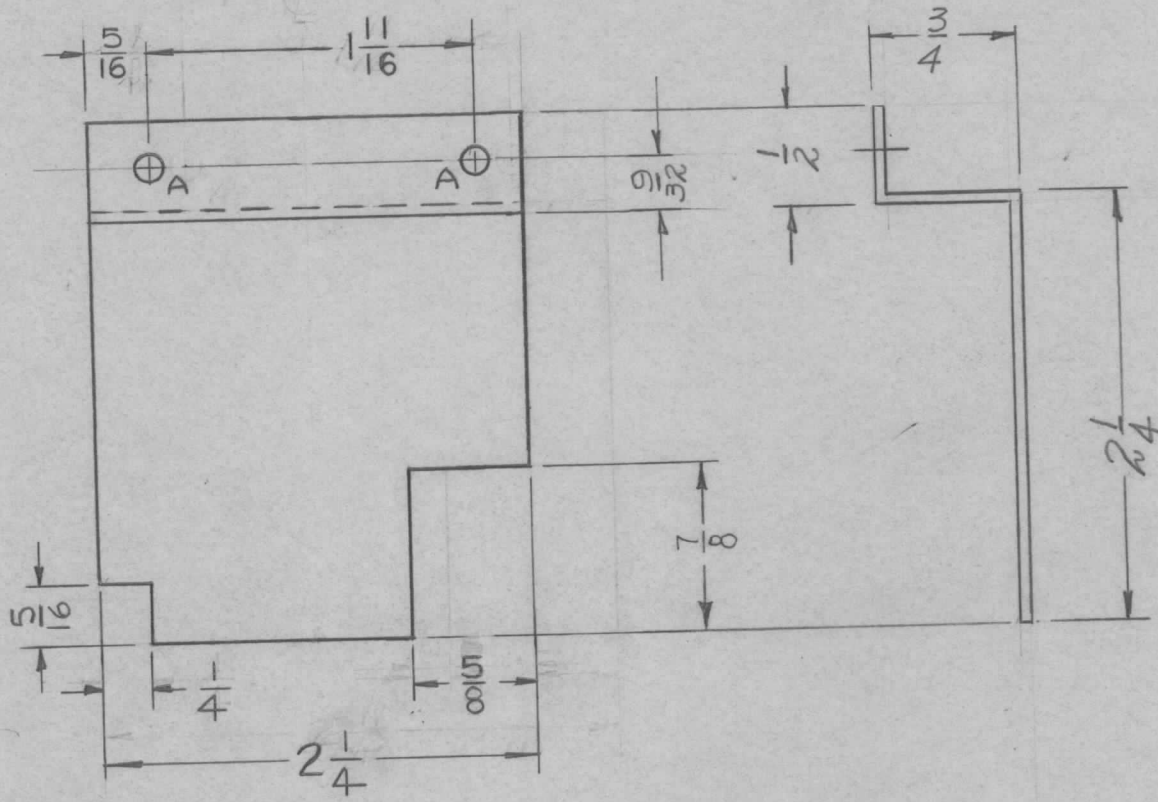
CUT HERE  
GUARANTEED  
2-56

ISSUE	ITEM	CHANGED FROM	DATE	CH. NO.	DRAFTS	CHECKER	ENG. APP.	REQ. ITEM	PART NO.	DESCRIPTION	SYMBOL			
									.064	THE TECHNICAL MATERIEL CORP. MAMARONECK, NEW YORK				
B	2	DIM 1/4 W 25 5/16	11/1/60	3353					STOCK SIZE					
	1	DIM 13/16 WAS 7/8							Aluminum	BRACKET, FILTER				
A	2	5/16 DIM. & 30° BEND ADDED	8/21/59	1215					MATERIAL					
	1	17/32 DIM. DELETED							5052-H32					
TOLERANCES			SCALE:					TYPE & TEMPER		HEAT TREAT. SPEC.	DRAWN	CHECKED	FINAL APPROVAL	
DEC. DIM. ±			MAXIMUM ALLOWABLE TOLERANCES HAVE BEEN DETERMINED AND ANY DEVIATIONS WILL BE CAUSE FOR REJECTION. REMOVE ALL BURRS AND SHARP EDGES					S404 IRIDITE					MS1827	B
FRAC. DIM. ±								FINISH & SPEC. NO.		ELEC. DES. APP	MECH. DES. APP			
ANGULAR DIM. ±														

REQ. PER. UNIT	USED ON		
	MODEL	ASS'Y. NO.	DATE
1	SBE-2		
1	SBE-3	A0-101	11-30-59

MS-1834 B

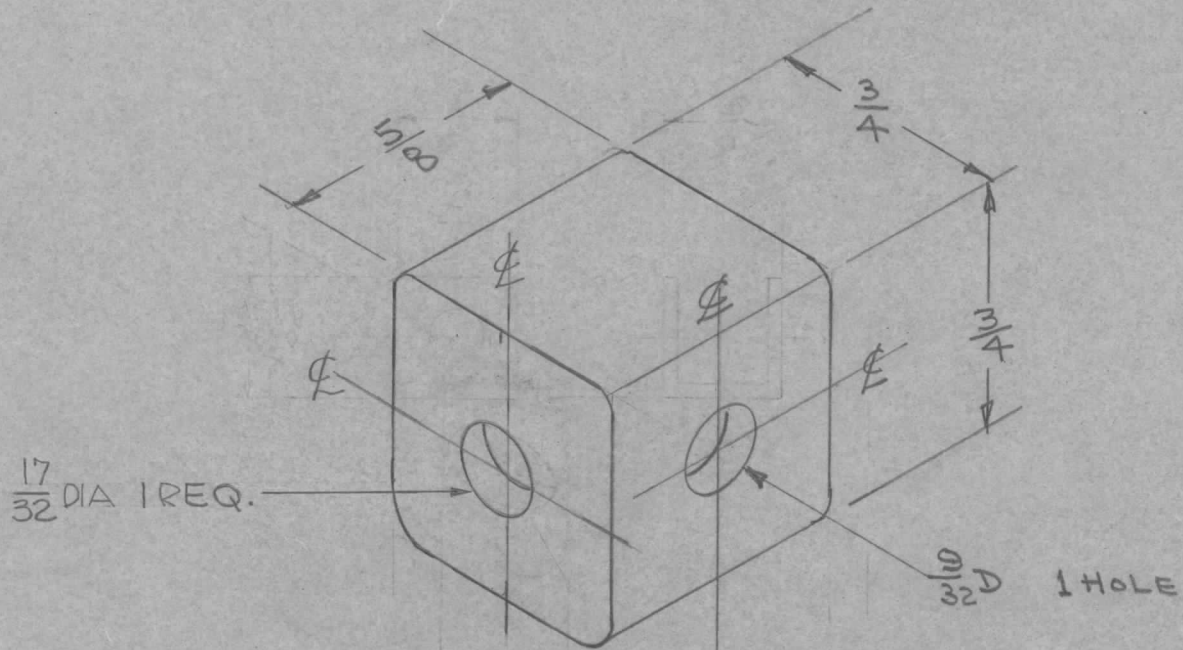
A- #25 DR. (.149) 2 REQ.



ISSUE		CHANGED FROM	DATE	CH. NO.	DRAFTS	CHECKER	ENG. APP.	REQ. ITEM	PART NO.	DESCRIPTION	SYMBOL					
B	3	1/4 x 5/16 NOTCH ADDED	9/14/60	2944C	cy	jro	jro	.051	5052-H32	THE TECHNICAL MATERIEL CORP. MAMARONECK, NEW YORK	SHIELD, R.F. OUTPUT CONTROL POTENTIOMETER					
	2	2 1/4 DIM. WAS 2 1/2														
	1	5/8 DIM. WAS 7/8 DIM.														
A	3	2 1/2 WAS 2 1/16	1-20-60	179A	9/14	jro	amb	ALUMINUM	5404-IRIDITE	DRAWN	CHECKED	FINAL APPROVAL				
	2	7/8 x 7/8 CUTOUT ADDED														
	1	"A" HOLES RELOCATED														
TOLERANCES			SCALE:			TYPE & TEMPER			HEAT TREAT. SPEC.			ELEC. DES. APP		MECH. DES. APP		
DEC. DIM. ±			MAXIMUM ALLOWABLE TOLERANCES HAVE BEEN DETERMINED AND ANY DEVIATIONS WILL BE CAUSE FOR REJECTION. REMOVE ALL BURRS AND SHARP EDGES			5404-IRIDITE			FINISH & SPEC. NO.			MS-1834		B		
FRAC. DIM. ± 1/64																
ANGULAR DIM. ±																

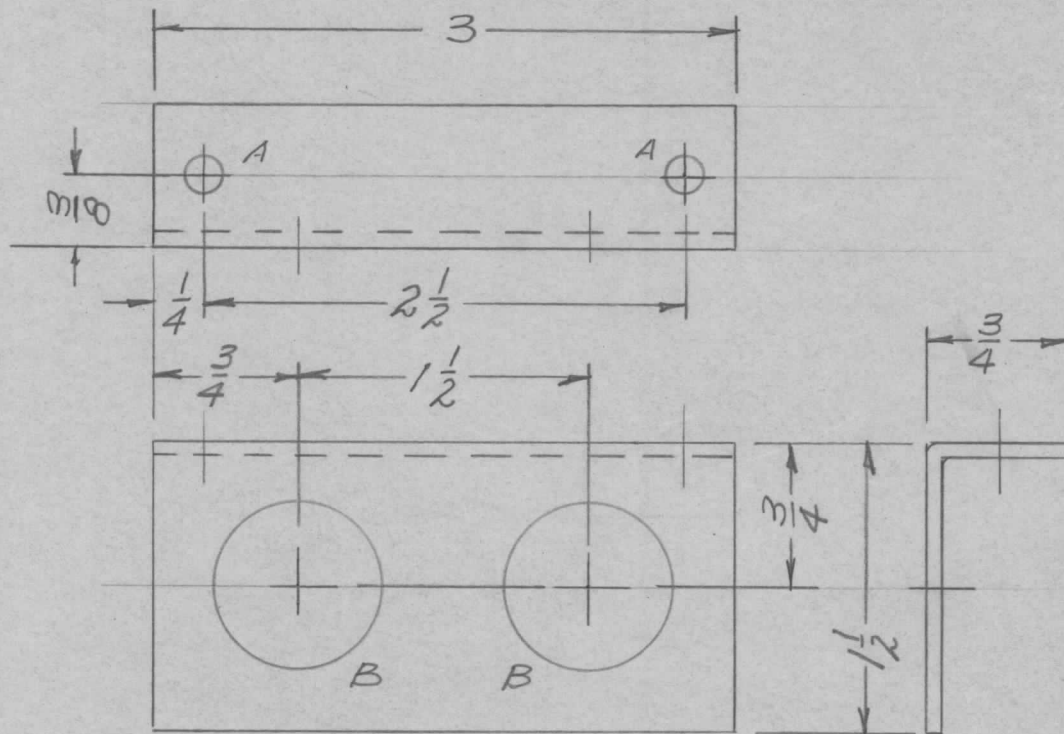


REQ. PER UNIT	USED ON			MS-1836	B
	MODEL	ASS'Y. NO.	DATE		
1	GPT-10K	A-1646	7/2/59		



REQ.	ITEM	PART NO.	DESCRIPTION				SYMBOL
		3/4 x 3/4 BAR	THE TECHNICAL MATERIEL CORP.				
		STOCK SIZE	MAMARONECK, NEW YORK				
B	1	17/32 DIA. WAS 19/32 X 15/32 SLOTTED HOLE	5-23-62	6723	EG	Handwritten initials	
A		COMPLETE REDESIGN	5/13/60	2953	Handwritten initials	Handwritten initials	
		HALF HARD BRASS	CENTER TERMINAL H.F. COIL				
		MATERIAL					
ISSUE	ITEM	CHANGED FROM	DATE	CH. NO.	DRAFTS	CHECKER	ENG. APP.
TOLERANCES			SCALE: <i>cro</i>				
DEC. DIM. ±			MAXIMUM ALLOWABLE TOLERANCES HAVE BEEN DETERMINED AND ANY DEVIATIONS WILL BE CAUSE FOR REJECTION. REMOVE ALL BURRS AND SHARP EDGES				
FRAC. DIM. ± 1/64							
ANGULAR DIM. ±							
TYPE & TEMPER		HEAT TREAT. SPEC.	DRAWN		CHECKED	FINAL APPROVAL	
NATURAL			Handwritten initials		Handwritten initials	MS-1836 B	
FINISH & SPEC. NO.		ELEC. DES. APP	MECH. DES. APP				

REQ. PER. UNIT	USED ON			MS-1838
	MODEL	ASS'Y. NO.	DATE	
1	GPT-10K	AUX. FR		



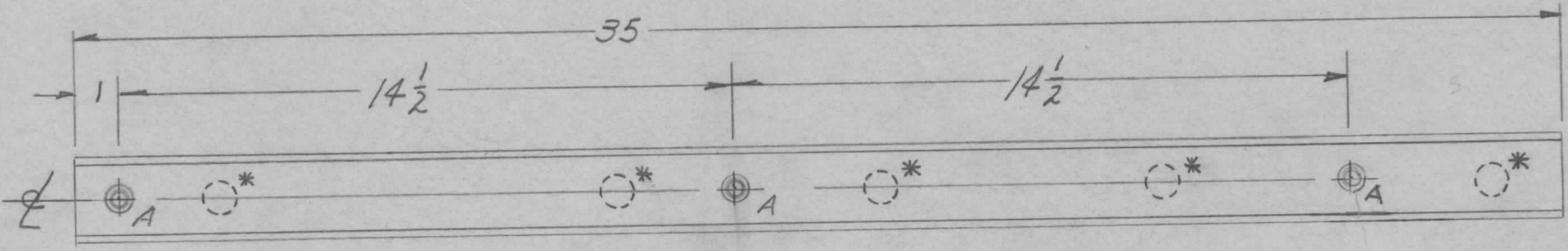
HOLE LEGEND  
 A -  $\frac{13}{64}$  (.203) DIA. 2 REQ.  
 B -  $\frac{7}{8}$  (.875) DIA. 2 REQ.

INSIDE RADIUS: METAL THICKNESS

ISSUE	ITEM	CHANGED FROM	DATE	CH. NO.	DRAFTS	CHECKER	ENG. APP.	REQ. ITEM	PART NO.	DESCRIPTION	SYMBOL				
								.081 THICK		THE TECHNICAL MATERIEL CORP.					
								STOCK SIZE		MAMARONECK, NEW YORK					
								ALUMINUM		BRACKET, CONNECTOR CABLE					
								MATERIAL							
								5052-H32		7/157	JND				
TOLERANCES			SCALE: <i>ctd</i>					TYPE & TEMPER		HEAT TREAT. SPEC.	DRAWN	CHECKED	FINAL APPROVAL		
DEC. DIM. $\pm$			MAXIMUM ALLOWABLE TOLERANCES HAVE BEEN DETERMINED AND ANY DEVIATIONS WILL BE CAUSE FOR REJECTION. REMOVE ALL BURRS AND SHARP EDGES					5404-1R10ITE							
FRAC. DIM. $\pm$ 1/64								FINISH & SPEC. NO.		ELEC. DES. APP	MECH. DES. APP				
ANGULAR DIM. $\pm$															
											MS-1838				

REQ. PER. UNIT	USED ON			MS-1840	B
	MODEL	ASS'Y. NO.	DATE		
1	GPT-10K	Aux. FR			

HOLES:  
A-.191-.194 DIA. (3REQ.)



MOUNT IN ALL 'A' HOLES

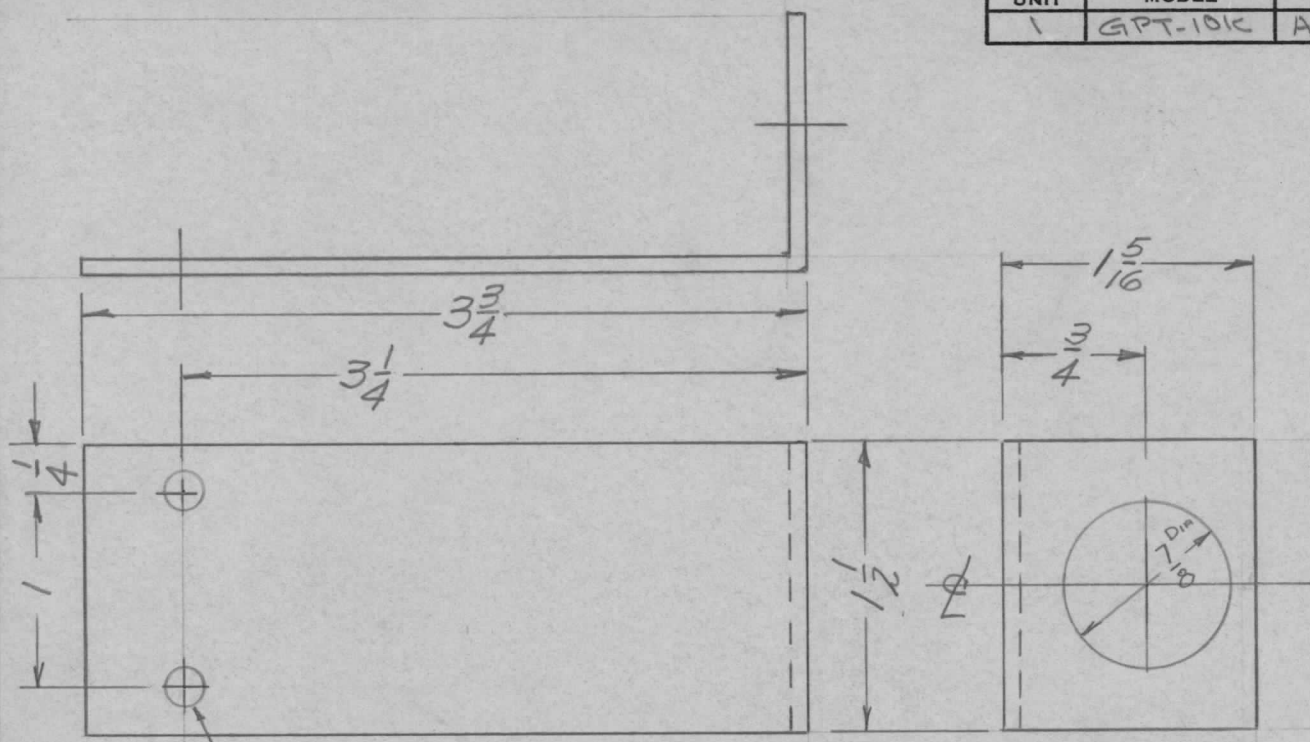
NOTE:  
PIECES MUST BE ORIENTED TO PREVENT NT129'S FROM BEING MOUNTED IN RANDOM KNOCKOUTS\*

REF: PO 160

				3	1	NT129-632-3	NUT, PLAIN, SPLINE			A		
				REQ.	ITEM	PART NO.	DESCRIPTION			SYMBOL		
				<i>ch</i>			THE TECHNICAL MATERIEL CORP.					
				STOCK SIZE			MAMARONECK, NEW YORK					
				<i>ch</i>			A.C. STRIP					
				MATERIAL								
				<i>ch</i>	<i>ch</i>	<i>coggia</i>	<i>file</i>	<i>du</i>				
TOLERANCES				SCALE: <i>ch</i>			TYPE & TEMPER	HEAT TREAT. SPEC.	DRAWN	CHECKED	FINAL APPROVAL	
DEC. DIM. ±				MAXIMUM ALLOWABLE TOLERANCES HAVE BEEN DETERMINED AND ANY DEVIATIONS WILL BE CAUSE FOR REJECTION. REMOVE ALL BURRS AND SHARP EDGES			<i>ch</i>				MS-1840	B
FRAC. DIM. ± <i>1/64</i>												
ANGULAR DIM. ±									FINISH & SPEC. NO.		ELEC. DES. APP	MECH. DES. APP

1840

REQ. PER. UNIT	USED ON			MS-1846
	MODEL	ASS'Y. NO.	DATE	
1	GPT-10K	AUX-FR,	7-2-55	



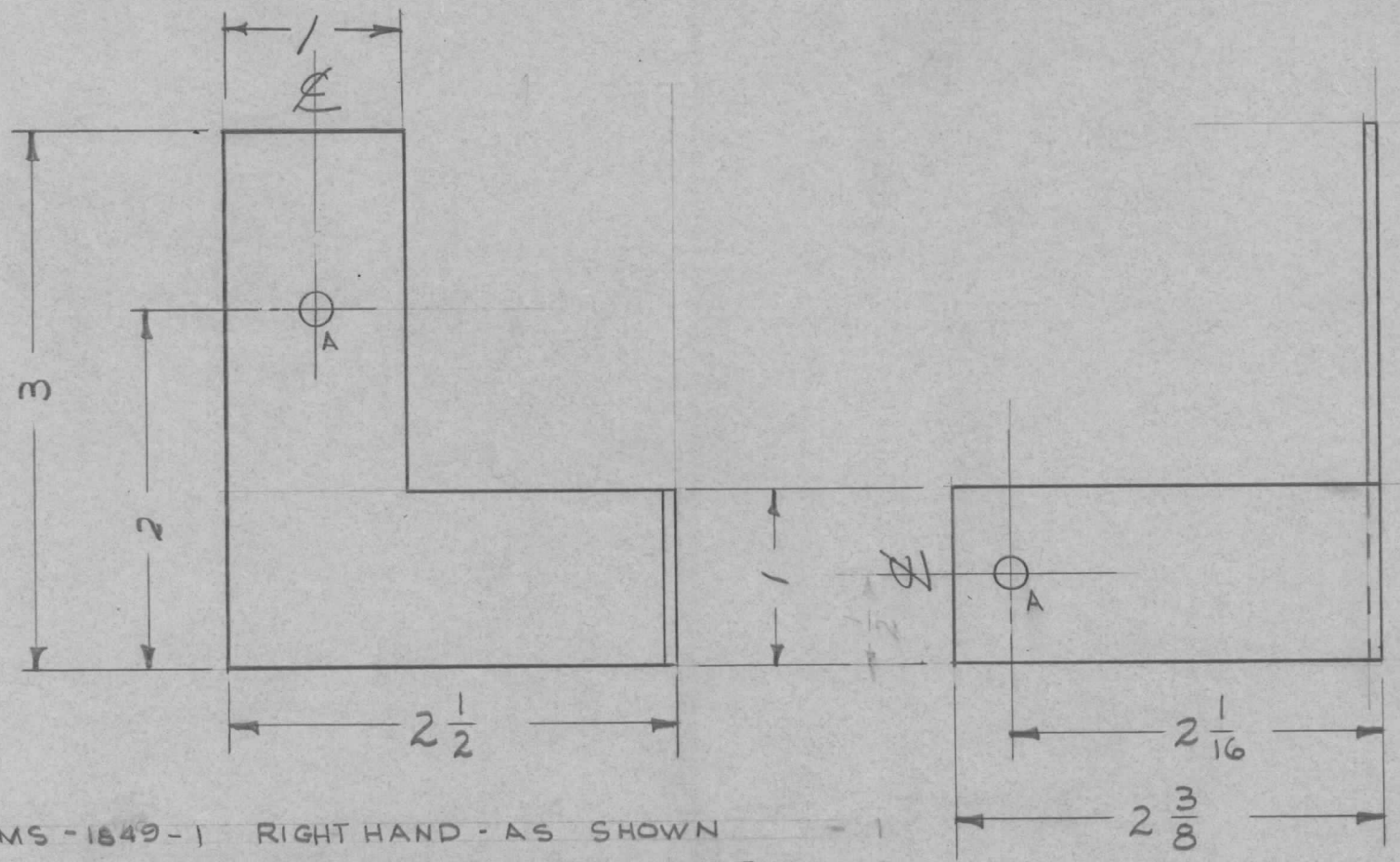
(2)  $\frac{13}{64}$  (.203) DIA. HOLE

INSIDE RADIUS METAL THICKNESS

REQ.	ITEM	PART NO.	DESCRIPTION			SYMBOL					
		.081 THICK	THE TECHNICAL MATERIEL CORP.								
		STOCK SIZE	MAMARONECK, NEW YORK								
		ALUMINUM	BRACKET CONNECTOR CABLE								
		MATERIAL									
ISSUE	ITEM	CHANGED FROM	DATE	CH. NO.	DRAFTS	CHECKER	ENG. APP.				
TOLERANCES			SCALE: <i>cto</i>				5052-H32	7/1/55	<i>[Signature]</i>	<i>[Signature]</i>	
DEC. DIM. ±			MAXIMUM ALLOWABLE TOLERANCES HAVE BEEN DETERMINED AND ANY DEVIATIONS WILL BE CAUSE FOR REJECTION:				TYPE & TEMPER	HEATTREAT. SPEC.	DRAWN	CHECKED	FINAL APPROVAL
FRAC. DIM. ± $\frac{1}{64}$			REMOVE ALL BURRS AND SHARP EDGES				5404-IRIDITE				
ANGULAR DIM. ±							FINISH & SPEC. NO.	ELEC. DES. APP	MECH. DES. APP		MS-1846

REQ. PER UNIT	USED ON			MS-1849
	MODEL	ASS'Y. NO.	DATE	
1	RAK 7		7-31-59	

A -  $\frac{11}{64}$  (.171) DIA. 2 REQ'D.



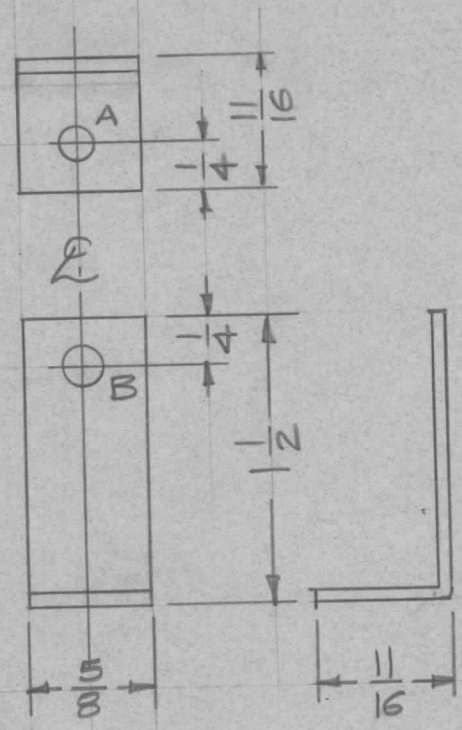
MS-1849-1 RIGHT HAND - AS SHOWN - 1  
 MS-1849-2 LEFT HAND - OPPOSITE BEND - 1

ISSUE	ITEM	CHANGED FROM	DATE	CH. NO.	DRAFTS	CHECKER	ENG. APP.	REQ.	ITEM	PART NO.	DESCRIPTION	SYMBOL
										.081	THE TECHNICAL MATERIEL CORP.	
										STOCK SIZE	MAMARONECK, NEW YORK	
										ALUMINUM	BRACKET, EQUIPMENT SUPPORT	
										MATERIAL		
										5052-H32	<i>TORIKO</i>	
										TYPE & TEMPER	CHECKED	FINAL APPROVAL
										HEAT TREAT. SPEC.		
										5404 - IRIDITE		MS-1849
										FINISH & SPEC. NO.	ELEC. DES. APP	MECH. DES. APP

TOLERANCES  
 DEC. DIM. ±  
 FRAC. DIM. ±  $\frac{1}{64}$   
 ANGULAR DIM. ±

SCALE: FULL  
 MAXIMUM ALLOWABLE TOLERANCES HAVE BEEN DETERMINED AND ANY DEVIATIONS WILL BE CAUSE FOR REJECTION. REMOVE ALL BURRS AND SHARP EDGES

REQ. PER UNIT 2	USED ON			MS-1861
	MODEL AT-100	ASS'Y. NO.	DATE	

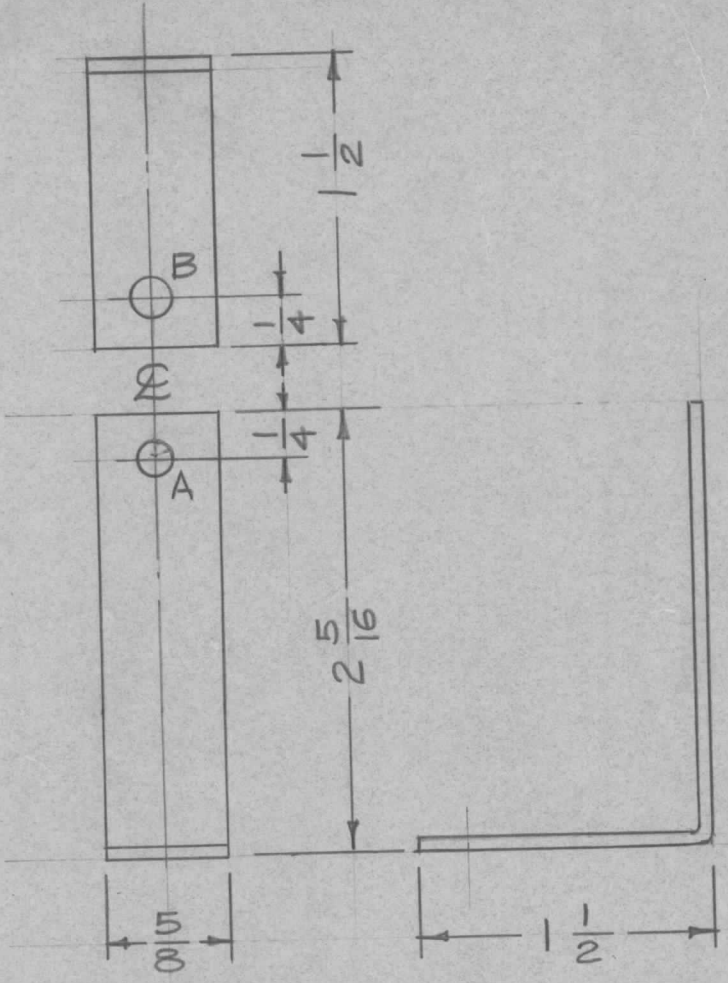


A -  $\frac{3}{16}$  (.187) D. 1 Req.  
 B -  $\frac{7}{32}$  (.218) D. 1 Req.

							REQ. ITEM	PART NO.	DESCRIPTION		SYMBOL	
							.064 THK.		THE TECHNICAL MATERIEL CORP.			
							STOCK SIZE		MAMARONECK, NEW YORK			
							Aluminum		BRACKET, COIL MOUNTING,			
							MATERIAL		TOP			
ISSUE	ITEM	CHANGED FROM	DATE	CH. NO.	DRAFTS	CHECKER	ENG. APP.	5052-H32	16 <sup>7</sup> / <sub>2</sub> /59	<i>fw</i>	<i>amp</i>	
TOLERANCES			SCALE: FULL		WAS 1-1430						FINAL APPROVAL	
DEC. DIM. ±			MAXIMUM ALLOWABLE TOLERANCES HAVE BEEN DETERMINED AND ANY DEVIATIONS WILL BE CAUSE FOR REJECTION. REMOVE ALL BURRS AND SHARP EDGES									
FRAC. DIM. ± 1/64												
ANGULAR DIM. ±												
							TYPE & TEMPER	HEAT TREAT. SPEC.	DRAWN	CHECKED		
							5404 Iridite				MS-1861	
							FINISH & SPEC. NO.	ELEC. DES. APP	MECH. DES. APP			

1-1430

REQ. PER. UNIT	USED ON			MS-1862
	MODEL	ASS'Y. NO.	DATE	
2	AT-100			

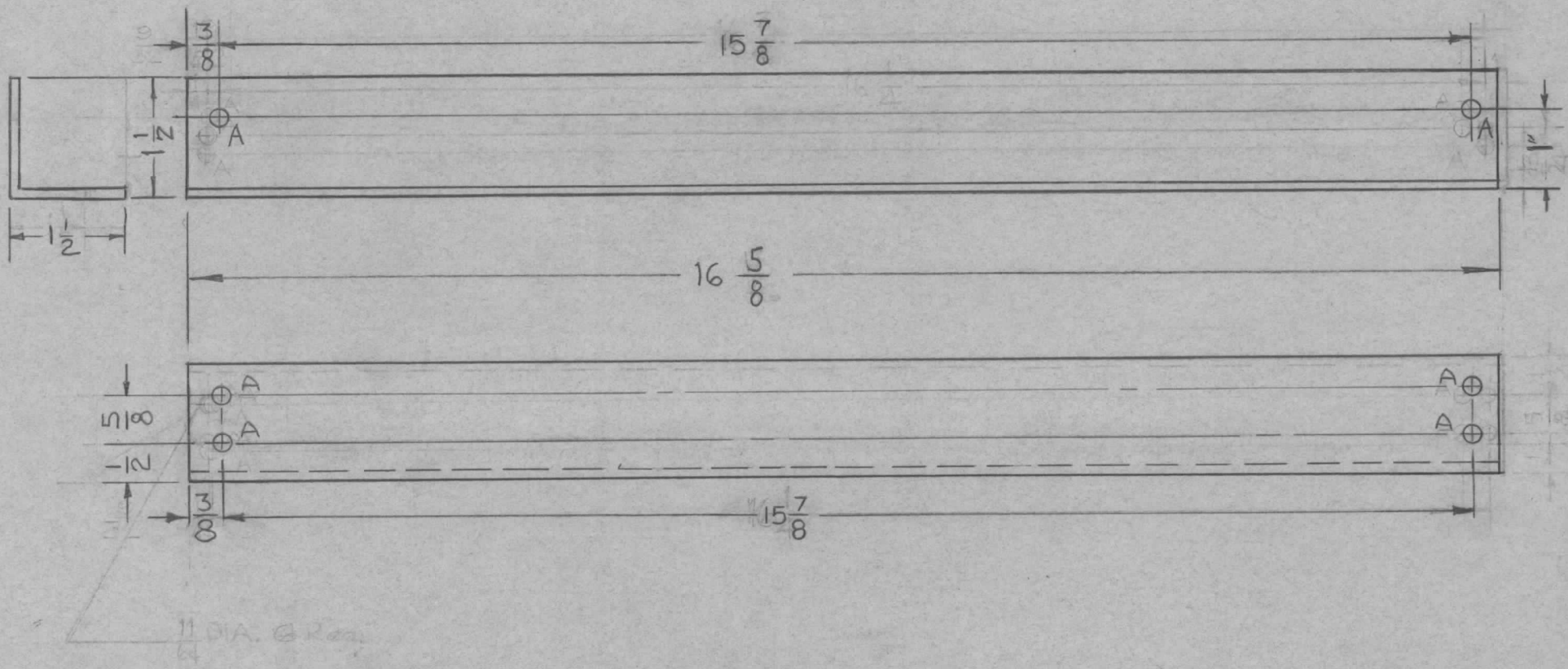


A -  $\frac{3}{16}$  (.187) D. 1 Req.  
 B -  $\frac{7}{32}$  (.218) D. 1 Req.

									REQ. ITEM	PART NO.	DESCRIPTION		SYMBOL
										.064 Thk	THE TECHNICAL MATERIEL CORP.		
										STOCK SIZE	MAMARONECK, NEW YORK		
										Aluminum	BRACKET, COIL MOUNTING,		
										MATERIAL	BOTTOM		
ISSUE	ITEM	CHANGED FROM	DATE	CH. NO.	DRAFTS	CHECKER	ENG. APP.		5052-H32		16 <sup>9</sup> / <sub>2</sub> /59	<i>[Signature]</i>	<i>[Signature]</i>
TOLERANCES			SCALE: FULL		WAS 1-1431						DRAWN	CHECKED	FINAL APPROVAL
DEC. DIM. ±			MAXIMUM ALLOWABLE TOLERANCES HAVE BEEN DETERMINED AND ANY DEVIATIONS WILL BE CAUSE FOR REJECTION. REMOVE ALL BURRS AND SHARP EDGES										
FRAC. DIM. ±													
ANGULAR DIM. ±													
									404 Iridite				MS-1862
									FINISH & SPEC. NO.		ELEC. DES. APP	MECH. DES. APP	

REQ. PER. UNIT	USED ON			MS-1863	C
	MODEL	ASS'Y. NO.	DATE		
1	CPP-2	10471	9-8-59		

A ~ 13/64 DIA. 6 REQ.

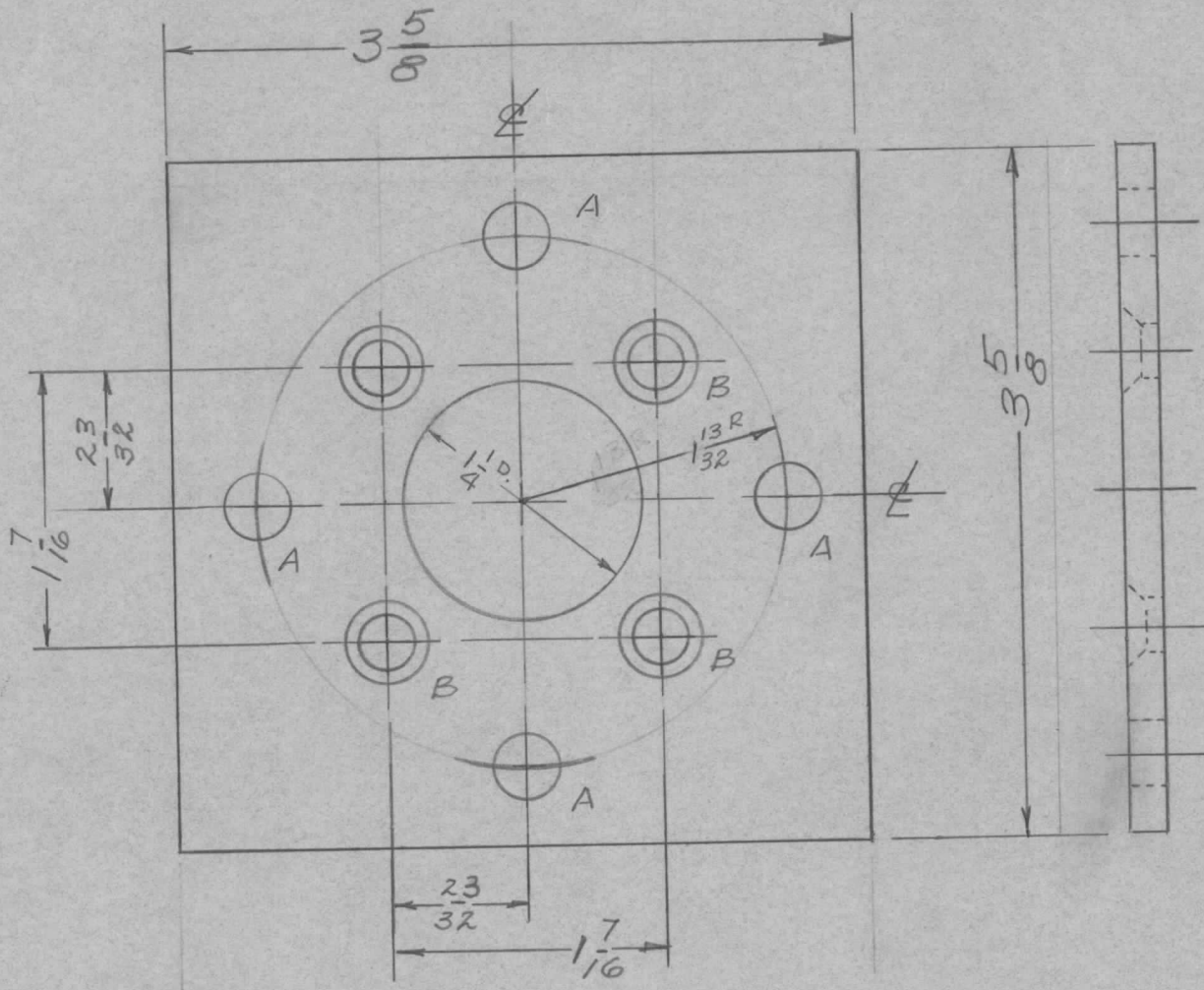


REQ.	ITEM	PART NO.	DESCRIPTION			SYMBOL					
C	1	TYPE & TEMPER WAS 5052-H32	330-61	4536	WAF	9CB	THE TECHNICAL MATERIEL CORP. MAMARONECK, NEW YORK REAR STIFFNER				
B	1	PICTORIAL CLARIFIED	9/19/60	3003	CU	Joe					
A	1	3/8 WAS 3/32	4/26/60	H	WF	Joe					
ISSUE	ITEM	CHANGED FROM	DATE	CH. NO.	DRAFTS	CHECKER	ENG. APP.				
TOLERANCES			SCALE: 1/2 Size				6063-T5				
DEC. DIM. ±			MAXIMUM ALLOWABLE TOLERANCES HAVE BEEN DETERMINED AND ANY DEVIATIONS WILL BE CAUSE FOR REJECTION. REMOVE ALL BURRS AND SHARP EDGES				TYPE & TEMPER	HEAT TREAT. SPEC.	DRAWN	CHECKED	FINAL APPROVAL
FRAC. DIM. ± 1/64							5-404 Yellow Iridite				
ANGULAR DIM. ±			FINISH & SPEC. NO.				ELEC. DES. APP	MECH. DES. APP	MS-1863	C	



REQ. PER UNIT	USED ON		
	MODEL	ASS'Y. NO.	DATE
1	GPT-10K		9-8-59

MS-1864



A -  $\frac{5}{16}$  (.312) DIA HOLE 4 REQ.  
 B - D'SINK FOR  $\frac{1}{4}$ -20 FHS 4 REQ.

							REQ.	ITEM	PART NO.	DESCRIPTION		SYMBOL				
										THE TECHNICAL MATERIEL CORP.						
										MAMARONECK, NEW YORK						
										PLATE, ADAPTER						
										JJS						
ISSUE	ITEM	CHANGED FROM	DATE	CH. NO.	DRAFTS	CHECKER	ENG. APP.									
TOLERANCES			SCALE: <i>to</i>													
DEC. DIM. ±			MAXIMUM ALLOWABLE TOLERANCES HAVE BEEN DETERMINED AND ANY DEVIATIONS WILL BE CAUSE FOR REJECTION. REMOVE ALL BURRS AND SHARP EDGES													
FRAC. DIM. ± <i>1/64</i>																
ANGULAR DIM. ±																
							2024-T3									
							5404-IRIDITE									
							FINISH & SPEC. NO.									
										DRAWN	CHECKED	FINAL APPROVAL				
										<i>86</i>		<i>AMP</i>				
												MS-1864				
										ELEC. DES. APP	MECH. DES. APP					

UNLESS OTHERWISE SPECIFIED  
DIMENSIONS ARE IN INCHES AND INCLUDE  
CHEMICALLY APPLIED OR PLATED FINISHES

DECIMALS  
.X ± .05  
.XX ± .01  
.XXX ± .005

TOLERANCES

FRACTIONS  
± 1/64  
ANGLES  
± 0° 30'

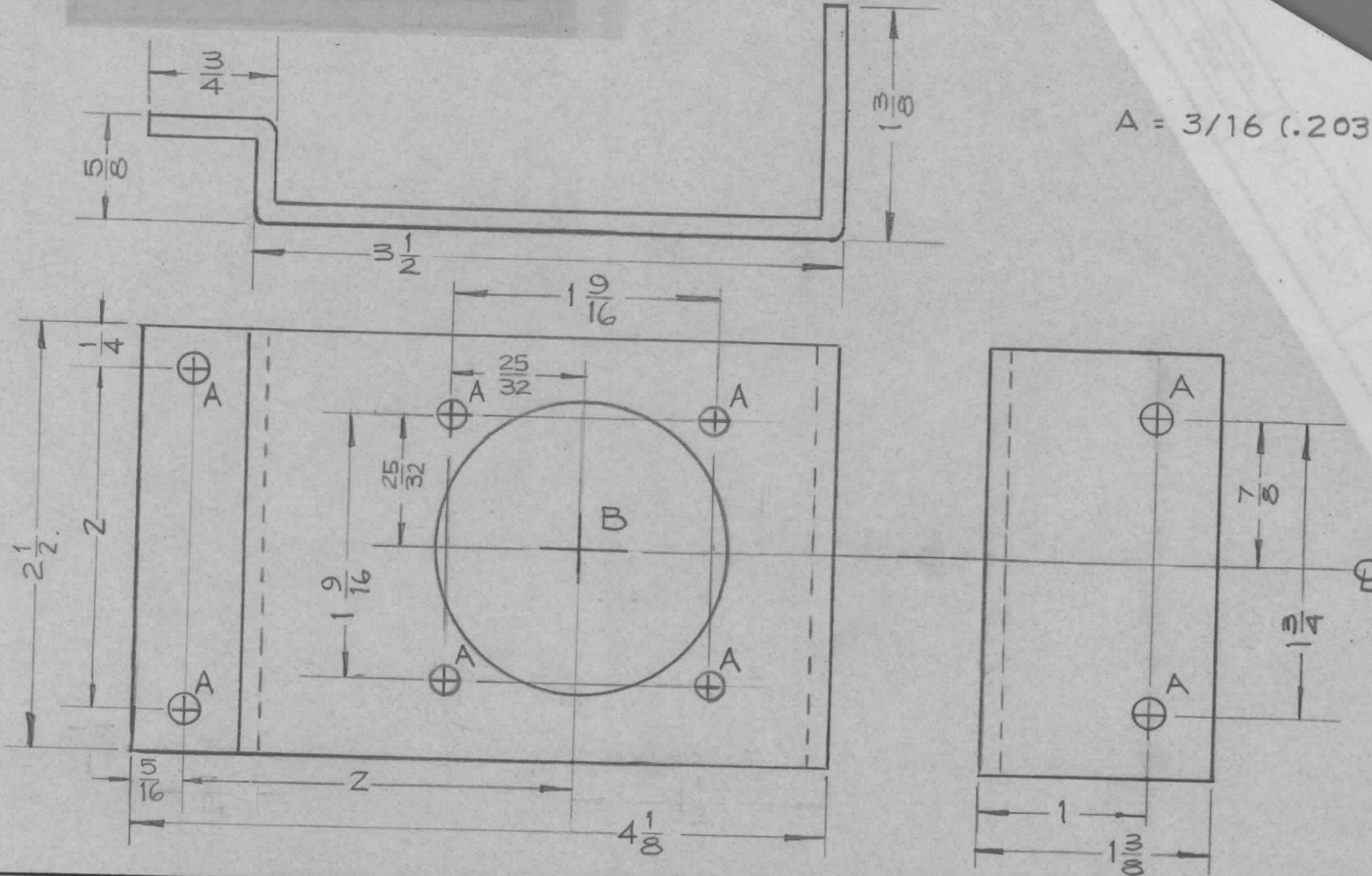
CUT HERE  
GUARANTEED  
2-56

REQ.  
PER  
UNIT

MODEL

ASSY.

SBT-1K



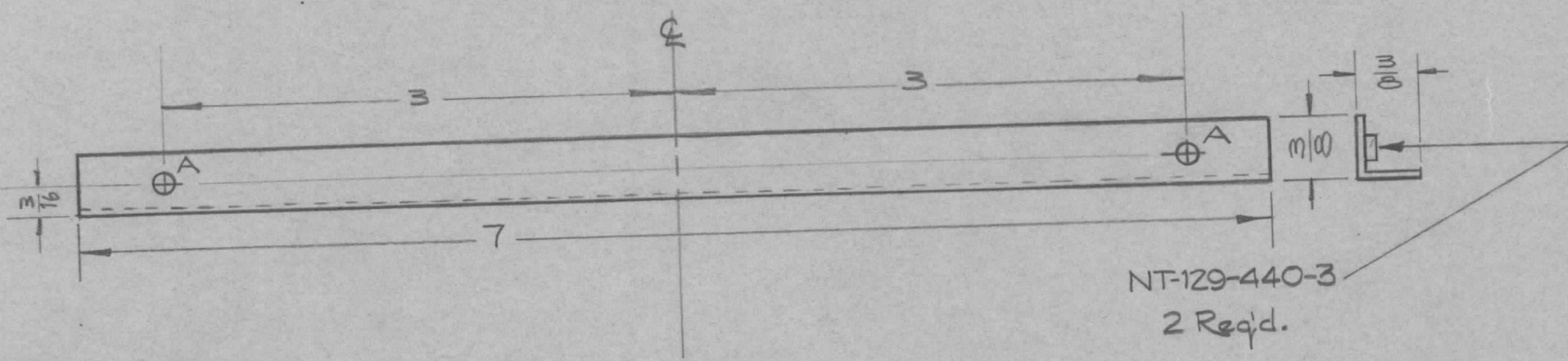
A = 3/16 (.203) Dia.

ISSUE	ITEM	CHANGED FROM	DATE	CH. NO.	DRAFTS	CHECKER	ENG. APP.	REQ. ITEM	PART NO.	DESCRIPTION	SYMBOL	
								1/8		THE TECHNICAL MATERIEL CORP.		
								STOCK SIZE		MAMARONECK, NEW YORK		
								ALUMINUM		PLUG BRACKET, PLUG		
								MATERIAL				
TOLERANCES			SCALE:					5052-H32		<i>D. MANCUSO</i>	<i>J. I. O.</i>	<i>C. Y. B.</i>
DEC. DIM. ± FRAC. DIM. ± ANGULAR DIM. ±			MAXIMUM ALLOWABLE TOLERANCES HAVE BEEN DETERMINED AND ANY DEVIATIONS WILL BE CAUSE FOR REJECTION. REMOVE ALL BURRS AND SHARP EDGES					TYPE & TEMPER S-404 Yellow Iridite	HEAT TREAT. SPEC.	DRAWN	CHECKED	FINAL APPROVAL
								FINISH & SPEC. NO.		ELEC. DES. APP.	MECH. DES. APP.	MS-1874

REQ. PER UNIT 2	USED ON		MS-1876
	MODEL	ASS'Y. NO.	
	SBT-1K		
		DATE	
		9-17-59	

Holes  
A-7/64(.113)

Req'd  
2



NT-129-440-3  
2 Req'd.

UNLESS OTHERWISE SPECIFIED  
DIMENSIONS ARE IN INCHES AND INCLUDE  
CHEMICALLY APPLIED OR PLATED FINISHES

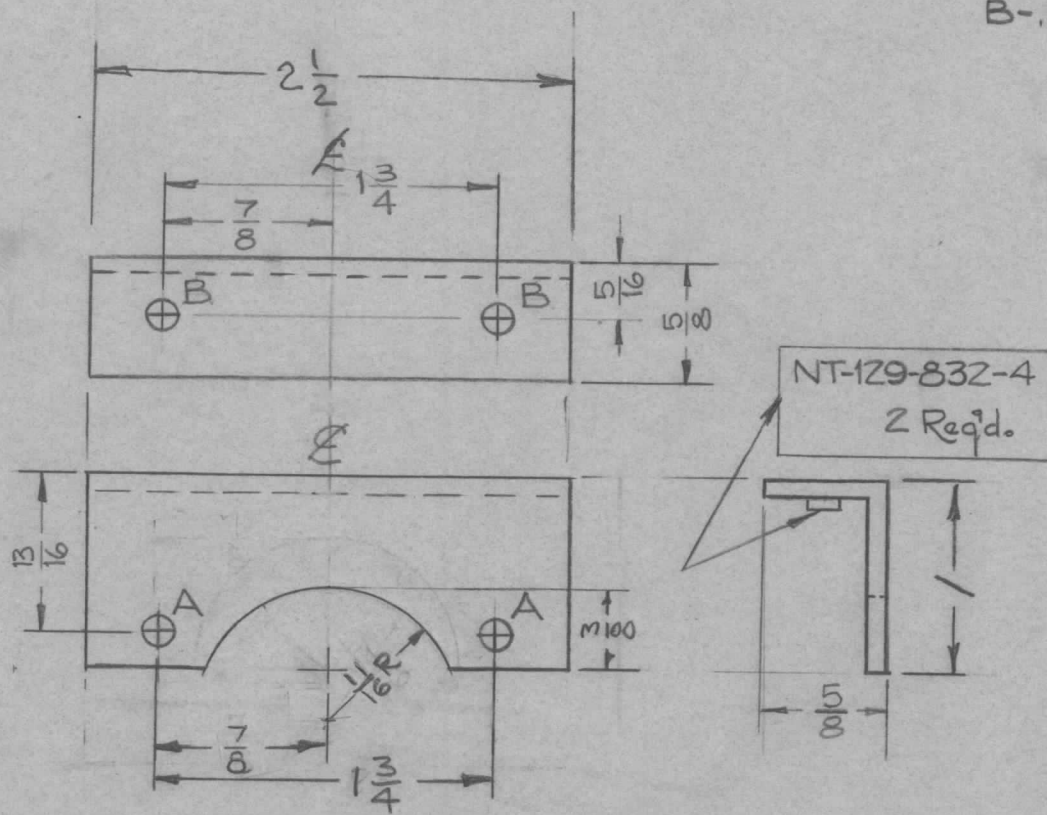
DECIMALS	TOLERANCES	FRACTIONS
.X ± .05		± 1/64
.XX ± .01		ANGLES
.XXX ± .005		± 0° 30'

CUT HERE  
GUARANTEED  
2-60

ISSUE	ITEM	CHANGED FROM	DATE	CH. NO.	DRAFTS	CHECKER	ENG. APP.	REQ.	ITEM	PART NO.	DESCRIPTION	SYMBOL
										040	THE TECHNICAL MATERIEL CORP.	
										STOCK SIZE	MAMARONECK, NEW YORK	
										ALUMINUM	FILTER RETAINING BRACKET	
										MATERIAL		
										5052-H32	<i>D. Mancus</i>	<i>CRB</i>
										TYPE & TEMPER	CHECKED	FINAL APPROVAL
										HEAT TREAT. SPEC.	<i>[Signature]</i>	
										FINISH & SPEC. NO.		MS-1876
											ELEC. DES. APP.	

REQ. PER UNIT	USED ON			MS-1878	A
	MODEL	ASS'Y. NO.	DATE		
2	SBT-1K		9-17-59		
1	SBG-1L	RAK-20	12-19-61		

Holes  
 A-11/64(.171)Dim. 2  
 B-.221-.224 Dim (For NT-129-832-4) 2

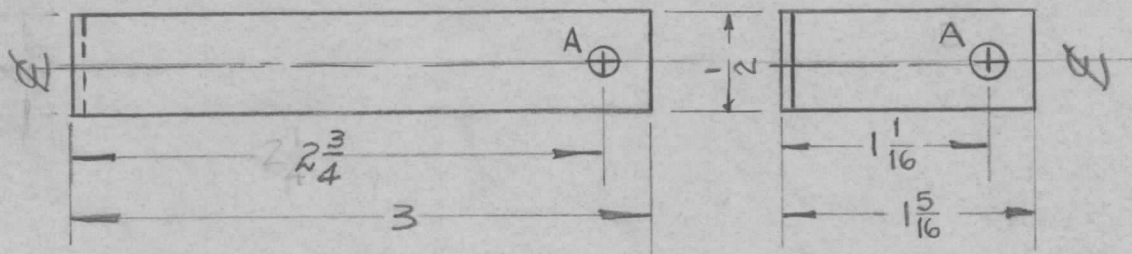


ISSUE	ITEM	CHANGED FROM	DATE	CH. NO.	DRAFTS	CHECKER	ENG. APP.	REQ. ITEM	PART NO.	DESCRIPTION	SYMBOL		
								.081		THE TECHNICAL MATERIEL CORP. MAMARONECK, NEW YORK			
								STOCK SIZE					
A	1	1 3/8 DIA. CHG. TO 1/16 R	9/2/60	2171	CS	HJE	dm	ALUMINUM		MOUNTING BRACKET.			
								MATERIAL		SPRING MOTOR			
TOLERANCES								5052-H32		DMANCVSA	HJE	dm	MLB
SCALE:								TYPE & TEMPER	HEAT TREAT. SPEC.	DRAWN	CHECKED	FINAL APPROVAL	
DEC. DIM. ± FRAC. DIM. ± 1/64 ANGULAR DIM. ±								S-404 Yellow Iridite				MS-1878 A	
MAXIMUM ALLOWABLE TOLERANCES HAVE BEEN DETERMINED AND ANY DEVIATIONS WILL BE CAUSE FOR REJECTION. REMOVE ALL BURRS AND SHARP EDGES								FINISH & SPEC. NO.		ELEC. DES. APP	MECH. DES. APP		

REQ. PER. UNIT	USED ON			MS-1879
	MODEL	ASS'Y. NO.	DATE	
2	SBT-1K		9-17-59	

Holes  
A-11/64(.171) Dim.

Req'd.  
2



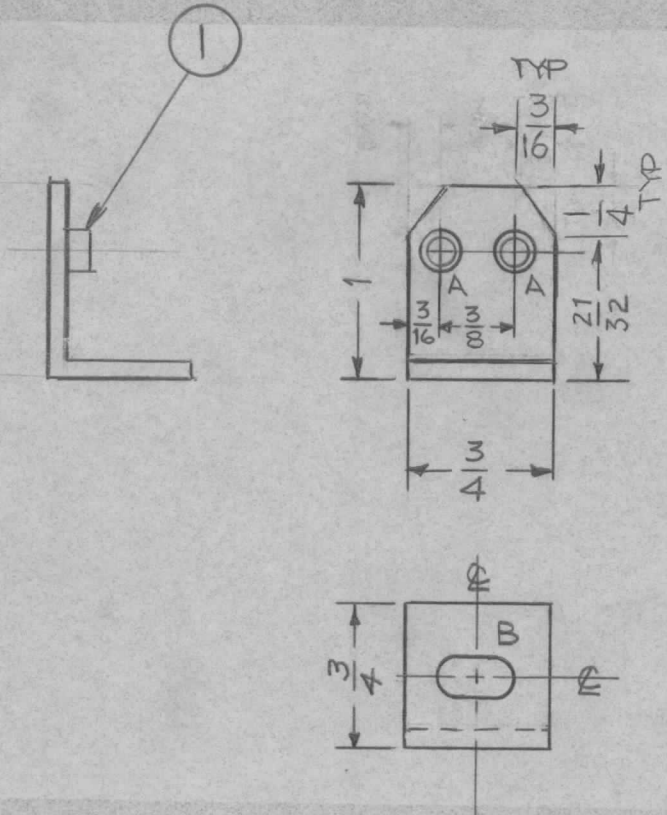
UNLESS OTHERWISE SPECIFIED  
DIMENSIONS ARE IN INCHES AND INCLUDE  
CHEMICALLY APPLIED OR PLATED FINISHES

DECIMALS	TOLERANCES	FRACTIONS
.X ± .05		± 1/64
.XX ± .01		ANGLES
.XXX ± .005		± 0° 30'

CUT HERE  
GUARANTEED  
2-66

ISSUE	ITEM	CHANGED FROM	DATE	CH. NO.	DRAFTS	CHECKER	ENG. APP.	REQ.	ITEM	PART NO.	DESCRIPTION	SYMBOL
										.081	THE TECHNICAL MATERIEL CORP.	
										STOCK SIZE	MAMARONECK, NEW YORK	
										ALUMINUM	CABLE BRACKET,	
										MATERIAL	RETRACTING SPRING	
										5052-H32	<i>D. MANCE</i>	<i>CMB</i>
										TYPE & TEMPER	CHECKED	FINAL APPROVAL
										HEATTREAT. SPEC.	<i>JPB</i>	MS-1879
										FINISH & SPEC. NO.	ELEC. DES. APP	
										S-404 Yellow Iridite	MECH. DES. APP	

REQ. PER. UNIT	USED ON			MS 1881	E
	MODEL	ASS'Y. NO.	DATE		
6	TU-2	A-1769	9-22-59		

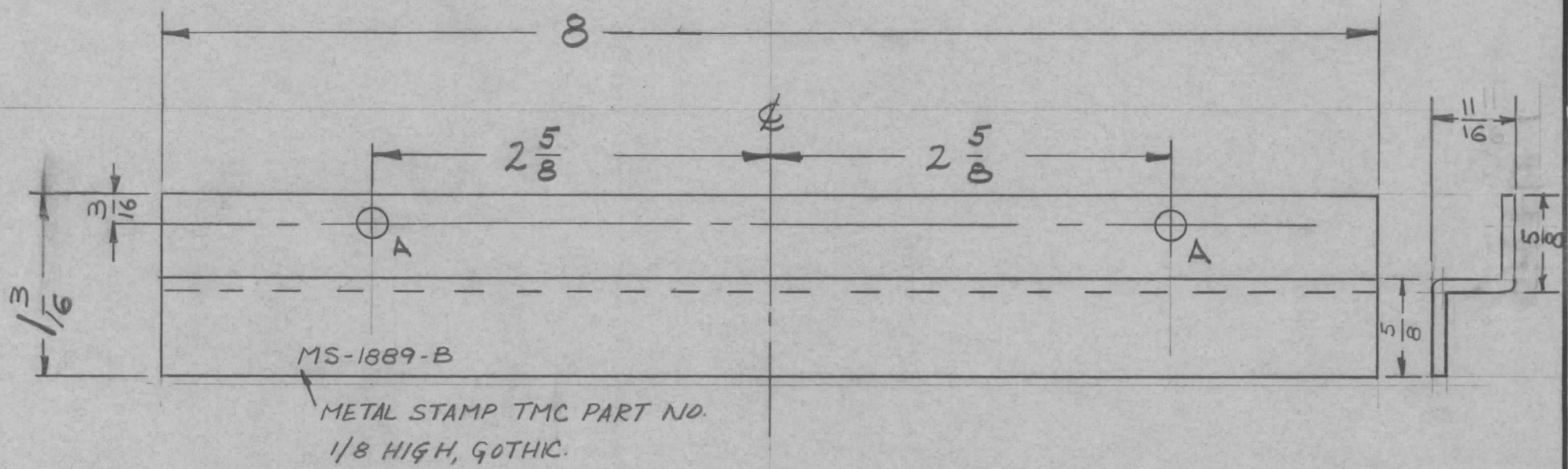


A - .221 - .224 DIA - 2 REQ'D  
 B - 13/64 X 13/32 SLOT - 1 REQ'D

E		1/4" HOLE WAS 13/64 DIA ITEM (U) ADD	5-5-80	21800	G.D.L	dw	<del>dw</del>	2	1	NT129-0832-4	NUT, ROUND SWAGE	Δ	
D		DRAWING UPDATED	1-5-67	17059	RME	QCB	QCB	REQ.	ITEM	PART NO.	DESCRIPTION	SYMBOL	
C	1	ON (-4) 3/16 WAS 5/32	2.13.65	13466	WJB	QCB	QCB	1/8 THK X 3/4 X 1		THE TECHNICAL MATERIEL CORP. MAMARONECK, NEW YORK			
B	1	ON MS-1881-4 3/16 X 1/4 NOTCH ADD.	7.29.64	11952	WJB	QCB	WJB	STOCK SIZE ALUMINUM		BRACKET, COIL MTG.			
A	1	MS-1881-3 Holes chgd to match MS-1815	9/24/59	1348	WJB	QCB	QCB	MATERIAL 5052-H32		16/22/59	QCB	QCB	
ISSUE	ITEM	CHANGED FROM	DATE	CH. NO.	DRAFTS	CHECKER	ENG. APP.	TYPE & TEMPER 5404 IRIDITE		HEAT TREAT. SPEC.	DRAWN	CHECKED	FINAL APPROVAL
TOLERANCES			SCALE: FULL					FINISH & SPEC. NO.		ELEC. DES. APP	MECH. DES. APP	MS 1881	E
DEC. DIM. ± FRAC. DIM. ± 1/64 ANGULAR DIM. ±			MAXIMUM ALLOWABLE TOLERANCES HAVE BEEN DETERMINED AND ANY DEVIATIONS WILL BE CAUSE FOR REJECTION. REMOVE ALL BURRS AND SHARP EDGES										

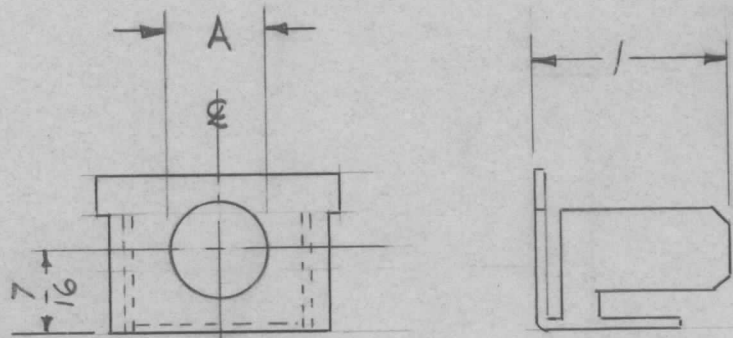
REQ. PER UNIT	USED ON			MS-1889	B
	MODEL	ASS'Y. NO.	DATE		
2	CPP-2		5-23-60		

A - 3/16 (187) D. 2 REQ.



REQ.	ITEM	PART NO.	DESCRIPTION				SYMBOL	
		.051	THE TECHNICAL MATERIEL CORP.					
		STOCK SIZE	MAMARONECK, NEW YORK					
B	1	5/8" DIM ADDED	BRACKET, FILTER SLIDE					
A	1	COMPLETE REDESIGN						
ISSUE	ITEM	CHANGED FROM	DATE	CH. NO.	DRAFTS	CHECKER	ENG. APP.	
TOLERANCES			SCALE:					
DEC. DIM. ±			MAXIMUM ALLOWABLE TOLERANCES HAVE BEEN DETERMINED AND ANY DEVIATIONS WILL BE CAUSE FOR REJECTION:					
FRAC. DIM. ± 1/64			REMOVE ALL BURRS AND SHARP EDGES					
ANGULAR DIM. ±								
		5052-H32	TYPE & TEMPER		HEATTREAT. SPEC.	DRAWN	CHECKED	FINAL APPROVAL
		S-404-YEL. IRIDITE						
		FINISH & SPEC. NO.	ELEC. DES. APP		MECH. DES. APP	MS-1889		B

REQ. PER. UNIT	USED ON			MS-1890
	MODEL	SECTION	DATE	
2	SBT-1K	AX-197	9-18-59	



TMC PART NO.	DIM.
MS-1890-1	A
	1/2

NOTE: MODIFY TMC PO 161 AS SHOWN (SEE CHART)

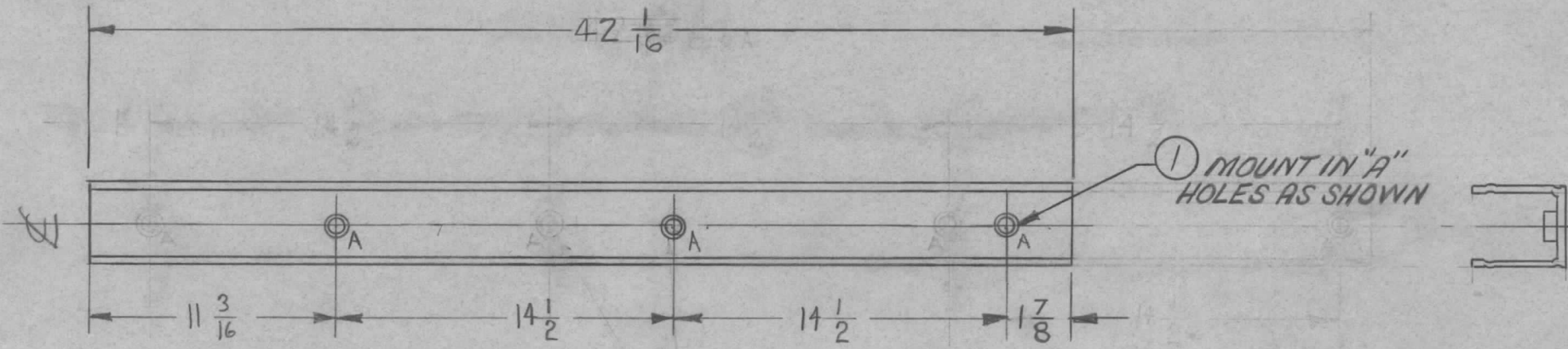
UNLESS OTHERWISE SPECIFIED DIMENSIONS ARE IN INCHES AND INCLUDE CHEMICALLY APPLIED OR PLATED FINISHES		
DECIMALS	TOLERANCES	FRACTIONS
.X ± .05		± 1/64
.XX ± .01		ANGLES
.XXX ± .005		± 0° 30'

CUT HERE  
GUARANTEED  
2-66

ISSUE	ITEM	CHANGED FROM	DATE	CH. NO.	DRAFTS	CHECKER	ENG. APP.	REQ.	ITEM	PART NO.	DESCRIPTION	SYMBOL	
											<b>THE TECHNICAL MATERIEL CORP.</b> MAMARONECK, NEW YORK END FITTING, BLANK CONNECTOR STRIP		
TOLERANCES								SCALE:					
DEC. DIM. ± FRAC. DIM. ± ANGULAR DIM. ±								MAXIMUM ALLOWABLE TOLERANCES HAVE BEEN DETERMINED AND ANY DEVIATIONS WILL BE CAUSE FOR REJECTION. REMOVE ALL BURRS AND SHARP EDGES					
								TYPE & TEMPER	HEATTREAT. SPEC.	DRAWN	CHECKED	FINAL APPROVAL	
								FINISH & SPEC. NO.		ELEC. DES. APP	MECH. DES. APP	MS-1890	



REQ. PER. UNIT	USED ON			MS-1891	C
	MODEL	SECTION	DATE		
1	RAK-9	AX-197	9-25-59		



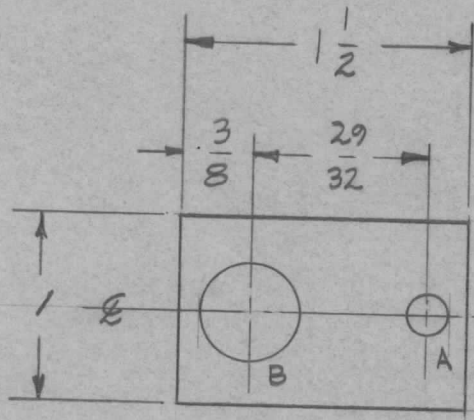
A = .191 ~ .194 DIA.

UNLESS OTHERWISE SPECIFIED  
DIMENSIONS ARE IN INCHES AND INCLUDE  
CHEMICALLY APPLIED OR PLATED FINISHES

DECIMALS	TOLERANCES	FRACTIONS
.X ± .05		± 1/64
.XX ± .01		ANGLES
.XXX ± .005		± 0° 30'

2		1		NT129-632-3		NUT, PLN, SPLINE		
REQ.	ITEM	PART NO.		DESCRIPTION			SYMBOL	
				THE TECHNICAL MATERIEL CORP.				
		STOCK SIZE		MAMARONECK, NEW YORK				
		MATERIAL		A.C. STRIP CHANNEL				
				SBT-1K				
ISSUE	ITEM	CHANGED FROM	DATE	CH. NO.	DRAFTS	CHECKER	ENG. APP.	
C		BUILDUP ADDED	3-22-67	18025	L.A.K.	Hde		
B	3	⊙ A HOLE DELETED	12/2/60	3636	Ru	JCB	Gr.	
	2	Dim 1 7/8 Was 14 1/2						
A	1	Overall Length was 57 1/4	2-8-60	1842	WF	Hde		
	2	4" HOLES RELOCATED						
	1	57 1/4 WAS 45"						
TOLERANCES			SCALE:					
DEC. DIM. ±			MAXIMUM ALLOWABLE TOLERANCES HAVE BEEN DETERMINED AND ANY DEVIATIONS WILL BE CAUSE FOR REJECTION.					
FRAC. DIM. ±			REMOVE ALL BURRS AND SHARP EDGES					
ANGULAR DIM. ±			TYPE & TEMPER		HEATTREAT. SPEC.		DRAWN	
							CHECKED	
			FINISH & SPEC. NO.		ELEC. DES. APP.		MECH. DES. APP.	
							MS-1891 C	

REQ. PER UNIT	USED ON			MS-1892
	MODEL	ASS'Y. NO.	DATE	
2	GPT-10K	AX-138	9-17-59	



A - 11/64 (.171) DIA,

1 REQ'D.

B - 1/2 (.5) DIA

1 REQ'D.

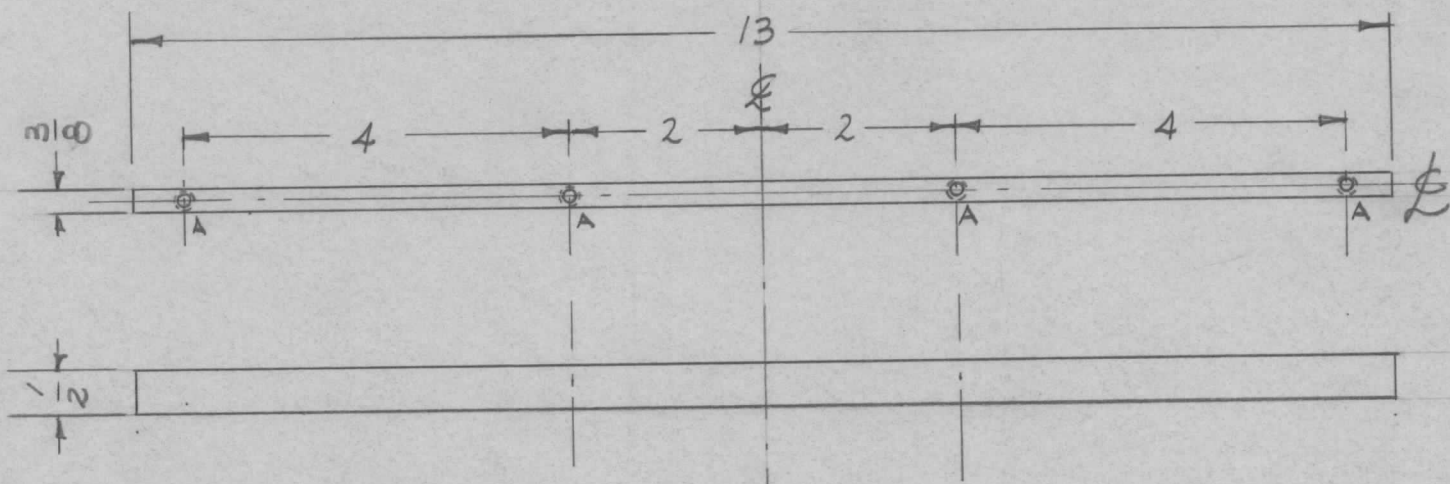
UNLESS OTHERWISE SPECIFIED  
DIMENSIONS ARE IN INCHES AND INCLUDE  
CHEMICALLY APPLIED OR PLATED FINISHES

DECIMALS	FRACTIONS
.X ± .05	± 1/64
.XX ± .01	ANGLES
.XXX ± .005	± 0° 30'

CUT HERE  
GUARANTEED  
2-66

ISSUE	ITEM	CHANGED FROM	DATE	CH. NO.	DRAFTS	CHECKER	ENG. APP.	REQ.	ITEM	PART NO.	DESCRIPTION	SYMBOL		
										.081	THE TECHNICAL MATERIEL CORP. MAMARONECK, NEW YORK LUG, CAPACITOR GPT-10K			
										STOCK SIZE				
										ALUMINUM				
										MATERIAL				
TOLERANCES			SCALE:					TYPE & TEMPER		HEAT TREAT. SPEC.	DRAWN	CHECKED	FINAL APPROVAL	
DEC. DIM. ± FRAC. DIM. ± ANGULAR DIM. ±			MAXIMUM ALLOWABLE TOLERANCES HAVE BEEN DETERMINED AND ANY DEVIATIONS WILL BE CAUSE FOR REJECTION. REMOVE ALL BURRS AND SHARP EDGES					S404-IRIDITE						
								FINISH & SPEC. NO.		ELEC. DES. APP.	MECH. DES. APP.	MS-1892		

REQ. PER. UNIT	USED ON			MS-1895	A
	MODEL	ASS'Y. NO.	DATE		
1	APP-2		9-22-59		



A - DRILL AND TAP FOR 6-32 4 REQ'D.

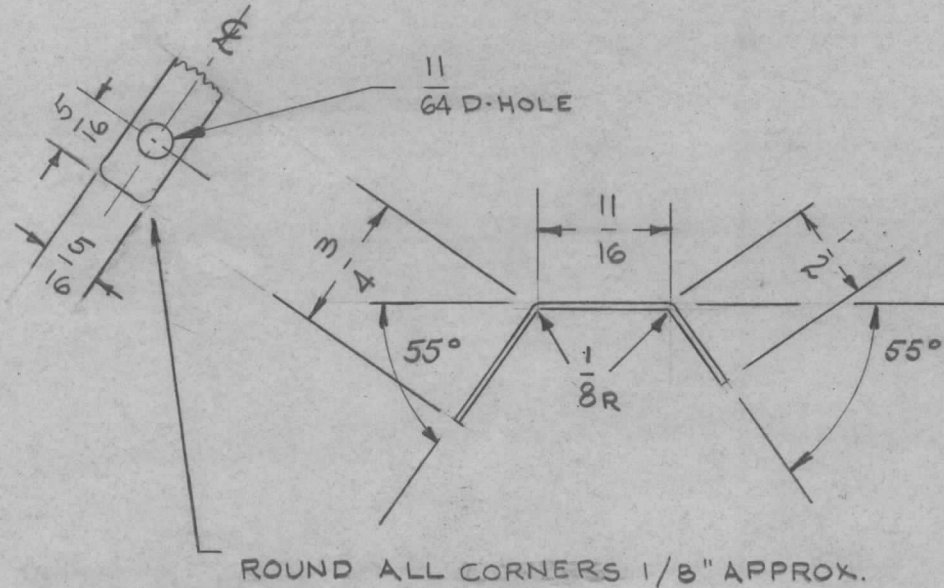
UNLESS OTHERWISE SPECIFIED  
DIMENSIONS ARE IN INCHES AND INCLUDE  
CHEMICALLY APPLIED OR PLATED FINISHES

DECIMALS	TOLERANCES	FRACTIONS
.X ± .05		± 1/64
.XX ± .01		ANGLES
.XXX ± .005		± 0° 30'

CUT HERE  
GUARANTEED  
2-66

ISSUE	ITEM	CHANGED FROM	DATE	CH. NO.	DRAFTS	CHECKER	ENG. APP.	REQ.	ITEM	PART NO.	DESCRIPTION	SYMBOL		
										1/4 x 1/2 RECT. BAR	THE TECHNICAL MATERIEL CORP.			
										STOCK SIZE	MAMARONECK, NEW YORK			
										ALUMINUM	PANEL STIFFENER			
										MATERIAL				
A	1	3/8 WAS 1/4	10-6 59			P.L.				2024-T4				
TOLERANCES			SCALE:					TYPE & TEMPER		HEAT TREAT. SPEC.	DRAWN	CHECKED	FINAL APPROVAL	
DEC. DIM. ± FRAC. DIM. ± ANGULAR DIM. ±			MAXIMUM ALLOWABLE TOLERANCES HAVE BEEN DETERMINED AND ANY DEVIATIONS WILL BE CAUSE FOR REJECTION. REMOVE ALL BURRS AND SHARP EDGES					S404 IRIDIUM			P.A.		MS-1895	A
								FINISH & SPEC. NO.		ELEC. DES. APP	MECH. DES. APP			

REQ. PER UNIT	USED ON			MS-1897	A
	MODEL	ASS'Y. NO.	DATE		
3	AX-171		10-12-59		
3	AX-198		10-12-59		
3	RFB-1		10-12-59		
3	RFD-1		10-19-59		



NOTICE TO PERSONS RECEIVING THIS DRAWING

THE TECHNICAL MATERIEL CORPORATION claims proprietary right in the material disclosed hereon. This drawing is issued in confidence for engineering information only and may not be reproduced or used to manufacture anything shown hereon without permission from THE TECHNICAL MATERIEL CORPORATION to the user. This drawing is loaned for mutual assistance and is subject to recall at any time.

Property of:

THE TECHNICAL MATERIEL CORPORATION  
MAMARONECK, NEW YORK

UNLESS OTHERWISE SPECIFIED DIMENSIONS ARE IN INCHES AND INCLUDE CHEMICALLY APPLIED OR PLATED FINISHES	
DECIMALS .X ± .05 .XX ± .01 .XXX ± .005	FRACTIONS ± 1/64 ANGLES ± 0° 30'
TOLERANCES	

CUT HERE  
GUARANTEED  
2-66

								REQ. ITEM	PART NO.	DESCRIPTION	SYMBOL	
								#22 (.025)		THE TECHNICAL MATERIEL CORP.		
								STOCK SIZE		MAMARONECK, NEW YORK		
								PHOS. BRONZE		SPRING CONTACT		
								MATERIAL				
A	1	ROUND ALL CORNERS 1/8" APPROX	10-19 59	*	POD	JHE	AMP	GRADE A				
ISSUE	ITEM	CHANGED FROM	DATE	CH. NO.	DRAFTS	CHECKER	ENG. APP.					
TOLERANCES			SCALE:									
DEC. DIM. ± FRAC. DIM. ± ANGULAR DIM. ±			MAXIMUM ALLOWABLE TOLERANCES HAVE BEEN DETERMINED AND ANY DEVIATIONS WILL BE CAUSE FOR REJECTION. REMOVE ALL BURRS AND SHARP EDGES									
								TYPE & TEMPER	HEATTREAT. SPEC.	DRAWN	CHECKED	FINAL APPROVAL
								SILVER PLATE .001				
								FINISH & SPEC. NO.	ELEC. DES. APP	MECH. DES. APP	MS-1897	A