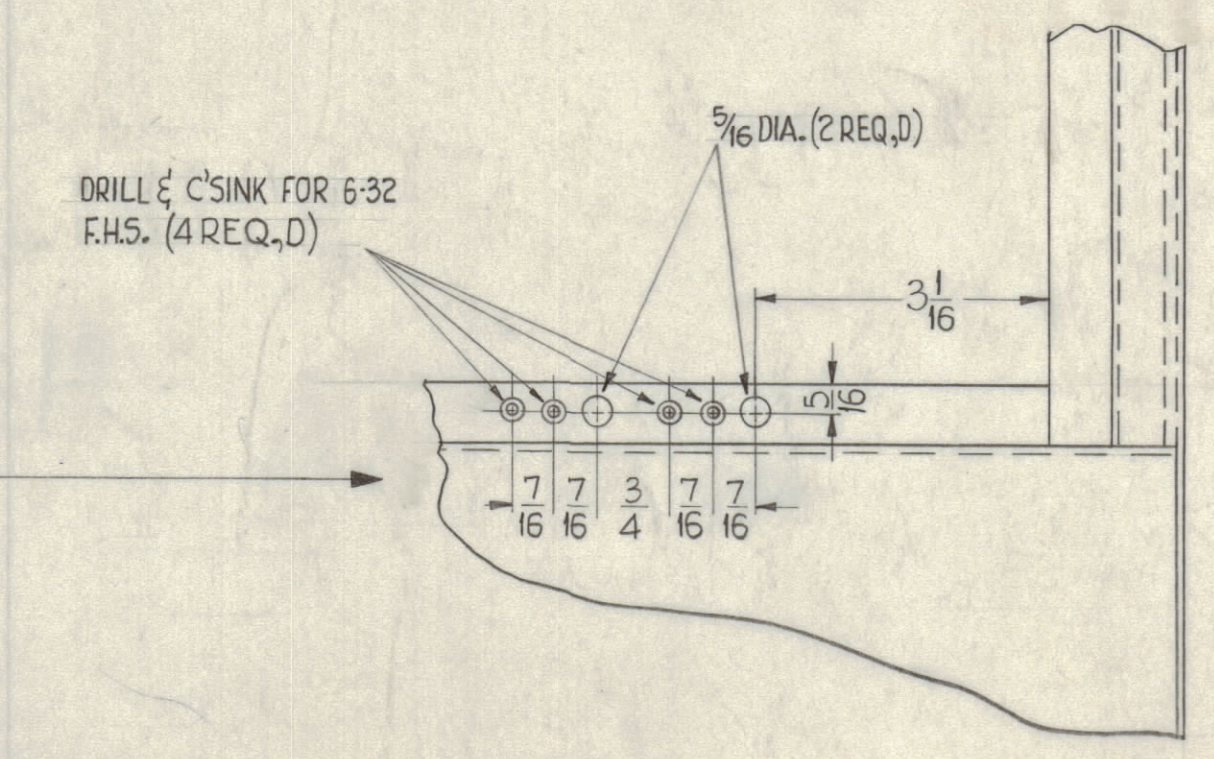


HOLES ~
 A ~ 3/16 DIA. (187)
 B ~ 1/64 DIA. (203)

REQ. D
 3
 19



DRILL & CHAMFER FOR 6-32
 F.H.S. (4 REQ. D)

NOTICE TO PERSONS RECEIVING THIS DRAWING
 THE TECHNICAL MATERIEL CORPORATION claims proprietary right in the material disclosed herein. This drawing is issued in confidence for engineering information only and may not be reproduced or used to manufacture anything shown hereon without permission from THE TECHNICAL MATERIEL CORPORATION to the user. This drawing is loaned for mutual assistance and is subject to recall at any time.
 Property of:
 THE TECHNICAL MATERIEL CORPORATION
 MAMARONECK, NEW YORK

REF. ~ MS-2513 (REAR DOOR).
 REF. ~ LD-633 (LETTERING, REAR VIEW BOTTOM).
 REF. ~ MS-2509 -2 (RACK, BASIC) 5 Sheets.

| | | | | | | | |
|--|------|---------------------------------------|--|---------|--------|---------|-----------|
| K | E6 | Added (2) "B" holes on Right Side. | 4-26-61 | 4756 | DJM | WLB | WLB |
| J | E10 | On-Left Side: 2 @ Holes Added | 2-15-61 | 4179 | ELL | WLB | WLB |
| H | --- | Revised & Redrawn From 6 Sheets to 1. | 2/1/61 | 4046 | D.J.M. | WLB | WLB |
| SYM | ZONE | DESCRIPTION | DATE | CH. NO. | DRAFTS | CHECKER | ENG. APP. |
| UNLESS OTHERWISE SPECIFIED: | | | SCALE DO NOT SCALE | | | | |
| DIMENSIONS ARE IN INCHES | | | MAXIMUM ALLOWABLE TOLERANCES HAVE BEEN DETERMINED AND ANY DEVIATIONS WILL BE CAUSE FOR REJECTION. REMOVE ALL BURRS & SHARP EDGES | | | | |
| TOLERANCES ON FRACTIONS ± 1/64 DECIMALS ± .005 ANGLES ± 1/2° | | | | | | | |

| | | | | | | | | |
|---------------|-------|---------|-----------|--------|--------------------|-----------------|-----------------|-----------|
| REQ. PER UNIT | MODEL | SECTION | ASSY. NO. | DATE | FINISH & SPEC. NO. | ELEC. DES. APP. | MECH. DES. APP. | SHEET OF |
| 1 | RAK-9 | | | 2-1-61 | | | | MS-1896 K |
| USED ON | | | | | | | | |

MS-1896 K