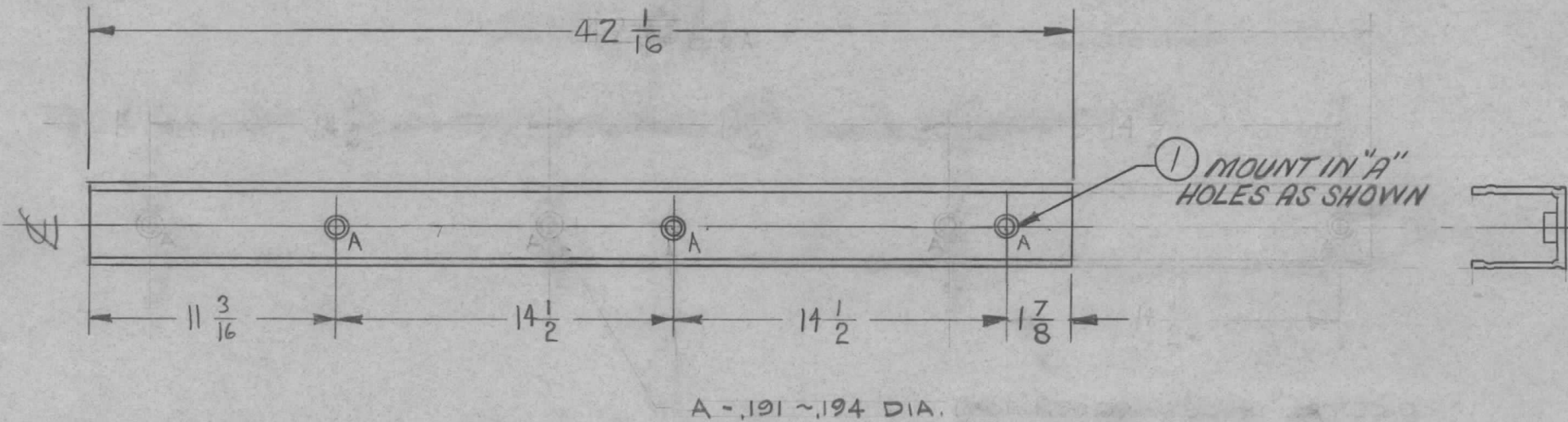


REQ. PER. UNIT	USED ON			MS-1891 C
	MODEL	SECTION	DATE	
1	RAK-9	AX-197	9-25-59	



UNLESS OTHERWISE SPECIFIED
DIMENSIONS ARE IN INCHES AND INCLUDE
CHEMICALLY APPLIED OR PLATED FINISHES

DECIMALS	TOLERANCES	FRACTIONS
.X ± .05		± 1/64
.XX ± .01		ANGLES
.XXX ± .005		± 0° 30'

2		1		NT129-632-3		NUT, PLN, SPLINE		
REQ.	ITEM	PART NO.		DESCRIPTION			SYMBOL	
				THE TECHNICAL MATERIEL CORP.				
		STOCK SIZE		MAMARONECK, NEW YORK				
		MATERIAL		A.C. STRIP CHANNEL				
				SBT-1K				
ISSUE	ITEM	CHANGED FROM	DATE	CH. NO.	DRAFTS	CHECKER	ENG. APP.	
C		BUILDUP ADDED	3-22-67	18025	L.A.K.	Jide		
B	3	ØA HOLE DELETED	12/2/60	3636	Ru	JAB	Jr.	
	2	Dim 1 7/8 Was 14 1/2						
A	1	Overall Length was 57 1/4	2-8-60	1842	WF	Jide		
	2	4'A HOLES RELOCATED						
	1	57 1/4 WAS 45"						
TOLERANCES			SCALE:					
DEC. DIM. ±			MAXIMUM ALLOWABLE TOLERANCES HAVE BEEN DETERMINED AND ANY DEVIATIONS WILL BE CAUSE FOR REJECTION.					
FRAC. DIM. ±			REMOVE ALL BURRS AND SHARP EDGES					
ANGULAR DIM. ±			TYPE & TEMPER		HEATTREAT. SPEC.		DRAWN	
							CHECKED	
			FINISH & SPEC. NO.		ELEC. DES. APP.		MECH. DES. APP.	
							MS-1891 C	