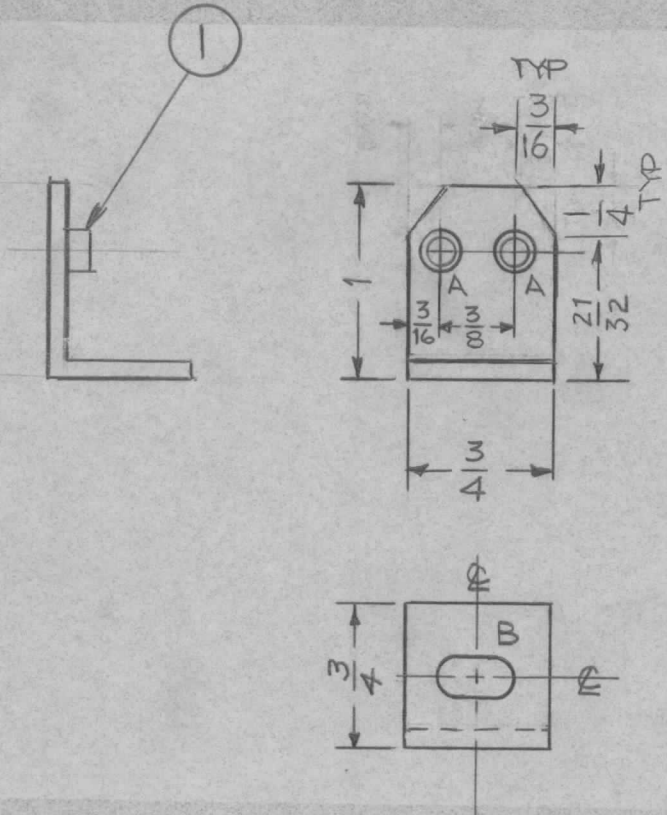


REQ. PER. UNIT	USED ON			MS 1881	E
	MODEL	ASS'Y. NO.	DATE		
6	TU-2	A-1769	9-22-59		



A - .221 - .224 DIA - 2 REQ'D
 B - 13/64 X 13/32 SLOT - 1 REQ'D

E		1/4" HOLE WAS 13/64 DIA ITEM (U) ADD	5-5-80	21800	G.D.L	dw	JK	2	1	NT129-0832-4	NUT, ROUND SWAGE	Δ		
D		DRAWING UPDATED	1-5-67	17059	RME	JK	JK	REQ. ITEM		PART NO.	DESCRIPTION	SYMBOL		
C	1	ON (-4) 3/16 WAS 5/32	2.13.65	13466	WJB	JK	JK	1/8 THK X 3/4 X 1			THE TECHNICAL MATERIEL CORP.			
B	1	ON MS-1881-4 3/16 X 1/4 NOTCH ADD.	7.29.64	11952	WJB	JK	WJB	STOCK SIZE			MAMARONECK, NEW YORK			
A	1	MS-1881-3 Holes chgd to match MS-1815	9/24/59	1348	WJB	JK	ONE	MATERIAL			BRACKET, COIL MTG.			
ISSUE	ITEM	CHANGED FROM	DATE	CH. NO.	DRAFTS	CHECKER	ENG. APP.	5052-H32		16 ⁹ /22/59	JK	ONE		
TOLERANCES			SCALE: FULL					TYPE & TEMPER		HEAT TREAT. SPEC.	DRAWN	CHECKED	FINAL APPROVAL	
DEC. DIM. ±			MAXIMUM ALLOWABLE TOLERANCES HAVE BEEN DETERMINED AND ANY DEVIATIONS WILL BE CAUSE FOR REJECTION. REMOVE ALL BURRS AND SHARP EDGES					5404 IRIDITE					MS 1881	E
FRAC. DIM. ± 1/64								FINISH & SPEC. NO.		ELEC. DES. APP	MECH. DES. APP			
ANGULAR DIM. ±														