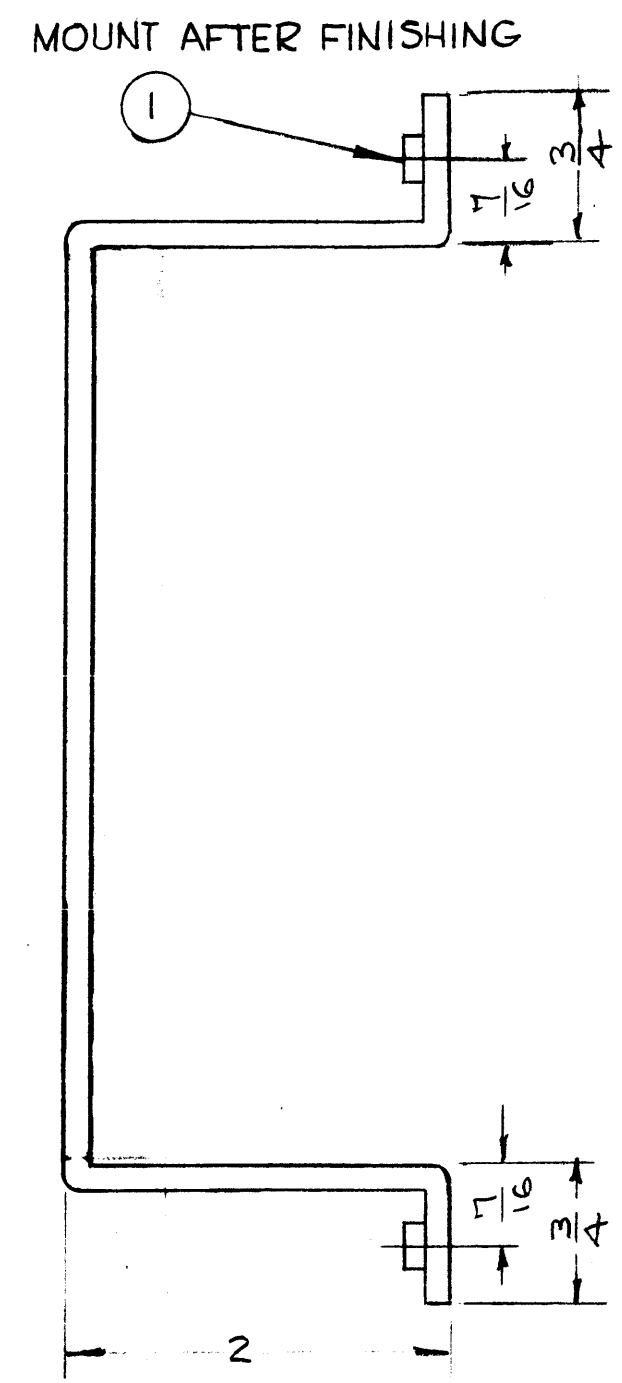
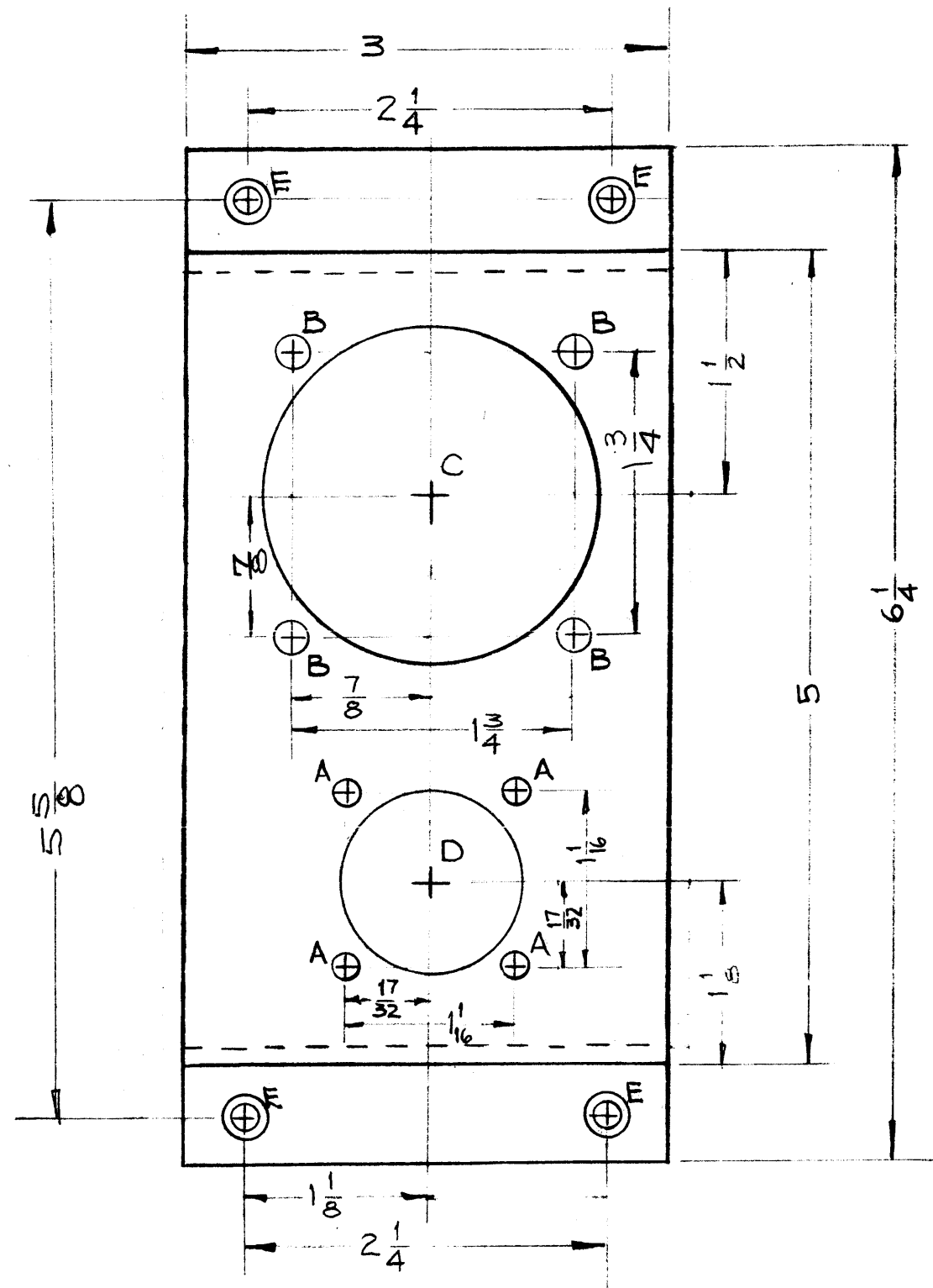


MS-1872



HOLE	REQ'D
A - 11/64 (.171) Dim.	4
B - 13/64 (.203) "	4
C - 2-1/16 (2.062) Dim	1
D - 1-1/8 (1.125) "	1
E - #2 DRILL (.221) DIA.	4

UNLESS OTHERWISE SPECIFIED:
USE MATERIAL THICKNESS FOR MAX. RADIUS ON ALL BENDS.

NOTICE TO PERSONS RECEIVING THIS DRAWING

THE TECHNICAL MATERIEL CORPORATION claims proprietary right in the material disclosed hereon. This drawing is issued in confidence for engineering information only and may not be reproduced or used to manufacture anything shown hereon without permission from THE TECHNICAL MATERIEL CORPORATION to the user. This drawing is loaned for mutual assistance and is subject to recall at any time.

Property of:
THE TECHNICAL MATERIEL CORPORATION
MAMARONECK, NEW YORK

REF - TMC DWG. NO. LD-631 (2)

ISSUE	ITEM	CHANGED FROM	DATE	CH. NO.	DRAFTS	CHECKER	ENG. APP.
C	2	DIM 1/4 WAS 1/8 ON C HOLE	2-14-61	4166	D.J.M.	OKB	[Signature]
B	1	1/2 LIP DELETED					
B	2	RIGHT TIP ADDED					
B	3	LEFT TIP ADDED					
A	3	NT-129-632-6 ADDED (2) LIP-15/16L (2) F HOLES ADD. CH. REV. 11/23/61	12-11-59	1656	J.C.B.	File	[Signature]

REQ. PER UNIT	MODEL	PROJECT NO.	ASS'Y. NO.	DATE
	RAK-17			1-23-61
	RAK-10			1-23-61
	RAK-9			1-23-61

REQ. ITEM	PART NO.	DESCRIPTION	SYMBOL
4	NT-129-832-4	NUT, SWAGE	
	1/8	STOCK SIZE	
	ALUMINUM	MATERIAL	
	5052-H32 T3 or 4	TYPE & TEMPER	
		HEAT TREAT. SPEC.	
		FINISH & SPEC. NO.	