

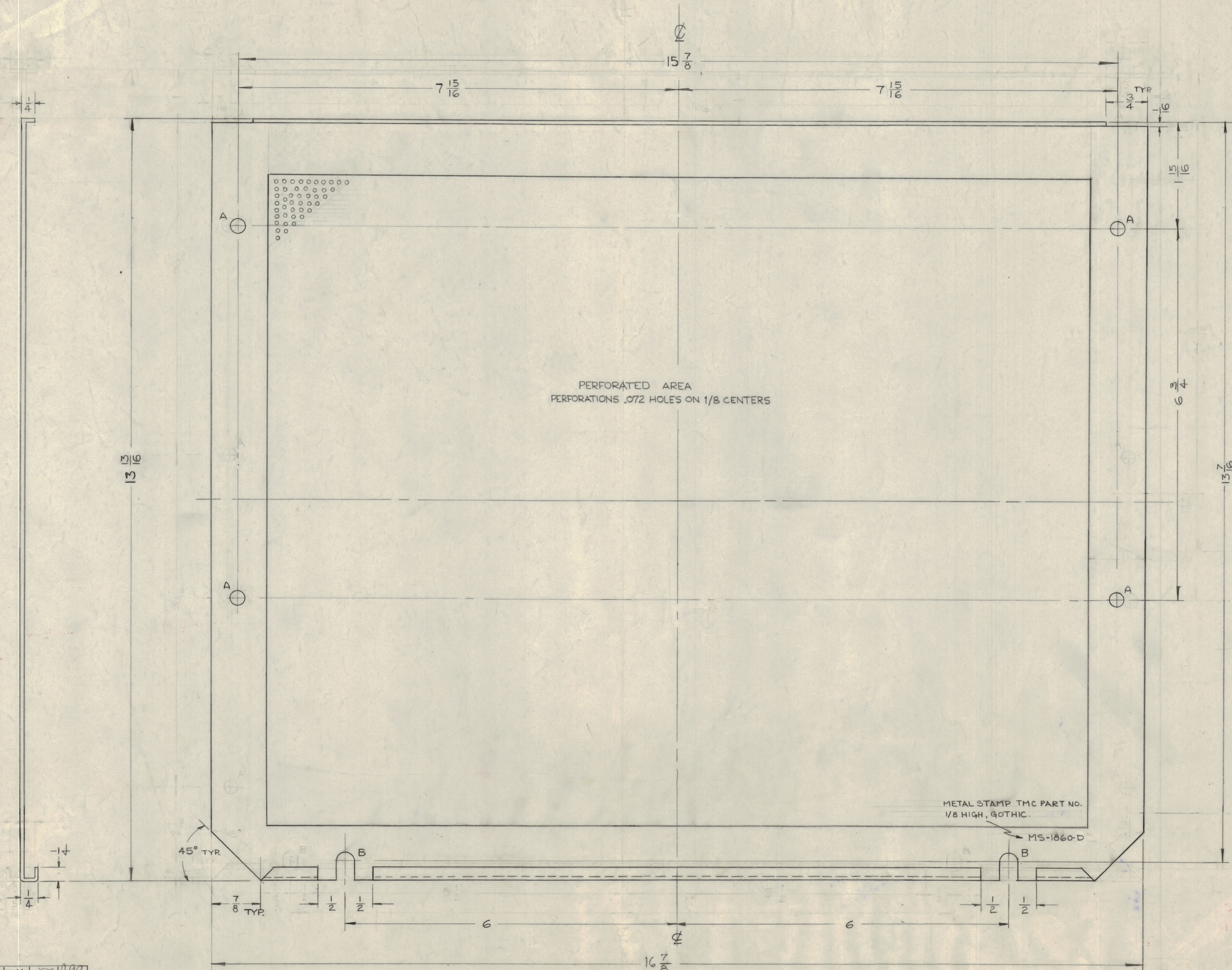
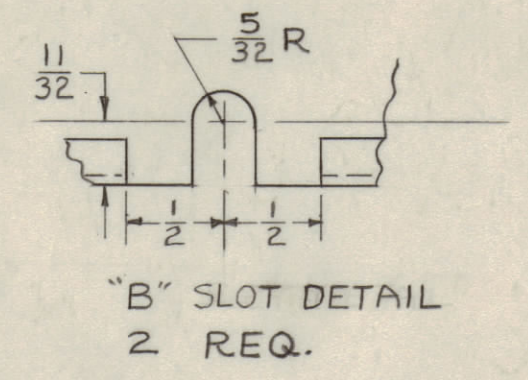
IF IT IS FOUND DESIRABLE TO CHANGE ANY TOLERANCE OR OTHER DETAIL SPECIFIED ON THIS DRAWING NOTIFY THE PURCHASER PROMPTLY.  
 MAXIMUM ALLOWABLE TOLERANCES HAVE BEEN DETERMINED AND DEVIATIONS WILL BE CAUSE FOR REJECTION. REMOVE ALL BURRS AND SHARP EDGES

**NOTICE TO PERSONS RECEIVING THIS DRAWING**

THE TECHNICAL MATERIEL CORPORATION claims proprietary right in the material disclosed herein. This drawing is issued in confidence for engineering information only and may not be reproduced or used to manufacture anything shown herein without permission from THE TECHNICAL MATERIEL CORPORATION to the user. This drawing is loaned for mutual assistance and is subject to recall at any time.

Property of:  
 THE TECHNICAL MATERIEL CORPORATION  
 MAMARONECK, NEW YORK

HOLES  
 A - 1/4 (.250) DIA. REQ'D 4  
 B - 5/16 SLOTS (SEE DETAIL) 2



PERFORATED AREA  
 PERFORATIONS .072 HOLES ON 1/8 CENTERS

METAL STAMP TMC PART NO.  
 1/8 HIGH, GOTHIC.

MS-1860-D

D-1	BLANK SIZE REF: MS-115-3, DELETED	4-25-63	8912	YM			
C-1	BOTTOM LIP CLARIFIED	7-21-62	7373	CS			
B-1	LIP REVISED	7-24-62	3108	CS			
A-3	DIMENSIONS REVISED	8					
A-2	LIP REVISED	16	60	CS			
A-1	"B" SLOT WAS 1/4 X 3/8						
ISSUE	ITEM	CHANGED FROM	DATE	CN. NO.	DRAFTS	CHECKER	ENG. APP.
TOLERANCES		SCALE:					
ALL	DEC. DIM. ±	DRILL PUNCH COMMERCIAL STOCK					
OTHERS	FRAC. DIM. ±	SIZES AND MANUFACTURERS					
	ANGULAR DIM. ±	TOLERANCES ARE NOT INCLUDED.					

REQ. ITEM	PART NO.	DESCRIPTION	SYMBOL
	.051	THE TECHNICAL MATERIEL CORP. MAMARONECK, NEW YORK	
	ALUMINUM	BOTTOM COVER	
	5052-H32		
	TYPE & TEMPER	D. MARCUSO	
	HEAT TREAT SPEC.	DRAWN	
	S-404 Yellow Iridite	ELEC. DES. APP.	
	FINISH & SPEC. NO.	CHECKED	
		FINAL APPROVAL	
		REF. MOUNTED	
			MS-1860 D

1	CPP-2	E-1047-1		9-3-59
REQ PER UNIT	MODEL	PROJECT NO.	ASBY. NO.	DATE
				USED ON

MS-1860 D