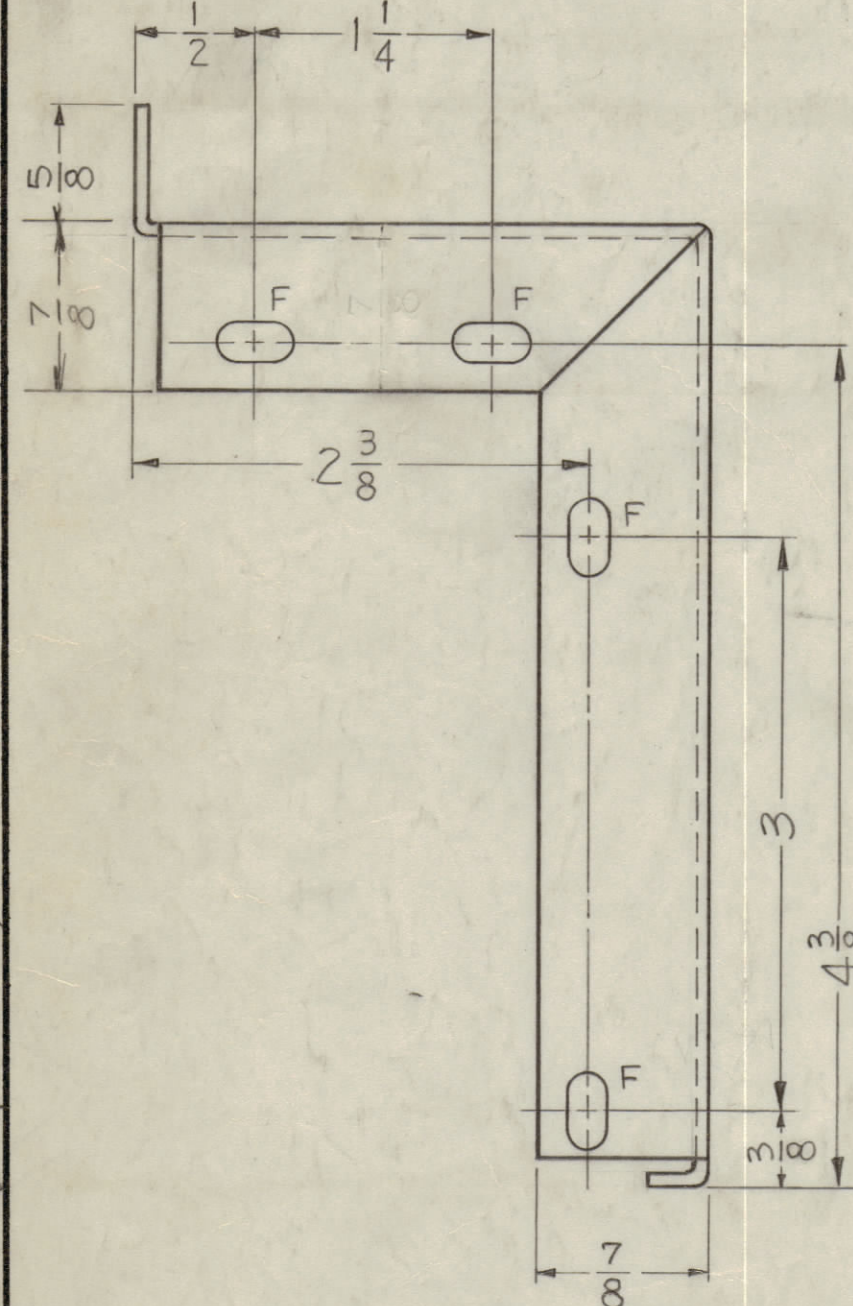
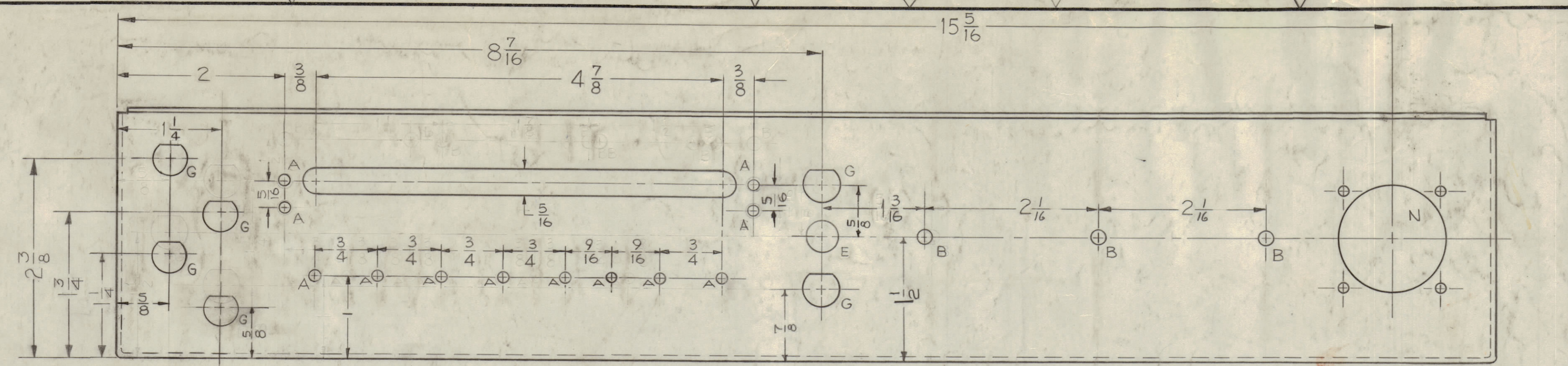
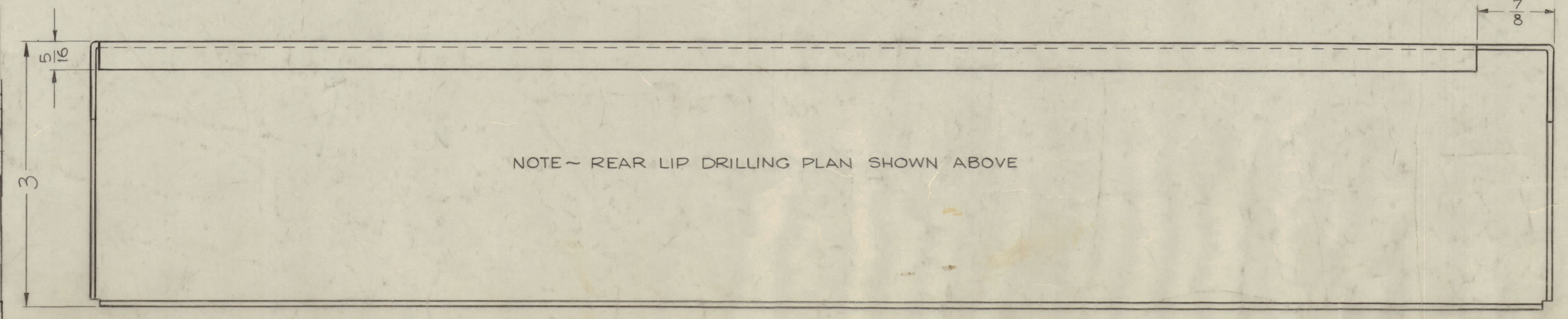
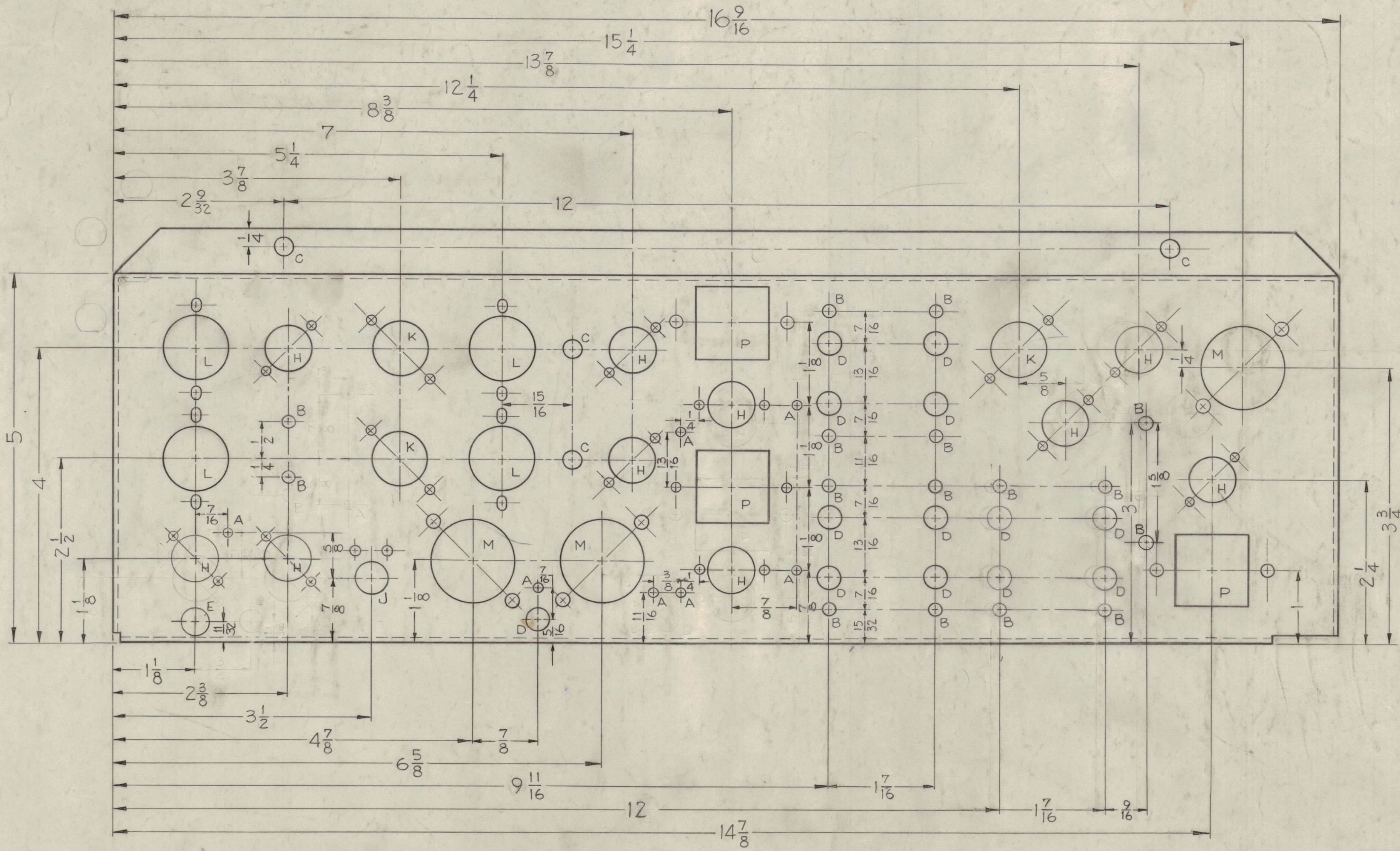


IF IT IS FOUND DESIRABLE TO CHANGE ANY TOLERANCE OR OTHER DETAIL SPECIFIED ON THIS DRAWING NOTIFY THE PURCHASER PROMPTLY.  
 MAXIMUM ALLOWABLE TOLERANCES HAVE BEEN DETERMINED AND DEVIATIONS WILL BE CAUSE FOR REJECTION.  
 REMOVE ALL BURRS AND SHARP EDGES

**NOTICE TO PERSONS RECEIVING THIS DRAWING**  
 THE TECHNICAL MATERIEL CORPORATION claims proprietary right in the material disclosed herein. This drawing is issued in confidence for engineering information only and may not be reproduced or used to manufacture anything shown herein without permission from THE TECHNICAL MATERIEL CORPORATION to the user. This drawing is loaned for mutual assistance and is subject to recall at any time.  
 Property of:  
 THE TECHNICAL MATERIEL CORPORATION  
 MAMARONECK, NEW YORK

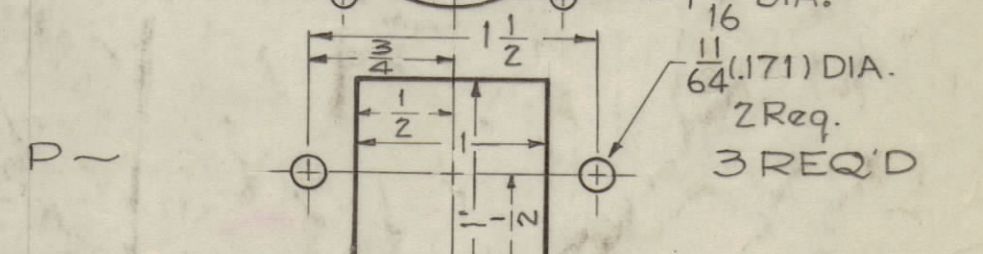
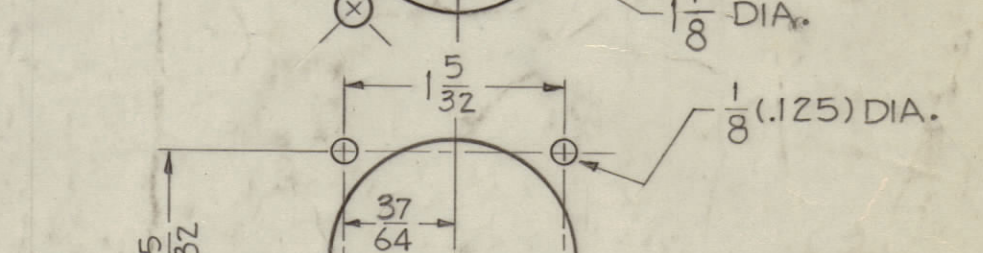
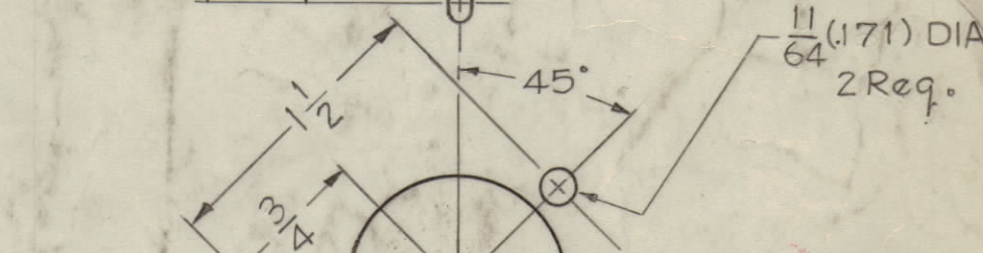
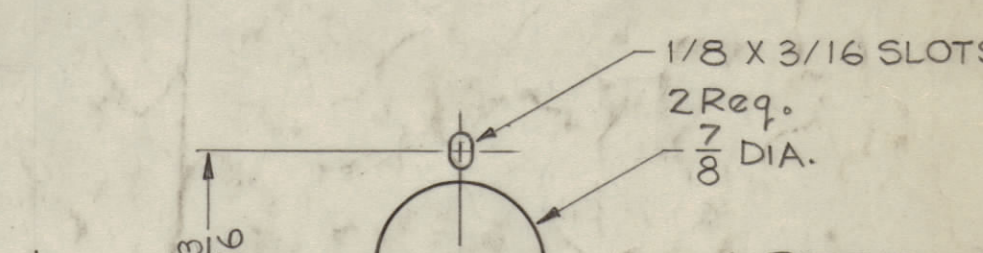
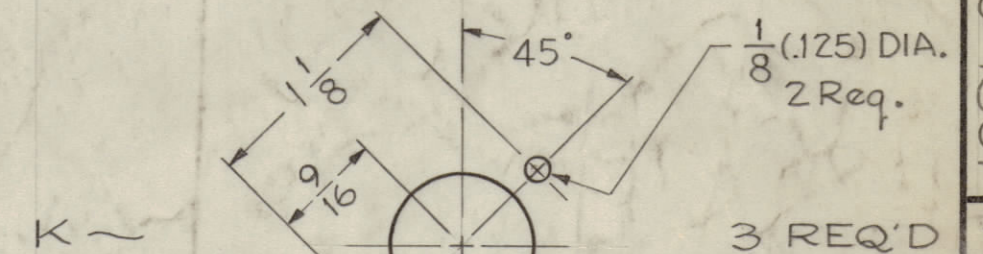
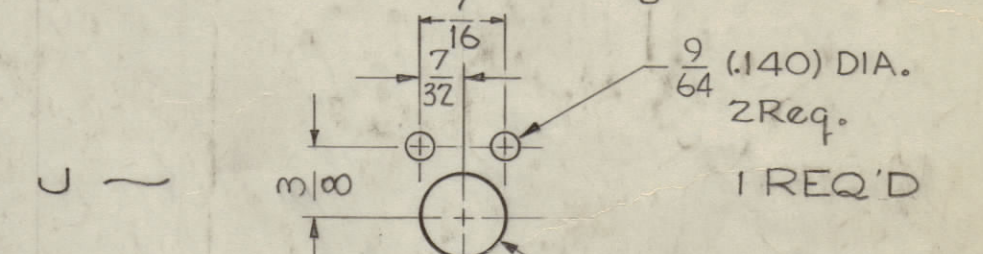
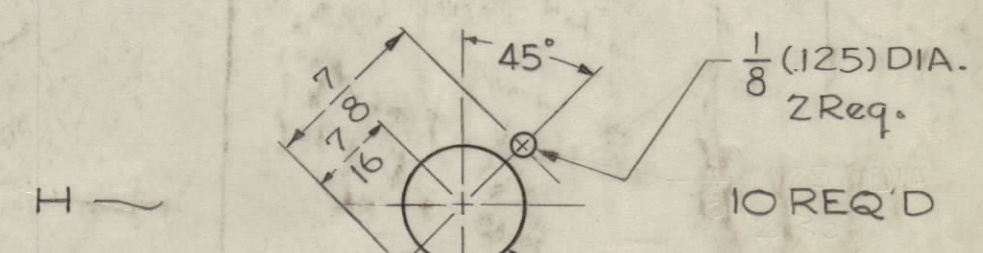
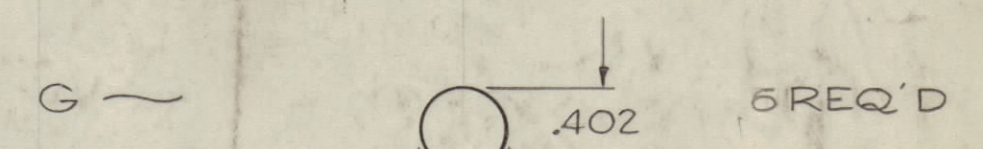


OPPOSITE SIDE SAME



NOTE - REAR LIP DRILLING PLAN SHOWN ABOVE

- A - 1/8 (.125) DIA. 19 Req.
- B - 11/64 (.171) DIA. 19 Req.
- C - 1/4 (.250) DIA. 4 Req.
- D - 5/16 (.312) DIA. 13 Req.
- E - 3/8 (.375) DIA. 2 Req.
- F - 13/64 X 13/32 SLOTS 8 Req.



F	1	2 "B" HOLES WERE "N" HOLES	11-25-64	12971	AS	
E	1	1 (A) HOLE ADDED (TOP VIEW)	5-2-62	6670	HH	
D	3	THREE "G" HOLES RELOCATED				
Z	1	(NONE) "G" HOLE ADDED	8-15-61	5-419	E. E.	RL
J	1	DIM 1-7/16 WAS 1 1/4 (CENTER TOP)				
C	1	THREE "B" HOLES RELOCATED	1-25-60	1794	J. F.	J. F.
B	7	(NONE) HOLE MOVED				
B	8	Added 2 1/16 DIM. MISC 2 "A" HOLES	10/28/59	495	AM	you
B	5	DIMENSIONS CHANGED: 1/4 WAS 1/2				
B	4	1/8 WAS 7/8 1/2 WAS 1 1/8				
B	3	DIMENSIONS CHANGED: 1/4 TO 1/8				
B	2	DELETED 4 "B" HOLES. NEW 17 REQ.				
B	1	MADE 4 "B" HOLES AND 4 "C" HOLES				
A	1	DELETED 2 "A" HOLES				
A	2	7/8 DIM WAS 1	9/24/59	1329	DM	
A	1	"N" Detail 3/4 DIA DIM (2) WAS 3/16				

ISSUE	ITEM	CHANGED FROM	DATE	CH. NO.	DRAFTS	CHECKER	ENG. APP.
TOLERANCES		SCALE: DO NOT SCALE					
ALL OTHERS	DEC. DIM. ±	DRILL, PUNCH, COMMERCIAL STOCK					
	FRACTIONAL DIM. ±	SIZES AND MANUFACTURERS					
	ANGULAR DIM. ±	TOLERANCES ARE NOT INCLUDED.					

REQ. ITEM	PART NO.	DESCRIPTION	SYMBOL
	.064	THE TECHNICAL MATERIEL CORP. MAMARONECK, NEW YORK	
STOCK SIZE		CHASSIS, AUDIO	
ALUMINUM			
MATERIAL		WEIGHT PER PC	
5052 - H32			
TYPE & TEMPER		John C. Biele	RWB
		DRAWN	RWB
		CHECKED	ELEC. DES. APP.
			MECH. DES. APP.
HEAT TREAT. SPEC.		FINAL APPROVAL	
S404-YELLOW IRIDITE		MS-1857 F	
FINISH & SPEC. NO.			

REF: LD-627

1	SBE-3	AX-205	9-2-59
REQ PER UNIT	MODEL	PROJECT NO.	DATE
		ASSY. NO.	
		USED ON	