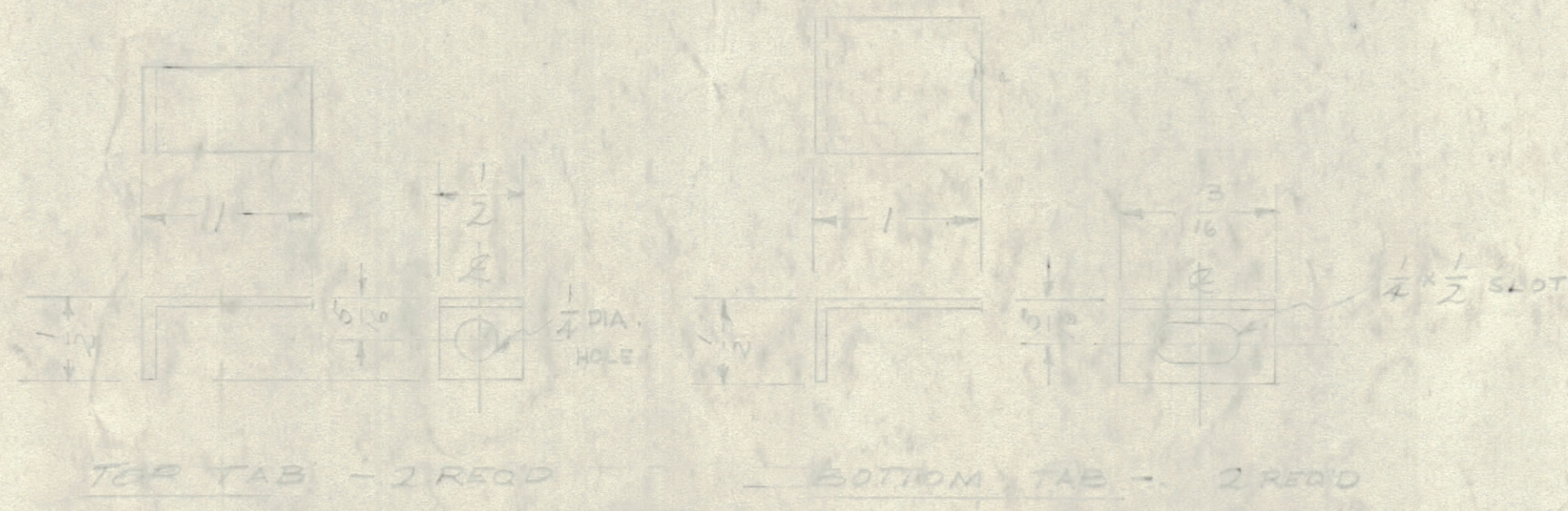
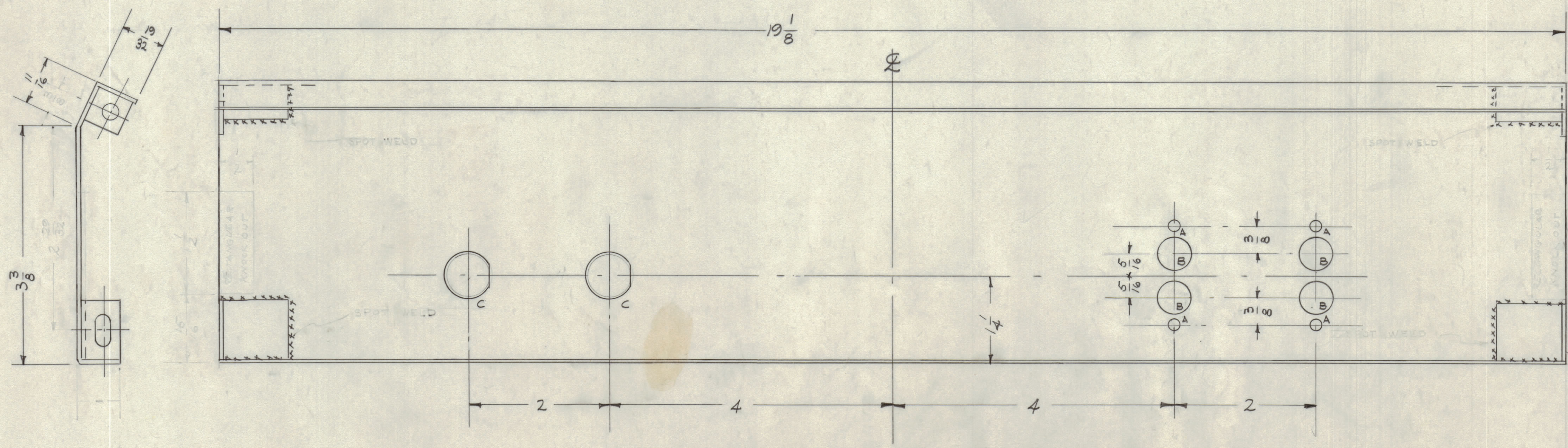
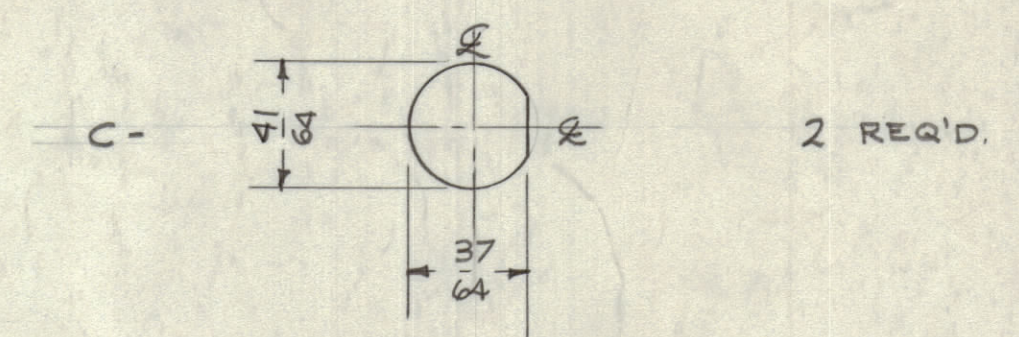


IF IT IS FOUND DESIRABLE TO CHANGE ANY TOLERANCE OR OTHER DETAIL SPECIFIED ON THIS DRAWING NOTIFY THE PURCHASER PROMPTLY.
 MAXIMUM ALLOWABLE TOLERANCES HAVE BEEN DETERMINED AND DEVIATIONS WILL BE CAUSE FOR REJECTION. REMOVE ALL BURRS AND SHARP EDGES



- A - 5/32 (.156) DIAM. 4 REQ'D.
- B - 15/32 (.468) DIAM. 4 "



FINISHING NOTES

- S404 - YELLOW IRIDITE
- S114 - ZINC CHROMATE PRIMER
- S220 - RCAF BLUE GRAY ENAMEL

NOTICE TO PERSONS RECEIVING THIS DRAWING
 THE TECHNICAL MATERIEL CORPORATION claims proprietary right in the material disclosed hereon. This drawing is issued in confidence for engineering information only and may not be reproduced or used to manufacture anything shown hereon without permission from THE TECHNICAL MATERIEL CORPORATION to the user. This drawing is loaned for mutual assistance and is subject to recall at any time.
 Property of:
 THE TECHNICAL MATERIEL CORPORATION
 MAMARONECK, NEW YORK

MS-2639 (BLANK)
 REF. LD-500 ENGRAVING

1	5/32 FINISH W/ 5-115% STAINLESS	2/28/59	5398	204	MM		
2	BLANK R.F. WAS MS-1739						
3	MODEL WAS RAK-7						
4	RECTANGULAR ENCRUSTS DELETED						
ISSUE	ITEM	CHANGED FROM	DATE	CN. NO.	DRAFTS	CHECKER	ENG. APP.
TOLERANCES		SCALE: 1/4" = 1"					
ALL OTHERS		DRILL PUNCH COMMERCIAL STOCK SIZES AND MANUFACTURERS TOLERANCES ARE NOT INCLUDED.					

1	TRAK-7A			8-3-59
REQ PER UNIT	MODEL	PROJECT NO.	ASSY. NO.	DATE
				USED ON

REQ. ITEM	PART NO.	DESCRIPTION	SYMBOL
1/16 GA.		THE TECHNICAL MATERIEL CORP. MAMARONECK, NEW YORK	
STEEL		PANEL, FRONT, CENTER	
MATERIAL	WEIGHT PER FC.		
MILD			
TYPE & TEMPER			
HEAT TREAT SPEC.			
SEE NOTE			
FINISH & SPEC. NO.			

MS-1835 A