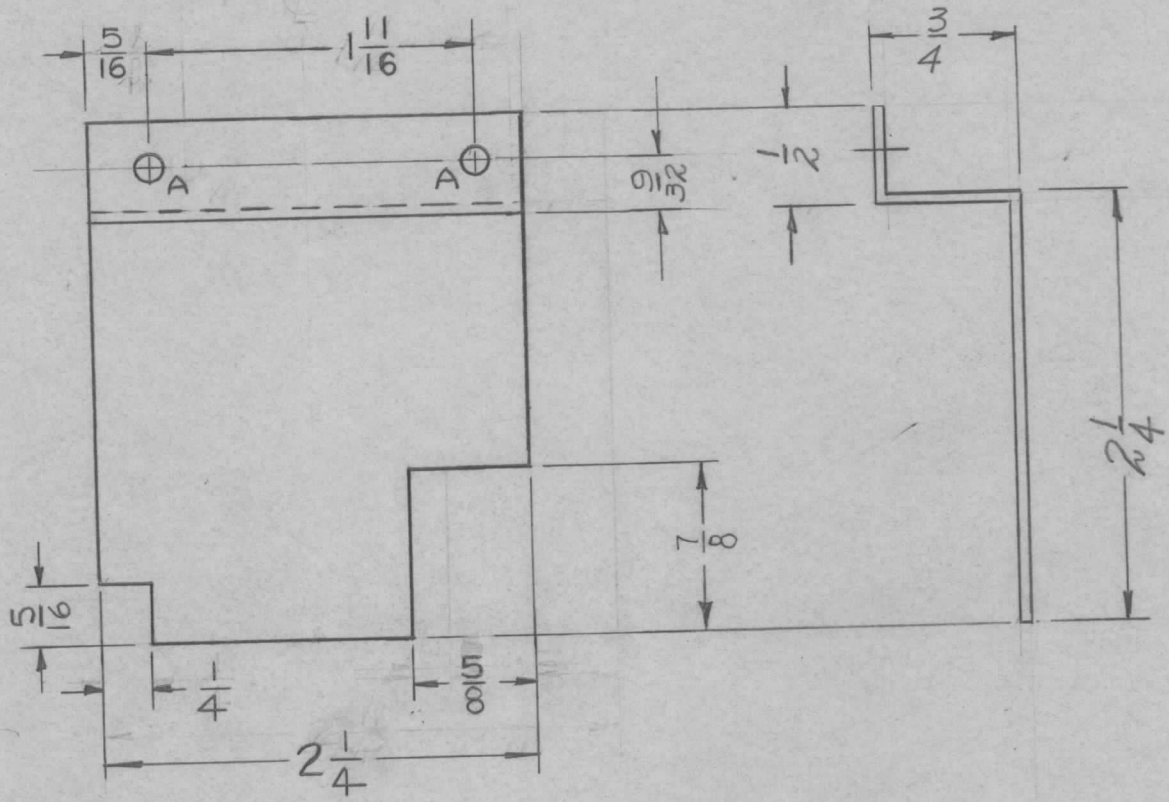


| REQ. PER. UNIT | USED ON | | |
|----------------|---------|------------|----------|
| | MODEL | ASS'Y. NO. | DATE |
| 1 | SBE-2 | | |
| 1 | SBE-3 | A0-101 | 11-30-59 |

MS-1834 B

A- #25 DR. (.149) 2 REQ.



| ISSUE | | CHANGED FROM | DATE | CH. NO. | DRAFTS | CHECKER | ENG. APP. | REQ. ITEM | PART NO. | DESCRIPTION | SYMBOL | | | | |
|--|---|------------------------|--|---------|--------|---------|-----------|--------------------|--------------|--|--|----------------|--|----------------|--|
| B | 3 | 1/4 x 5/16 NOTCH ADDED | 9/14/60 | 2944C | cy | jro | jro | .051 | 5052-H32 | THE TECHNICAL MATERIEL CORP. MAMARONECK, NEW YORK | SHIELD, R.F. OUTPUT CONTROL POTENTIOMETER | | | | |
| | 2 | 2 1/4 DIM. WAS 2 1/2 | | | | | | | | | | | | | |
| | 1 | 5/8 DIM. WAS 7/8 DIM. | | | | | | | | | | | | | |
| A | 3 | 2 1/2 WAS 2 1/16 | 1-20-60 | 1794 | 9/14 | jro | amb | ALUMINUM | 5404-IRIDITE | DRAWN | CHECKED | FINAL APPROVAL | | | |
| | 2 | 7/8 x 7/8 CUTOUT ADDED | | | | | | | | | | | | | |
| | 1 | "A" HOLES RELOCATED | | | | | | | | | | | | | |
| TOLERANCES | | | SCALE: | | | | | TYPE & TEMPER | | HEAT TREAT. SPEC. | | ELEC. DES. APP | | MECH. DES. APP | |
| DEC. DIM. ± FRAC. DIM. ± 1/64 ANGULAR DIM. ± | | | MAXIMUM ALLOWABLE TOLERANCES HAVE BEEN DETERMINED AND ANY DEVIATIONS WILL BE CAUSE FOR REJECTION. REMOVE ALL BURRS AND SHARP EDGES | | | | | FINISH & SPEC. NO. | | | | MS-1834 | | B | |