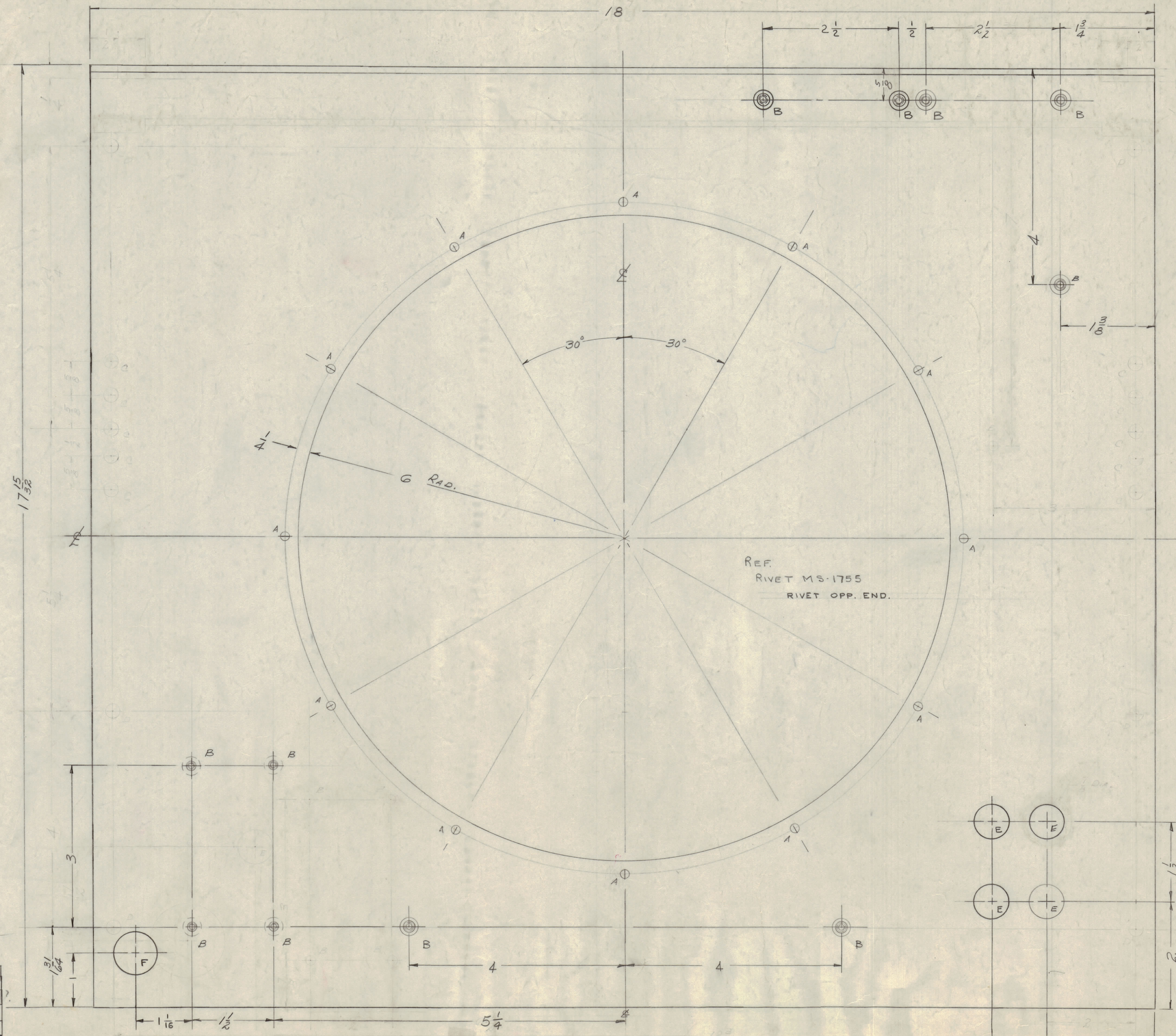
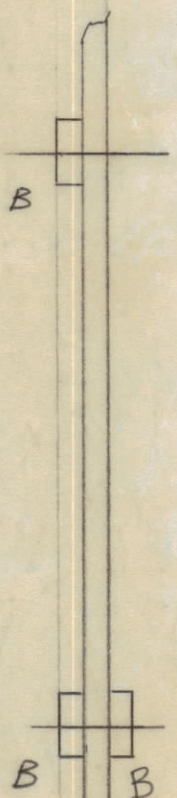
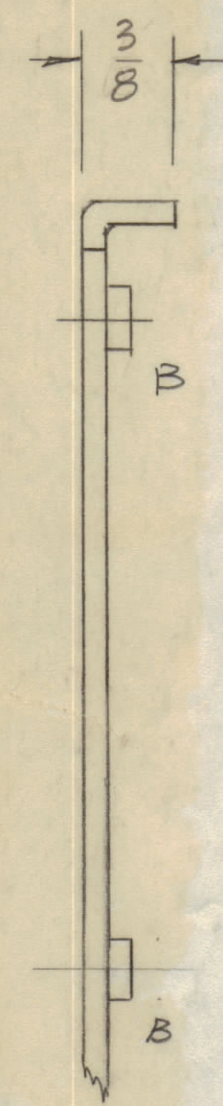


IF IT IS FOUND DESIRABLE TO CHANGE ANY TOLERANCE OR OTHER DETAIL SPECIFIED ON THIS DRAWING NOTIFY THE PURCHASER PROMPTLY.
 MAXIMUM ALLOWABLE TOLERANCES HAVE BEEN DETERMINED AND DEVIATIONS WILL BE CAUSE FOR REJECTION. REMOVE ALL BURRS AND SHARP EDGES



HOLE LEGEND

A - RIVET HOLE PER REQY (30° AMPT)	12 REQ.
(FOR MS-1755)	
B - .191-.194 DIA. FOR NT129-632-4	11 REQ.
C - DELETED	
D - DELETED	
E - 5/8 (.625) DIA.	4 REQ.
F - 13/16 (.812) DIA	1 REQ.

REF.
RIVET MS-1755
RIVET OPP. END.

INSIDE RADIUS - METAL THICKNESS

NOTICE TO PERSONS RECEIVING THIS DRAWING
 THE TECHNICAL MATERIEL CORPORATION claims proprietary right in the material disclosed herein. This drawing is issued in confidence for engineering information only and may not be reproduced or used to manufacture anything shown hereon without permission from THE TECHNICAL MATERIEL CORPORATION to the user. This drawing is loaned for mutual assistance and is subject to recall at any time.

Property of:
 THE TECHNICAL MATERIEL CORPORATION
 MAMARONECK, NEW YORK

E 1	2" B x 2" E HOLES ADDED	1.6.45	13227	AB	
D 1	1" F HOLE ADD., 5/8 WAS 6/16	8.24.04	12212	AB	
C 2	18 WAS 18 7/8 Choke (A, D) Deleted; D hole deleted	9/16/60	2513	DM	
B	GENERAL REV.	8-31-59	1285		
A	ADDED (C) B HOLES	7/1/59			
ISSUE ITEM	CHANGED FROM	DATE	CH. NO.	DRAFTER	CHECKER
TOLERANCES		SCALE: 2/3			
ALL OTHERS	DEC. DIM. ± 1/64 FRAC. DIM. ± 1/64 ANGULAR DIM. ± .5°	DRILL PUNCH, COMMERCIAL STOCK SIZES AND MANUFACTURERS TOLERANCES ARE NOT INCLUDED.			

REQ. PER UNIT	1	MODEL	GPT-10K	PROJECT NO.	AX-181	ASSY. NO.		DATE	7-1-59
USED ON									
HEAT TREAT. SPEC.		S-404-1R1DITE		CHECKED		FINAL APPROVAL			
FINISH & SPEC. NO.				DRAWN		MS-1833 E			

MS-1833 E