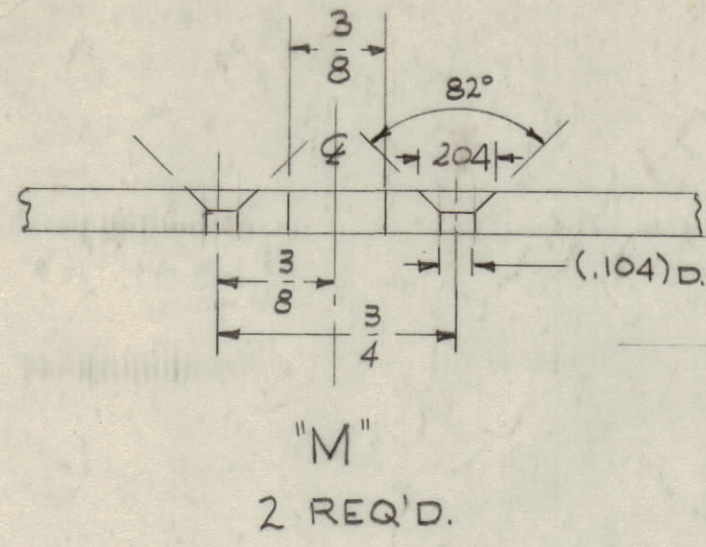


IF IT IS FOUND DESIRABLE TO CHANGE ANY TOLERANCE OR OTHER DETAIL SPECIFIED ON THIS DRAWING NOTIFY THE PURCHASER PROMPTLY.
 MAXIMUM ALLOWABLE TOLERANCES HAVE BEEN DETERMINED AND DEVIATIONS WILL BE CAUSE FOR REJECTION.
 REMOVE ALL BURRS AND SHARP EDGES

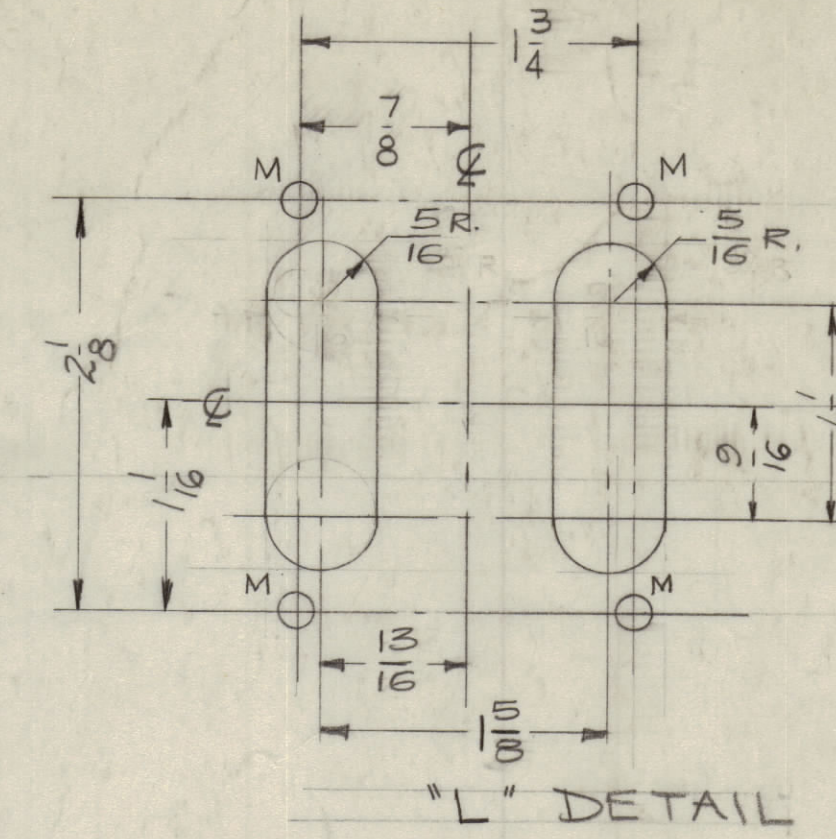


HOLES

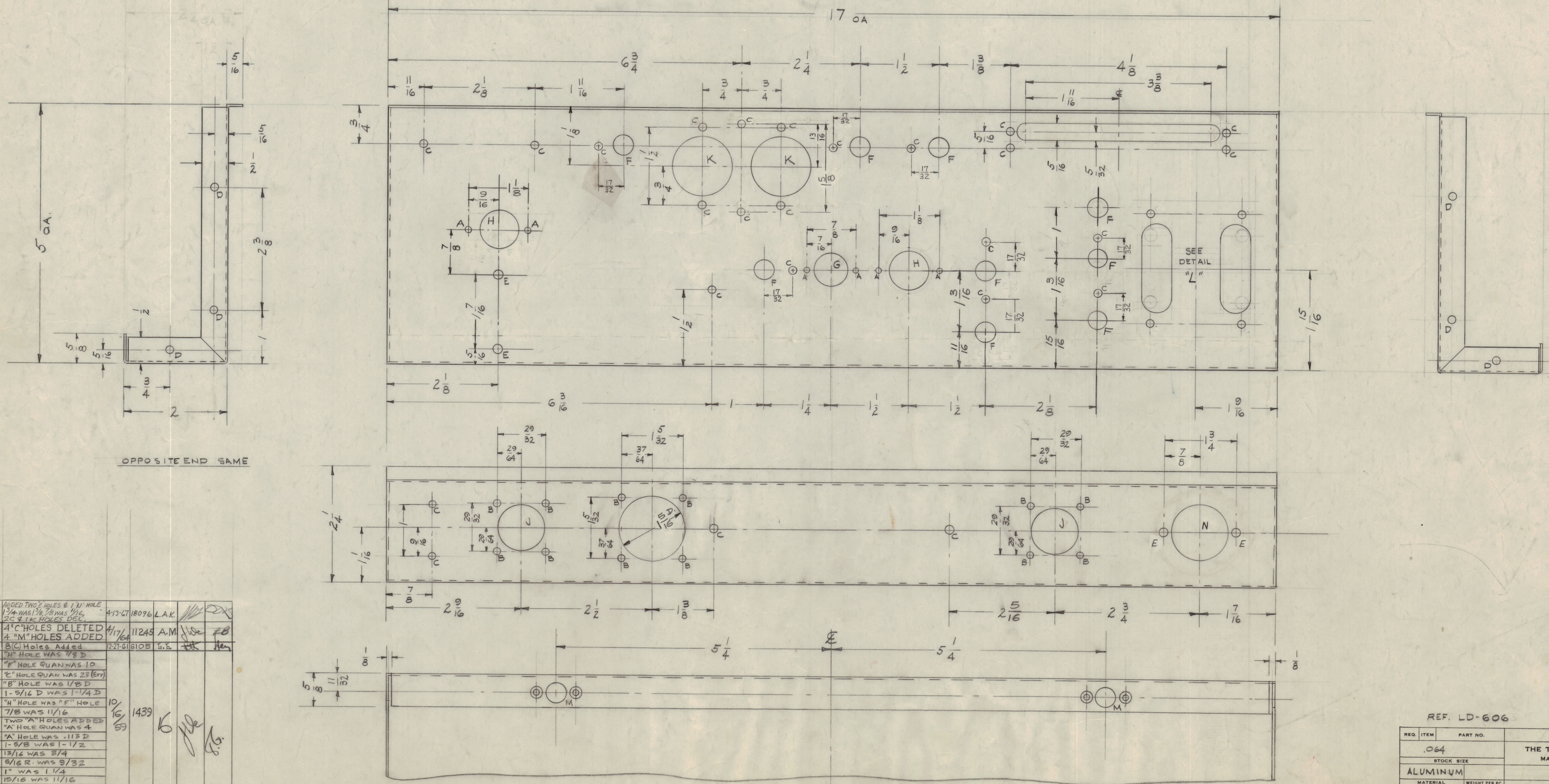
- A 1/8 (.125) DIAM.
- B 5/32 (.156) DIAM.
- C 3/64 (.140) DIAM.
- D 13/64 (.203) DIAM.
- E 1/64 (.171) DIAM.
- F 3/8 (.375) DIAM.
- G 5/8 (.625) DIAM.
- H 3/4 (.750) DIAM.
- J 15/16 (.937) DIAM.
- K-1/8 (1.125) DIAM.
- M-3/16 (.187) DIA.
- N-1/4 (1.250) DIAM.

REQ'D.

- 6
- 12
- 23
- 6
- 4
- 9
- 1
- 2
- 2
- 4



NOTICE TO PERSONS RECEIVING THIS DRAWING
 THE TECHNICAL MATERIEL CORPORATION claims proprietary right in the material disclosed herein. This drawing is issued in confidence for engineering information only and may not be reproduced or used to manufacture any part shown hereon without permission from THE TECHNICAL MATERIEL CORPORATION to the effect that this drawing is loaned for mutual assistance and is subject to recall at any time.
 Property of:
 THE TECHNICAL MATERIEL CORPORATION
 MAMARONECK, NEW YORK



D	ADDED TWO 'E' HOLES & 'N' HOLE. 134 WAS 1/8 DIA WAS 1/16. 25 & 1K HOLES DEL.	4/13-47	18096	L.A.K.			
C	4 'C' HOLES DELETED. 4 'M' HOLES ADDED.	4/17/64	11245	A.M.			
B	1 'B' C HOLES ADDED.	12-27-61	6105	E.S.			
A	15 'H' HOLE WAS 7/8 D 14 'E' HOLE QUAN WAS 10 13 'E' HOLE QUAN WAS 23 (ERR) 12 'B' HOLE WAS 1/8 D 11 1-3/16 D WAS 1-1/4 D 10 'H' HOLE WAS 'E' HOLE 9 7/8 WAS 11/16 8 TWO 'A' HOLES ADDED 'A' HOLE QUAN WAS 4 7 'A' HOLE WAS .113 D 6 1-5/8 WAS 1-1/2 5 13/16 WAS 3/4 4 5/16 R. WAS 3/32 3 1" WAS 1 1/4 2 15/16 WAS 11/16 1 2 3/16 WAS 2	10/59	1439				
ISSUE	ITEM	CHANGED FROM	DATE	CN. NO.	DRAFTS	CHECKER	ENG. APP.
TOLERANCES		SCALE:					
ALL DEC. DIM. ±		DRILL, PUNCH, COMMERCIAL STOCK					
OTHER FRAC. DIM. ±		SIZES AND MANUFACTURERS					
ANGULAR DIM. ±		TOLERANCES ARE NOT INCLUDED.					

1	HCU-2	ATS-50(70)	4-24-59
REQ PER UNIT	MODEL	PROJECT NO.	DATE
USED ON			

REF. LD-606		STAMPING	
REQ. ITEM	PART NO.	DESCRIPTION	SYMBOL
.064		THE TECHNICAL MATERIEL CORP.	
STOCK SIZE		MAMARONECK, NEW YORK	
MATERIAL		ALUMINUM	
WEIGHT PER PC.		5052-H32	
TYPE & TEMPER		MCU-2	
DRAWN		ELUC. DES. APP.	MECH. DES. APP.
CHECKED		FINAL APPROVAL	
FINISH & SPEC. NO.		5404 IRIDITE	
		MS-1803	D