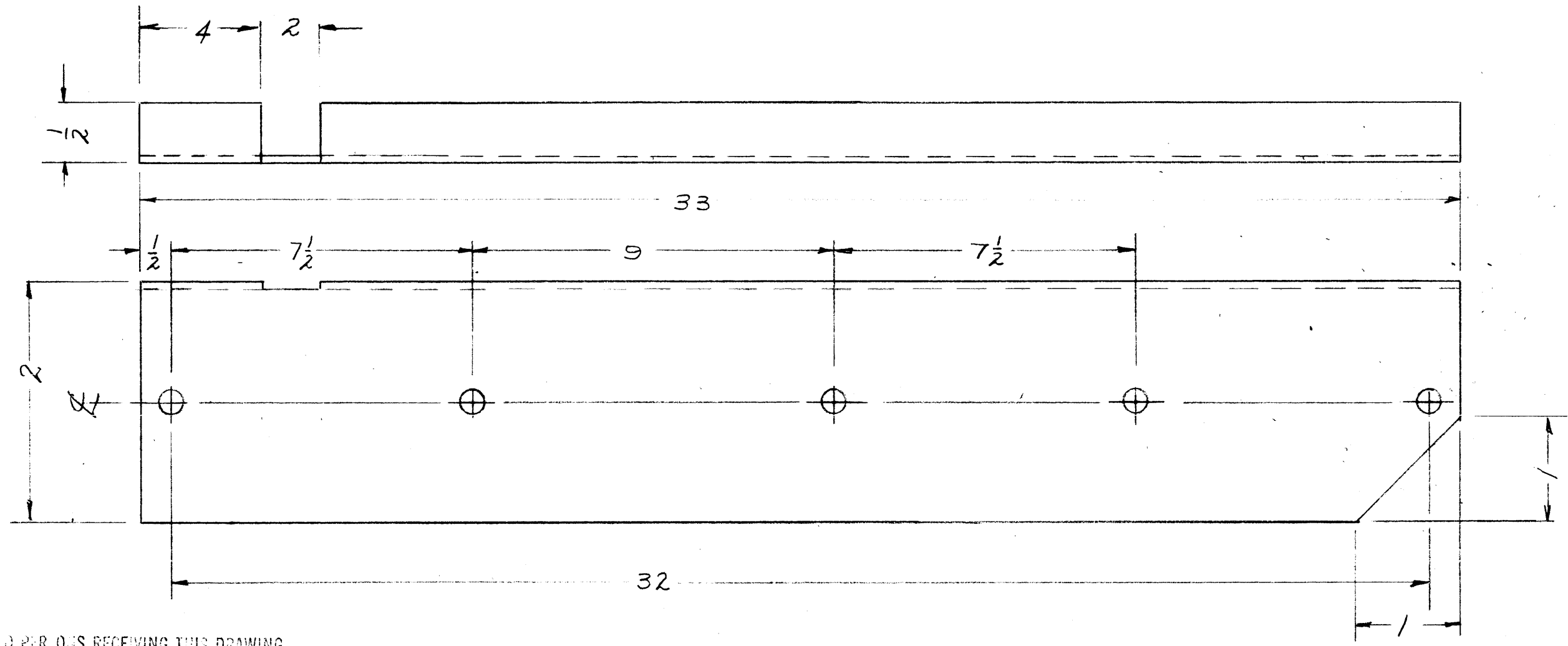


MS-1703 B

ALL HOLES $\frac{13}{64}$ (.203) DIA.



NOTICE TO PERSONS RECEIVING THIS DRAWING

THE TECHNICAL MATERIEL CORPORATION claims proprietary right in the material disclosed hereon. This drawing is issued in confidence for engineering information only and may not be reproduced or used to manufacture anything shown hereon without permission from THE TECHNICAL MATERIEL CORPORATION to the user. This drawing is loaned for mutual assistance and is subject to recall at any time.

Property of:
THE TECHNICAL MATERIEL CORPORATION
 MAMARONECK, NEW YORK

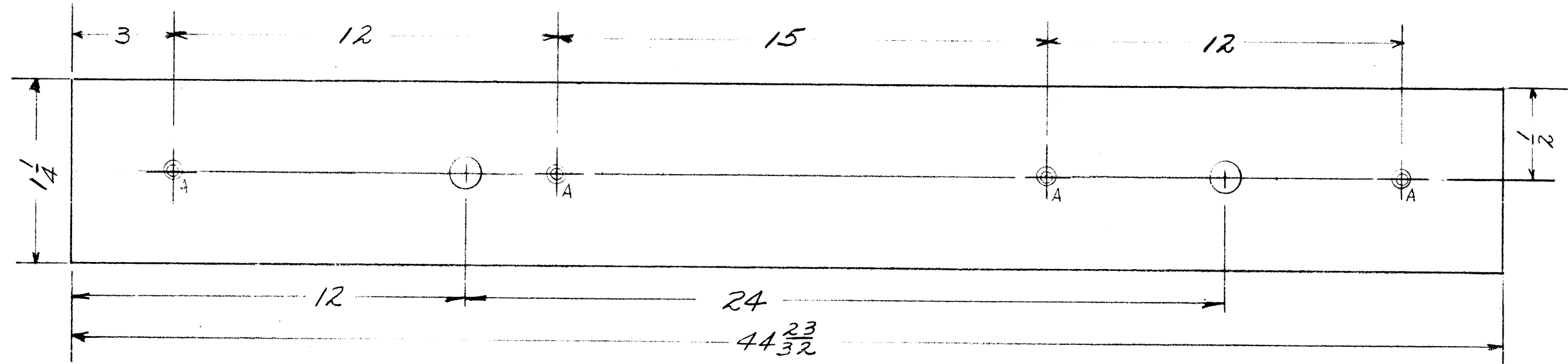
ISSUE	ITEM	CHANGED FROM	DATE	CH. NO.	DRAFTS	CHECKER	ENG. APP.
B	1	S-404 WAS S-101	12/15/59	1001	AR		EMN
A	1	DIAGONAL CUTOUT ADDED	4/7/59	—	ACC	file	
TOLERANCES		SCALE: <i>1/64</i>					
DEC. DIM. \pm		MAXIMUM ALLOWABLE TOLERANCES HAVE BEEN DETERMINED AND ANY DEVIATIONS WILL BE CAUSE FOR REJECTION.					
FRAC. DIM. \pm		REMOVE ALL BURRS AND SHARP EDGES					
ANGULAR DIM. \pm							

REQ. PER UNIT	MODEL	PROJECT NO.	ASS'Y. NO.	DATE
1	GPT-10KN	MAIN FR.		3-31-59
USED ON				

REQ. ITEM	PART NO.	DESCRIPTION	SYMBOL
	.081	THE TECHNICAL MATERIEL CORP. MAMARONECK, NEW YORK	
	STOCK SIZE		
	ALUMINUM	SUPPORT, MAIN CABLE	
	MATERIAL:		
	5052-H32		
	TYPE & TEMPER	HEAT TREAT. SPEC.	FINAL APPROVAL
	5404 YELLOW IRIDITE		
	5114 & 5115		
	FINISH & SPEC. NO.	ELEC. DES. APP.	MECH. DES. APP.
			MS-1703 B

MS-1704

A. C'SHIRT FOR S-32 CH.S 4 REC.
 B. 1/2 (.500) DIA 2 REC.



NOTICE TO PERSONS RECEIVING THIS DRAWING

THE TECHNICAL MATERIEL CORPORATION claims proprietary right in the material disclosed hereon. This drawing is issued in confidence for engineering information only and may not be reproduced or used to manufacture anything shown hereon without permission from THE TECHNICAL MATERIEL CORPORATION to the user. This drawing is loaned for mutual assistance and is subject to recall at any time.

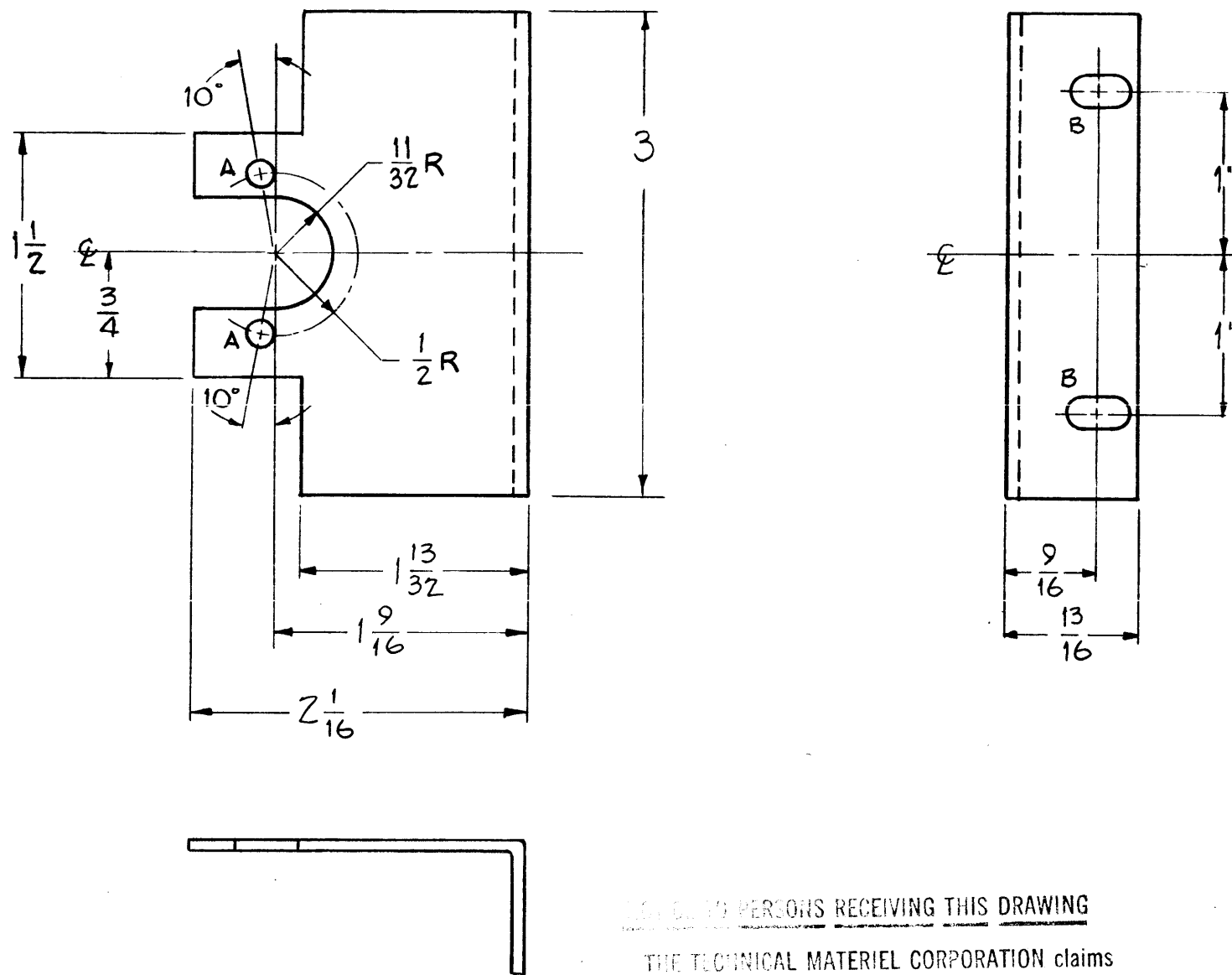
Property of:
 THE TECHNICAL MATERIEL CORPORATION
 MAMARONECK, NEW YORK

ISSUE	ITEM	CHANGED FROM	DATE	CH. NO.	DRAFTS	CHECKER	ENG. APP.
TOLERANCES			SCALE: <i>CSO</i>				
DEC. DIM. ±			MAXIMUM ALLOWABLE TOLERANCES HAVE BEEN DETERMINED AND ANY DEVIATIONS WILL BE CAUSE FOR REJECTION. REMOVE ALL BURRS AND SHARP EDGES				
FRAC. DIM. ± <i>1/64</i>							
ANGULAR DIM. ±							

REQ. PER UNIT	MODEL	PROJECT NO.	ASS'Y. NO.	DATE
1	GPT-10KW	AUX. FR.		3-31-59
USED ON				

REQ. ITEM	PART NO.	DESCRIPTION	SYMBOL
	.064	THE TECHNICAL MATERIEL CORP. MAMARONECK, NEW YORK	
	STOCK SIZE	SPACER, FRAME	
	ALUMINUM	AUX. FRAME, LEFT SIDE	
	MATERIAL		
	5052-H32		
	TYPE & TEMPER	HEAT TREAT. SPEC.	
	5404 - IRIDITE		
	FINISH & SPEC. NO.	ELEC. DES. APP.	MECH. DES. APP.
			MS-1704

MS-1717A



A ~ 11/64 (.171) DIA. 2 REQ.
 B ~ 13/64 x 13/32 SLOTS 2 REQ.

NOTED TO PERSONS RECEIVING THIS DRAWING

THE TECHNICAL MATERIEL CORPORATION claims proprietary right in the material disclosed hereon. This drawing is issued in confidence for engineering information only and may not be reproduced or used to manufacture anything shown hereon without permission from THE TECHNICAL MATERIEL CORPORATION to the user. This drawing is loaned for mutual assistance and is subject to recall at any time.

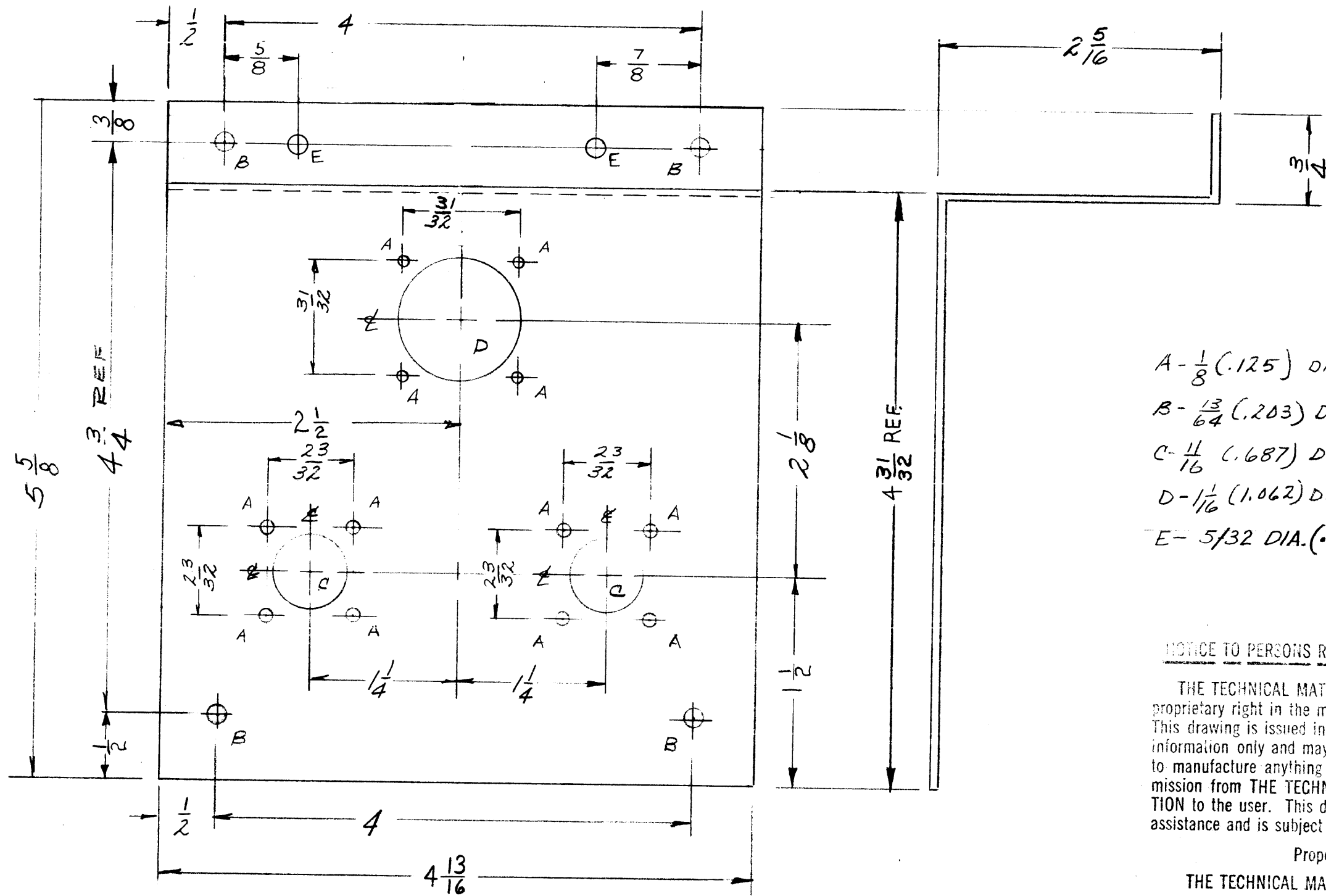
Property of:
 THE TECHNICAL MATERIEL CORPORATION
 MAMARONECK, NEW YORK

A	1	S-404 WAS S-101	12/15/59	1001	#6			EMN
ISSUE	ITEM	CHANGED FROM	DATE	CH. NO.	DRAFTS	CHECKER		ENG. APP.
TOLERANCES			SCALE: FULL					
DEC. DIM. ±			MAXIMUM ALLOWABLE TOLERANCES HAVE BEEN DETERMINED AND ANY DEVIATIONS WILL BE CAUSE FOR REJECTION.					
FRAC. DIM. ± 1/64			REMOVE ALL BURRS AND SHARP EDGES					
ANGULAR DIM. ±								

1	RTP-2	POW-AMP	CB-140	4-17-59
REQ. PER UNIT	MODEL	PROJECT NO.	ASS'Y. NO.	DATE
USED ON				

REQ. ITEM	PART NO.	DESCRIPTION		SYMBOL
	.064	THE TECHNICAL MATERIEL CORP.		
	STOCK SIZE	MAMARONECK, NEW YORK		
	ALUMINUM	BRACKET, CAPACITOR		
	MATERIAL			
5052-H-32		J.C BIELE	16 4/17/59	
TYPE & TEMPER	HEAT TREAT. SPEC.	DRAWN	CHECKED	FINAL APPROVAL
S-404 YELLOW TRIDITE				MS-1717A
FINISH & SPEC. NO.		ELEC. DES. APP.	ME H. DES. APP.	

MS-1720 E



- A - $\frac{1}{8}$ (.125) DIA. HOLE 12 REQ.
- B - $\frac{13}{64}$ (.203) DIA. HOLE 4 REQ.
- C - $\frac{11}{16}$ (.687) DIA. HOLE 2 REQ.
- D - $1\frac{1}{16}$ (1.062) DIA. HOLE 1 REQ.
- E - $\frac{5}{32}$ DIA. (.156) 2 REQ.

NOTICE TO PERSONS RECEIVING THIS DRAWING

THE TECHNICAL MATERIEL CORPORATION claims proprietary right in the material disclosed hereon. This drawing is issued in confidence for engineering information only and may not be reproduced or used to manufacture anything shown hereon without permission from THE TECHNICAL MATERIEL CORPORATION to the user. This drawing is loaned for mutual assistance and is subject to recall at any time.

Property of:
THE TECHNICAL MATERIEL CORPORATION
MAMARONECK, NEW YORK

ISSUE	ITEM	CHANGED FROM	DATE	CH. NO.	DRAFTS	CHECKER	ENG. APP.
E		4 3/32 WAS 4 15/16	5-3-72	20672	EP	EP	1 EP
D	1	2 (E) HOLES ADDED	2-21-62	6408	G.S.	EP	1 EP
C	3	O/A LENGTH 4 13/16 WAS 5"	10-13-60	3188	[Signature]	[Signature]	[Signature]
	2	3/8 DIM. ADDED					
B	1	11/32 DIM. DELETED	11/14/60	1756	[Signature]	[Signature]	[Signature]
	2	5/8 REF. WAS 5/32					
A	1	1/8 DIM. DELETED, 1/2 + 45/16 ADDED	12/15/59	1001	AB	AB	EMN

TOLERANCES		SCALE:
DEC. DIM. ±		CP
FRAC. DIM. ±	1/64	
ANGULAR DIM. ±		

MAXIMUM ALLOWABLE TOLERANCES HAVE BEEN DETERMINED AND ANY DEVIATIONS WILL BE CAUSE FOR REJECTION. REMOVE ALL BURRS AND SHARP EDGES

REQ. PER UNIT	MODEL	PROJECT NO.	ASS'Y. NO.	DATE
1	RTS-2			4-16-59

REF. FMC # LD-532

REQ. ITEM	PART NO.	DESCRIPTION	SYMBOL
		.081 THICK STOCK SIZE	
		ALUMINUM	
		5052-H32	
		S-404 YELLOW IRIDITE	
		FINISH & SPEC. NO.	

THE TECHNICAL MATERIEL CORP.
MAMARONECK, NEW YORK

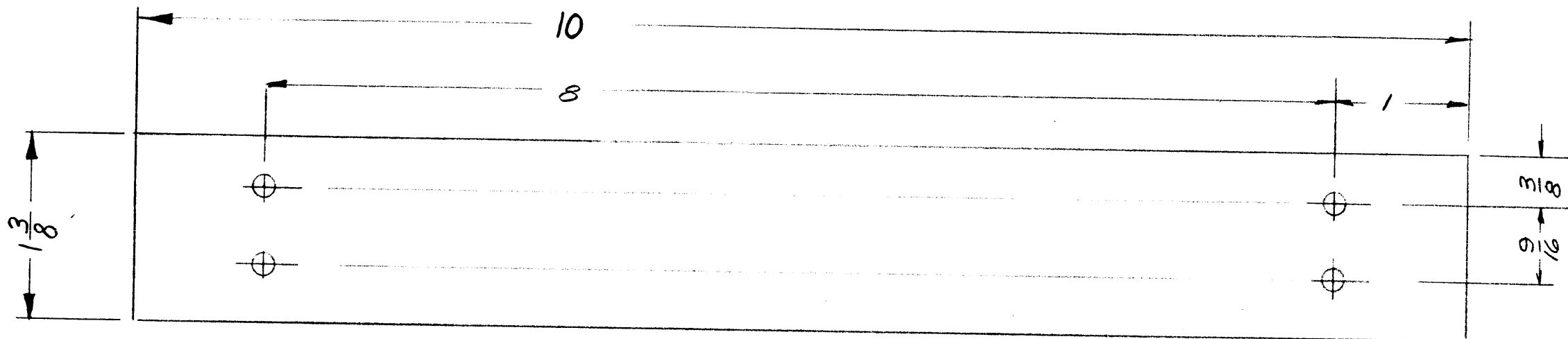
BRACKET, MOUNTING CONNECTOR

DRAWN: [Signature] CHECKED: [Signature] FINAL APPROVAL: [Signature]

MS-1720 E

MS-1721 B

ALL HOLES $\frac{13}{64}$ (.203) DIA.



NOTICE TO PERSONS RECEIVING THIS DRAWING

THE TECHNICAL MATERIEL CORPORATION claims proprietary right in the material disclosed hereon. This drawing is issued in confidence for engineering information only and may not be reproduced or used to manufacture anything shown hereon without permission from THE TECHNICAL MATERIEL CORPORATION to the user. This drawing is loaned for mutual assistance and is subject to recall at any time.

Property of:

THE TECHNICAL MATERIEL CORPORATION
MAMARONECK, NEW YORK

NOTE: USE ONLY WHEN SUPPLYING
A-1504 - 12 VOLT POWER SUPPLY.

ISSUE	ITEM	CHANGED FROM	DATE	CH. NO.	DRAFTS	CHECKER	ENG. APP.
B	2	O/A LENGTH 10" WAS 11 1/2"	10-13-60	3188	WCF	JHC	JHC
A	1	S-404 WAS S-101	12/15/59	1001	AB	JHC	EMN

TOLERANCES: DEC. DIM. \pm 1/64
FRAC. DIM. \pm 1/64
ANGULAR DIM. \pm

SCALE: C40

MAXIMUM ALLOWABLE TOLERANCES HAVE BEEN DETERMINED AND ANY DEVIATIONS WILL BE CAUSE FOR REJECTION. REMOVE ALL BURRS AND SHARP EDGES

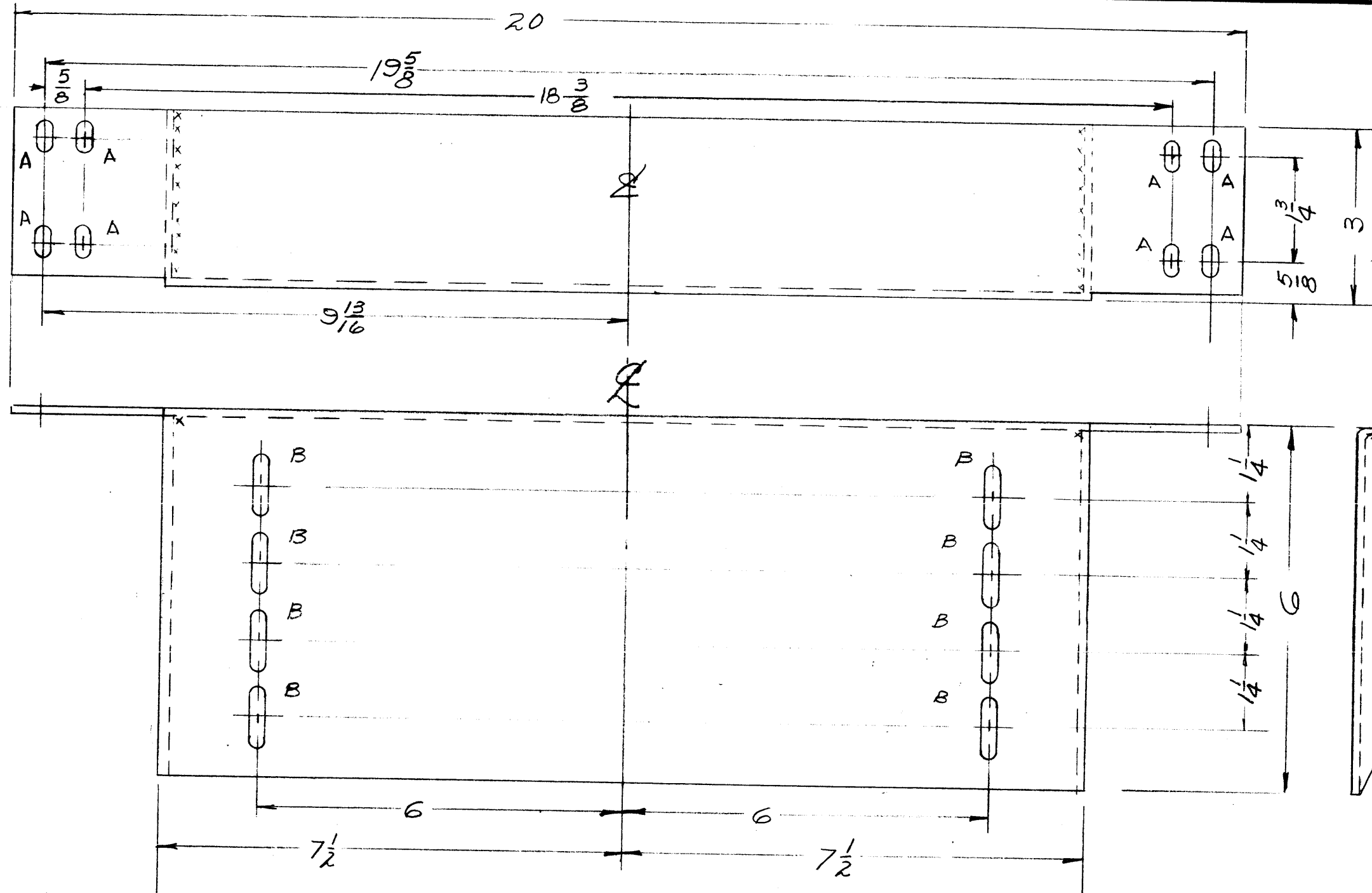
1	RTS-2			4-16-59
REQ. PER UNIT	MODEL	PROJECT NO.	ASS'Y. NO.	DATE
USED ON				

REQ. ITEM	PART NO.	DESCRIPTION	SYMBOL
	3/16 THICK STOCK SIZE	THE TECHNICAL MATERIEL CORP. MAMARONECK, NEW YORK	
	ALUMINUM	SPACER, CHASSIS	
	5052-H32	BATTERY SUPPLY	
	S-404 YELLOW IRIDITE		

TYPE & TEMPER: 5052-H32
HEAT TREAT. SPEC.:
DRAWN: [Signature]
CHECKED: [Signature]
FINAL APPROVAL: [Signature]

FINISH & SPEC. NO.:
ELEC. DES. APP.:
MECH. DES. APP.:
MS-1721 B

MS-1725 A



A - 13/64 X 5/8 SLOT 8 REQ.
 B - 13/64 X 1" SLOT 8 REQ.

NOT TO PERSONS RECEIVING THIS DRAWING

THE TECHNICAL MATERIEL CORPORATION claims proprietary right in the material disclosed hereon. This drawing is issued in confidence for engineering information only and may not be reproduced or used to manufacture anything shown hereon without permission from THE TECHNICAL MATERIEL CORPORATION to the user. This drawing is loaned for mutual assistance and is subject to recall at any time.

Property of:
 THE TECHNICAL MATERIEL CORPORATION
 MAMARONECK, NEW YORK

ISSUE	ITEM	CHANGED FROM	DATE	CH. NO.	DRAFTS	CHECKER	ENG. APP.
	A	4 "A" HOLES ADDED - DIM. 20 WAS 20 1/8 - CONFIG. SIDE VIEW MODIFIED. MAT. WAS STEEL FINISH WAS S101 CAUSTIC DIP.	3-3-66	15840	G.D.L.	[Signature]	[Signature]
TOLERANCES			SCALE: <i>1/16</i>				
DEC. DIM. ±			MAXIMUM ALLOWABLE TOLERANCES HAVE BEEN DETERMINED AND ANY DEVIATIONS WILL BE CAUSE FOR REJECTION. REMOVE ALL BURRS AND SHARP EDGES				
FRAC. DIM. ± 1/64							
ANGULAR DIM. ±							

3	RAK-B				
REQ. PER UNIT	MODEL	PROJECT NO.	ASS'Y. NO.	DATE	
				1-20-59	

REQ. ITEM	PART NO.	DESCRIPTION	SYMBOL
.081 THK.		THE TECHNICAL MATERIEL CORP.	
STOCK SIZE		MAMARONECK. NEW YORK	
ALUMINUM		SUPPORT, CHASSIS	
MATERIAL			
5052-H32			
TYPE & TEMPER	HEAT TREAT. SPEC.	DRAWN	CHECKED
5404 YEL. IRIDITE		[Signature]	[Signature]
FINISH & SPEC. NO.	ELEC. DES. APP.	MECH. DES. APP.	
			MS-1725 A

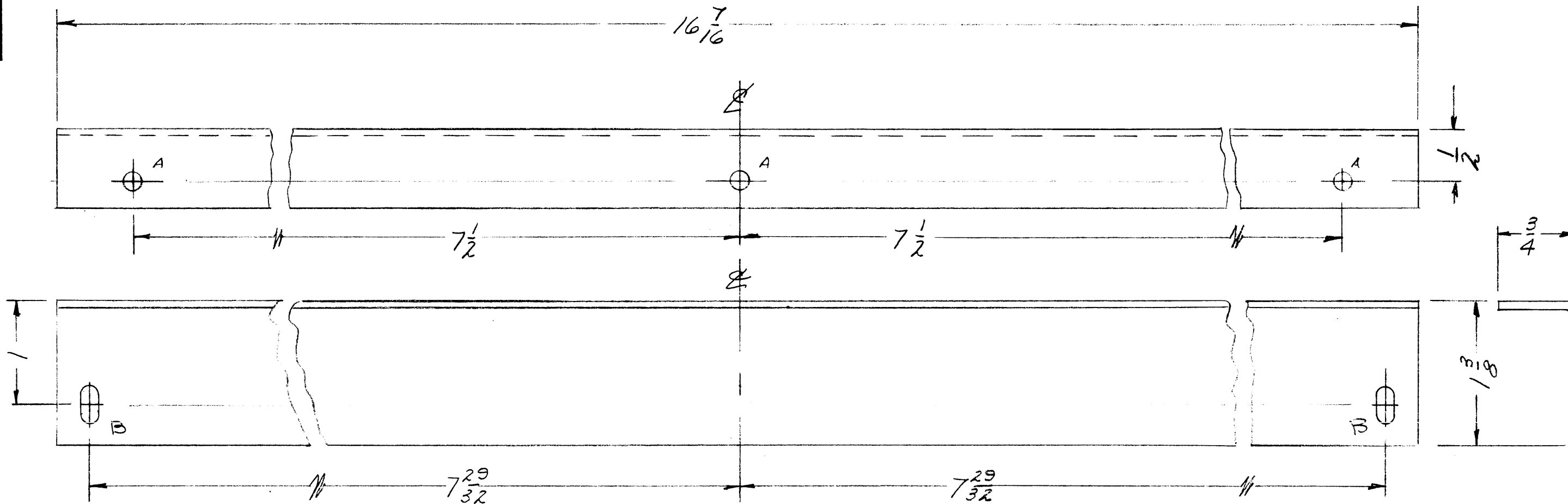
MS-1734
A

A - $\frac{11}{64}$ (.171) DIA HOLE

3 REQ.

B - SLOT $\frac{11}{64} \times \frac{11}{32}$

2 REQ.



NOTICE TO PERSONS RECEIVING THIS DRAWING

THE TECHNICAL MATERIEL CORPORATION claims proprietary right in the material disclosed hereon. This drawing is issued in confidence for engineering information only and may not be reproduced or used to manufacture anything shown hereon without permission from THE TECHNICAL MATERIEL CORPORATION to the user. This drawing is loaned for mutual assistance and is subject to recall at any time.

Property of:
THE TECHNICAL MATERIEL CORPORATION
MAMARONECK, NEW YORK

ISSUE	ITEM	CHANGED FROM	DATE	CH. NO.	DRAFTS	CHECKER	ENG. APP.
A	1	S-404 WAS S-101	12/15/59	1001	AKS		EMN
TOLERANCES			SCALE: <i>CP</i>				
DEC. DIM. \pm			MAXIMUM ALLOWABLE TOLERANCES HAVE BEEN DETERMINED AND ANY DEVIATIONS WILL BE CAUSE FOR REJECTION.				
FRAC. DIM. \pm			REMOVE ALL BURRS AND SHARP EDGES				
ANGULAR DIM. \pm							

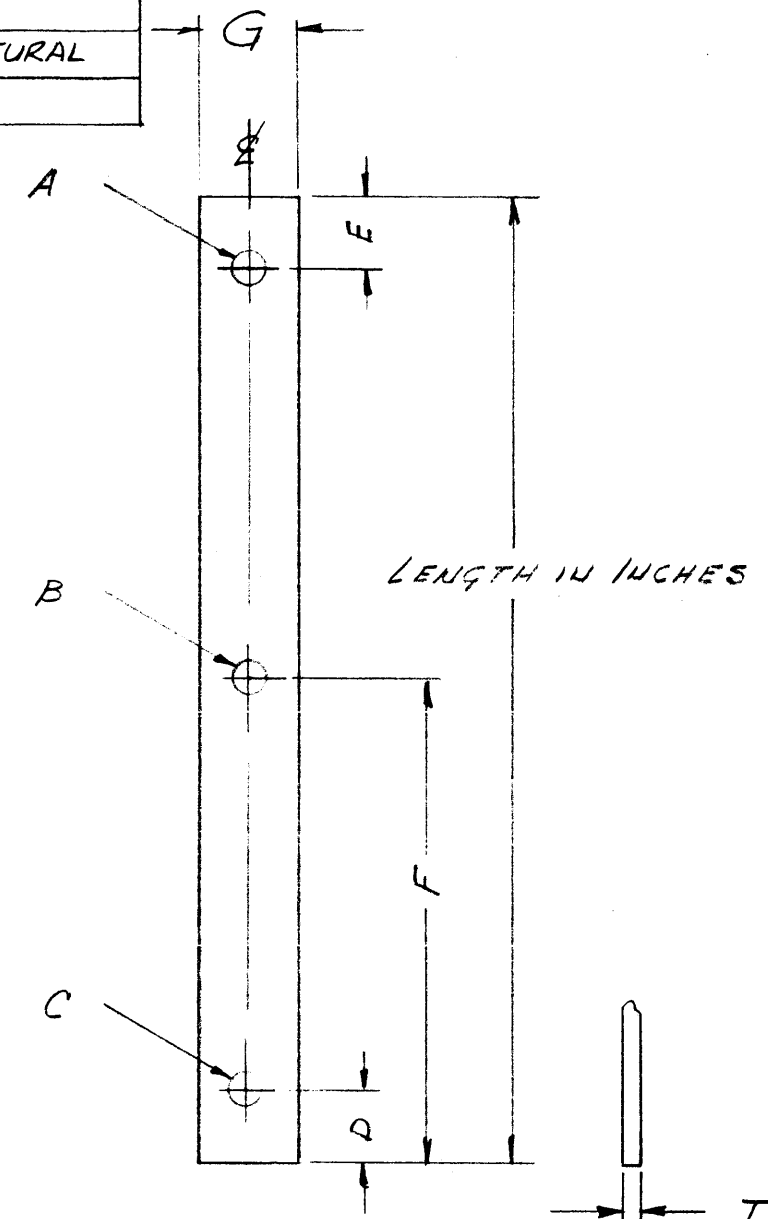
REQ. PER UNIT	MODEL	PROJECT NO.	ASS'Y. NO.	DATE
1	UTD-2	RAK-B		4-22-59
USED ON				

REQ. ITEM	PART NO.	DESCRIPTION	SYMBOL
	.081 THICK STOCK SIZE	THE TECHNICAL MATERIEL CORP. MAMARONECK. NEW YORK	
	ALUMINUM	BRACKET, WRAPAROUND	
	MATERIAL		
5052-H32	CP		
		DRAWN	CHECKED
		FINAL APPROVAL	
S-404 YELLOW IRIDITE			
		ELEC. DES. APP.	MECH. DES. APP.
		MS-1734 A	

A

MS-1753

TMC No.	A DIA.	B DIA.	C DIA.	D DIM. INCHES	E DIM. INCHES	F DIM. INCHES	G DIM. INCHES	T DIM. INCHES	MATERIAL	FINISH
MS-1753-1	NONE	NONE	NONE	NONE	NONE	NONE	- BLANK STRIP			
MS-1753-2	3/4	NONE	3/4	1 1/4	1 1/4	NONE	1/8	.040	COPPER STRIP	NATURAL



NOTICE TO PERSONS RECEIVING THIS DRAWING

THE TECHNICAL MATERIEL CORPORATION claims proprietary right in the material disclosed hereon. This drawing is issued in confidence for engineering information only and may not be reproduced or used to manufacture anything shown hereon without permission from THE TECHNICAL MATERIEL CORPORATION to the user. This drawing is loaned for mutual assistance and is subject to recall at any time.

Property of:
THE TECHNICAL MATERIEL CORPORATION
MAMARONECK, NEW YORK

NOMENCLATURE AS FOLLOWS:

MS-1753 - 1 - 9
 TMC DWG No. DRILLING PLAN CODE LENGTH (INCHES)

SEE APPROPRIATE ML FOR REQUIRED LENGTH!!

ISSUE	ITEM	CHANGED FROM	DATE	CH. NO.	DRAFTS	CHECKER	ENG. APP.
A		REV. & UPDATED	7/11/69	19501	GE	<i>JD</i>	EPM

TOLERANCES: DEC. DIM. ± 1/64; FRAC. DIM. ± 1/64; ANGULAR DIM. ±

SCALE: *CP*

MAXIMUM ALLOWABLE TOLERANCES HAVE BEEN DETERMINED AND ANY DEVIATIONS WILL BE CAUSE FOR REJECTION. REMOVE ALL BURRS AND SHARP EDGES

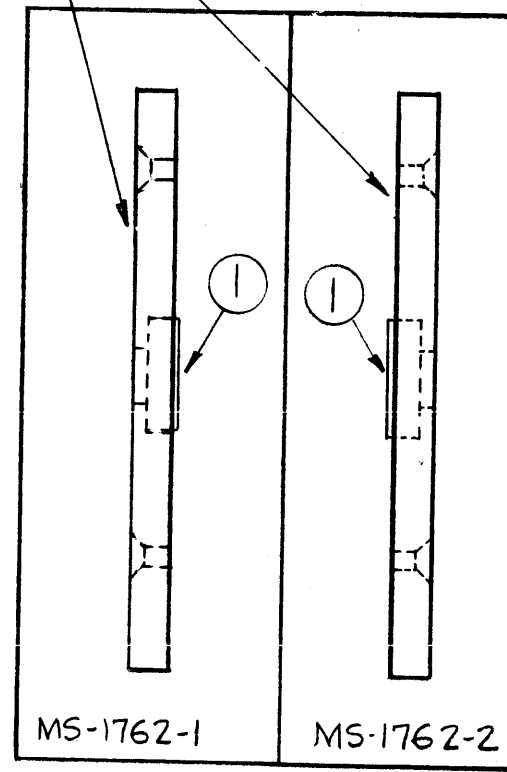
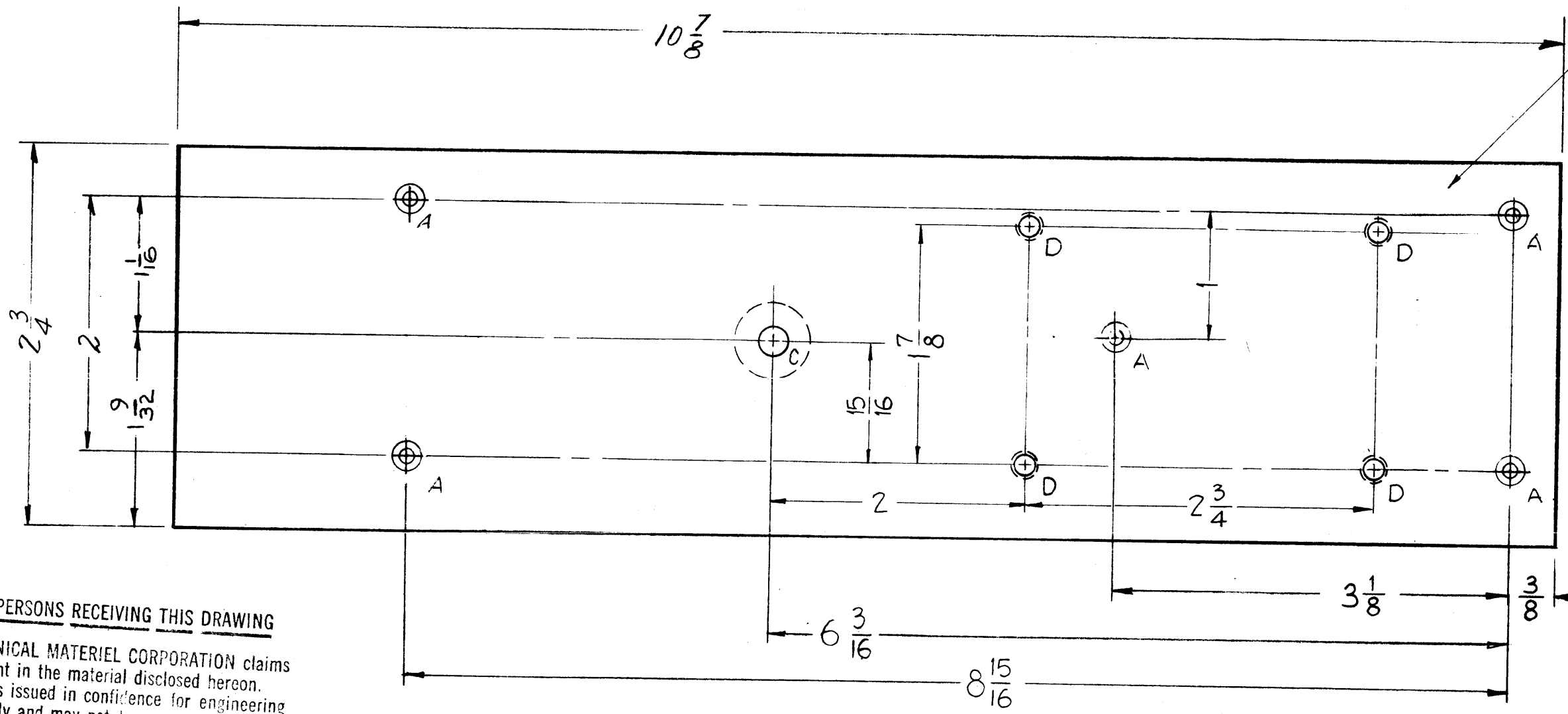
REQ. PER UNIT	GPT-10K	AX-166	ASS'Y. NO.	DATE
	MODEL	PROJECT NO.	ASS'Y. NO.	DATE
	USED ON			

REQ. ITEM	PART NO.	DESCRIPTION	SYMBOL
SEE CHART	SEE CHART	THE TECHNICAL MATERIEL CORP. MAMARONECK, NEW YORK	
SEE CHART	SEE CHART	LEAD, CONNECTING	

TYPE & TEMPER: HEAT TREAT. SPEC: DRAWN: *JCB* CHECKED: *AW* FINAL APPROVAL: *AW*

FINISH & SPEC. NO. ELEC. DES. APP. MECH. DES. APP. MS-1753 A

MS-1762 C



NOTICE TO PERSONS RECEIVING THIS DRAWING

THE TECHNICAL MATERIEL CORPORATION claims proprietary right in the material disclosed hereon. This drawing is issued in confidence for engineering information only and may not be reproduced or used to manufacture anything shown hereon without permission from THE TECHNICAL MATERIEL CORPORATION to the user. This drawing is loaned for mutual assistance and is subject to recall at any time.

Property of:
THE TECHNICAL MATERIEL CORPORATION
MAMARONECK, NEW YORK

A - DRILL & C'SINK FOR 6-32 F.H.S. 5 REQ.

MS-1762-1 C'SINK "A" HOLES AS SHOWN
MS-1762-2 C'SINK "A" HOLES FROM REAR

C - Dr. thru .413 Dia., then C'bore 5/8 Dia x 1/8 Deep. 1 REQ.

D - DR. & TAP FOR 8-32 F.H.S. 4 REQ.

ISSUE	ITEM	CHANGED FROM	DATE	CH. NO.	DRAFTS	CHECKER	ENG. APP.
C	1	DRAWING REVISED	4/26/61	4755	DDM	QOB	[Signature]
B	2	(4)"D" HOLES ADDED	2-15-61	4147	M.A.F.	QOB	[Signature]
B	1	(1)"B" HOLE 13/64 DELETED					
A	1	"B" HOLE RELOCATED	7-22-60	2628	CW	[Signature]	[Signature]

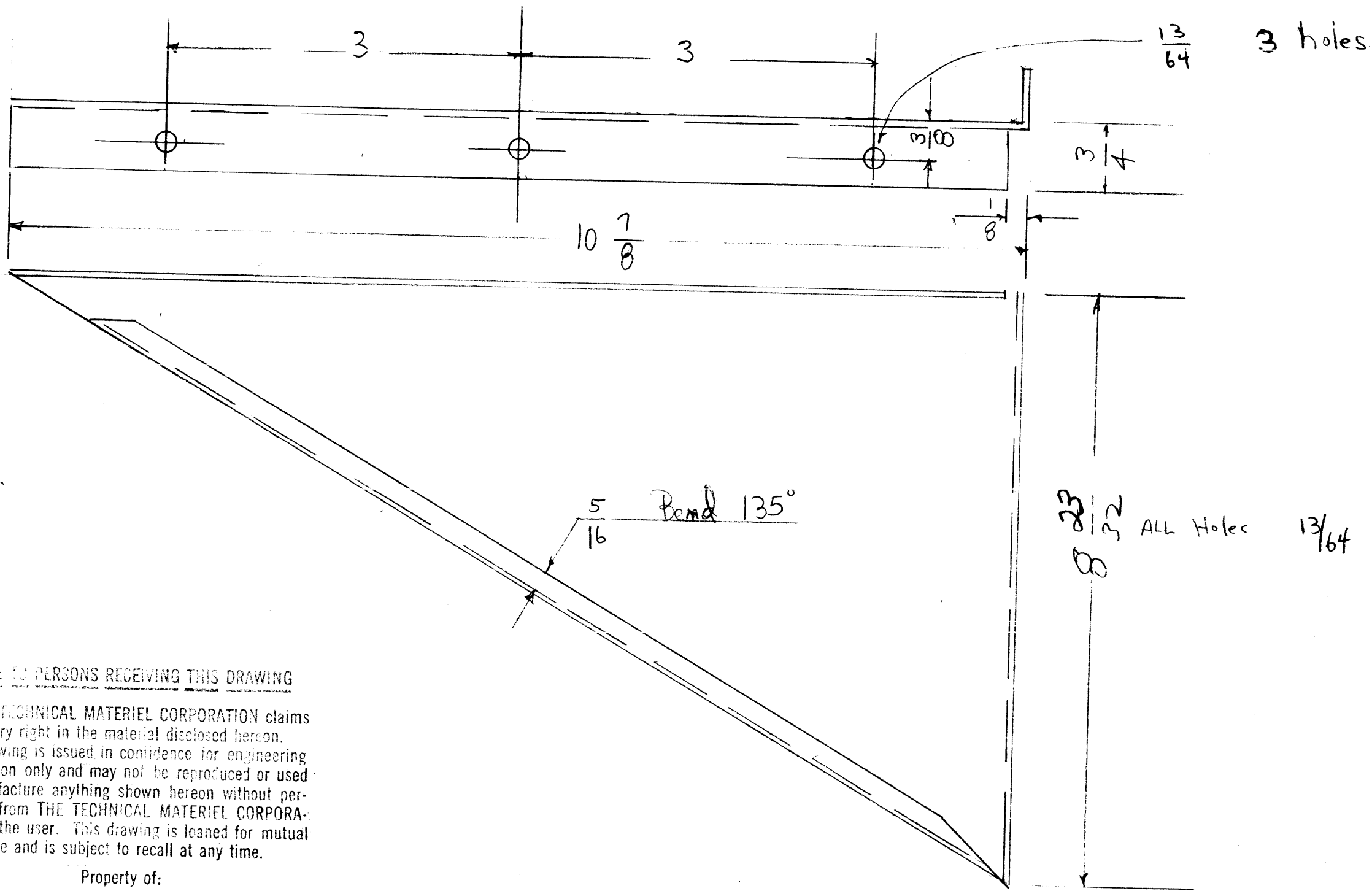
DEC. DIM. ±
FRAC. DIM. ± 1/64
ANGULAR DIM. ±

SCALE: DO NOT SCALE
MAXIMUM ALLOWABLE TOLERANCES HAVE BEEN DETERMINED AND ANY DEVIATIONS WILL BE CAUSE FOR REJECTION. REMOVE ALL BURRS AND SHARP EDGES

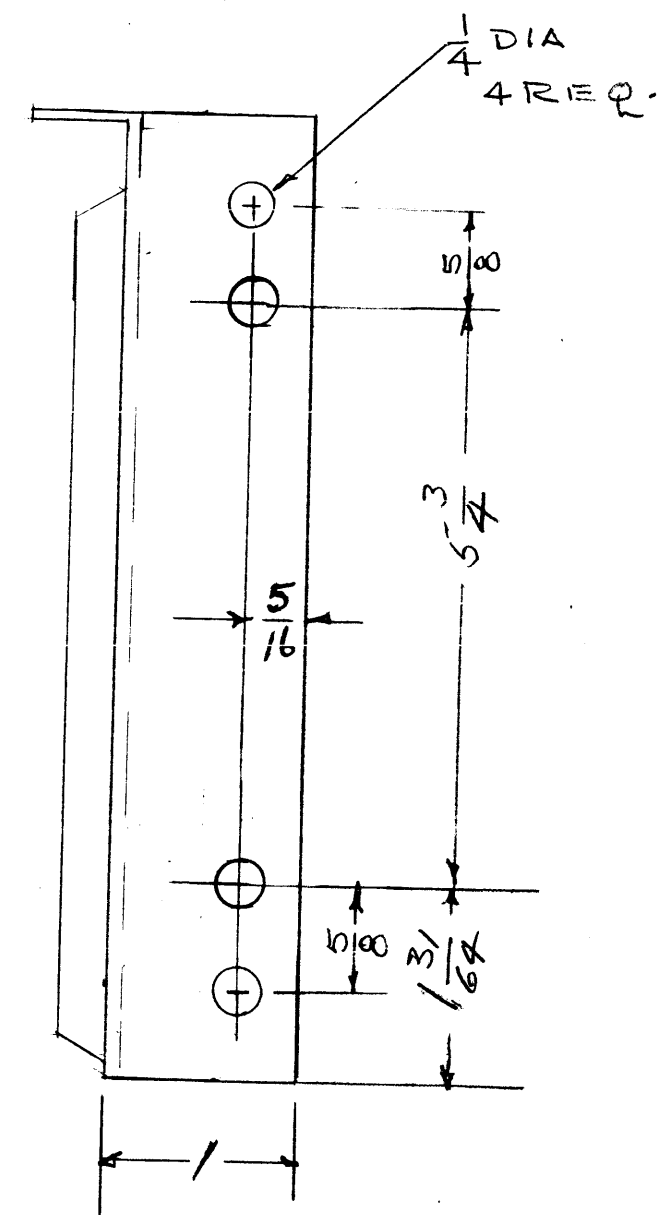
2 EA	SBE-2	GPT 10KW		56-59
REQ. PER UNIT	MODEL	PROJECT NO.	ASS'Y. NO.	DATE

1	1	NT-129-524-4	NUT, SWAGE TYPE (ROUND)	
REQ. ITEM	PART NO.		DESCRIPTION	SYMBOL
3/16 THICK STOCK SIZE			THE TECHNICAL MATERIEL CORP. MAMARONECK, NEW YORK	
ALUMINUM			SPACER, PLATE	
MATERIAL			L.H. & R.H. SBE-2	
5052-H32			DRAWN [Signature]	CHECKED [Signature]
TYPE & TEMPER		HEAT TREAT. SPEC.	FINAL APPROVAL [Signature]	
5404 IRIDIOTE			MS-1762 C	
FINISH & SPEC. NO.		ELEC. DES. APP.	MECH. DES. APP.	

MS-1770 A



3 holes.



23/32 ALL HOLES 13/64

NOTICE TO PERSONS RECEIVING THIS DRAWING

THE TECHNICAL MATERIEL CORPORATION claims proprietary right in the material disclosed hereon. This drawing is issued in confidence for engineering information only and may not be reproduced or used to manufacture anything shown hereon without permission from THE TECHNICAL MATERIEL CORPORATION to the user. This drawing is loaned for mutual assistance and is subject to recall at any time.

Property of:

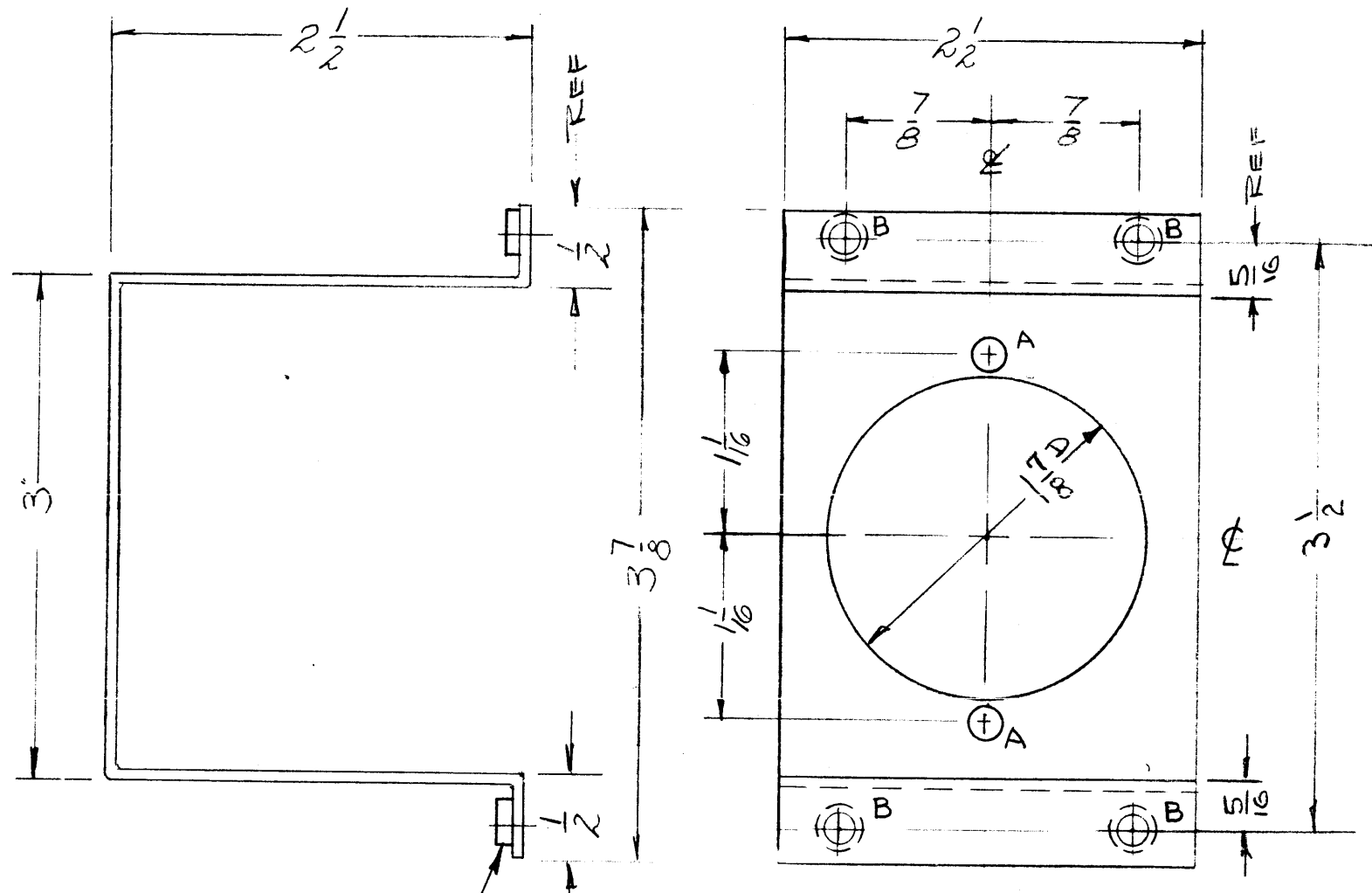
THE TECHNICAL MATERIEL CORPORATION
MAMARONECK, NEW YORK

MS-1770 - 1 BKT AS SHOWN
MS-1770 - 2 BKT OPPOSITE.

ISSUE	ITEM	CHANGED FROM	DATE	CH. NO.	DRAFTS	CHECKER	ENG. APP.
A	1	S-404 WAS S-101	12/15/59	1001	HB		EMN
TOLERANCES			SCALE:				
DEC. DIM. ±			MAXIMUM ALLOWABLE TOLERANCES HAVE BEEN DETERMINED AND ANY DEVIATIONS WILL BE CAUSE FOR REJECTION. REMOVE ALL BURRS AND SHARP EDGES				
FRAC. DIM. ±							
ANGULAR DIM. ±							

REQ. PER UNIT	MODEL	PROJECT NO.	ASS'Y. NO.	DATE
See Note			AX-	
USED ON				

REQ. ITEM	PART NO.	DESCRIPTION	SYMBOL
	081	THE TECHNICAL MATERIEL CORP. MAMARONECK, NEW YORK	
	STOCK SIZE		
	ALUM.	RACK, DESK BKT.	
	MATERIAL		
	TYPE & TEMPER	HEAT TREAT. SPEC.	
	S-404 YELLOW IRIDITE		
	FINISH & SPEC. NO.	ELEC. DES. APP.	MECH. DES. APP.
			MS-1770 A



A ~ $\frac{3}{16}$ DIA. HOLE 2 REQ.
 B ~ $\frac{.194}{.191}$ DIA. HOLE 4 REQ.

NOTICE TO PERSONS RECEIVING THIS DRAWING

THE TECHNICAL MATERIEL CORPORATION claims proprietary right in the material disclosed hereon. This drawing is issued in confidence for engineering information only and may not be reproduced or used to manufacture anything shown hereon without permission from THE TECHNICAL MATERIEL CORPORATION to the user. This drawing is loaned for mutual assistance and is subject to recall at any time.

Property of:
 THE TECHNICAL MATERIEL CORPORATION
 MAMARONECK, NEW YORK

① MOUNT AS SHOWN IN ALL "B" HOLES

REF. TMC. MS-1663 (8)

ISSUE	ITEM	CHANGED FROM	DATE	CH. NO.	DRAFTS	CHECKER	ENG. APP.
C	1	ADDED ITEM (1), (4) "B" HOLES WERE "A" HOLES	9-29-63	9666	ALC.	JMB	[Signature]
B	1	1 7/8 DIA CLARIFIED	9-14-60	2950	CU		[Signature]
A	1	DELETED 3" INSIDED DIA. 3 7/8 WAS REF DIM.	5/22/59				[Signature]

TOLERANCES: DEC. DIM. ±, FRAC. DIM. ± 1/64, ANGULAR DIM. ±

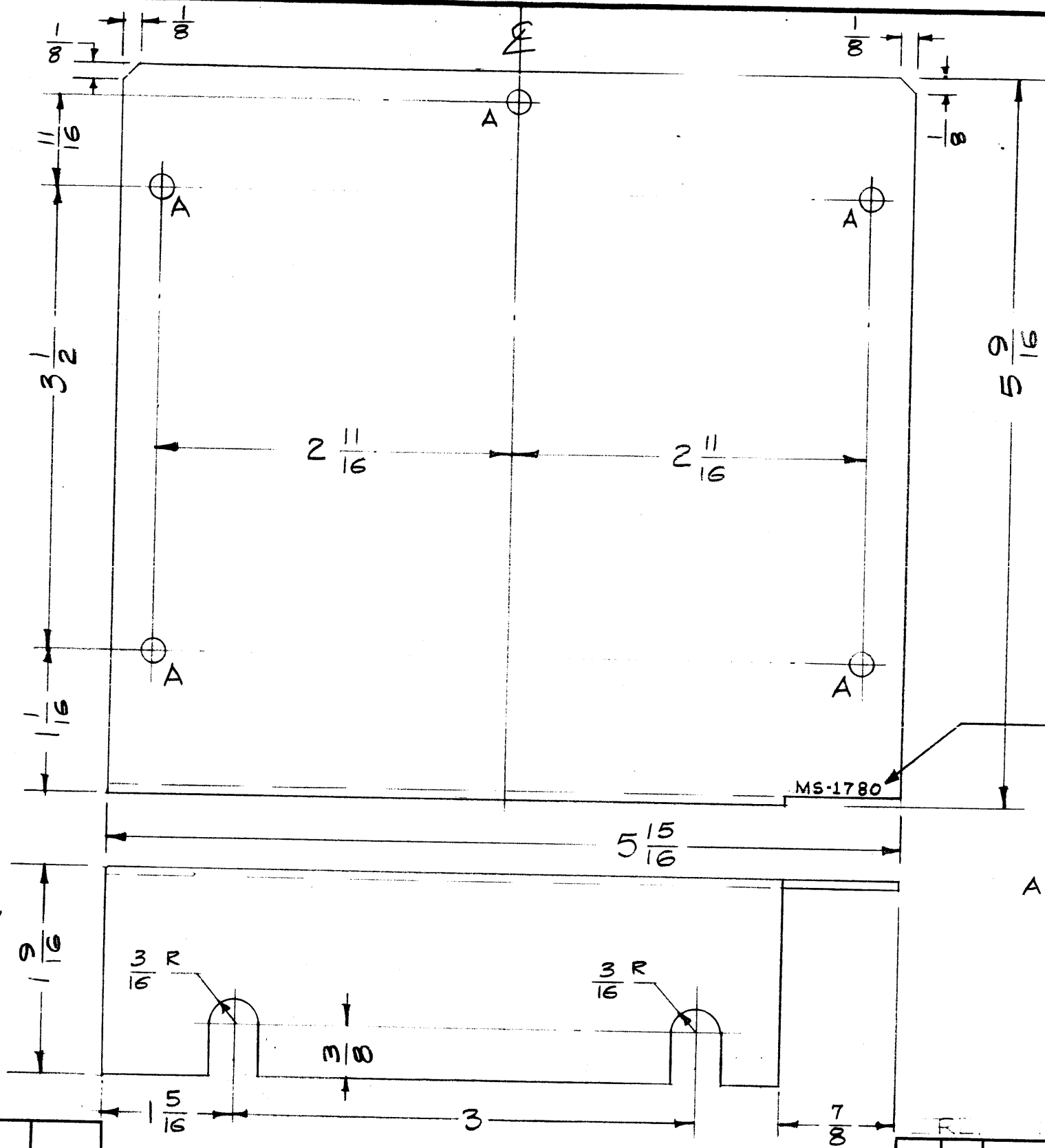
SCALE: *1/2" = 1"*

MAXIMUM ALLOWABLE TOLERANCES HAVE BEEN DETERMINED AND ANY DEVIATIONS WILL BE CAUSE FOR REJECTION. REMOVE ALL BURRS AND SHARP EDGES

1	APP-1			5-20-59
REQ. PER UNIT	MODEL	PROJECT NO.	ASS'Y. NO.	DATE
USED ON				

4	1	NT129-632-4	NUT, SWAGE TYPE	
REQ. ITEM	PART NO.		DESCRIPTION	SYMBOL
	.064 THICK		THE TECHNICAL MATERIEL CORP. MAMARONECK, NEW YORK	
	STOCK SIZE			
	ALUMINUM		BRACKET, REAR,	
	MATERIAL		UTILITY OUTLET	JJ-173
5052-H32				
3404 IRIDITE				
FINISH & SPEC. NO.		ELEC. DES. APP.	MECH. DES. APP.	FINAL APPROVAL
				[Signatures]
				MS-1771 C

MS-1780 A



NOTICE TO PERSONS RECEIVING THIS DRAWING

THE TECHNICAL MATERIEL CORPORATION claims proprietary right in the material disclosed hereon. This drawing is issued in confidence for engineering information only and may not be reproduced or used to manufacture anything shown hereon without permission from THE TECHNICAL MATERIEL CORPORATION to the user. This drawing is loaned for mutual assistance and is subject to recall at any time.

Property of:
THE TECHNICAL MATERIEL CORPORATION
 MAMARONECK, NEW YORK

METAL STAMP TMC PART NO. $\frac{1}{8}$ " HIGH GOTHIC

A - $\frac{3}{16}$ (.187) D. 5 Req.

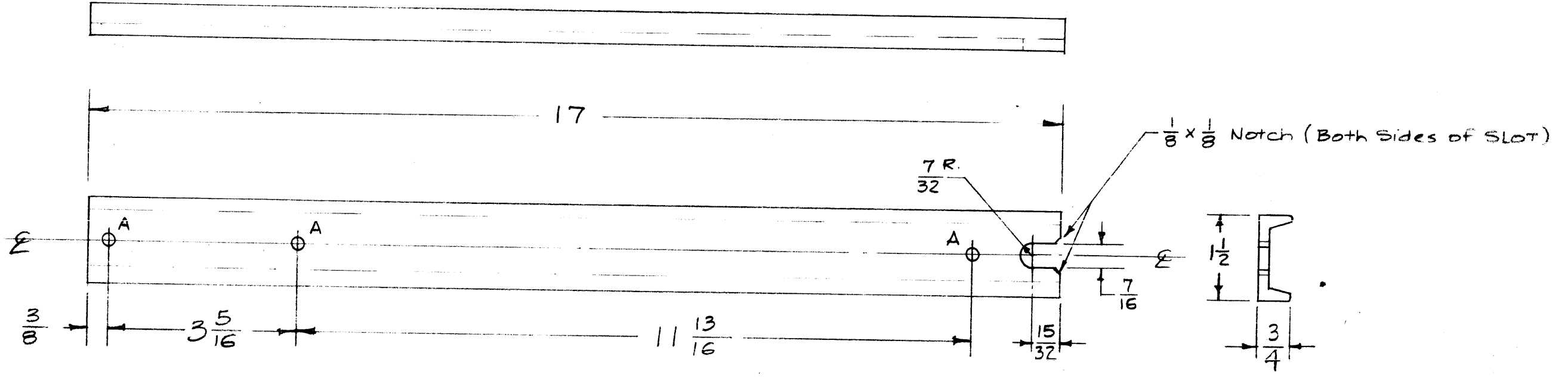
A	1	3" DIM. WAS 3 1/2	9-22-61	5611	GB	WB	RK	
I	SUE	ITEM	CHANGED FROM	DATE	CH. NO.	DRAFTS	CHECKER	ENG. APP.
TOLERANCES			SCALE: FULL (DO NOT SCALE)					
DEC. DIM. \pm			MAXIMUM ALLOWABLE TOLERANCES HAVE BEEN DETERMINED AND ANY DEVIATIONS WILL BE CAUSE FOR REJECTION: REMOVE ALL BURRS AND SHARP EDGES					
FRAC. DIM. \pm 1/64								
ANGULAR DIM. \pm								

REQ. PER UNIT	PS-5	PAL-1K		6-12-59
	MODEL	PROJECT NO.	ASSY. NO.	DATE
USED ON				

REQ. ITEM	PART NO.	DESCRIPTION	SYMBOL
.051 THK		THE TECHNICAL MATERIEL CORP.	
STOCK SIZE		MAMARONECK, NEW YORK	
Aluminum		COVER, CABLE JUNCTION CHASSIS	
MATERIAL			
5052-H32		16 1/2/59	
TYPE & TEMPER	HEATTREAT. SPEC.	DRAWN	CHECKED
5404 Iridite			
FINISH & SPEC. N.	ELEC. DES. APP.	MECH. DES. APP.	
			MS-1780 A

MS-1782 B

A - $\frac{13}{64}$ (.203) D. 3 Req.



NOTICE TO PERSONS RECEIVING THIS DRAWING

THE TECHNICAL MATERIEL CORPORATION claims proprietary right in the material disclosed hereon. This drawing is issued in confidence for engineering information only and may not be reproduced or used to manufacture anything shown hereon without permission from THE TECHNICAL MATERIEL CORPORATION to the user. This drawing is loaned for mutual assistance and is subject to recall at any time.

Property of:
THE TECHNICAL MATERIEL CORPORATION
MAMARONECK, NEW YORK

REV.	ITEM	CHANGED FROM	DATE	CH. NO.	DRAFTS	CHECKER	ENG. APP.
B	1	S105 CADMIUM PLATE ADDED TO FINISH	12/1/65	15312	R.V.	[Signature]	[Signature]
A	2	STOCK SIZE WAS 1 1/2 x 3/4 x 3/16.	10/26/60	3273	DYM	[Signature]	RR
	1	DM. 3/4 WAS 9/16.					

TOLERANCES: DEC. DIM. ± 1/64, FRAC. DIM. ± 1/64, ANGULAR DIM. ±

SCALE: 1/2 (Do Not Scale)

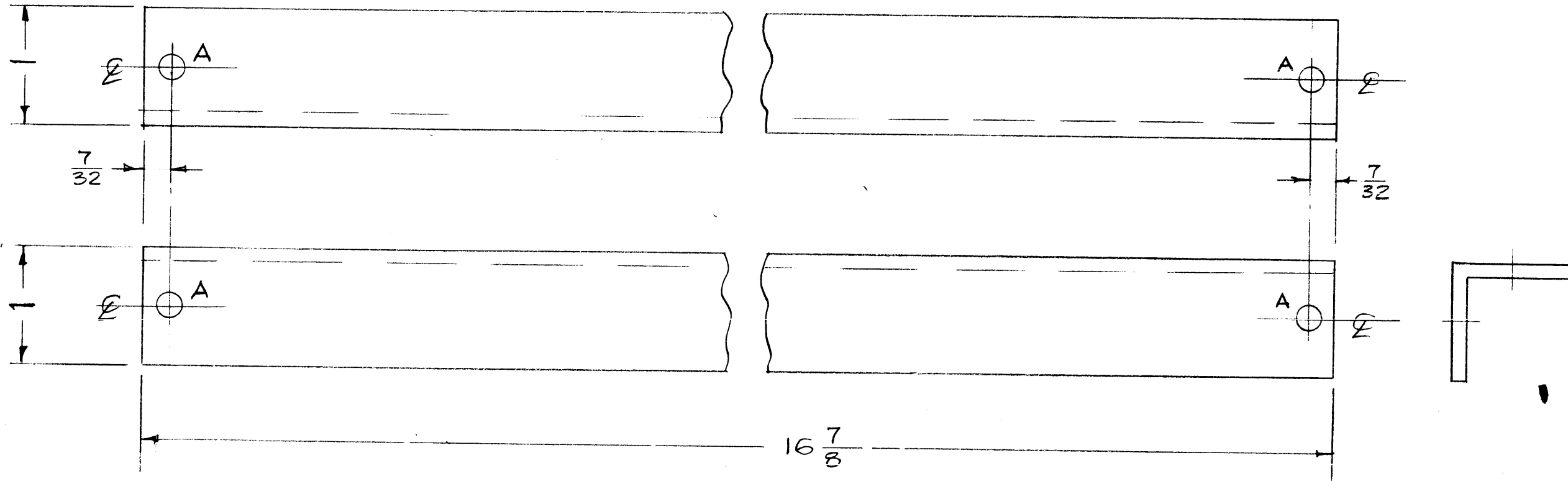
MAXIMUM ALL WABLE TOLERANCES HAVE BEEN DETERMINED AND ANY DEVIATIONS WILL BE CAUSE FOR REJECTION. REMOVE ALL BURRS AND SHARP EDGES

2	PS-5	PAL-1K	6-12-59
REQ. PER UNIT	MODEL	PROJECT NO.	AS Y. NO.
			DATE

USED ON

REQ. ITEM	PART NO.	DESCRIPTION	SYMBOL
1	1 1/2 x 3/4 x 1/8 Thk.	THE TECHNICAL MATERIEL CORP.	
	STOCK SIZE	MAMARONECK, NEW YORK	
	Steel "U" Channel	TRACK, SUPPORT	
	MATERIAL		
	Hot Rolled		
		16 1/2/59	[Signature]
	TYPE & TEMPER	HEAT TREAT. SPE.	DRAWN
	S105 CADMIUM PLATE		CHECKED
	S424 IRIDITE		FINAL APPROVAL
	FINISH & SPEC. N.		MS-1782
		ELEC. DES. APP.	MCH. DES. APP.

MS-1793



A - $\frac{13}{64}$ (.203) D. 4 Req.

NOTICE TO PERSONS RECEIVING THIS DRAWING

THE TECHNICAL MATERIEL CORPORATION claims proprietary right in the material disclosed hereon. This drawing is issued in confidence for engineering information only and may not be reproduced or used to manufacture anything shown hereon without permission from THE TECHNICAL MATERIEL CORPORATION to the user. This drawing is loaned for mutual assistance and is subject to recall at any time.

Property of:
THE TECHNICAL MATERIEL CORPORATION
MAMARONECK, NEW YORK

ISSUE	ITEM	CHANGED FROM	DATE	CH. NO.	DRAFTS	CHECKER	ENG. APP.
TOLERANCES							
DEC. DIM. \pm			SCALE: FULL (Do Not Scale)				
FRAC. DIM. $\pm 1/64$			MAXIMUM ALLOWABLE TOLERANCES HAVE BEEN DETERMINED AND ANY DEVIATIONS WILL BE CAUSE FOR REJECTION.				
ANGULAR DIM. \pm			REMOVE ALL BURRS AND SHARP EDGES				

1	PS-4	PAL-1K		6-18-59
REQ. PER UNIT	MODEL	PROJECT NO.	ASS'Y. NO.	DATE
USED ON				

REQ. ITEM	PART NO.	DESCRIPTION	SYMBOL
	$1/8 \times 1 \times 1$ $\&$	THE TECHNICAL MATERIEL CORP. MAMARONECK, NEW YORK	
	STOCK SIZE	SUPPORT, REAR	
	Aluminum	PS-4	
	MATERIAL		
6063-T3		16 ^{6/18/59} <i>[Signature]</i>	<i>[Signature]</i> <i>[Signature]</i>
TYPE & TEMPER	HEAT TREAT. SPEC.	DRAWN	CHECKED
5404 Iridite		<i>[Signature]</i>	
FINISH & SPEC. NO.	ELEC. DES. APP.	MECH. DES. APP.	MS-1793