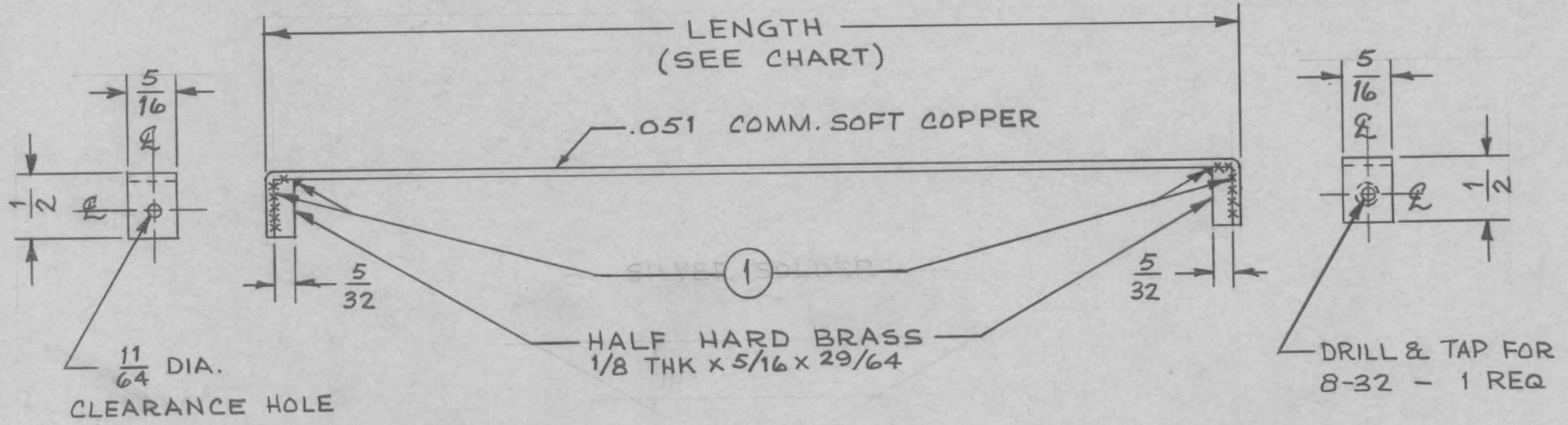


TMC PART #	LENGTH	USED ON	QUAN.
MS-1700-1	5 5/8	RFB-1	1
		RFC-1	2
		RFD-1	2
MS-1700-2	6 5/16	RFB-1	1
MS-1700-3	9 23/32	AT-103	1

REQ. PER UNIT	USED ON			MS-1700	G
	MODEL	ASS'Y. NO.	DATE		



SYM	DESCRIPTION	DATE	CH. NO.	DRAFTS	CHECKER	ENG. APP.	REQ. ITEM	PART NO.	DESCRIPTION	SYMBOL
							X 1	BS101-1	SOLDER, SILVER	
								AS SHOWN	THE TECHNICAL MATERIEL CORP. MAMARONECK, NEW YORK	
								STOCK SIZE		
G	ADD IT. 1 TO B/M	3.2.67	17879	HLA	Q/B	[Signature]		AS SHOWN	STRAP CONTACT VACUUM CAPACITOR	
F	29/64 WAS 15/32	3/31/64	11149	A.M.	@	[Signature]		MATERIAL		
								— # —		
								— # —	JORILLO	AKB
								TYPE & TEMPER	CHECKED	FINAL APPROVAL
								S245 SILVER PLATE	AGB	MS-1700
								.0003	JMB	G
								FINISH & SPEC. NO.	ELEC. DES. APP.	MECH. DES. APP.

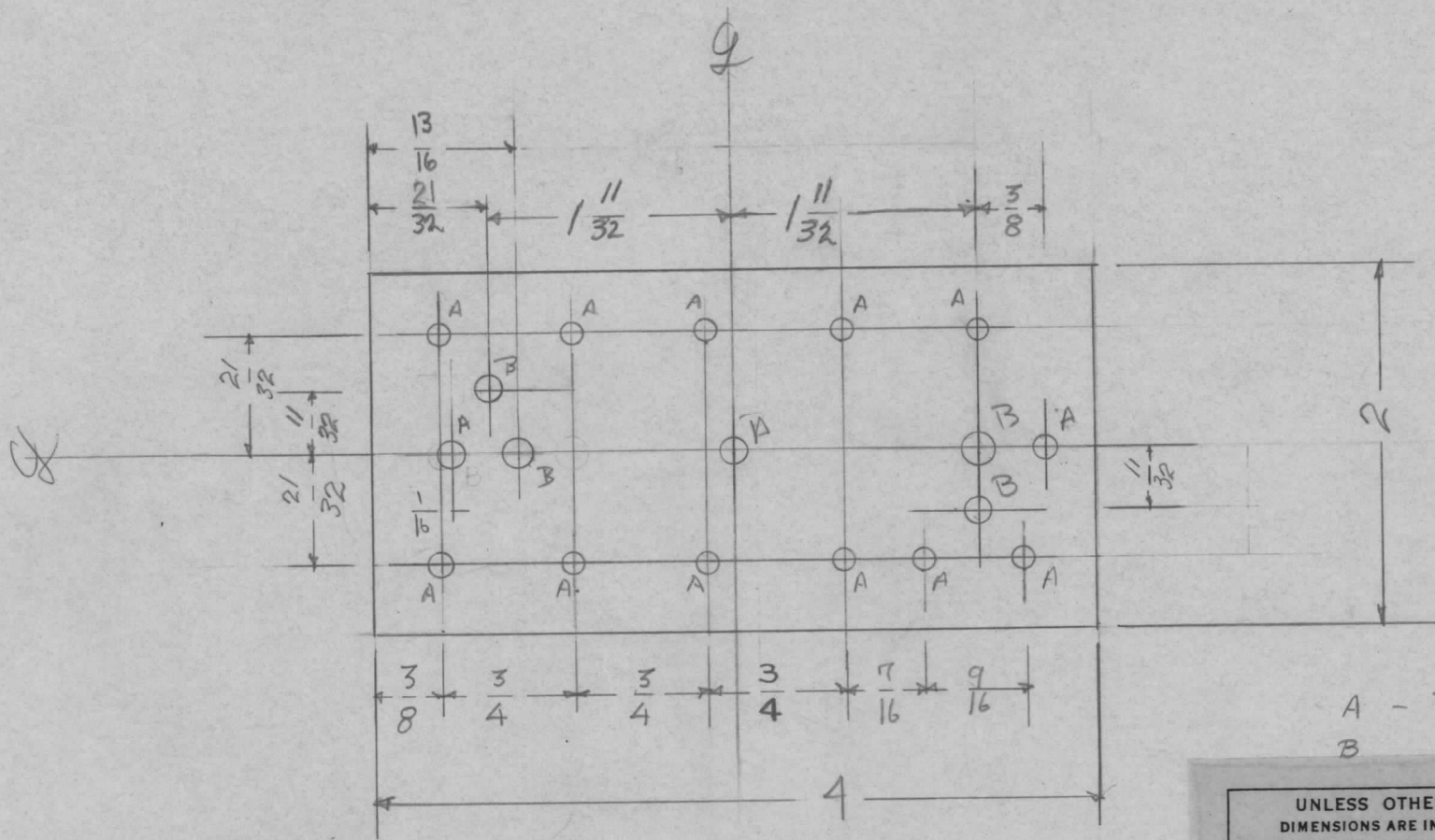
UNLESS OTHERWISE SPECIFIED DIMENSIONS ARE IN INCHES AND INCLUDE CHEMICALLY APPLIED OR PLATED FINISHES

DECIMALS
.X ± .05
.XX ± .01
.XXX ± .005

FRACTIONS
± 1/64
ANGLES
± 0° 30'

TOLERANCES

REQ. PER. UNIT	USED ON			MS-1708	△
	MODEL	ASS'Y. NO.	DATE		
1	GPT-10K	R.F. Section			



A - $\frac{1}{8}$ = 14 holes
 B $\frac{3}{16}$ = 4 holes

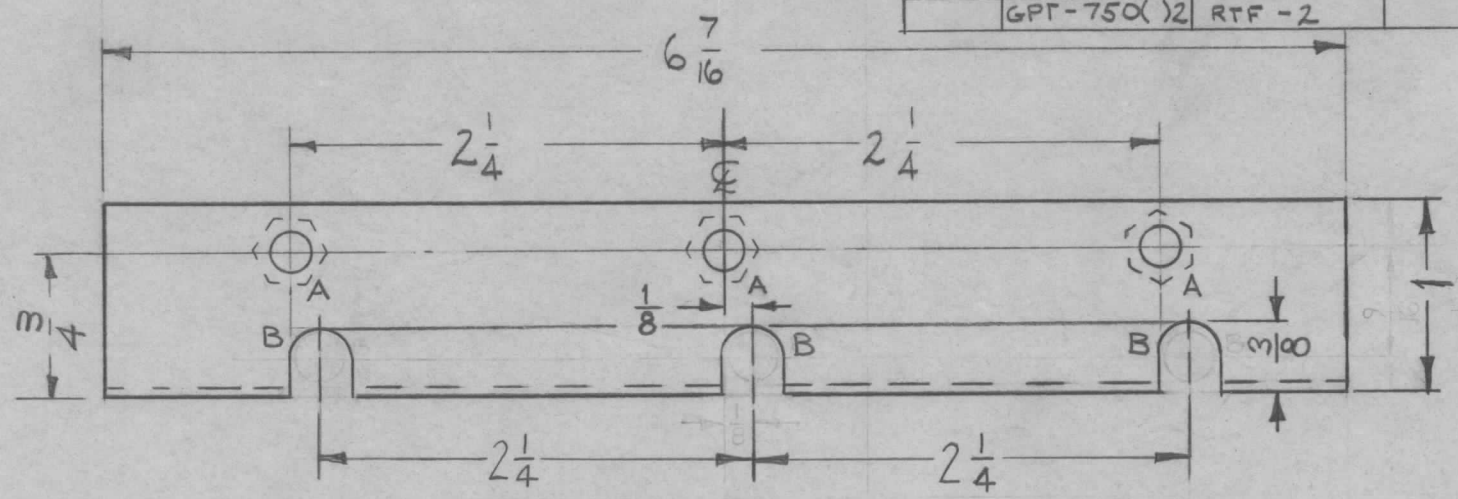
UNLESS OTHERWISE SPECIFIED
 DIMENSIONS ARE IN INCHES AND INCLUDE
 CHEMICALLY APPLIED OR PLATED FINISHES

DECIMALS	TOLERANCES	FRACTIONS
.X ± .05		± 1/64
.XX ± .01		ANGLES
.XXX ± .005		± 0° 30'

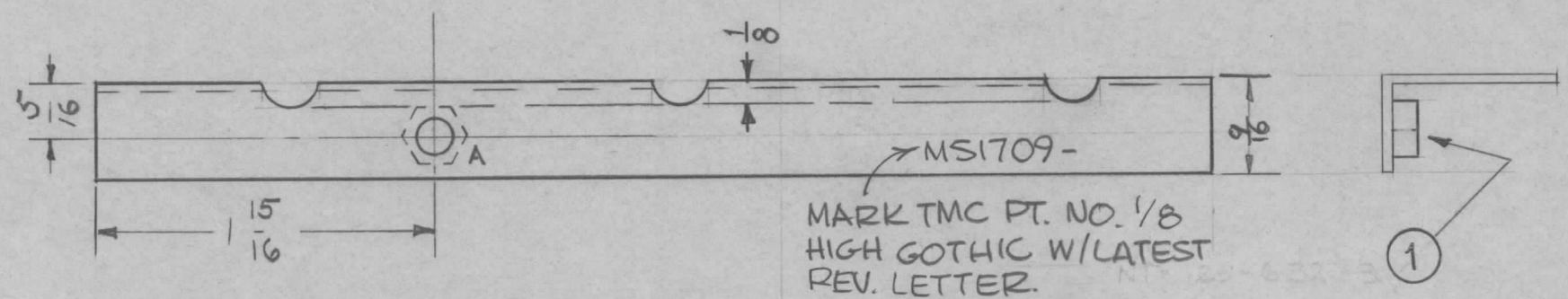
CUT HERE
 GUARANTEED
 2-66

ISSUE	ITEM	CHANGED FROM	DATE	CH. NO.	DRAFTS	CHECKER	ENG. APP.	REQ.	ITEM	PART NO.	DESCRIPTION	SYMBOL					
										064	THE TECHNICAL MATERIEL CORP.						
										STOCK SIZE	MAMARONECK, NEW YORK						
										ALUM.	Terminal Board monitor						
										MATERIAL	ALD.C						
A	1	3/4 Dim Added (center) (Error)	3-1-61	4269	RU	JCB	BB			5052-1432	4/2/59						
TOLERANCES			SCALE:					TYPE & TEMPER		HEATTREAT. SPEC.		DRAWN		CHECKED		FINAL APPROVAL	
DEC. DIM. ±			MAXIMUM ALLOWABLE TOLERANCES HAVE BEEN DETERMINED AND ANY DEVIATIONS WILL BE CAUSE FOR REJECTION. REMOVE ALL BURRS AND SHARP EDGES					IRIDITE									
FRAC. DIM. ±								FINISH & SPEC. NO.		ELEC. DES. APP		MECH. DES. APP		ms-1708		A	
ANGULAR DIM. ±																	

REQ. PER. UNIT	USED ON			MS 1709	D
	MODEL	ASS'Y. NO.	DATE		
1	GPT-750(1)	RTF-1			
	GPT-750(2)	RTF-2			



A - (191-194) DIA. 4 REQ'D.
 B - 5/16 X 1/2 SLOT — 3 REQ.

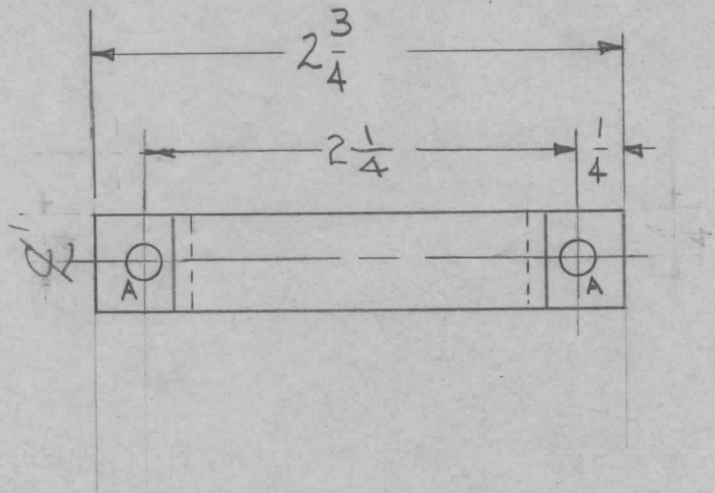


MARK TMC PT. NO. 1/8
 HIGH GOTHIC W/LATEST
 REV. LETTER.

NOTE:
 GPT-750-1 S404 (VEL, IRIDITE)
 GPT-750-2 S-404

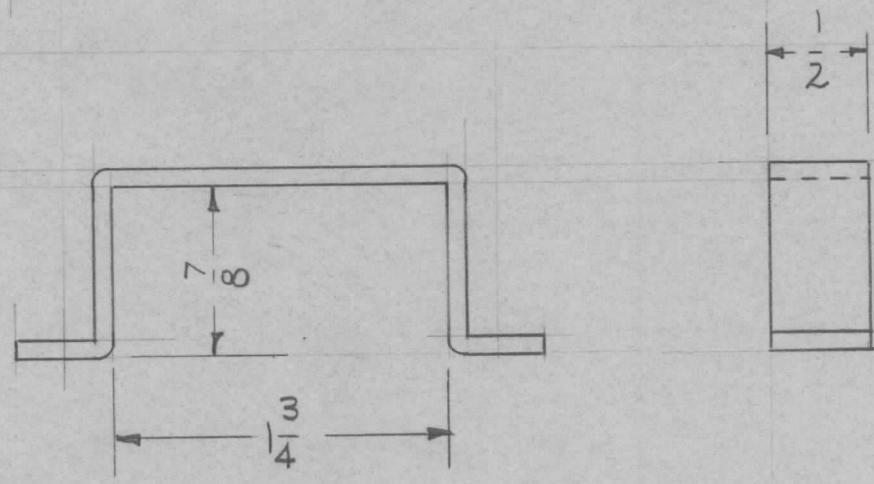
D		ADD IT1. DELE NT129-NOTE ADD TMC PT. NO.	11-15-66	17262	RME	<i>[Signature]</i>	<i>[Signature]</i>	4	1	NT129-632-3	NUT, PLAIN, SPLINE				
C	2	1" O/A DIM ADDED	A-3-61	4570	M.A.F.	<i>[Signature]</i>	<i>[Signature]</i>	051					THE TECHNICAL MATERIEL CORP. MAMARONECK, NEW YORK MOUNTING BRACKET FAN COVER		
B	1	3(B) HOLES ADDED	11-15-60	3469	RED	<i>[Signature]</i>	<i>[Signature]</i>	ALUMINUM							
A	1	S404 IRIDITE WAS S101-S107	12-8-59	1001	P	<i>[Signature]</i>	EMN	MATERIAL							
ISSUE ITEM CHANGED FROM			DATE	CH. NO.	DRAFTS	CHECKER	ENG. APP.	5052-H 32							
TOLERANCES			SCALE:					TYPE & TEMPER		HEATTREAT. SPEC.		DRAWN	CHECKED	FINAL APPROVAL	
DEC. DIM. ±			MAXIMUM ALLOWABLE TOLERANCES HAVE BEEN DETERMINED AND ANY DEVIATIONS WILL BE CAUSE FOR REJECTION. REMOVE ALL BURRS AND SHARP EDGES					SEE NOTE						MS 1709	D
FRAC. DIM. ±								FINISH & SPEC. NO.		ELEC. DES. APP		MECH. DES. APP			
ANGULAR DIM. ± 1/64															

REQ. PER. UNIT	USED ON			MS-1710	Ø
	MODEL	ASS'Y. NO.	DATE		
1	GPT-750() 1	RTF-1	3-11-59		
1	GPT-750() 2	RTF-2			



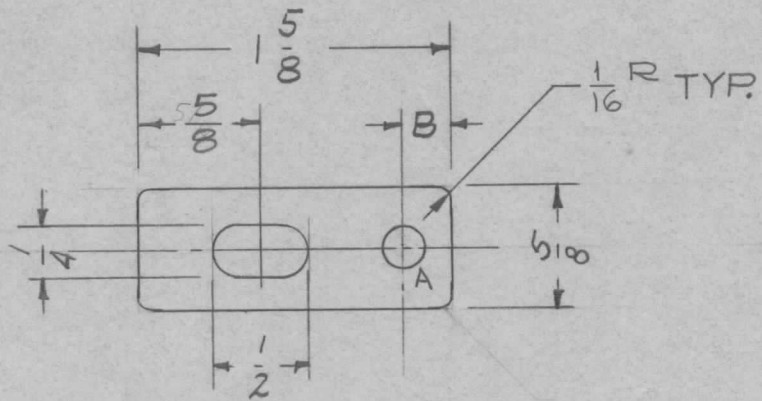
A - (.171) DIA. 2 REQ'D.

NOTE: FINISH
 FOR -GPT 750-1 - S-101 & S107
 FOR -GPT 750-2 - S-404



ISSUE	ITEM	CHANGED FROM	DATE	CH. NO.	DRAFTS	CHECKER	ENG. APP.	REQ. ITEM	PART NO.	DESCRIPTION	SYMBOL				
										THE TECHNICAL MATERIEL CORP. MAMARONECK, NEW YORK					
									.081 STOCK SIZE	CONDENSER BRACKET					
									ALUMINUM MATERIAL						
Ø		ORIGINAL RELEASE	9/26/69			Q			5052 H32	Drawn: <i>Forillo</i> 4/14/59 Checked: <i>HDe</i>	Final Approval: <i>STM</i> 9/26/69				
TOLERANCES			SCALE:					TYPE & TEMPER		DRAWN		CHECKED		FINAL APPROVAL	
DEC. DIM. ± FRAC. DIM. ± ANGULAR DIM. ±			MAXIMUM ALLOWABLE TOLERANCES HAVE BEEN DETERMINED AND ANY DEVIATIONS WILL BE CAUSE FOR REJECTION. REMOVE ALL BURRS AND SHARP EDGES					5 SEE NOTE						MS-1710 Ø	
								FINISH & SPEC. NO.		ELEC. DES. APP		MECH. DES. APP			

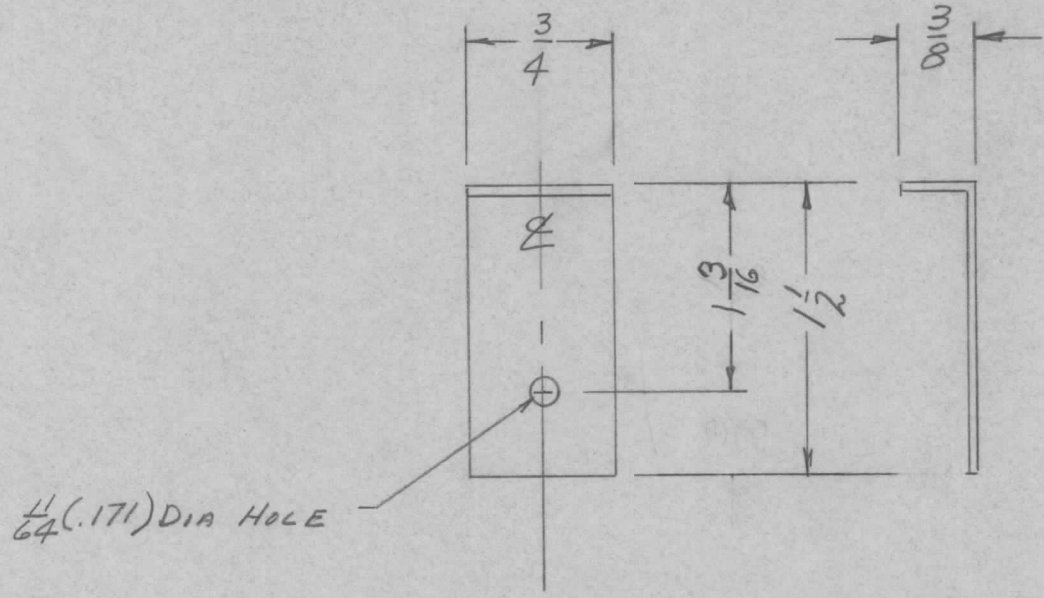
REQ. PER. UNIT	USED ON			MS-1714	B
	MODEL	ASS'Y. NO.	DATE		
2	GPT10KW	A-1662	4/9/59		



TMC NO.	A	B
MS-1714-1	.189 DIA.	1/4
MS-1714-2	25/64 DIA	3/8

ISSUE	ITEM	CHANGED FROM	DATE	CH. NO.	DRAFTS	CHECKER	ENG. APP.	REQ. ITEM	PART NO.	DESCRIPTION	SYMBOL						
										THE TECHNICAL MATERIEL CORP. MAMARONECK, NEW YORK							
B	2	A WAS 29/64 DIA. (MS-1714-2)	5-23-62	6732	GG	HA	QB	1/16		LEAD, CONNECTING,							
	1	A WAS 13/64 DIA. (MS-1714-1)						STOCK SIZE		FILAMENT COIL							
A	1	DIM 1/16 R. ADDED	11-3-60	3375	PH	FW	QB	BRASS									
TOLERANCES			SCALE: FULL					MATERIAL									
DEC. DIM. ±			MAXIMUM ALLOWABLE TOLERANCES HAVE BEEN DETERMINED AND ANY DEVIATIONS WILL BE CAUSE FOR REJECTION. REMOVE ALL BURRS AND SHARP EDGES					HALF HARD.		DRAWN		CHECKED	FINAL APPROVAL				
FRAC. DIM. ± 1/64								TYPE & TEMPER		HEAT TREAT. SPEC.		NONE		G.G.		MS-1714	B
ANGULAR DIM. ±								FINISH & SPEC. NO.		ELEC. DES. APP		MECH. DES. APP					

REQ. PER. UNIT	USED ON			MS-1715	A
	MODEL	ASS'Y. NO.	DATE		
2	GPT-10K	AX-166	4-13-59		



								REQ.	ITEM	PART NO.	DESCRIPTION			SYMBOL				
								.051 THICK		THE TECHNICAL MATERIEL CORP.								
								STOCK SIZE		MAMARONECK, NEW YORK								
								ALUMINUM		BRACKET, FILTER								
								MATERIAL										
A	1	DIM. $1\frac{3}{16}$ WAS $1\frac{5}{16}$	2-26-60	1869	JHS			5052-H32										
ISSUE	ITEM	CHANGED FROM	DATE	CH. NO.	DRAFTS	CHECKER	ENG. APP.			DRAWN		CHECKED	FINAL APPROVAL					
TOLERANCES			SCALE: CVD					5404 IRIDITE										
DEC. DIM. \pm			MAXIMUM ALLOWABLE TOLERANCES HAVE BEEN DETERMINED AND ANY DEVIATIONS WILL BE CAUSE FOR REJECTION. REMOVE ALL BURRS AND SHARP EDGES					FINISH & SPEC. NO.		ELEC. DES. APP		MECH. DES. APP						
FRAC. DIM. \pm $\frac{1}{64}$																MS-1715		A
ANGULAR DIM. \pm																		

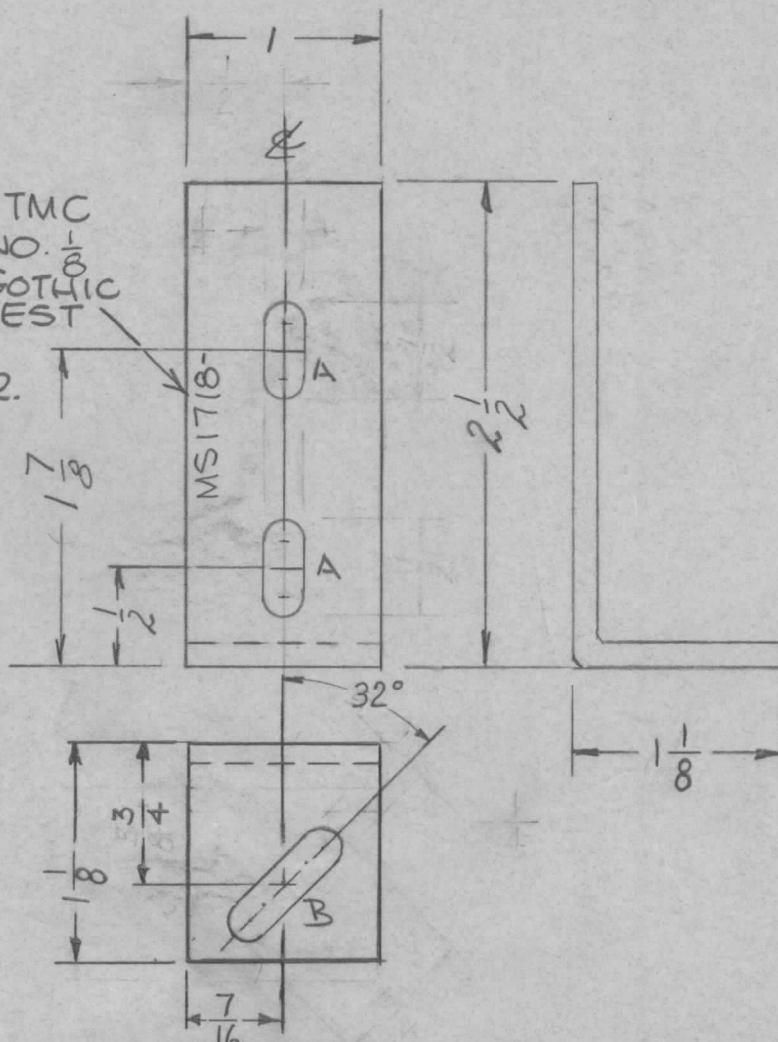
REQ. PER. UNIT	USED ON		
	MODEL	ASS'Y. NO.	DATE
2	RTS-2		4-16-59
2	RTX-2		4-28-59

MS1718 D

MS-1718-1 ~ Right Side (As Shown)

MS-1718-2 ~ Left Side (OPPOSITE HAND)

MARK TMC
PART NO. $\frac{1}{8}$
HIGH GOTHIC
W/LATEST
REV.
LETTER.



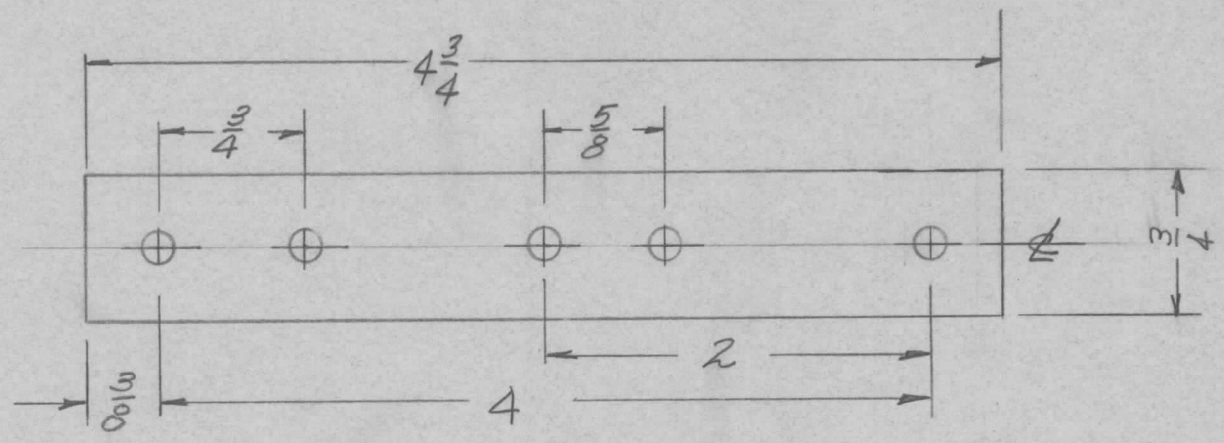
A - $\frac{1}{4} \times \frac{1}{2}$ SLOTS 2 REQ
B - $\frac{5}{16} \times \frac{5}{8}$ SLOT 1 REQ

USE $\frac{1}{8}$ RADIUS FOR BEND

ISSUE	ITEM	CHANGED FROM	DATE	CH. NO.	DRAFTS	CHECKER	ENG. APP.	REQ.	ITEM	PART NO.	DESCRIPTION	SYMBOL				
D		CHG'D $\frac{5}{8}$ TO $\frac{3}{4}$. "B" WAS $\frac{1}{4} \times \frac{3}{4}$ ADD TMC#	1.5.67	17607	RME											
C	3	32° WAS 45°	10-13-60	3190	MJD	file	file				THE TECHNICAL MATERIEL CORP. MAMARONECK, NEW YORK	BRACKET, UNIT SUPPORT				
	2	DIM. $\frac{1}{8}$ WAS 1"														
	1	DIMS. $\frac{1}{4}$ WERE $\frac{7}{32}$														
B	1	6404 IRIDITE WAS S101 CAUSTIC DIP	12-8-59	1001			EMN									
A	1	MS 1718-1 Left Side added MS 1718-2 Right side	5/18/59	1030	J.C.B.	file										
TOLERANCES			SCALE: <i>CAD</i>			5052-H32										
DEC. DIM. \pm FRAC. DIM. \pm $\frac{1}{64}$ ANGULAR DIM. \pm 0.5°			MAXIMUM ALLOWABLE TOLERANCES HAVE BEEN DETERMINED AND ANY DEVIATIONS WILL BE CAUSE FOR REJECTION. REMOVE ALL BURRS AND SHARP EDGES					TYPE & TEMPER HEAT TREAT. SPEC.			DRAWN		CHECKED		FINAL APPROVAL	
								S404YEL-IRIDITE							MS1718 D	
								FINISH & SPEC. NO.			ELEC. DES. APP		MECH. DES. APP			

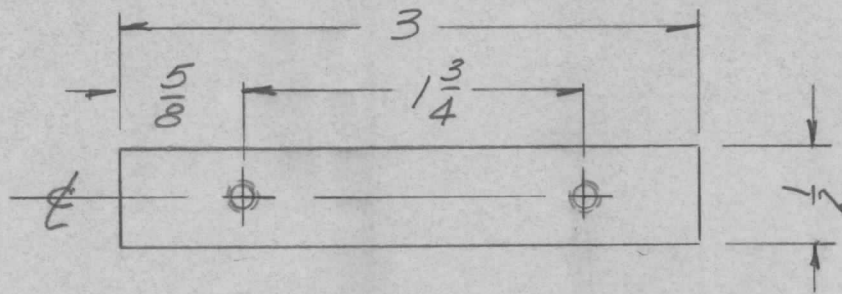
REQ. PER. UNIT	USED ON			MS-1722	A
	MODEL	ASS'Y. NO.	DATE		
2	RTS-2		4-17-59		

ALL HOLE $\frac{13}{64}$ DIA.



ISSUE	ITEM	CHANGED FROM	DATE	CH. NO.	DRAFTS	CHECKER	ENG. APP.	REQ.	ITEM	PART NO.	DESCRIPTION	SYMBOL	
										1/8 THICK STOCK SIZE	THE TECHNICAL MATERIEL CORP. MAMARONECK, NEW YORK		
A	1	3404-YEL IRIDITE WAS 3101 CAUSTIC DIP	12-8 59	1001	P		EMN			ALUMINUM	STRAP, FILLER, RIGHT SIDE		
TOLERANCES								SCALE: <i>CP</i>					
DEC. DIM. ± FRAC. DIM. ± <i>1/64</i> ANGULAR DIM. ±								MAXIMUM ALLOWABLE TOLERANCES HAVE BEEN DETERMINED AND ANY DEVIATIONS WILL BE CAUSE FOR REJECTION. REMOVE ALL BURRS AND SHARP EDGES					
								5052-H32			<i>me</i>	<i>db</i>	
								TYPE & TEMPER	HEAT TREAT. SPEC.	DRAWN	CHECKED	FINAL APPROVAL	
								3404-YEL-IRIDITE				MS-1722	A
								FINISH & SPEC. NO.	ELEC. DES. APP	MECH. DES. APP			

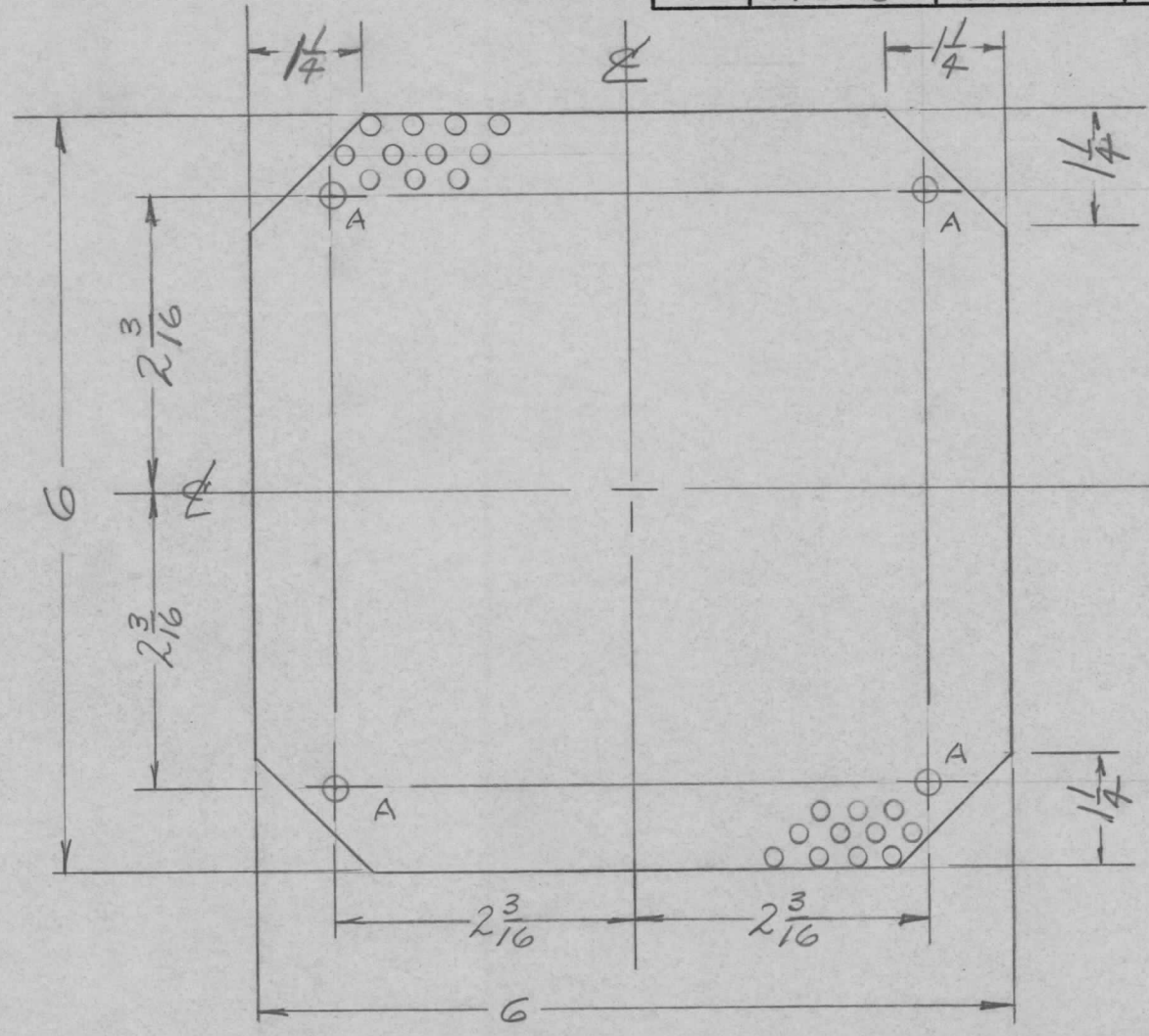
REQ. PER UNIT	USED ON			MS-1726	A
	MODEL	ASSY. NO.	DATE		
6	RAK-8		4-20-59		



DRILL & TAP 8-32 CL 2
2 HOLES

ISSUE	ITEM	CHANGED FROM	DATE	CH. NO.	DRAFTS	CHECKER	ENG. APP.	REQ. ITEM	PART NO.	DESCRIPTION	SYMBOL		
								119A		THE TECHNICAL MATERIEL CORP. MAMARONECK, NEW YORK			
								STEEL		NUT, BAR			
A	1	S404-YEL-IRIDITE WAS S101 CAUSTIC DIP	12-8 59	1001	P		EMN	MILD					
TOLERANCES			SCALE: <i>1/16</i>										
DEC. DIM. ± FRAC. DIM. ± <i>1/64</i> ANGULAR DIM. ±			MAXIMUM ALLOWABLE TOLERANCES HAVE BEEN DETERMINED AND ANY DEVIATIONS WILL BE CAUSE FOR REJECTION: REMOVE ALL BURRS AND SHARP EDGES										
								TYPE & TEMPER	HEAT TREAT. SPEC.	DRAWN	CHECKED	FINAL APPROVAL	
								S404-YEL IRIDITE S114 ZINC CHROM. PRIM. S220 THE RCAF SMOOTH BGV					
								FINISH & SPEC. NO.	ELEC. DES. APP	MECH. DES. APP			
												MS-1726	A

REQ. PER. UNIT	USED ON			MS-1733	B
	MODEL	ASS'Y. NO.	DATE		
1	UTD-2	RAK-8	4-21-59		

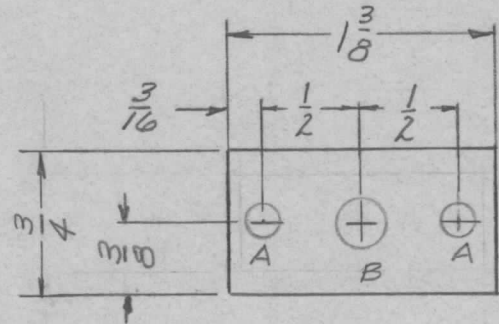


A - $\frac{11}{64}$ (.171) DIA HOLE - 4 Req.

Perforated Matl.
.150 DIA. HOLES
ON $\frac{3}{16}$ ES

ISSUE	ITEM	CHANGED FROM	DATE	CH. NO.	DRAFTS	CHECKER	ENG. APP.	REQ. ITEM	PART NO.	DESCRIPTION	SYMBOL		
										THE TECHNICAL MATERIEL CORP. MAMARONECK, NEW YORK			
B	/	SAOA IRIDITE WAS S101 CAUSTIC DIP	12-8 59	1001			EMN		.051 THICK STOCK SIZE	SCREEN, SPEAKER			
A	-	1/4 NOTCH WAS 1/8	5/1/59	946					ALUMINUM				
TOLERANCES								MATERIAL					
DEC. DIM. \pm			SCALE: CRO					5052-H32		CPO	are	HDe	Alu
FRAC. DIM. \pm 1/64			MAXIMUM ALLOWABLE TOLERANCES HAVE BEEN DETERMINED AND ANY DEVIATIONS WILL BE CAUSE FOR REJECTION. REMOVE ALL BURRS AND SHARP EDGES					TYPE & TEMPER		HEATTREAT. SPEC.	DRAWN	CHECKED	FINAL APPROVAL
ANGULAR DIM. \pm								SAOA-1/2Z IRIDITE					
								FINISH & SPEC. NO.		ELEC. DES. APP		MECH. DES. APP	

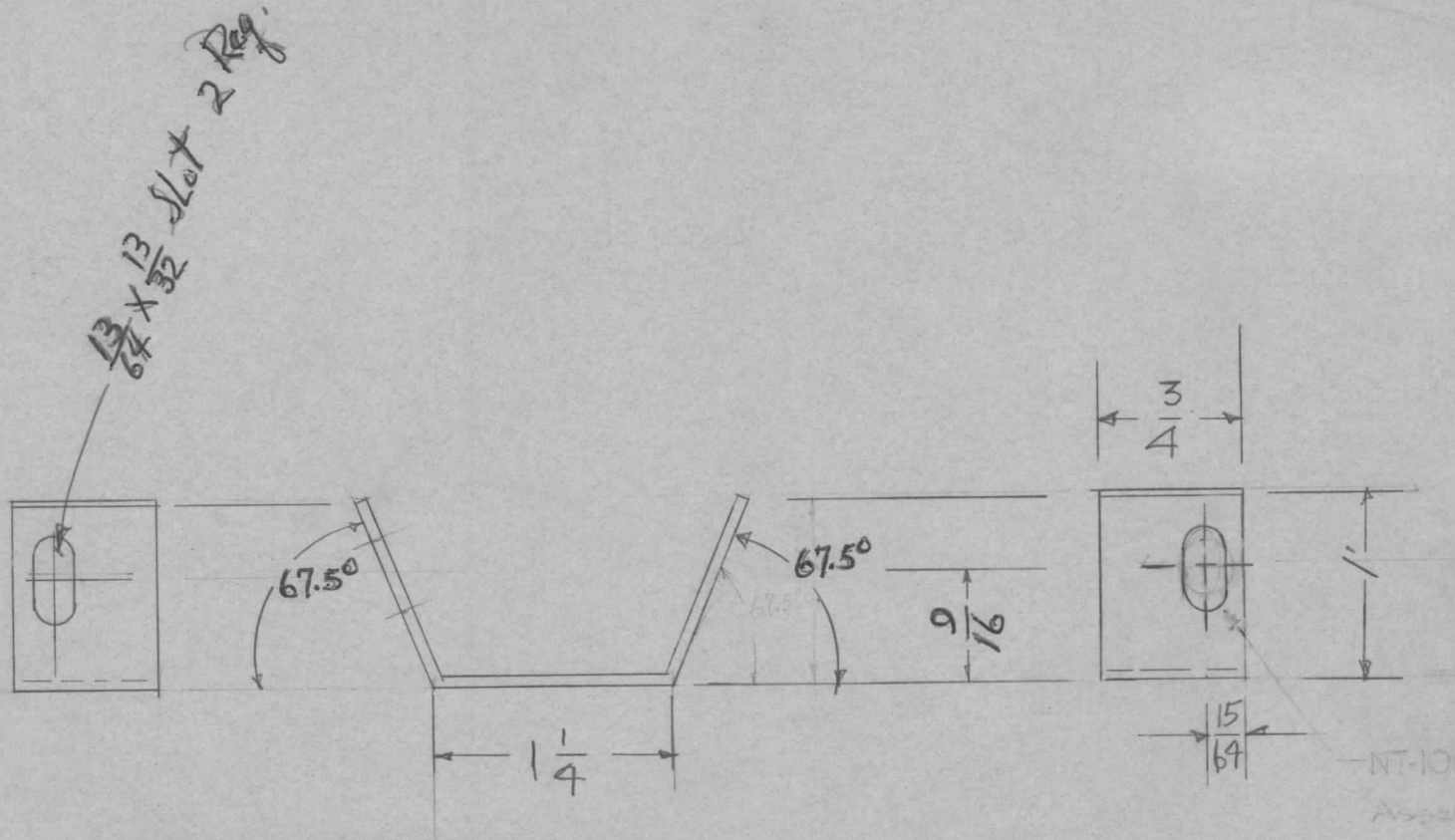
REQ. PER. UNIT	USED ON			MS-1735	A
	MODEL	ASSY. NO.	DATE		
2	UTD-2		4-22-59		



A - $\frac{3}{16}$ (.187) DIA. HOLE 2 REQ.
 B - $\frac{1}{4}$ (.250) DIA. HOLE 1 REQ.

ISSUE	ITEM	CHANGED FROM	DATE	CH. NO.	DRAFTS	CHECKER	ENG. APP.	REQ. ITEM	PART NO.	DESCRIPTION	SYMBOL	
										THE TECHNICAL MATERIEL CORP. MAMARONECK, NEW YORK		
										SPACER, LATCH		
A	1	5404-IRIDITE WAS 5101 CAUSTIC DIP	12-8 59	1001			EMN					
TOLERANCES			SCALE: CP					5052-H32		DRAWN: H.L. CHECKED: H.L. FINAL APPROVAL: H.L.		
DEC. DIM. ± FRAC. DIM. ± 1/64 ANGULAR DIM. ±			MAXIMUM ALLOWABLE TOLERANCES HAVE BEEN DETERMINED AND ANY DEVIATIONS WILL BE CAUSE FOR REJECTION. REMOVE ALL BURRS AND SHARP EDGES					3404 YEL IRIDITE		ELEC. DES. APP: MECH. DES. APP: MS-1735 A		

REQ. PER UNIT	USED ON			MS-1745 B
	MODEL	ASS'Y. NO.	DATE	
	CON			



UNLESS OTHERWISE SPECIFIED
DIMENSIONS ARE IN INCHES AND INCLUDE
CHEMICALLY APPLIED OR PLATED FINISHES

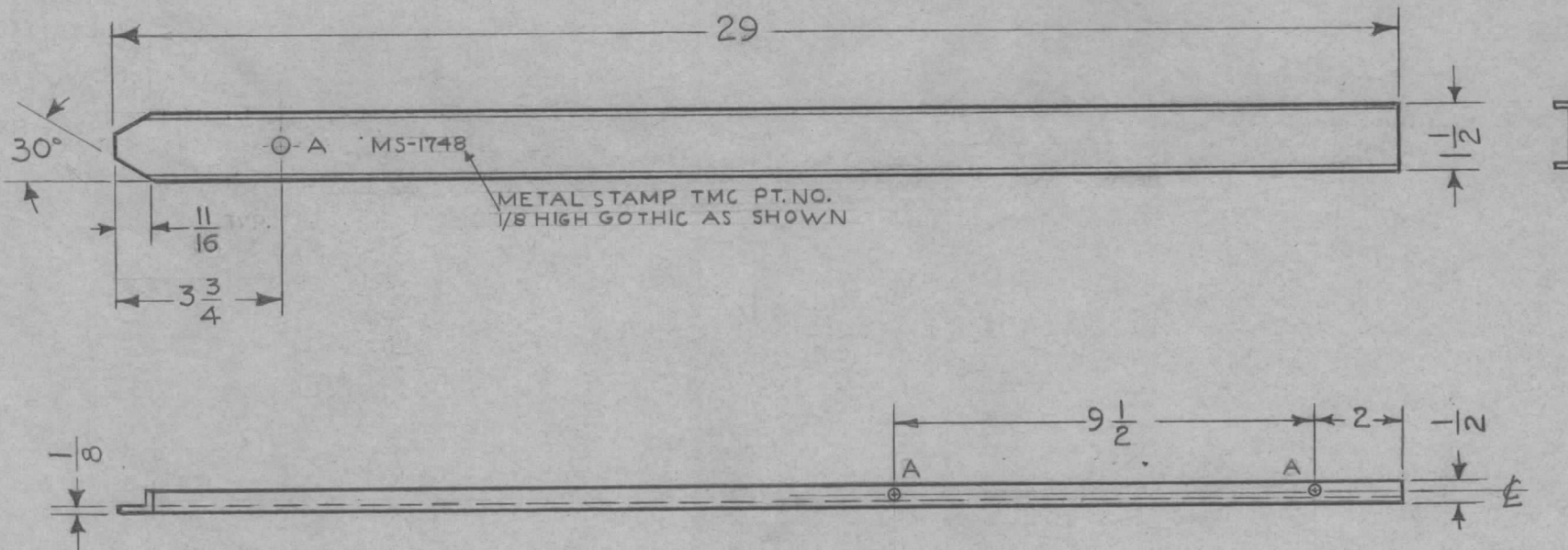
DECIMALS	TOLERANCES	FRACTIONS
.X ± .05		± 1/64
.XX ± .01		ANGLES
.XXX ± .005		± 0° 30'

FINISH NOTE:
S371-DEGRADE
S114-ZINC CHROM. PRIMER
S520-BLU/GRY SMOOTH POLYURETHANE

ISSUE	ITEM	CHANGED FROM	DATE	CH. NO.	DRAFTS	CHECKER	ENG. APP.	REQ. ITEM	PART NO.	DESCRIPTION	SYMBOL	
								16 Gauge		THE TECHNICAL MATERIEL CORP. MAMARONECK, NEW YORK		
B		S520 WAS S220 S114 & S371 DEL.	7-20-67	18421	440		OP	STOCK SIZE		45° FRONT NUT ANCHOR		
A	1	FINISH WAS CAD. PLATE	7-28-64	11951	SRG			mild steel				
TOLERANCES								MATERIAL		DRAWN		
SCALE: -1-1204			MAXIMUM ALLOWABLE TOLERANCES HAVE BEEN DETERMINED AND ANY DEVIATIONS WILL BE CAUSE FOR REJECTION. REMOVE ALL BURRS AND SHARP EDGES					HEAT TREAT. SPEC.		CHECKED		FINAL APPROVAL
DEC. DIM. ±								TYPE & TEMPER		DRAWN		MECH. DES. APP.
FRAC. DIM. ±								S520 BLU/GRY TEX VINYL				ELEC. DES. APP.
ANGULAR DIM. ±								FINISH & SPEC. NO.				

REQ. PER UNIT	USED ON			MS-1748	B
	MODEL	ASS'Y. NO.	DATE		
	CONSOLE		8-9-61		

A-13/64 DIA. HOLE - 5 REQ'D
B-13/64 DIA.



OPPOSITE SIDE SAME

UNLESS OTHERWISE SPECIFIED
DIMENSIONS ARE IN INCHES AND INCLUDE
CHEMICALLY APPLIED OR PLATED FINISHES

DECIMALS	TOLERANCES	FRACTIONS
.X ± .05		± 1/64
.XX ± .01		ANGLES
.XXX ± .005		± 0° 30'

CUT HERE
GUARANTEED
2-66

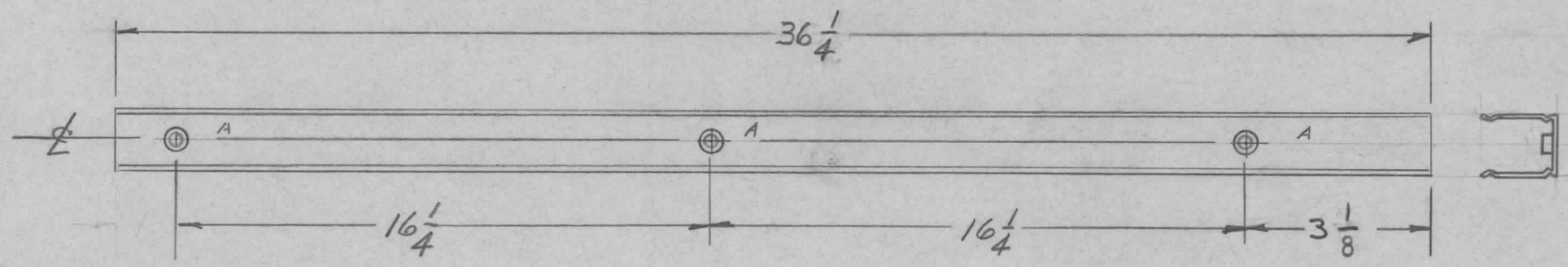
ISSUE	ITEM	CHANGED FROM	DATE	CH. NO.	DRAFTS	CHECKER	ENG. APP.	REQ. ITEM	PART NO.	DESCRIPTION	SYMBOL		
									1/8 THICK.	THE TECHNICAL MATERIEL CORP. MAMARONECK, NEW YORK	BRACIBRACKET, DESK		
									STOCK SIZE				
									CHANNEL ALUMINUM				
									MATERIAL				
									6063-T5	DIE # 4300	G.D.L.		
									TYPE & TEMPER	HEAT TREAT. SPEC.	DRAWN	CHECKED	FINAL APPROVAL
									S 404 - YEL. IRIDITE				
									FINISH & SPEC. NO.	ELEC. DES. APP	MECH. DES. APP	MS-1748	B

DEC. DIM. ±
FRAC. DIM. ±
ANGULAR DIM. ±

SCALE:
MAXIMUM ALLOWABLE TOLERANCES HAVE
BEEN DETERMINED AND ANY DEVIATIONS
WILL BE CAUSE FOR REJECTION.
REMOVE ALL BURRS AND SHARP EDGES

REQ. PER. UNIT	USED ON			MS-1754	B
	MODEL	ASS'Y. NO.	DATE		
1	RAK-7-8	A-1684	4-29-59		

A - .191 - 194 Dia. Hole
 For NT-129-632-3 3 REQ.



UNLESS OTHERWISE SPECIFIED
 DIMENSIONS ARE IN INCHES AND INCLUDE
 CHEMICALLY APPLIED OR PLATED FINISHES

DECIMALS	FRACTIONS
.X ± .05	± 1/64
.XX ± .01	ANGLES
.XXX ± .005	± 0° 30'

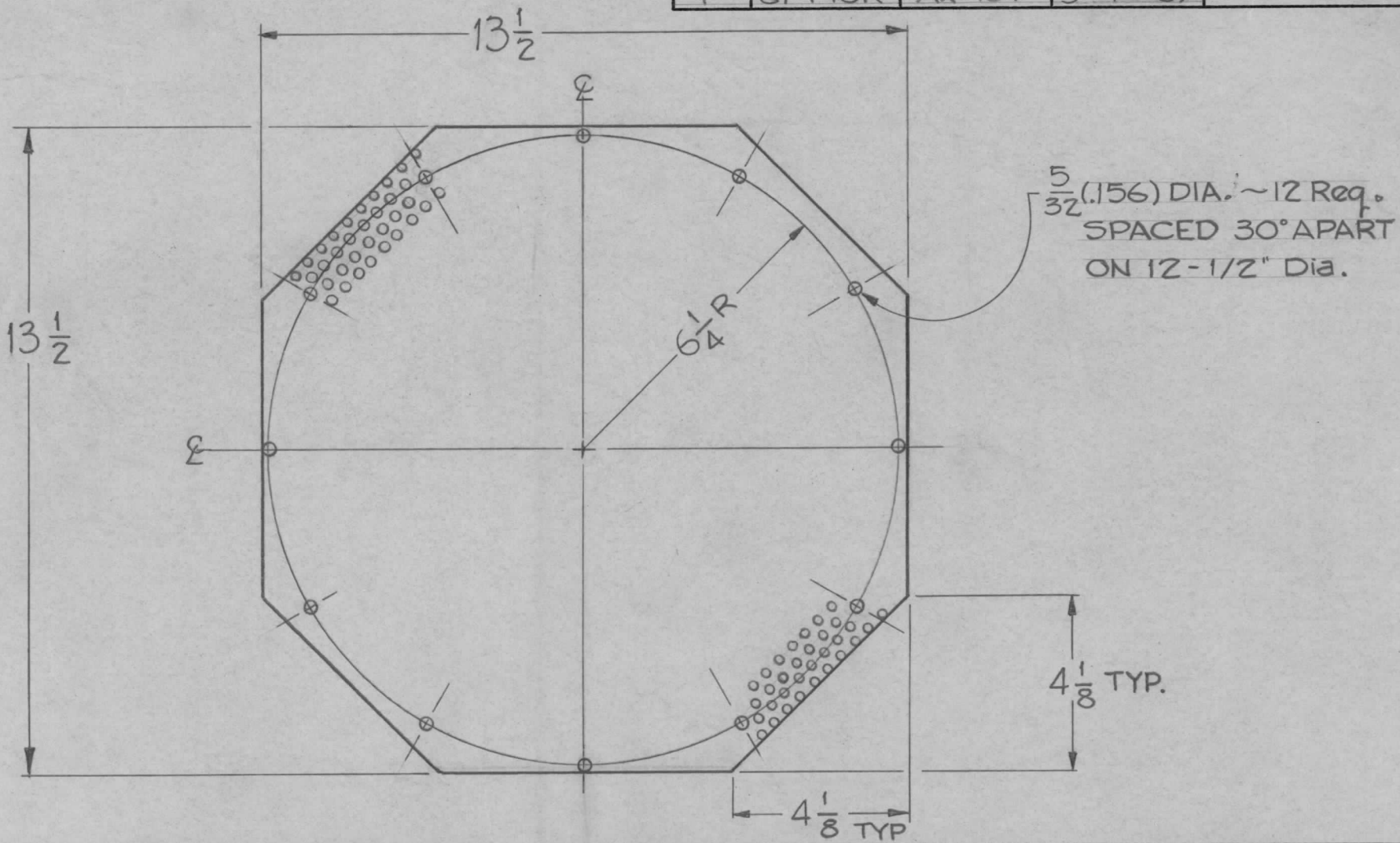
TOLERANCES

CUT HERE
 GUARANTEED
 2-66

REF. TMC # PO-160

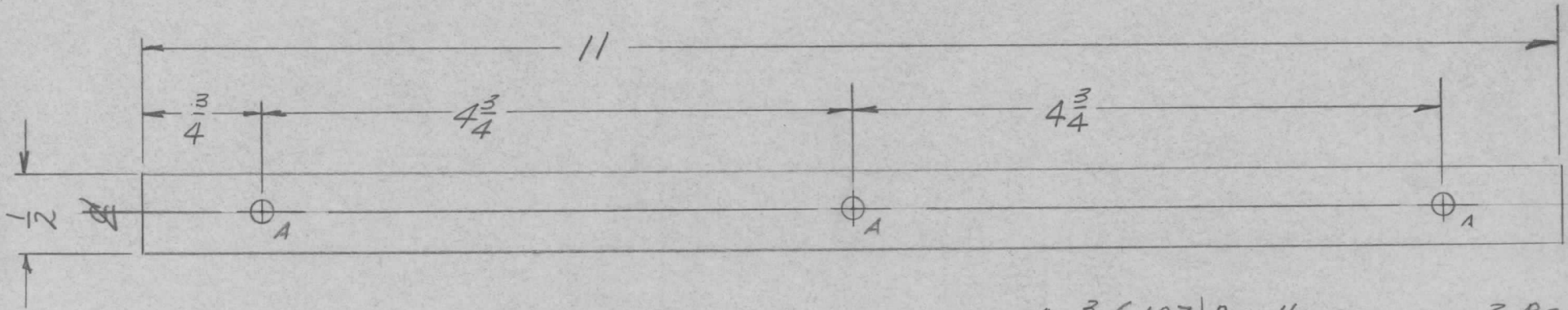
REQ.	ITEM	PART NO.	DESCRIPTION				SYMBOL
		STOCK SIZE	THE TECHNICAL MATERIEL CORP. MAMARONECK, NEW YORK				
B			A.C. STRIP				
A							
ISSUE	ITEM	CHANGED FROM	DATE	CH. NO.	DRAFTS	CHECKER	ENG. APP.
		TOLERANCES	SCALE: <i>CPD</i>				
		DEC. DIM. ±	MAXIMUM ALLOWABLE TOLERANCES HAVE BEEN DETERMINED AND ANY DEVIATIONS WILL BE CAUSE FOR REJECTION. REMOVE ALL BURRS AND SHARP EDGES				
		FRAC. DIM. ±					
		ANGULAR DIM. ±					
			TYPE & TEMPER	HEAT TREAT. SPEC.	DRAWN	CHECKED	FINAL APPROVAL
			FINISH & SPEC. NO.	ELEC. DES. APP.	MECH. DES. APP.	MS-1754	B

REQ. PER. UNIT	USED ON			MS-1755
	MODEL	ASS'Y. NO.	DATE	
1	GPT 10K	AX-181	5-1-59	



ISSUE	ITEM	CHANGED FROM	DATE	CH. NO.	DRAFTS	CHECKER	ENG. APP.	REQ. ITEM	PART NO.	DESCRIPTION	SYMBOL			
								0064		THE TECHNICAL MATERIEL CORP.				
								STOCK SIZE		MAMARONECK, NEW YORK				
								ALUMINUM		COVER, BOTTOM				
								MATERIAL		(CENTER SHIELD)				
								5052-H32		J.C. BIELE				
								TYPE & TEMPER	HEATTREAT. SPEC.	DRAWN	CHECKED			
								S-404 IRIDITE			FINAL APPROVAL			
								FINISH & SPEC. NO.		ELEC. DES. APP	MECH. DES. APP			
TOLERANCES			SCALE:								MS-1755			
DEC. DIM. ±			MAXIMUM ALLOWABLE TOLERANCES HAVE BEEN DETERMINED AND ANY DEVIATIONS WILL BE CAUSE FOR REJECTION. REMOVE ALL BURRS AND SHARP EDGES											
FRAC. DIM. ± 1/64														
ANGULAR DIM. ±														

REQ. PER. UNIT	USED ON			MS-1756	A
	MODEL	ASS'Y. NO.	DATE		
2	UTO-2		5-4-59		



A - $\frac{3}{16}$ (.187) DIA. HOLE - 3 REQ.

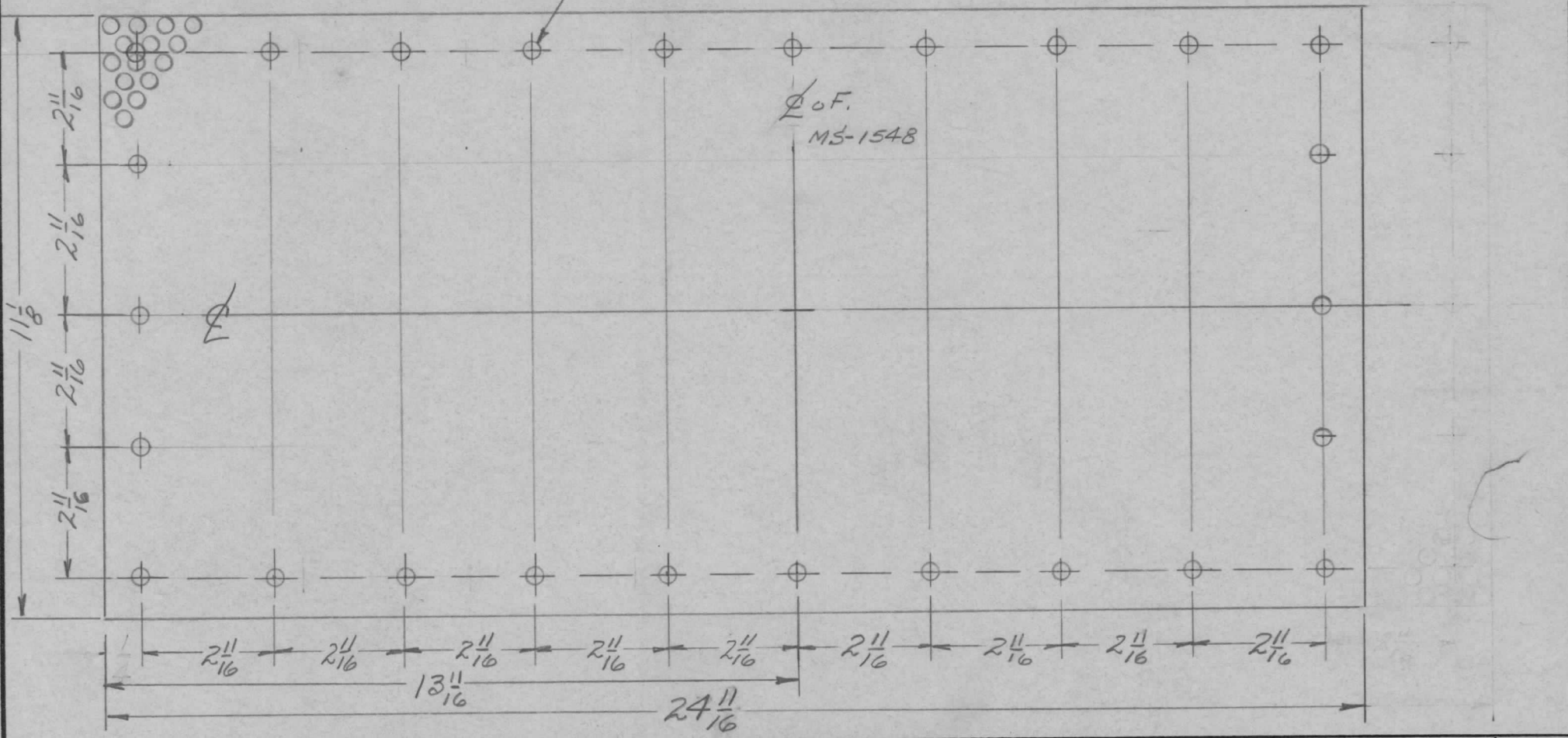
NOTE: TO BE USED IF NECESSARY

REQ.	ITEM	PART NO.	DESCRIPTION				SYMBOL
		.064 THICK	THE TECHNICAL MATERIEL CORP.				
		STOCK SIZE	MAMARONECK, NEW YORK				
		ALUMINUM	SHIM, SLIDE				
		MATERIAL					
A	1	5909-IRIDITE WAS SID/CAUSTIC DIP	2-8-59	1001	J	EMN	
ISSUE	ITEM	CHANGED FROM	DATE	CH. NO.	DRAFTS	CHECKER	ENG. APP.
TOLERANCES			SCALE: $\frac{1}{2}$				
DEC. DIM. \pm			MAXIMUM ALLOWABLE TOLERANCES HAVE BEEN DETERMINED AND ANY DEVIATIONS WILL BE CAUSE FOR REJECTION. REMOVE ALL BURRS AND SHARP EDGES				
FRAC. DIM. \pm $\frac{1}{64}$							
ANGULAR DIM. \pm							
TYPE & TEMPER		HEAT TREAT. SPEC.	DRAWN	CHECKED	FINAL APPROVAL		
S404 YEL IRIDITE					MS-1756 A		
FINISH & SPEC. NO.		ELEC. DES. APP	MECH. DES. APP				

Perforations -.150 Dia Holes
on 3/16 Staggered P's

REQ. PER. UNIT	USED ON			MS-1757	A
	MODEL	ASSY. NO.	DATE		
1	GPT-10K	MAIN FRAME	5-5-59		

(26) 3/16 DIA. HOLES -

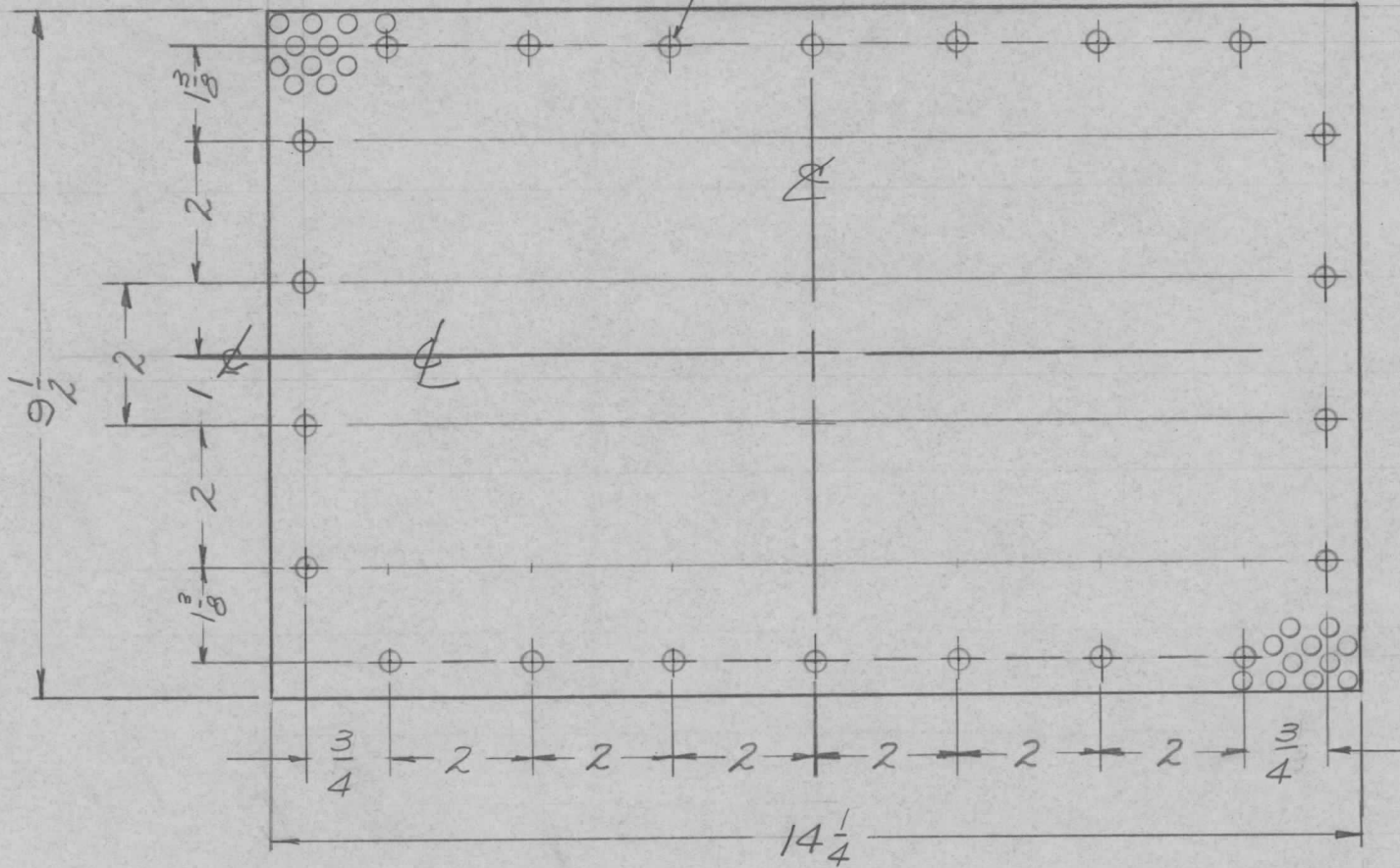


REQ.	ITEM	PART NO.	DESCRIPTION			SYMBOL	
			THE TECHNICAL MATERIEL CORP.				
			MAMARONECK, NEW YORK				
			PERFORATED SHEET				
			TOP SHIELD, R.F. DECK				
A	3/16 HOLES QUIN - WAS 28 24 11/16 WAS 27 3/8	6/8/59					
ISSUE	ITEM	CHANGED FROM	DATE	CH. NO.	DRAFTS	CHECKER	ENG. APP.
TOLERANCES			SCALE: <i>1:1</i>				
DEC. DIM. ±			MAXIMUM ALLOWABLE TOLERANCES HAVE BEEN DETERMINED AND ANY DEVIATIONS WILL BE CAUSE FOR REJECTION. REMOVE ALL BURRS AND SHARP EDGES				
FRAC. DIM. ±							
ANGULAR DIM. ±							
		5052-H32	5052-H32		DRAWN		CHECKED
		5404 IRIDITE	5404 IRIDITE		DRAWN		CHECKED
		FINISH & SPEC. NO.	FINISH & SPEC. NO.		ELEC. DES. APP.		MECH. DES. APP.
					MS-1757		A

Perforations - .150 Dia. Holes
on 3/16 staggered \times s

REQ. PER. UNIT	USED ON			MS-1758
	MODEL	ASS'Y. NO.	DATE	
2	GPT-10K	MAIN FRAME	5-5-59	

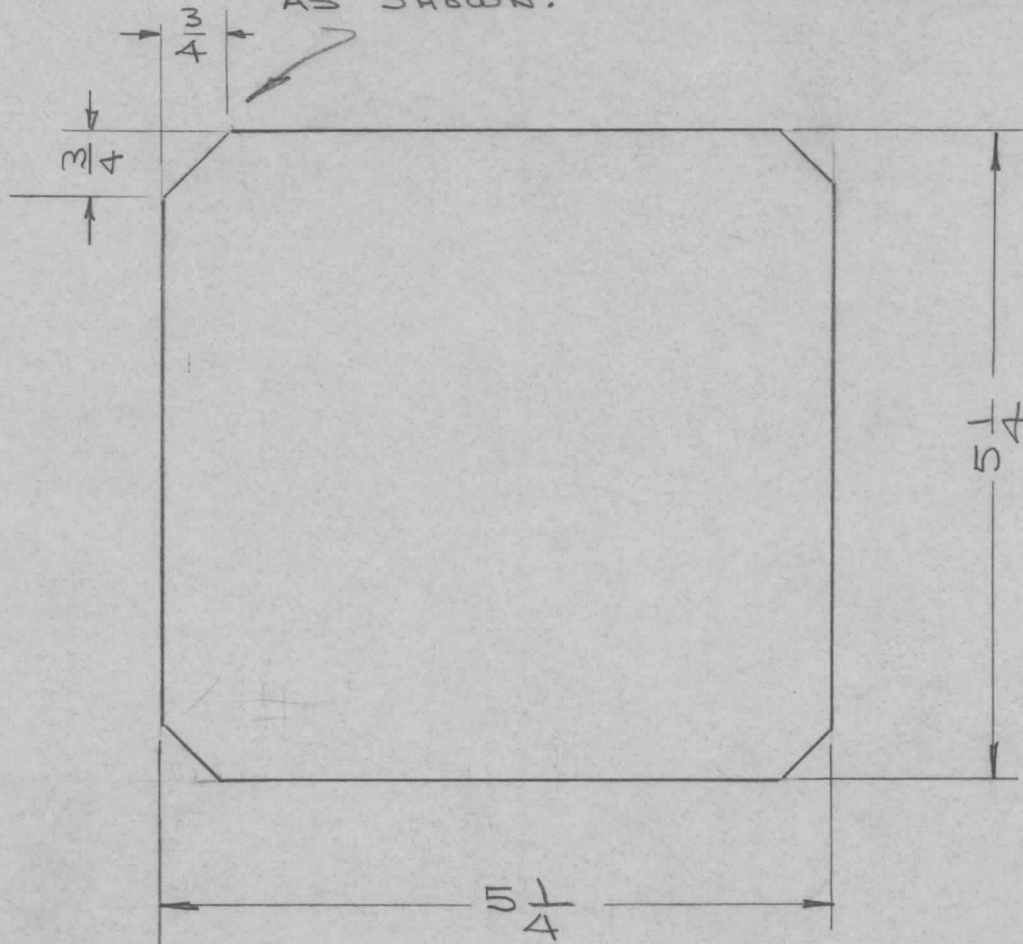
(22) 3/16 DIA. HOLE



ISSUE	ITEM	CHANGED FROM	DATE	CH. NO.	DRAFTS	CHECKER	ENG. APP.	REQ.	ITEM	PART NO.	DESCRIPTION	SYMBOL					
										.064 THICK	THE TECHNICAL MATERIEL CORP. MAMARONECK, NEW YORK PERFORATED SHEET R.F. DECK						
										STOCK SIZE							
										ALUMINUM							
										MATERIAL							
								5052-H32									
								5904 IRIDITE									
TOLERANCES			SCALE: <i>1/4</i>					TYPE & TEMPER		HEAT TREAT. SPEC.	DRAWN	CHECKED	FINAL APPROVAL				
DEC. DIM. \pm			MAXIMUM ALLOWABLE TOLERANCES HAVE BEEN DETERMINED AND ANY DEVIATIONS WILL BE CAUSE FOR REJECTION. REMOVE ALL BURRS AND SHARP EDGES					FINISH & SPEC. NO.		ELEC. DES. APP	MECH. DES. APP	MS-1758					
FRAC. DIM. \pm <i>1/64</i>																	
ANGULAR DIM. \pm																	

REQ. PER. UNIT	USED ON			MS-1760	A
	MODEL	ASS'Y. NO.	DATE		
1	RFB-1		5-5-		
	RFC-1		11-22-60		

NOTE
CUT ALL CORNERS
AS SHOWN.



UNLESS OTHERWISE SPECIFIED
DIMENSIONS ARE IN INCHES AND INCLUDE
CHEMICALLY APPLIED OR PLATED FINISHES

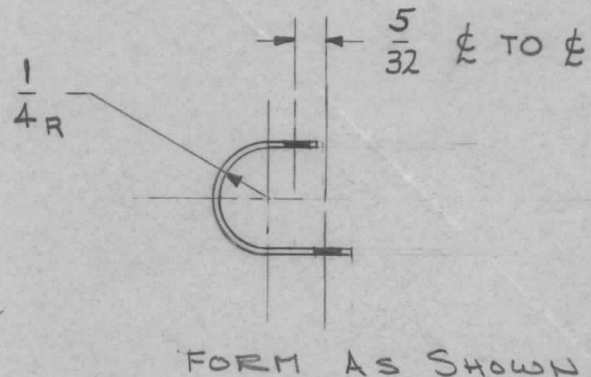
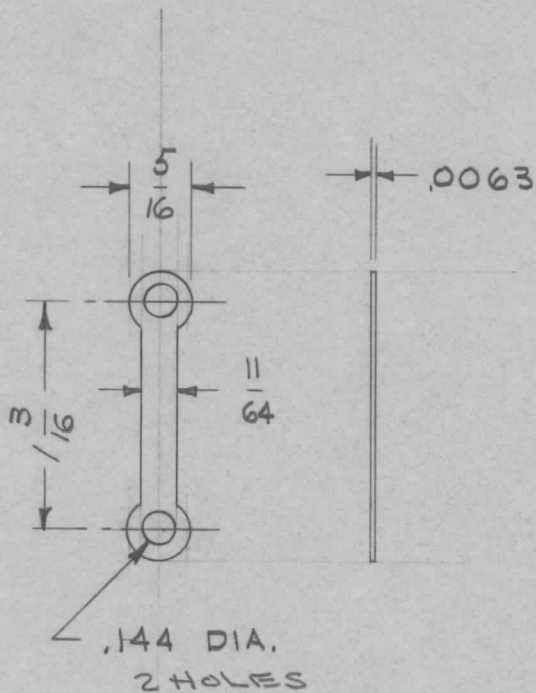
DECIMALS	FRACTIONS
.X ± .05	± 1/64
.XX ± .01	ANGLES ± 0° 30'
.XXX ± .005	

TOLERANCES

REF: USED WITH MS-2497

ISSUE	ITEM	CHANGED FROM	DATE	CH. NO.	DRAFTS	CHECKER	ENG. APP.	REQ. ITEM	PART NO.	DESCRIPTION	SYMBOL	
										THE TECHNICAL MATERIEL CORP. MAMARONECK, NEW YORK		
A	2	ON STOCK SIZE ".010 WIRE" ADDED ON TYPE & TEMP. "18 X 18 MESH" ADDED ON FINIS & SPEC. "S404 YEL. IRIDITE ADDED"	5-9-62	6688	GDL	<i>[Signature]</i>	<i>[Signature]</i>			SCREEN, SHIELD, TOP COVER		
	1	TITLE WAS (COVER SCREENING RF SHIELD) - REF. WAS RF. MS-1639										
TOLERANCES			SCALE:					18 X 18 MESH			<i>[Signature]</i>	<i>[Signature]</i>
DEC. DIM. ± FRAC. DIM. ± ANGULAR DIM. ±			MAXIMUM ALLOWABLE TOLERANCES HAVE BEEN DETERMINED AND ANY DEVIATIONS WILL BE CAUSE FOR REJECTION. REMOVE ALL BURRS AND SHARP EDGES					TYPE & TEMPER	HEAT TREAT. SPEC.	DRAWN	CHECKED	FINAL APPROVAL
								S404 YELLOW IRIDITE			<i>[Signature]</i>	MS-1760 A
								FINISH & SPEC. NO.	ELEC. DES. APP	MECH. DES. APP		

REQ. PER. UNIT	USED ON			MS-1769 A
	MODEL	ASS'Y. NO.	DATE	
			4 22 59	



UNLESS OTHERWISE SPECIFIED
DIMENSIONS ARE IN INCHES AND INCLUDE
CHEMICALLY APPLIED OR PLATED FINISHES

DECIMALS	FRACTIONS
.X ± .05	± 1/64
.XX ± .01	ANGLES
.XXX ± .005	± 0° 30'

TOLERANCES

CUT HERE
GUARANTEED
2-66

REQ.	ITEM	PART NO.	DESCRIPTION	SYMBOL
		.0063	THE TECHNICAL MATERIEL CORP.	
		STOCK SIZE	MAMARONECK, NEW YORK	
		BERYLLIUM COPPER	FLEXIBLE STRAP CONNECTOR	
		MATERIAL		
		2 HRS AT 600°F AIR COOLED		
		TYPE & TEMPER	DRAWN	CHECKED
		HEAT TREAT. SPEC.		FINAL APPROVAL
		S105 CADMIUM PLATE		
		FINISH & SPEC. NO.	ELEC. DES. APP.	MECH. DES. APP.
				MS-1769 A

A S105 CAD. PLATE WAS TIN ENDS 62365 14304 D.V.V. JCB

ISSUE ITEM CHANGED FROM DATE CH. NO. DRAFTS CHECKER ENG. APP.

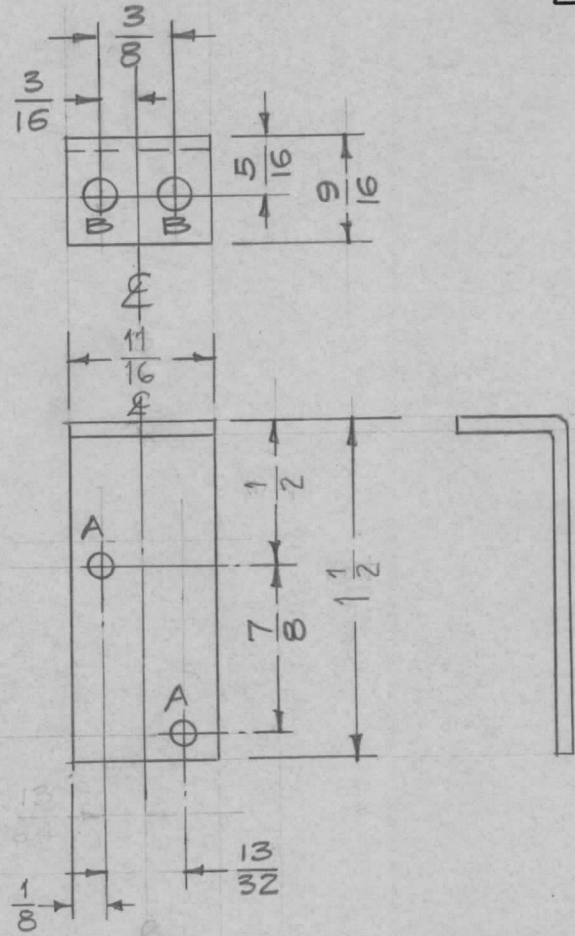
TOLERANCES SCALE:

DEC. DIM. ±
FRAC. DIM. ±
ANGULAR DIM. ±

MAXIMUM ALLOWABLE TOLERANCES HAVE BEEN DETERMINED AND ANY DEVIATIONS WILL BE CAUSE FOR REJECTION. REMOVE ALL BURRS AND SHARP EDGES

REQ. PER. UNIT	USED ON			MS-1785	A
	MODEL	ASS'Y. NO.	DATE		
1	PS-5		6-15-59		

(PAL-1K)



A - $\frac{1}{8}$ (.125) D. 2 Req.

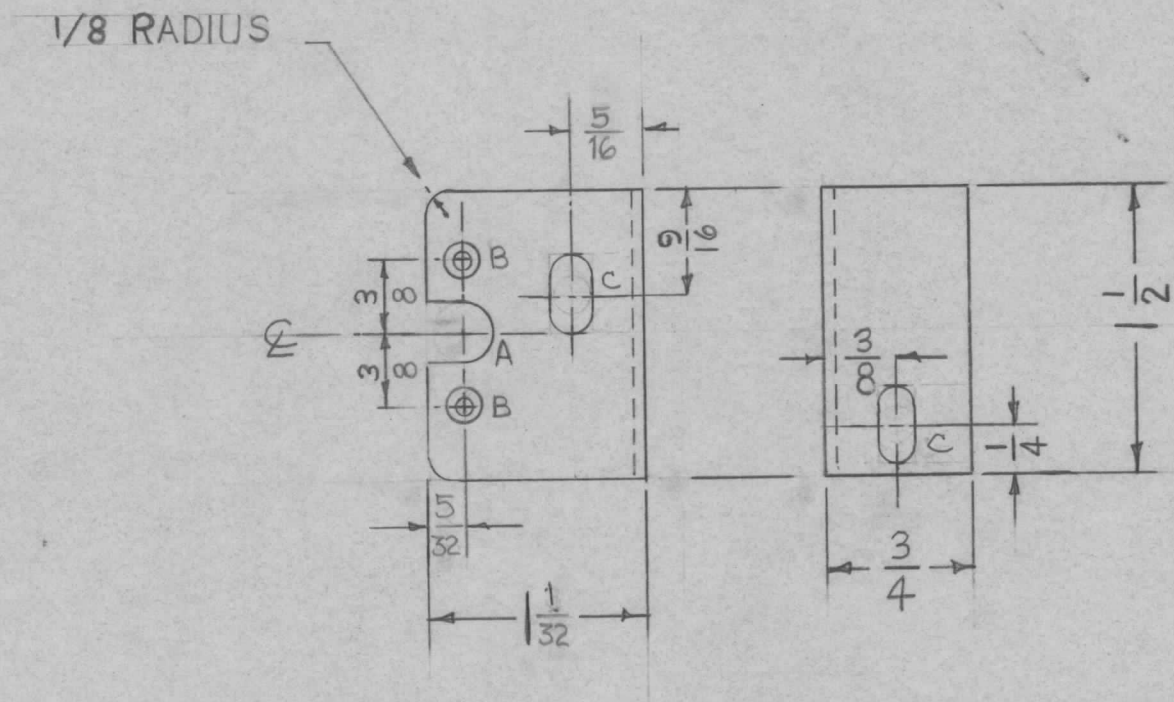
B - $\frac{11}{64}$ (.171) D. 2 Req.

REQ.	ITEM	PART NO.	DESCRIPTION			SYMBOL
		.081 THK.	THE TECHNICAL MATERIEL CORP.			
		STOCK SIZE	MAMARONECK, NEW YORK			
		Aluminum	BRACKET, SWITCH MTG.			
		MATERIAL				
A	4 3 1	11/16 WAS 3/4 1/8 WAS 3/4 1-1/2 WAS 1-3/4	8/23/59	1207	DM	<i>[Signature]</i>
ISSUE	ITEM	CHANGED FROM	DATE	CH. NO.	DRAFTS	CHECKER
TOLERANCES			SCALE: Full (Do Not Scale)			
DEC. DIM. ±			MAXIMUM ALLOWABLE TOLERANCES HAVE BEEN DETERMINED AND ANY DEVIATIONS WILL BE CAUSE FOR REJECTION.			
FRAC. DIM. ± 1/64			REMOVE ALL BURRS AND SHARP EDGES			
ANGULAR DIM. ±						
5052-H32			16	6/15/59		<i>[Signature]</i>
TYPE & TEMPER		HEAT TREAT. SPEC.	DRAWN	CHECKED	FINAL APPROVAL	
S404 Iridite				<i>[Signature]</i>	MS-1785	A
FINISH & SPEC. NO.		ELEC. DES. APP.	MECH. DES. APP.			

REQ. PER. UNIT	USED ON			MS-1786	B
	MODEL	ASS'Y. NO.	DATE		
1	PS-5		6-12-59		

(PAL-1K)

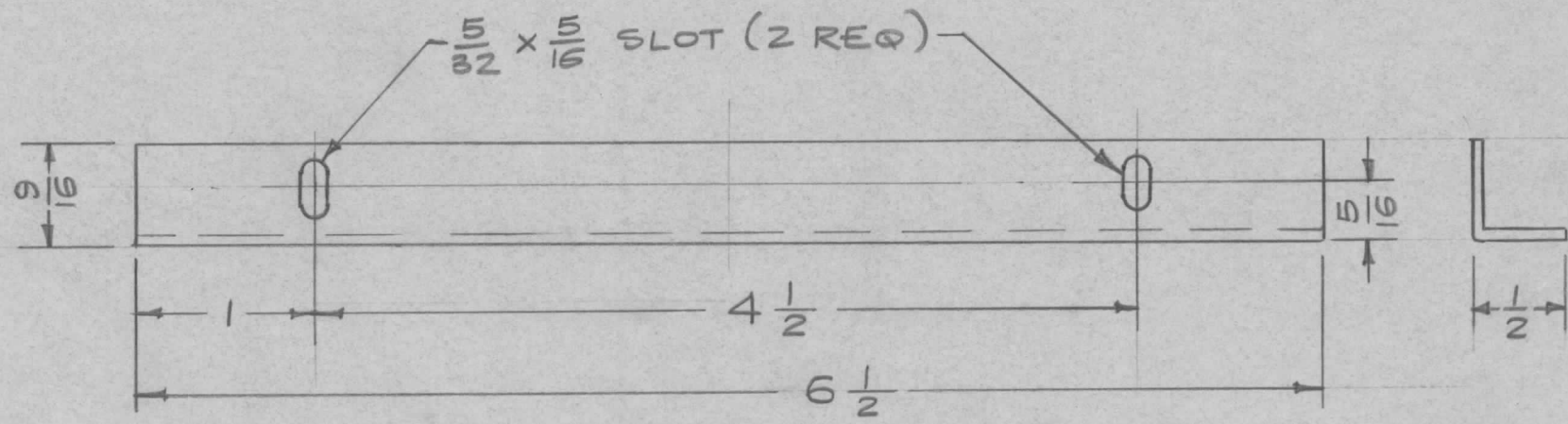
A = 5/16 (.312) D. ~ 1 REQ.
 B = DRILL & CTSK. FOR
 3/48 FL. HD. SC.
 C = 13/64 x 13/32 2 REQ.
 SLOT



ISSUE	ITEM	CHANGED FROM	DATE	CH. NO.	DRAFTS	CHECKER	ENG. APP.	REQ. ITEM	PART NO.	DESCRIPTION	SYMBOL				
									.064	THE TECHNICAL MATERIEL CORP. MAMARONECK, NEW YORK	BRACKET, DOOR LATCH				
									STOCK SIZE						
B	2	C-HOLE WAS 13/64 DIA.	2-19-62	6339	G.S.	<i>[Signature]</i>	<i>[Signature]</i>		ALUMINUM						
	1	1-1/32 DIM WAS 1-3/32													
A	3	5/32 WAS 3/16	8/24/59	1205	DM	<i>[Signature]</i>	<i>[Signature]</i>								
	2	1-3/32 WAS 1-1/8													
	1	5/16 WAS 3/8													
TOLERANCES			SCALE: FULL (Do NOT Scale)					5052-H32			<i>[Signature]</i>	<i>[Signature]</i>			
DEC. DIM. ±			MAXIMUM ALLOWABLE TOLERANCES HAVE BEEN DETERMINED AND ANY DEVIATIONS WILL BE CAUSE FOR REJECTION. REMOVE ALL BURRS AND SHARP EDGES					TYPE & TEMPER	HEATTREAT. SPEC.	DRAWN	CHECKED	FINAL APPROVAL			
FRAC. DIM. ± 1/64								S404-IRIDITE							
ANGULAR DIM. ±								FINISH & SPEC. NO.	ELEC. DES. APP	MECH. DES. APP					
										MS-1786	B				

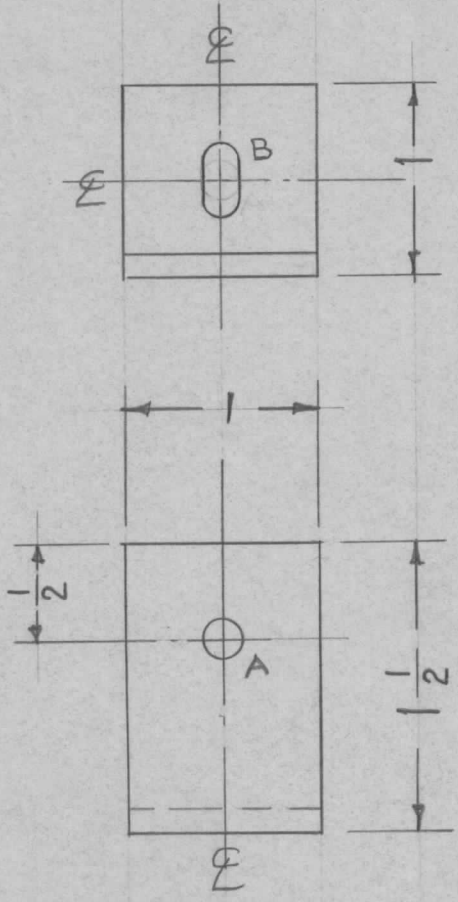
REQ. PER UNIT	USED ON			MS-1787
	MODEL	ASS'Y. NO.	DATE	
1	PS-5		6-12-59	

(PAL-1K)



ISSUE	ITEM	CHANGED FROM	DATE	CH. NO.	DRAFTS	CHECKER	ENG. APP.	REQ. ITEM	PART NO.	DESCRIPTION	SYMBOL
									.051 THK	THE TECHNICAL MATERIEL CORP.	
									STOCK SIZE	MAMARONECK, NEW YORK	
									Aluminum	BRACKET, FILTER RETAINING	
									MATERIAL		
								5052-H32		16 ⁴ /12/59	<i>amb</i>
								TYPE & TEMPER	HEATTREAT. SPEC.	DRAWN	CHECKED
								5404 Iridite		<i>amb</i>	FINAL APPROVAL
								FINISH & SPEC. NO.		ELEC. DES. APP	MECH. DES. APP
											MS-1787

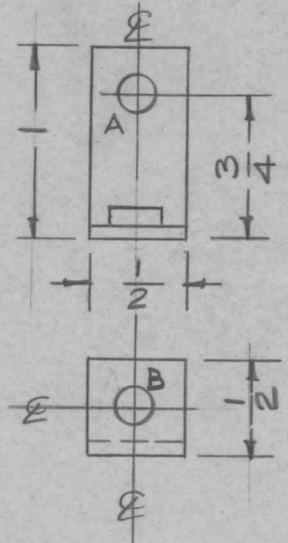
REQ. PER. UNIT	USED ON			MS-1789	A
	MODEL	ASS'Y. NO.	DATE		
2	PS-5		6-12-59		



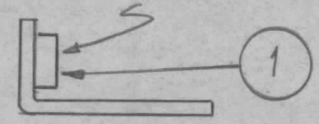
A - $\frac{13}{64}$ (.203) D. 1 Req.
 B - $\frac{13}{64} \times \frac{13}{32}$ SLOT - 1 REQ.

ISSUE	ITEM	CHANGED FROM	DATE	CH. NO.	DRAFTS	CHECKER	ENG. APP.	REQ. ITEM	PART NO.	DESCRIPTION	SYMBOL	
								1/8 THK		THE TECHNICAL MATERIEL CORP.		
								STOCK SIZE		MAMARONECK, NEW YORK		
A		CHGD QTY. "A" HOLES. ADD "B" SLOT & DIM.	8-8-66	16731	RME	<i>[Signature]</i>	<i>[Signature]</i>	Aluminum		BRACKET, RESISTOR MTG.		
TOLERANCES								5052-H32		6 ⁶ /12/59	<i>[Signature]</i> <i>[Signature]</i>	
DEC. DIM. ±			SCALE: FULL (Do Not Scale)					TYPE & TEMPER		DRAWN	CHECKED	FINAL APPROVAL
FRAC. DIM. ± 1/64			MAXIMUM ALLOWABLE TOLERANCES HAVE BEEN DETERMINED AND ANY DEVIATIONS WILL BE CAUSE FOR REJECTION. REMOVE ALL BURRS AND SHARP EDGES					5404 Iridite		<i>[Signature]</i>		MS-1789
ANGULAR DIM. ±								FINISH & SPEC. NO.		ELEC. DES. APP	MECH. DES. APP	

REQ. PER UNIT	USED ON			MS-1795	A
	MODEL	ASS'Y. NO.	DATE		
2	PS-4 (PAL-1K)		6-18-59		
6	PS-4A		7-25-61		



MOUNT AFTER FINISHING

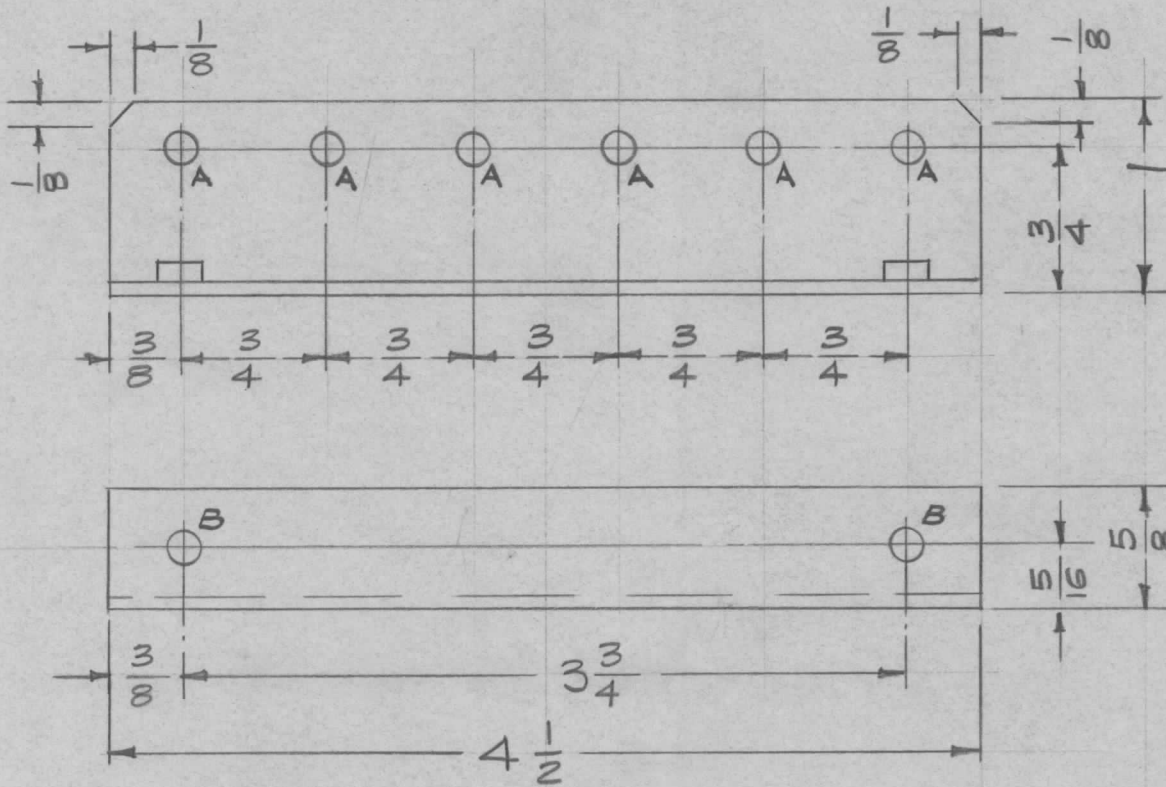


A - $\frac{3}{16}$ (.187) D. 1 Req.

B - .191 - .194 D. 1 Req.

								1	1	NT-129-632-4	NUT, ROUND, SWAGE TYPE	B					
								REQ. ITEM		PART NO.	DESCRIPTION	SYMBOL					
										.064 Thk	THE TECHNICAL MATERIEL CORP. MAMARONECK, NEW YORK	BRACKET, RESISTOR MTG., SMALL					
										STOCK SIZE							
										Aluminum							
										MATERIAL							
A	1	⊙ 'A' Hole changed to 'B' Hole.	12461	3977	P	JCS				5052-H32	16 ⁴ /18/59						
ISSUE	ITEM	CHANGED FROM	DATE	CH. NO.	DRAFTS	CHECKER	ENG. APP.			TYPE & TEMPER	CHECKED	FINAL APPROVAL					
TOLERANCES			SCALE: Full (Do Not Scale)								5404 Iridite						
DEC. DIM. ±			MAXIMUM ALLOWABLE TOLERANCES HAVE BEEN DETERMINED AND ANY DEVIATIONS WILL BE CAUSE FOR REJECTION. REMOVE ALL BURRS AND SHARP EDGES														
FRAC. DIM. ± 1/64																	
ANGULAR DIM. ±																	
										FINISH & SPEC. NO.	ELEC. DES. APP	MECH. DES. APP	MS-1795	A			

REQ. PER. UNIT	USED ON			MS-1798	A
	MODEL	ASS'Y. NO.	DATE		
Z	PS-4/PALIK		6-18-59		



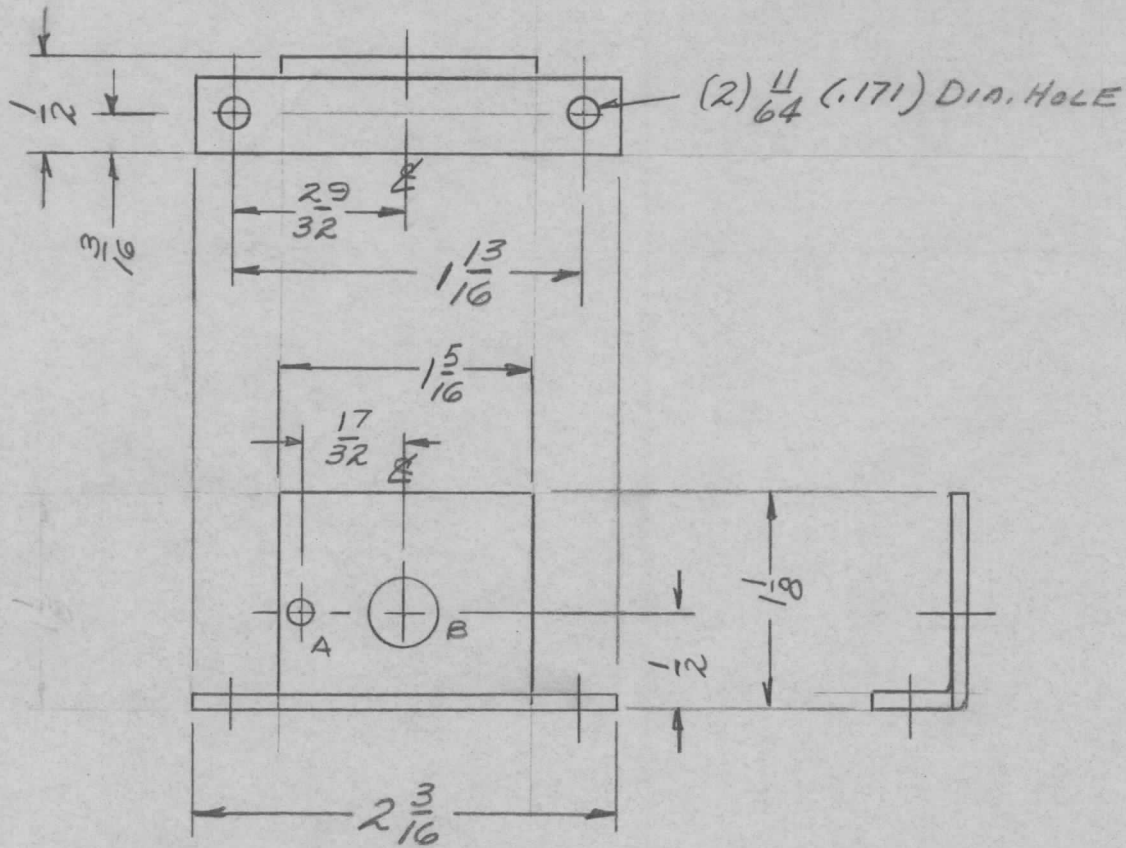
A - 11/64 (.171) D. 6 REQ
 B - .191 -.194 D. 2 REQ

MOUNT AFTER FINISHING

REF: LD-821 (1)

2		1		NT-129 0632-4		NUT, ROUND, SWAGE TYPE		B	
REQ.	ITEM	PART NO.				DESCRIPTION			SYMBOL
		.064 Thk.				THE TECHNICAL MATERIEL CORP.			
		STOCK SIZE				MAMARONECK, NEW YORK			
		Aluminum				BRACKET, RESISTOR MTG.			
		MATERIAL							
A	1	② 'A' Holes changed to 'B' Holes		24 61	3977	P	JCB		
ISSUE	ITEM	CHANGED FROM		DATE	CH. NO.	DRAFTS	CHECKER	ENG. APP.	
TOLERANCES		SCALE: Full (Do Not Scale)							
DEC. DIM. ±		MAXIMUM ALLOWABLE TOLERANCES HAVE BEEN DETERMINED AND ANY DEVIATIONS WILL BE CAUSE FOR REJECTION. REMOVE ALL BURRS AND SHARP EDGES							
FRAC. DIM. ± 1/64									
ANGULAR DIM. ±									
		5052-H32		164/19/58		JCB		APB QRS	
		TYPE & TEMPER		HEAT TREAT. SPEC.		DRAWN		CHECKED	
		S404 Iridite							
		FINISH & SPEC. NO.		ELEC. DES. APP		MECH. DES. APP		MS-1798 A	

REQ. PER. UNIT	USED ON			MS-1799	A
	MODEL	ASS'Y. NO.	DATE		
1	AX-104	IPA			



ISSUE	ITEM	CHANGED FROM	DATE	CH. NO.	DRAFTS	CHECKER	ENG. APP.	REQ. ITEM	PART NO.	DESCRIPTION	SYMBOL						
								.081 THICK STOCK SIZE		THE TECHNICAL MATERIEL CORP. MAMARONECK, NEW YORK							
								ALUMINUM MATERIAL		BRACKET, IPA BIAS POT							
A		REDRAWN ORIG.	9/8/59		arc	JL		5052-H32		OK JL	AMP						
TOLERANCES			SCALE: CVD					TYPE & TEMPER		DRAWN		CHECKED					
DEC. DIM. \pm			MAXIMUM ALLOWABLE TOLERANCES HAVE BEEN DETERMINED AND ANY DEVIATIONS WILL BE CAUSE FOR REJECTION. REMOVE ALL BURRS AND SHARP EDGES					HEAT TREAT. SPEC.		DRAWN		CHECKED					
FRAC. DIM. \pm 1/64								5404 RIDITE						AMP		MS-1799 A	
ANGULAR DIM. \pm								FINISH & SPEC. NO.		ELEC. DES. APP		MECH. DES. APP					