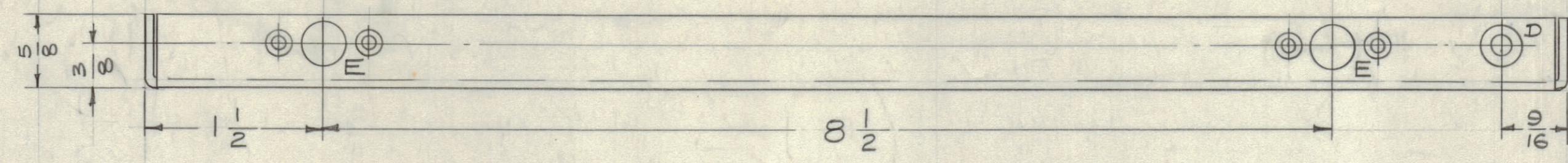
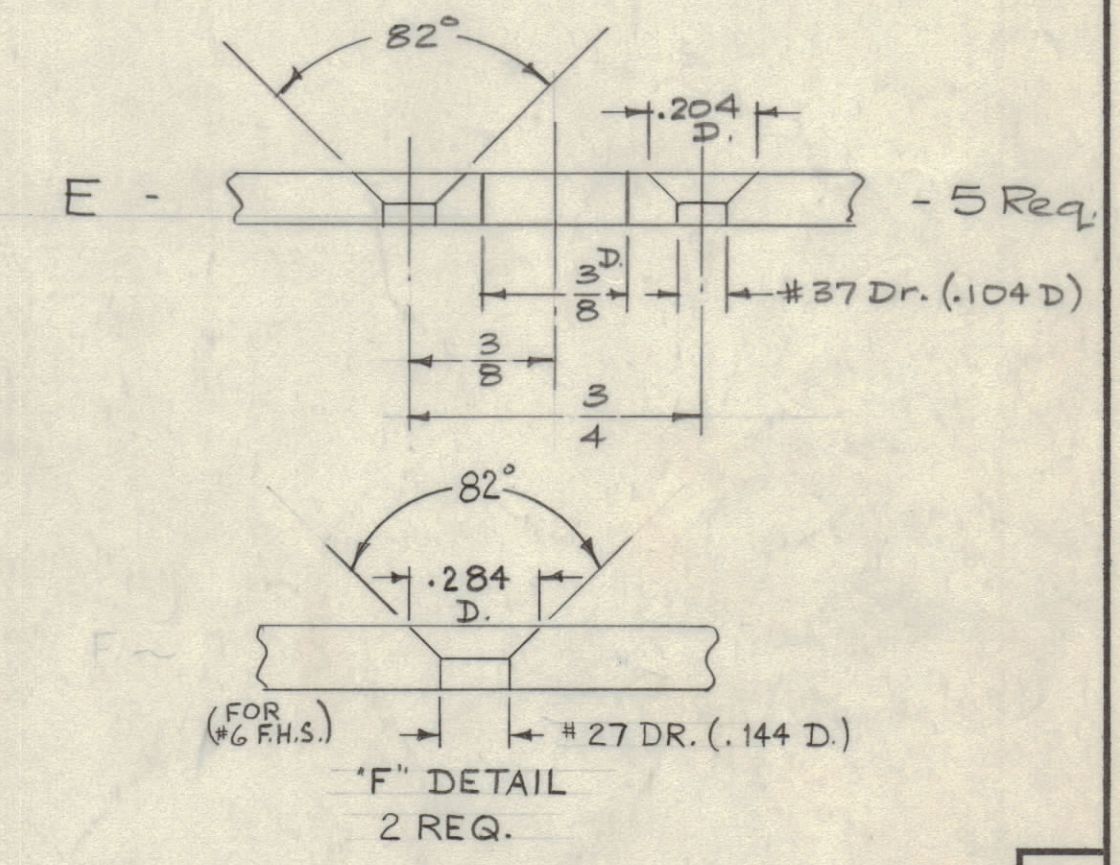
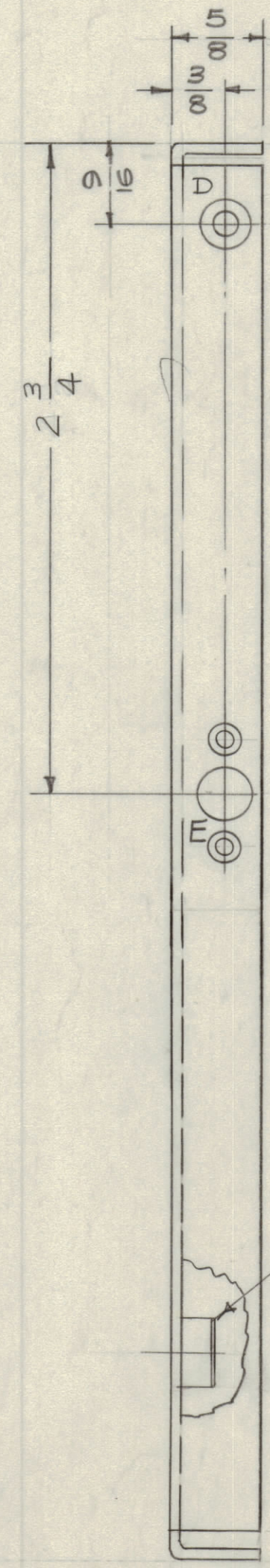
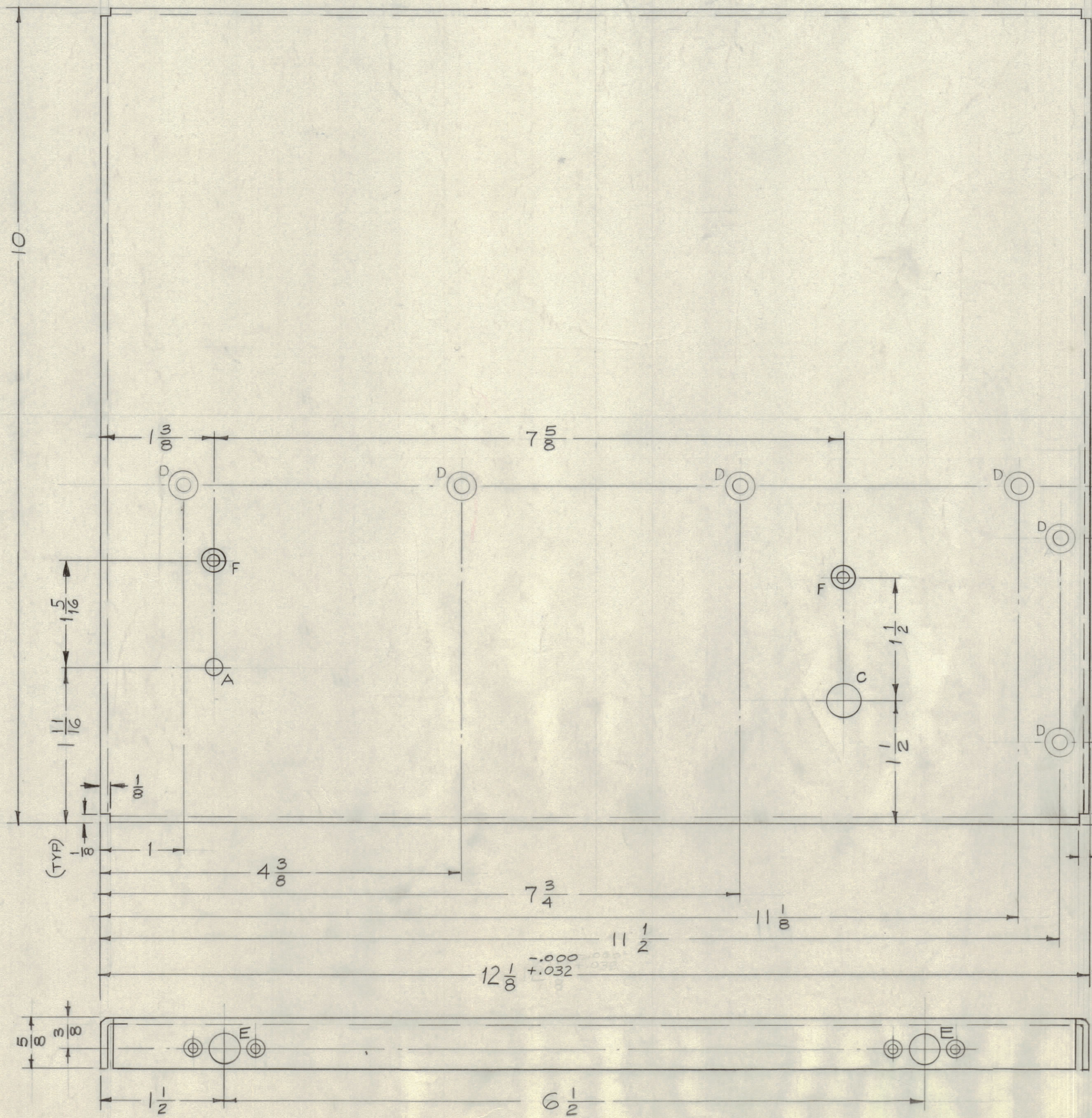
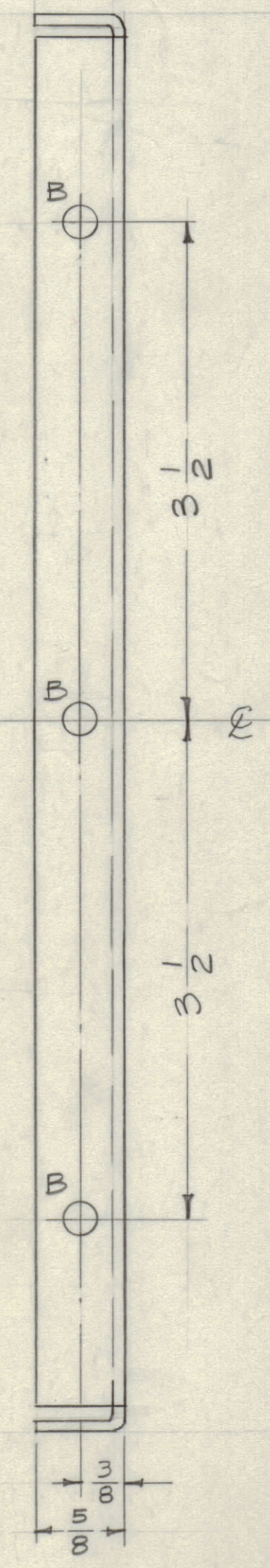


IF IT IS FOUND DESIRABLE TO CHANGE ANY TOLERANCE OR OTHER DETAIL SPECIFIED ON THIS DRAWING NOTIFY THE PURCHASER PROMPTLY.
 MAXIMUM ALLOWABLE TOLERANCES HAVE BEEN DETERMINED AND DEVIATIONS WILL BE CAUSE FOR REJECTION. REMOVE ALL BURRS AND SHARP EDGES.



- A - $\frac{13}{64}$ (.203) D. 1 Req.
- B - $\frac{15}{64}$ (.234) D. 3 Req.
- C - Z° Dr. (.413 D) 1 Req. (For NT-129-524-4)
- D - $\frac{337}{D}$ - 8 Req.
(For #8 FHS) $\frac{18}{D}$ Dr. (.169 D)
- E - $\frac{204}{D}$ - 5 Req.
 $\frac{37}{D}$ Dr. (.104 D)
- F - $\frac{284}{D}$ - 2 Req.
(For #6 FHS) $\frac{27}{D}$ Dr. (.144 D)



Mount NT-129-524-4 in "C" Hole.
1 Req.

NOTICE TO PERSONS RECEIVING THIS DRAWING
 THE TECHNICAL MATERIEL CORPORATION claims proprietary right in the material disclosed herein. This drawing is issued in confidence for engineering information only and may not be reproduced or used to manufacture anything shown herein without permission from THE TECHNICAL MATERIEL CORPORATION to the user. This drawing is loaned for mutual assistance and is subject to recall at any time.
 Property of:
 THE TECHNICAL MATERIEL CORPORATION
 MAMARONECK, NEW YORK

NOTE:
 USE MATERIAL THICKNESS FOR MAX. RADIUS UNLESS OTHERWISE SPECIFIED.

D	1	TWO "F" HOLES ADDED	1-17-61	3321	DM	DM	DM
C	1	4" DIMS 4 1/8"	11/16/60	3460	DM	DM	DM
B	1	COMPLETE REVISION	10/24/60	3234	DM	DM	DM
A	1	(6)"D HOLES WERE (6)"A HOLES	9/24/59	1213	DM	DM	DM

ISSUE ITEM CHANGED FROM DATE CN. NO. DRAFTS CHECKER ENG. APP.

TOLERANCES SCALE: FULL (Do Not Scale)

ALL DEC. DIM. $\pm 1/4$
 OTHERS FRAC. DIM. $\pm 1/4$
 ANGULAR DIM. ± 1

DRILL, PUNCH, COMMERCIAL STOCK SIZES AND MANUFACTURERS TOLERANCES ARE NOT INCLUDED.

1	PS-4	PAL-1K	6-18-59
REQ PER UNIT	MODEL	PROJECT NO.	DATE
		ASSY. NO.	
		USED ON	

REQ. ITEM	PART NO.	DESCRIPTION	SYMBOL
.081 THK.		THE TECHNICAL MATERIEL CORP.	
STOCK SIZE		MAMARONECK, NEW YORK	
Aluminum		SIDEPLATE, RIGHT	
MATERIAL	WEIGHT PER PC.	(PS-4)	
5052-H32			
TYPE & TEMPER	16/16/59		
HEAT TREAT. SPEC.	H32		
5404 Iridite			
FINISH & SPEC. NO.			

DRAWN: [Signature] ELEC. DES. APP. [Signature] MECH. DES. APP. [Signature]

CHECKED: [Signature] FINAL APPROVAL: [Signature]

MS-1792 D

MS-1792 D