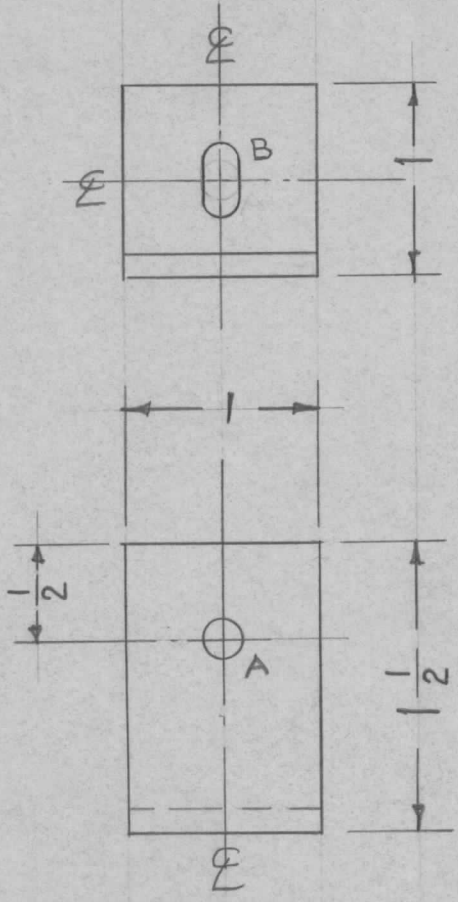


REQ. PER. UNIT	USED ON			MS-1789	A
	MODEL	ASS'Y. NO.	DATE		
2	PS-5		6-12-59		



A - $\frac{13}{64}$ (.203) D. 1 Req.
 B - $\frac{13}{64} \times \frac{13}{32}$ SLOT - 1 REQ.

ISSUE	ITEM	CHANGED FROM	DATE	CH. NO.	DRAFTS	CHECKER	ENG. APP.	REQ. ITEM	PART NO.	DESCRIPTION	SYMBOL	
								1/8 THK		THE TECHNICAL MATERIEL CORP.		
								STOCK SIZE		MAMARONECK, NEW YORK		
A		CHGD QTY. "A" HOLES. ADD "B" SLOT & DIM.	8-8-66	16731	RME	<i>[Signature]</i>	<i>[Signature]</i>	Aluminum		BRACKET, RESISTOR MTG.		
TOLERANCES								5052-H32		6 ⁶ /12/59	<i>[Signature]</i> <i>[Signature]</i>	
DEC. DIM. ±			SCALE: FULL (Do Not Scale)					TYPE & TEMPER		DRAWN	CHECKED	FINAL APPROVAL
FRAC. DIM. ± 1/64			MAXIMUM ALLOWABLE TOLERANCES HAVE BEEN DETERMINED AND ANY DEVIATIONS WILL BE CAUSE FOR REJECTION. REMOVE ALL BURRS AND SHARP EDGES					5404 Iridite		<i>[Signature]</i>		MS-1789
ANGULAR DIM. ±								FINISH & SPEC. NO.		ELEC. DES. APP	MECH. DES. APP	