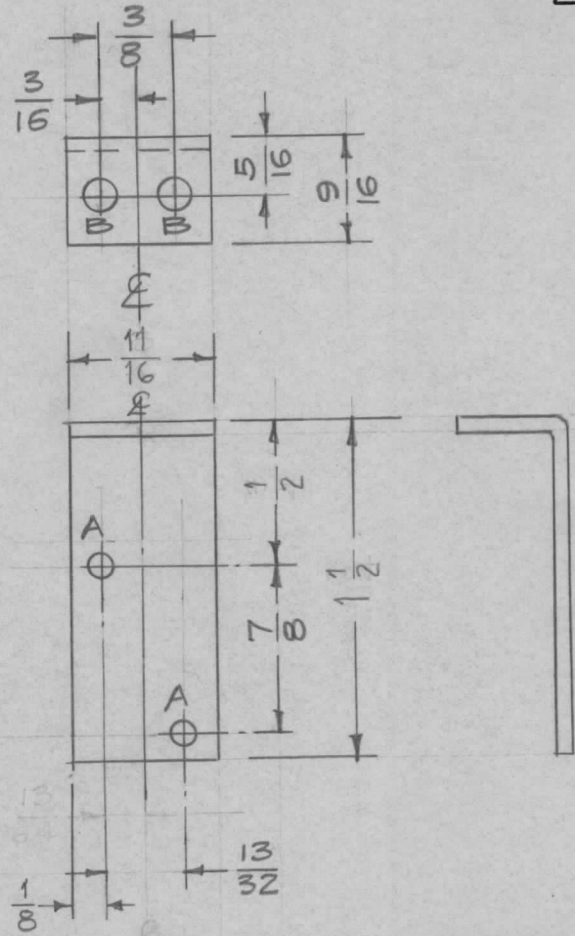


REQ. PER. UNIT	USED ON			MS-1785	A
	MODEL	ASS'Y. NO.	DATE		
1	PS-5		6-15-59		

(PAL-1K)



A - $\frac{1}{8}$ (.125) D. 2 Req.

B - $\frac{11}{64}$ (.171) D. 2 Req.

ISSUE	ITEM	CHANGED FROM	DATE	CH. NO.	DRAFTS	CHECKER	ENG. APP.	REQ. ITEM	PART NO.	DESCRIPTION	SYMBOL	
										THE TECHNICAL MATERIEL CORP. MAMARONECK, NEW YORK		
									.081 THK. STOCK SIZE	BRACKET, SWITCH MTG.		
A	3	11/16 WAS 3/4 1/8 WAS 3/4 1-1/2 WAS 1-3/4	8/23/59	1207	DM	<i>[Signature]</i>	<i>[Signature]</i>		Aluminum			
TOLERANCES								MATERIAL				
DEC. DIM. ±			SCALE: Full (Do Not Scale)					5052-H32		16 6/15/59	<i>[Signature]</i>	
FRAC. DIM. ± 1/64			MAXIMUM ALLOWABLE TOLERANCES HAVE BEEN DETERMINED AND ANY DEVIATIONS WILL BE CAUSE FOR REJECTION.					TYPE & TEMPER	HEAT TREAT. SPEC.	DRAWN	CHECKED	FINAL APPROVAL
ANGULAR DIM. ±			REMOVE ALL BURRS AND SHARP EDGES					S404 Iridite			<i>[Signature]</i>	MS-1785
								FINISH & SPEC. NO.	ELEC. DES. APP.	MECH. DES. APP.	A	