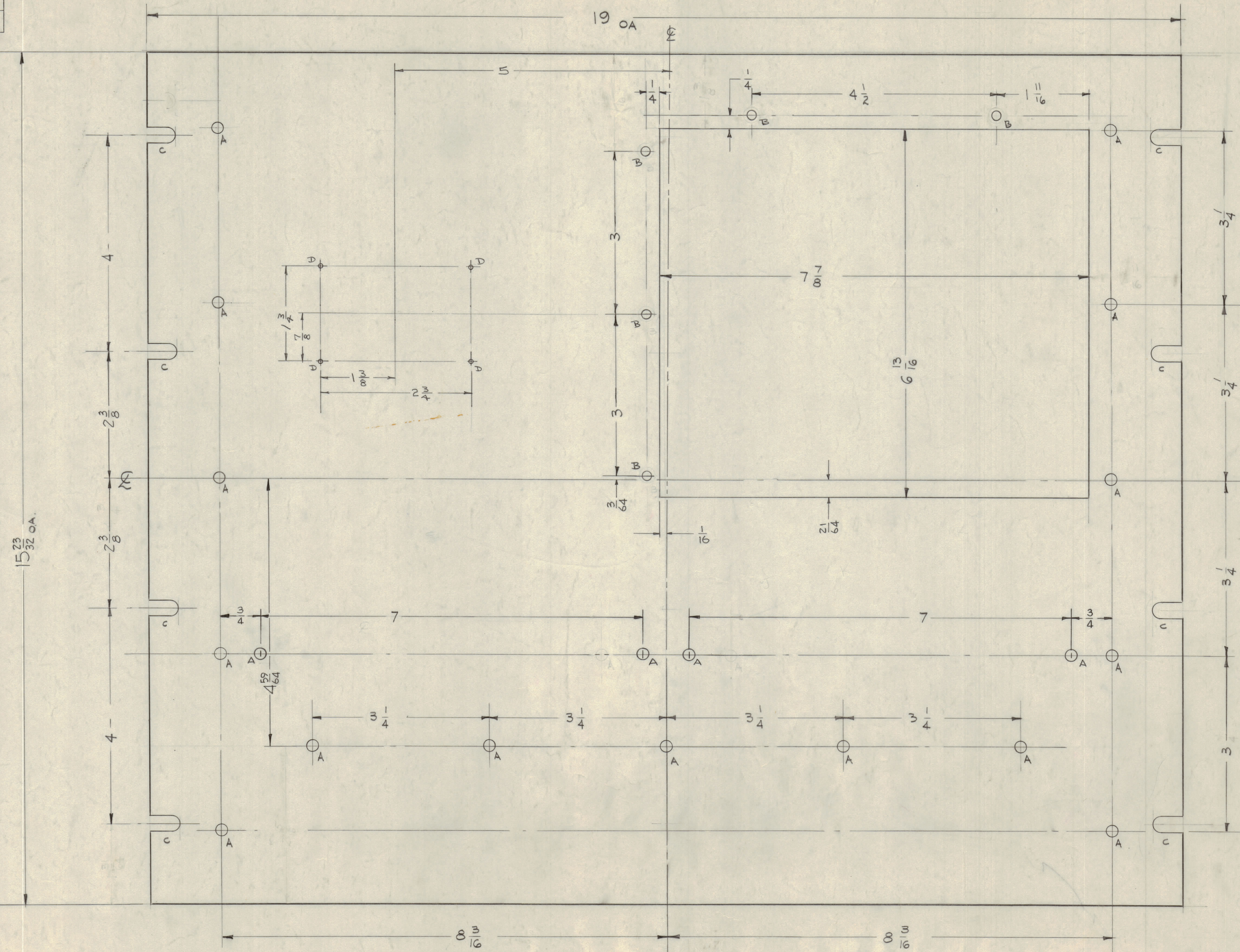
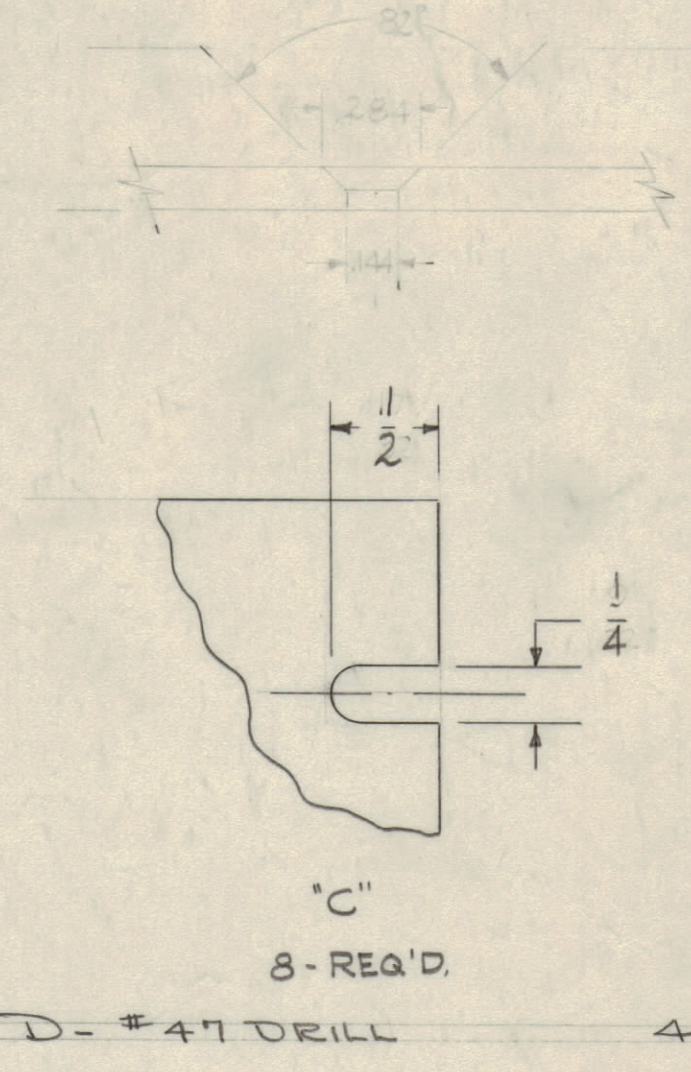


IF IT IS FOUND DESIRABLE TO CHANGE ANY TOLERANCE OR OTHER DETAIL SPECIFIED ON THIS DRAWING NOTIFY THE PURCHASER PROMPTLY.
 MAXIMUM ALLOWABLE TOLERANCES HAVE BEEN DETERMINED AND DEVIATIONS WILL BE CAUSE FOR REJECTION. REMOVE ALL BURRS AND SHARP EDGES.



HOLES
 A - 13/64 (.203)
 B - 3/16 (.187) DIA.
 REQ'D.
 19
 5



MS-1777 B

NOTES:
 FINISH -
 S-404 - IRIDITE
 S-114 - ZINC CHROMATE PRIMER
 S-115 - TMC SMOOTH GREY ENAMEL } FRONT & EDGES ONLY
 OR PRIME & PAINT TO CUST.
 MACHINING
 1- LATERAL BOW OF PANEL MUST BE KEPT TO .031 TOLERANCE.
 2- MILL ALL EDGES
 3- HOLES MUST BE DRILLED
 4- PANEL MUST BE FREE OF ALL MACHINING MARKS, GOUGES, AND SCRATCHES. IF NECESSARY, SAND FRONT OF PANEL WITH NO. 120 GRIT SANDPAPER.

NOTICE TO PERSONS RECEIVING THIS DRAWING
 THE TECHNICAL MATERIEL CORPORATION claims proprietary right in the material disclosed herein. This drawing is issued in confidence and is not to be used to manufacture anything shown hereon without permission from THE TECHNICAL MATERIEL CORPORATION to the user. This drawing is loaned for making assistance and is subject to recall at any time.
 Property of:
 THE TECHNICAL MATERIEL CORPORATION
 MAMARONECK, NEW YORK

| | | | | |
|------------|----------------|---|------|-------|
| ISSUE | DATE | BY | CHKD | APP'D |
| B 1 | 3-10-61 | RU | | |
| A 1 | | | | |
| TOLERANCES | | | | |
| ALL DIM. | ± | DRILL PUNCH COMMERCIAL STOCK SIZES AND MANUFACTURERS TOLERANCES ARE NOT INCLUDED. | | |
| OTHERS | ± 1/64 | | | |
| | ANGULAR DIM. ± | | | |

| | | | | |
|---------------|-------|-------------|-----------|--------|
| REQ. PER UNIT | MODEL | PROJECT NO. | ASSY. NO. | DATE |
| 1 | PS-5 | PAL-1K | | 6-3-59 |
| USED ON | | | | |

| | | | |
|-----------|--------------------|---|-----------------|
| REQ. ITEM | PART NO. | DESCRIPTION | SYMBOL |
| | 3/16 | THE TECHNICAL MATERIEL CORP. MAMARONECK, NEW YORK | |
| | ALUMINUM | PANEL, FRONT | |
| | 2024-T3 | (PS-5) | |
| | TYPE & TEMPER | DRAWN | ELEC. DES. APP. |
| | HEAT TREAT SPEC. | CHECKED | FINAL APPROVAL |
| | SEE NOTE | | |
| | FINISH & SPEC. NO. | | |