

IF IT IS FOUND DESIRABLE TO CHANGE ANY TOLERANCE OR OTHER DETAIL SPECIFIED ON THIS DRAWING NOTIFY THE PURCHASER PROMPTLY.  
 MAXIMUM ALLOWABLE TOLERANCES HAVE BEEN DETERMINED AND DEVIATIONS WILL BE CAUSE FOR REJECTION. REMOVE ALL BURRS AND SHARP EDGES.

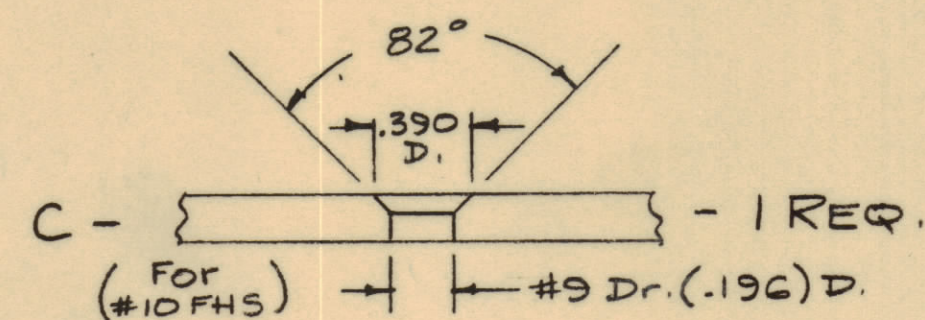
NOTICE TO PERSONS RECEIVING THIS DRAWING

THE TECHNICAL MATERIEL CORPORATION claims proprietary right in the material disclosed herein. This drawing is issued in confidence for engineering information only and may not be reproduced or used to manufacture anything shown herein without permission from THE TECHNICAL MATERIEL CORPORATION to the user. This drawing is loaned for mutual assistance and is subject to recall at any time.

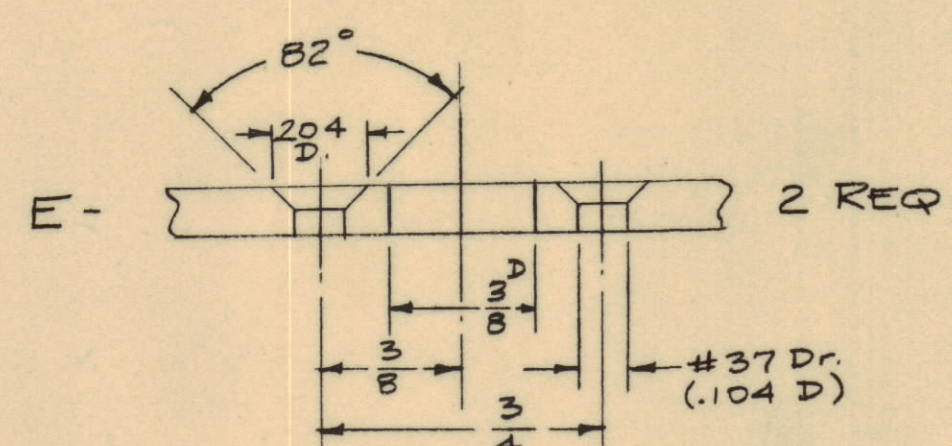
Property of:  
 THE TECHNICAL MATERIEL CORPORATION  
 MAMARONECK, NEW YORK

A -  $\frac{11}{64}$  (.171) D. 2 REQ

B -  $\frac{13}{64}$  (.203) D. 14 REQ.

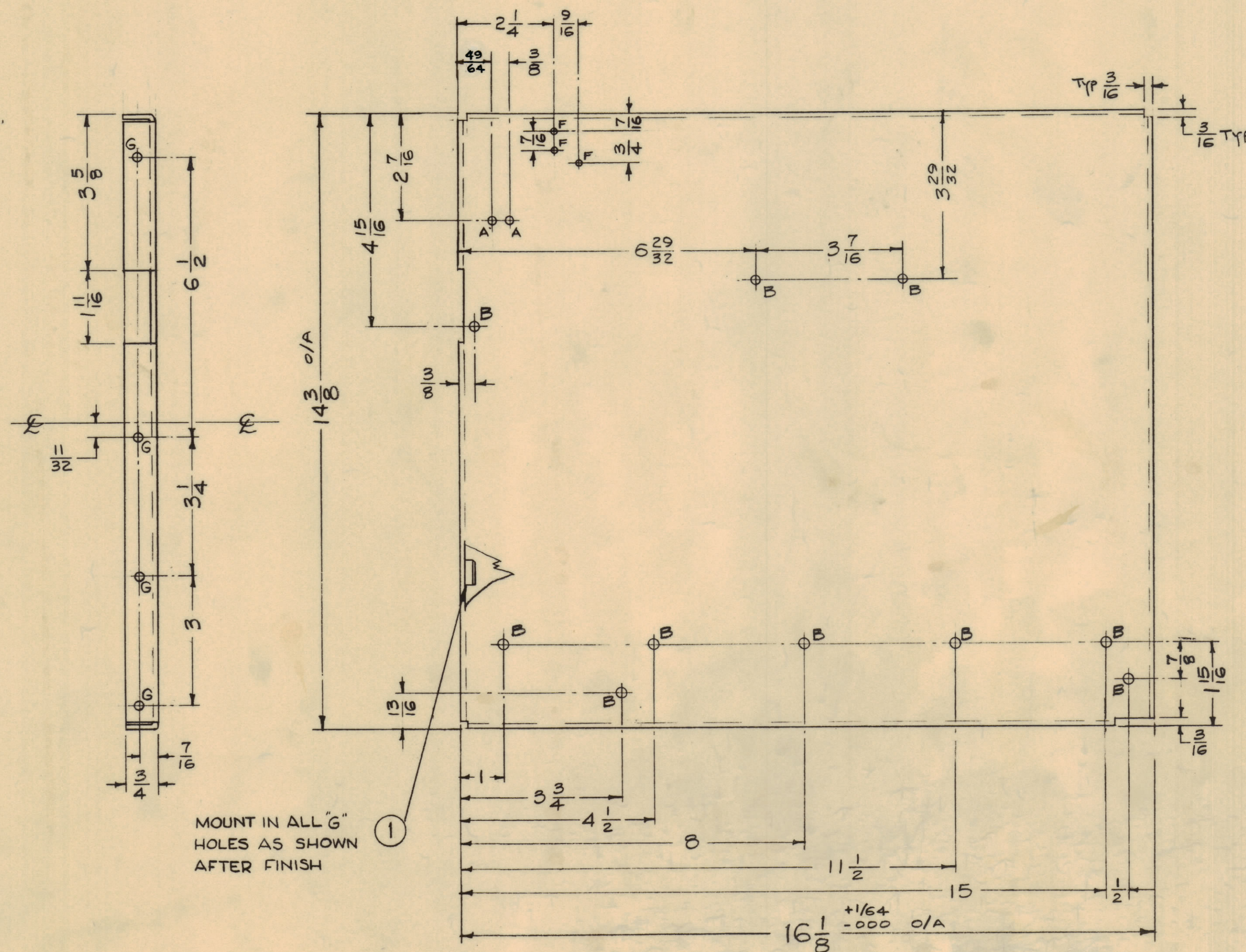
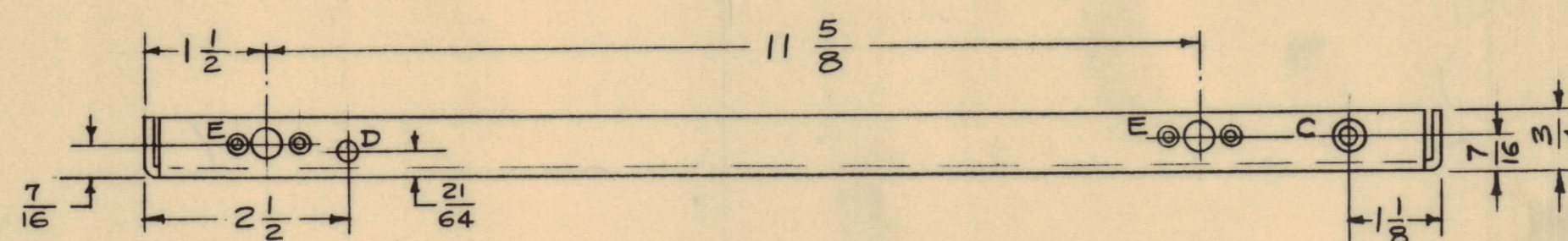


D -  $\frac{1}{4}$  (.250) D. 1 REQ.

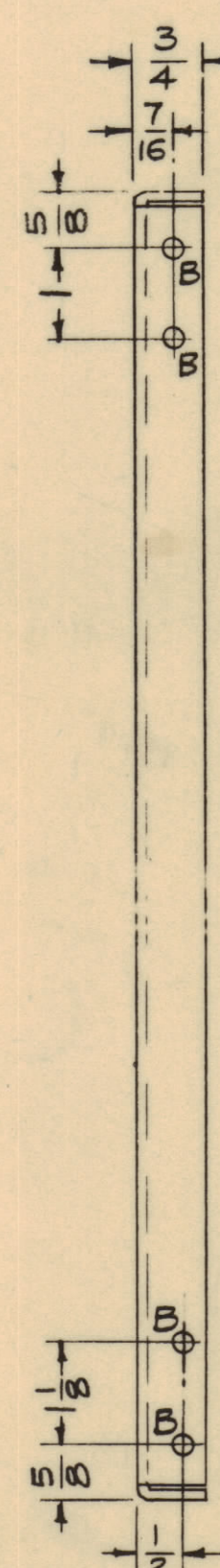


F -  $\frac{1}{8}$  (.125) D. 3 REQ.

G - .253-250 DIA — 4 REQ



MOUNT IN ALL "G" HOLES AS SHOWN AFTER FINISH



NOTE - All Inside Bend Radii to be  $\frac{1}{8} R$

MS1776-

MARK TMC PT. NO.  $\frac{1}{8}$  HIGH GOTHIC W/ LATEST REVISION LETTER.

C	49/64 DIM. WAS 13/16	7/16/54	16495	JL	001	000
B	4(G) Holes were (B) Holes	3/11/54	4383	RU	001	000
A	15/16 DIM. WAS 13/16 DIM.	3/14/50	2356	CA	001	000
ISSUE	ITEM	CHANGED FROM	DATE	CH. NO.	DRAWER	CHECKER
TOLERANCES			SCALE: 1/2 DO NOT SCALE			
ALL OTHERS	DEC. DIM. $\pm 1/64$	DRILL, PUNCH, COMMERCIAL STOCK				
	FRAC. DIM. $\pm 1/64$	MILLS AND MANUFACTURERS				
	ANGULAR DIM. $\pm$	TOLERANCES ARE NOT INCLUDED.				

1	PS-5	PAL-1K	6-11-59
REQ PER UNIT	MODEL	PROJECT NO.	DATE
		ASSY. NO.	
USED ON			

REF-TMC DWG NO-LD-604

4	1	NT-129-1032-4	NUT ROUND, SWAGE TYPE.	G
REQ. ITEM	PART NO.	DESCRIPTION		SYMBOL
1/8 THK.		THE TECHNICAL MATERIEL CORP. MAMARONECK, NEW YORK		
ALUMINUM		SIDEPLATE, RIGHT (PS-5)		
MATERIAL		WEIGHT PER PC.		
5052-H32		16/11/59		
TYPE & TEMPER		DRAWN	ELC. DES. APP.	MECH. DES. APP.
		UFB		
		CHECKED	FINAL APPROVAL	
			MS 1776 C	
		HEAT TREAT. SPEC.		
		5404 IRIDITE		
		FINISH & SPEC. NO.		

MS 1776 C