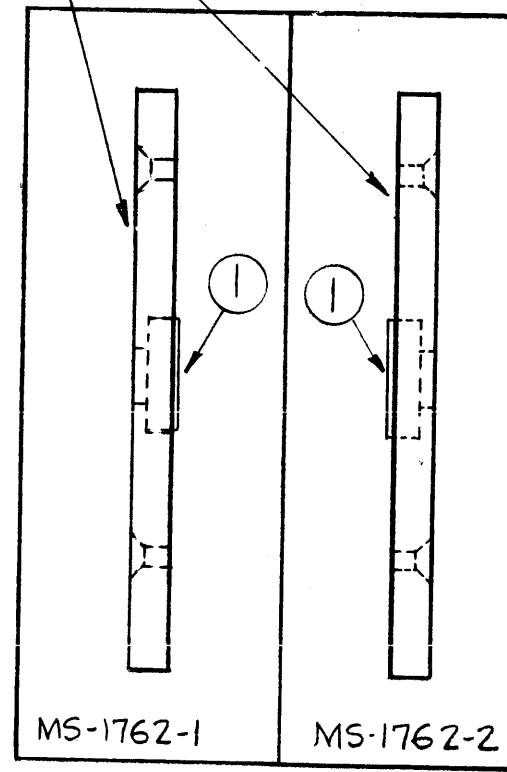
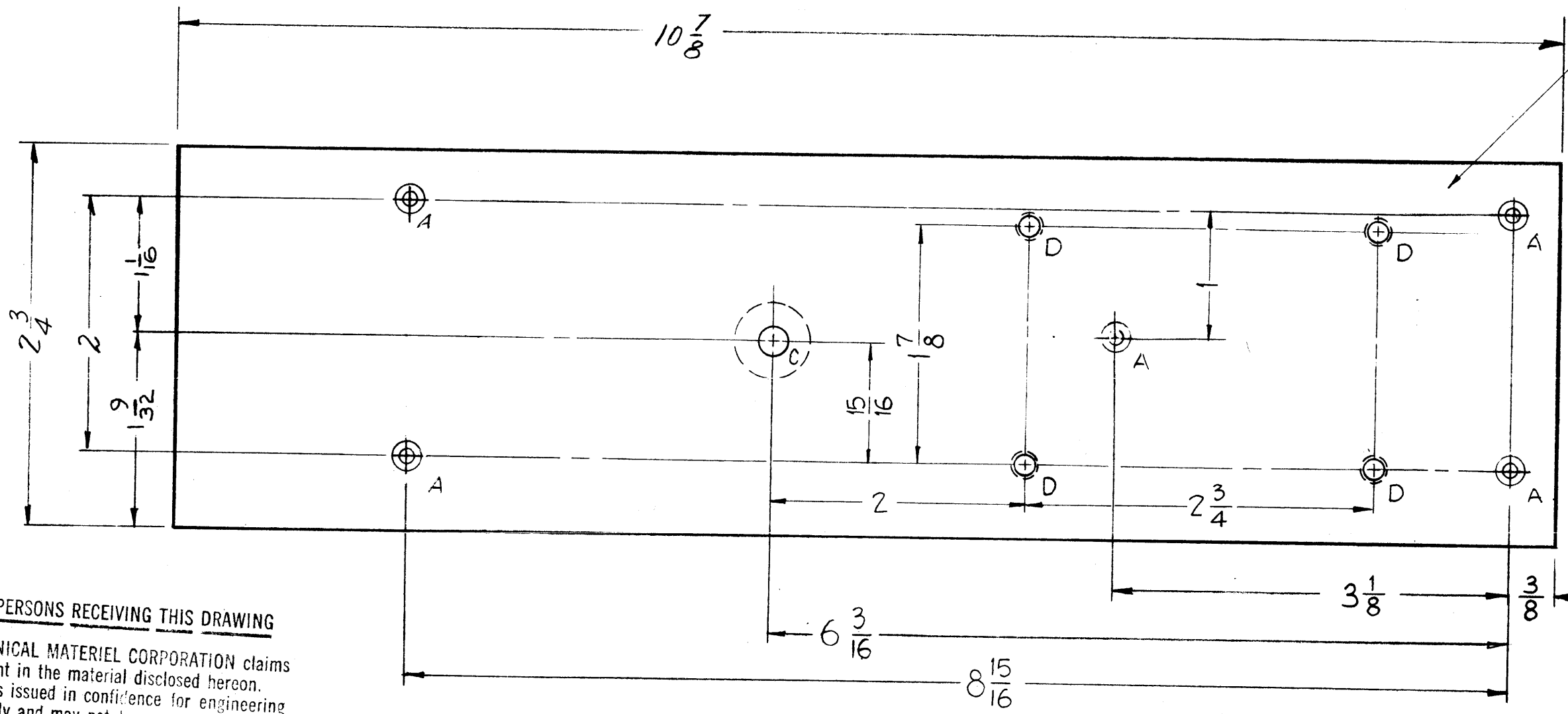


MS-1762 C



NOTICE TO PERSONS RECEIVING THIS DRAWING

THE TECHNICAL MATERIEL CORPORATION claims proprietary right in the material disclosed hereon. This drawing is issued in confidence for engineering information only and may not be reproduced or used to manufacture anything shown hereon without permission from THE TECHNICAL MATERIEL CORPORATION to the user. This drawing is loaned for mutual assistance and is subject to recall at any time.

Property of:
THE TECHNICAL MATERIEL CORPORATION
MAMARONECK, NEW YORK

A - DRILL & C'SINK FOR 6-32 F.H.S. 5 REQ.

MS-1762-1 C'SINK "A" HOLES AS SHOWN
MS-1762-2 C'SINK "A" HOLES FROM REAR

C - Dr. thru .413 Dia., then C'bore 5/8 Dia x 1/8 Deep. 1 REQ.

D - DR. & TAP FOR 8-32 F.H.S. 4 REQ.

ISSUE	ITEM	CHANGED FROM	DATE	CH. NO.	DRAFTS	CHECKER	ENG. APP.
C	1	DRAWING REVISED	4/26/61	4755	DDM	QOB	[Signature]
B	2	(4)"D" HOLES ADDED	2-15-61	4147	M.A.F.	QOB	[Signature]
A	1	(1)"B" HOLE 13/64 DELETED					
A	1	"B" HOLE RELOCATED	7-22-60	2628	CW	[Signature]	[Signature]

TOLERANCES: DEC. DIM. ±, FRAC. DIM. ± 1/64, ANGULAR DIM. ±

SCALE: DO NOT SCALE

MAXIMUM ALLOWABLE TOLERANCES HAVE BEEN DETERMINED AND ANY DEVIATIONS WILL BE CAUSE FOR REJECTION. REMOVE ALL BURRS AND SHARP EDGES

2 EA	SBE-2	GPT 10KW	56-59
REQ. PER UNIT	MODEL	PROJECT NO.	ASS'Y. NO.
			DATE

1	1	NT-129-524-4	NUT, SWAGE TYPE (ROUND)	
REQ. ITEM	PART NO.		DESCRIPTION	SYMBOL
3/16 THICK STOCK SIZE			THE TECHNICAL MATERIEL CORP. MAMARONECK, NEW YORK	
ALUMINUM			SPACER, PLATE	
MATERIAL			L.H. & R.H. SBE-2	
5052-H32			DRAWN	CHECKED
TYPE & TEMPER		HEAT TREAT. SPEC.	FINAL APPROVAL	
5404 IRIDITE			[Signature]	[Signature]
FINISH & SPEC. NO.		ELEC. DES. APP.	MECH. DES. APP.	
				MS-1762 C