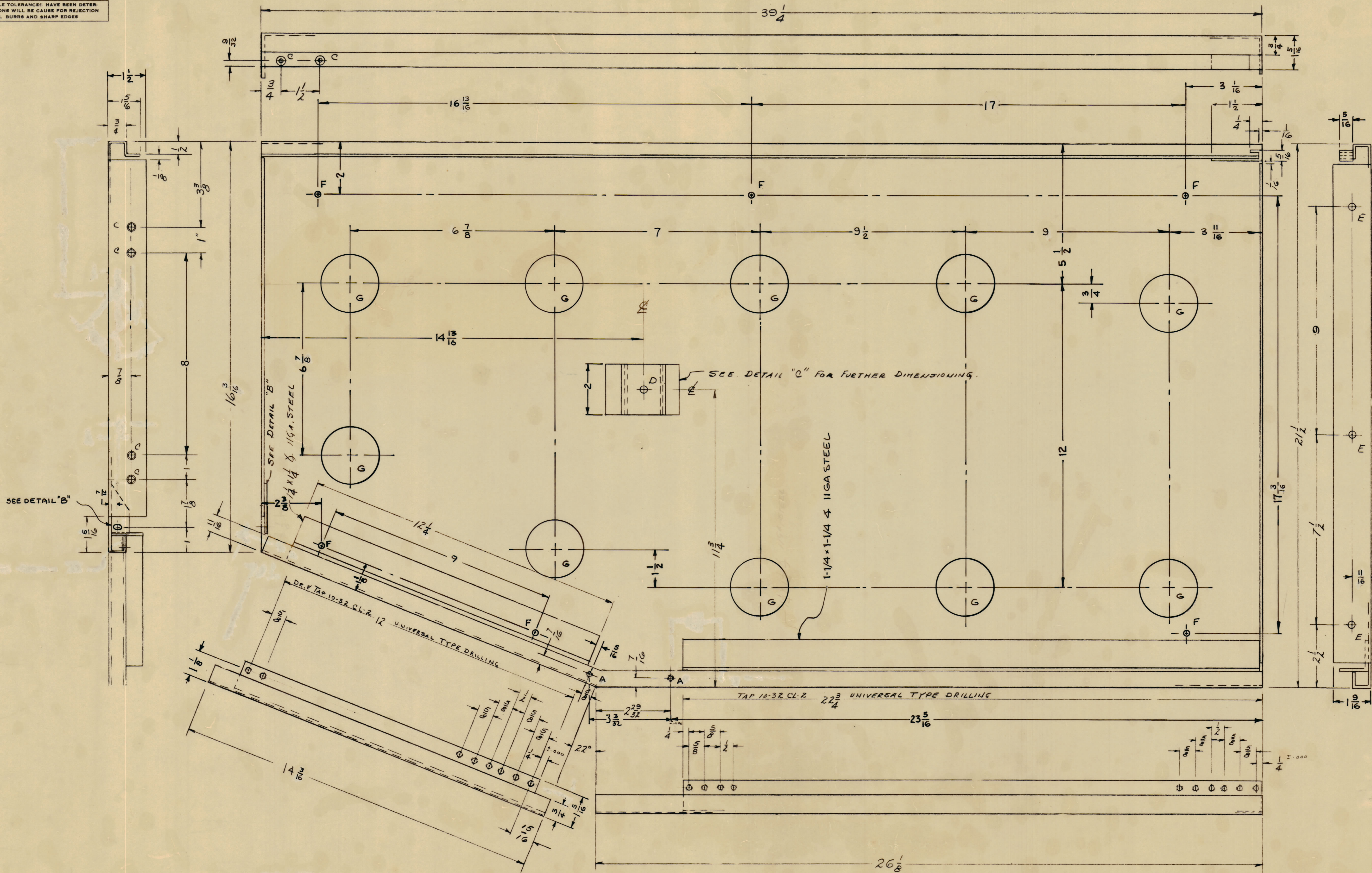


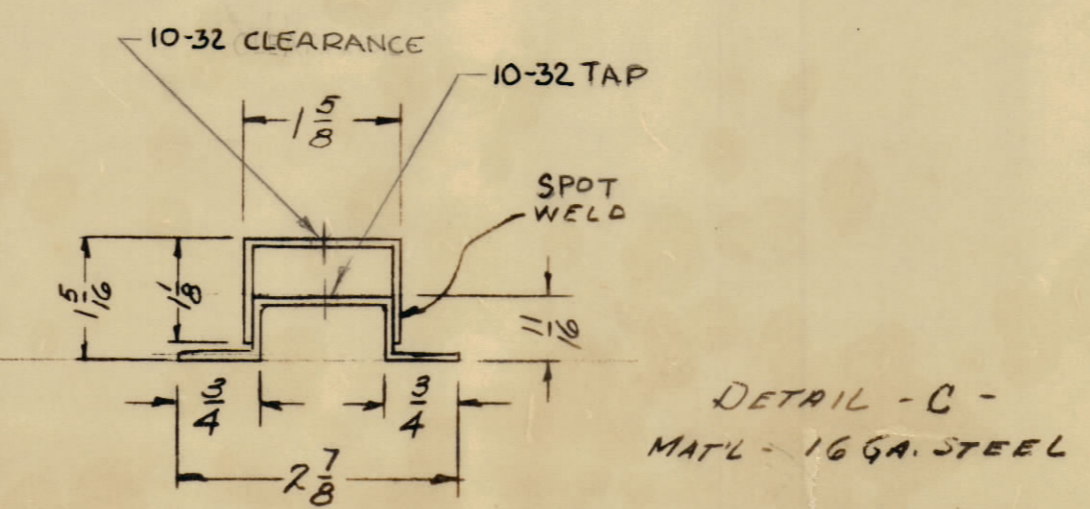
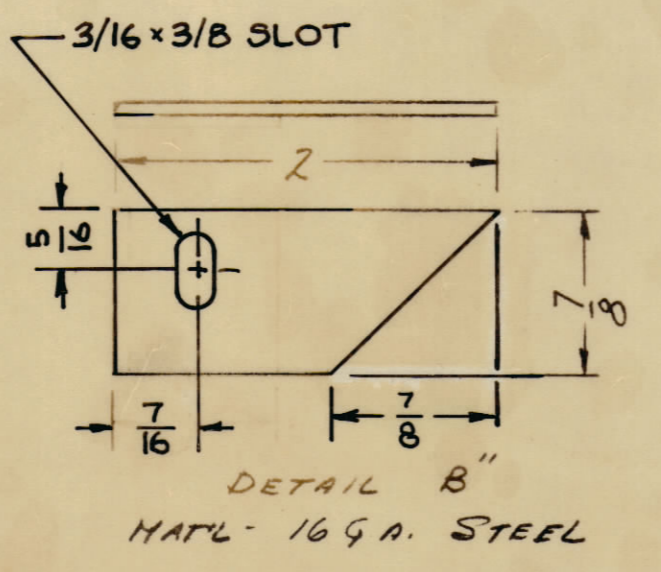
IF IT IS FOUND DESIRABLE TO CHANGE ANY TOLERANCE OR OTHER DETAIL SPECIFIED ON THIS DRAWING NOTIFY THE PURCHASER PROMPTLY.
 MAXIMUM ALLOWABLE TOLERANCES HAVE BEEN DETERMINED AND DEVIATIONS WILL BE CAUSE FOR REJECTION REMOVE ALL BURRS AND SHARP EDGES



- A- DR TAP 8-32 2 REQ.
- B- DELETED
- C- CSINK FOR 8-32 F.H.S. 6 REQ
- D- DELETED
- E- 1/4 (.250) DIA. HOLE 3 REQ
- F- 13/64 (.203) DIA. HOLE 6 REQ
- G- 2 1/4 D. 10 REQ.

MS-1743 D

D	S371 & S114 DELETED S520 WAS S220	7-20-60	10421	WLO	OP		
C	7 "C" HOLES-WAS 8 REQ'D. 8 2" HOLES RELOCATED 9 HOLES "B" & "D" DELETED 10 ON DET. "C" CLEAR TAP WAS 8-32 11 ON DET. "C" 1/8 CUTOUT ADD. 12 DETAIL "A" DELETED 13 DIMS. UPDATED	6-19-64	11545	MB			
B	1 DIM 16 3/8 WAS 17" DIA.	8-30-59	2896	CM			
A	2 "F" HOLES WAS 7/8 D 1 "G" NOTE ADDED	5-23-60	10275				
ISSUE	ITEM	CHANGED FROM	DATE	CN. NO.	DRAFTS	CHECKER	ENG. APP.
TOLERANCES							
SCALE:							
DRILL, PUNCH, COMMERCIAL STOCK SIZES AND MANUFACTURERS TOLERANCES ARE NOT INCLUDED.							



1	CONSOLE	PROJECT NO.	DATE	1-7-60
REQ PER UNIT	MODEL	ABBY. NO.	USED ON	

REQ. ITEM	PART NO.	DESCRIPTION	SYMBOL
16 GA.		THE TECHNICAL MATERIEL CORP. MAMARONECK, NEW YORK	
STEEL		LEFT SIDE, INSIDE	
MATERIAL	WEIGHT PER PC.		
MILD			
TYPE & TEMPER			
HEAT TREAT SPEC.			
8520 BU/GRY TEX VINYL			
FINISH & SPEC. NO.			
DRAWN: [Signature] CHECKED: [Signature]			FINAL APPROVAL: [Signature]
			MS-1743 D