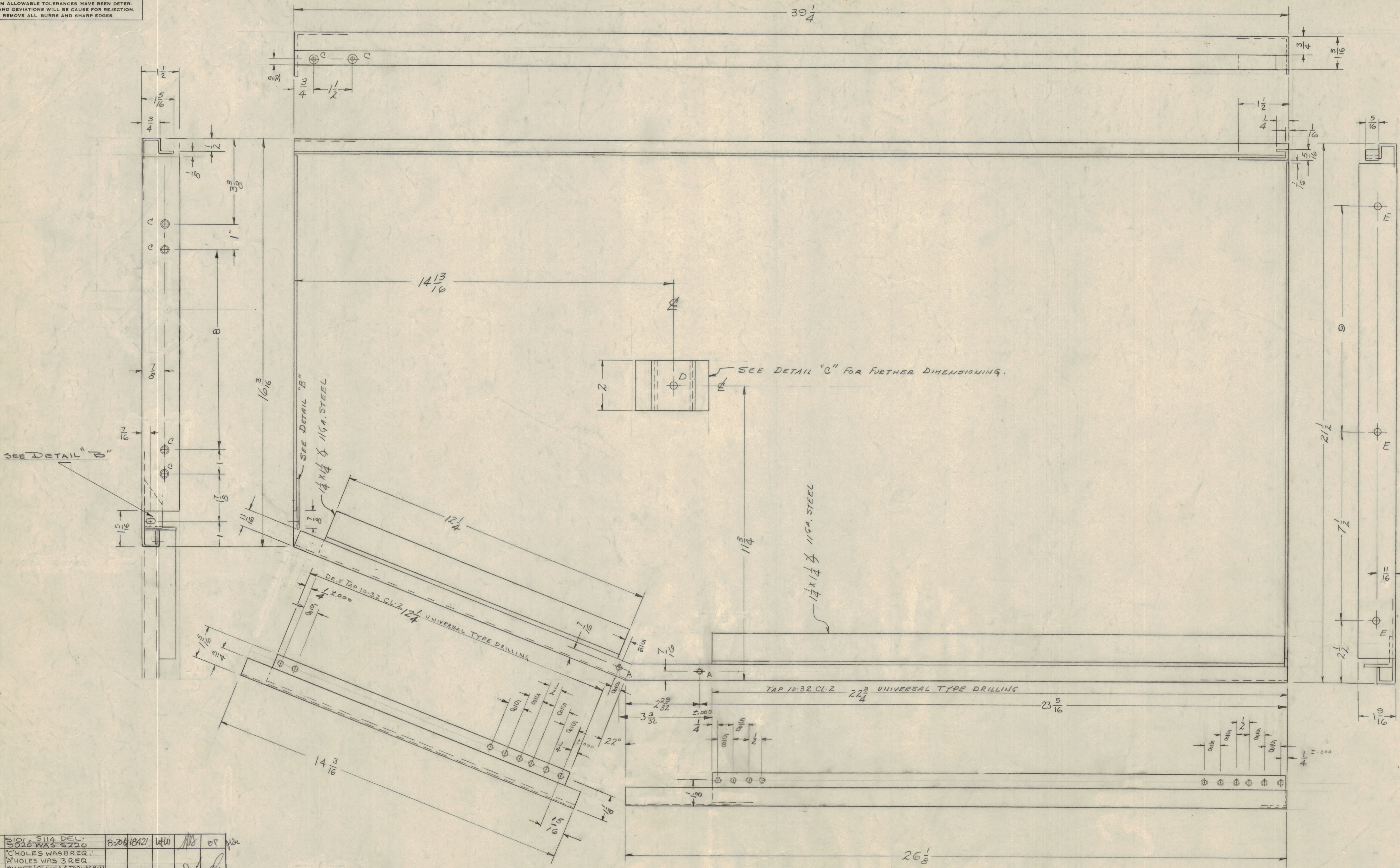


IF IT IS FOUND DESIRABLE TO CHANGE ANY TOLERANCE OR OTHER DETAIL SPECIFIED ON THIS DRAWING NOTIFY THE PURCHASER PROMPTLY.
 MAXIMUM ALLOWABLE TOLERANCES HAVE BEEN DETERMINED AND DEVIATIONS WILL BE CAUSE FOR REJECTION. REMOVE ALL BURRS AND SHARP EDGES.



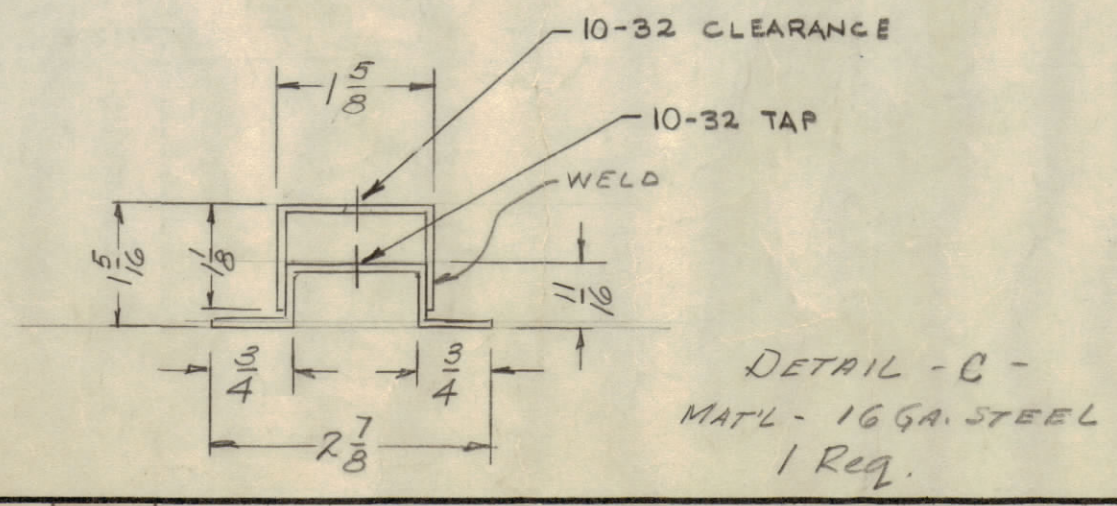
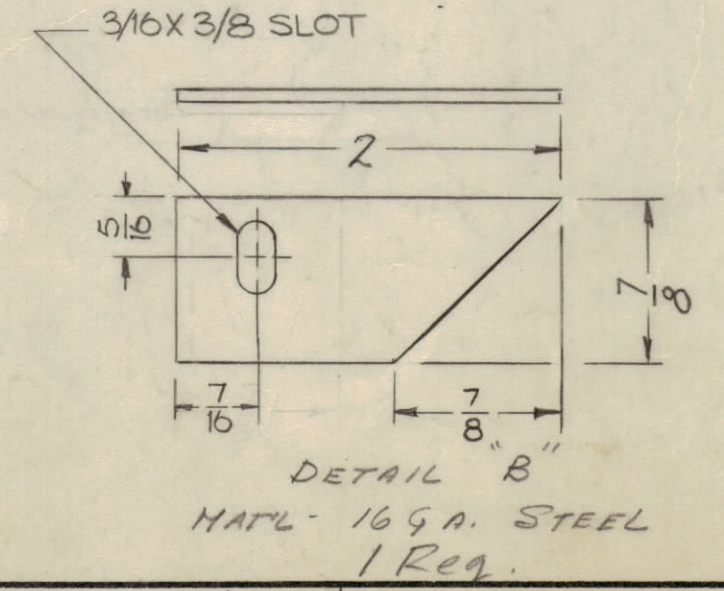
- A - DR. & TAP 8-32 2 REQ.
- B - DR. & TAP 10-32 2 REQ.
- C - CSINK FOR 8-32 F.H.S. 6 REQ.
- D - 3/16 (.187) DIA. HOLE 1 REQ.
- E - 1/4 (.250) DIA. HOLE 3 REQ.

SEE DETAIL "D"

SEE DETAIL "C" FOR FURTHER DIMENSIONING.

SEE DETAIL "B"
 1/4 X 1/4 X 1/8 GA. STEEL

1/4 X 1/4 X 1/8 GA. STEEL



NOTICE TO PERSONS RECEIVING THIS DRAWING
 THE TECHNICAL MATERIEL CORPORATION claims proprietary right in the material disclosed hereon. This drawing is issued in confidence for engineering information only and may not be reproduced or used to manufacture anything shown hereon without permission from THE TECHNICAL MATERIEL CORPORATION to the user. This drawing is loaned for mutual assistance and is subject to recall at any time.
 Property of:
 THE TECHNICAL MATERIEL CORPORATION
 MAMARONECK, NEW YORK

F	1	1	1	1	1	1	1	1	1
E	2	2	2	2	2	2	2	2	2
D	3	3	3	3	3	3	3	3	3
C	4	4	4	4	4	4	4	4	4
B	5	5	5	5	5	5	5	5	5
A	6	6	6	6	6	6	6	6	6

REQ. PER UNIT	MODEL	PROJECT NO.	ASSY. NO.	DATE	SYMBOL
1	CONSOLE				
					16 GA. THE TECHNICAL MATERIEL CORP. MAMARONECK, NEW YORK
					STEEL LEFT SIDE, OUT SIDE
					MILD
					TYPE & TEMPER
					HEAT TREAT. SPEC.
					FINISH & SPEC. NO.
					MS-1736 F

MS-1736 F