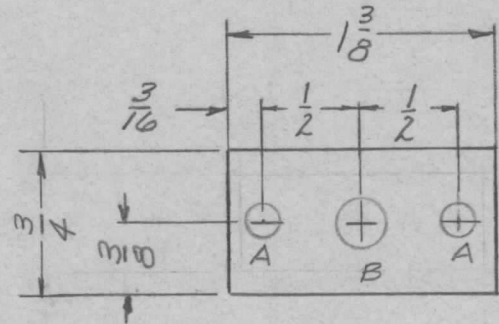


REQ. PER. UNIT	USED ON			MS-1735	A
	MODEL	ASSY. NO.	DATE		
2	UTD-2		4-22-59		



A -  $\frac{3}{16}$  (.187) DIA. HOLE 2 REQ.  
 B -  $\frac{1}{4}$  (.250) DIA. HOLE 1 REQ.

ISSUE	ITEM	CHANGED FROM	DATE	CH. NO.	DRAFTS	CHECKER	ENG. APP.	REQ. ITEM	PART NO.	DESCRIPTION	SYMBOL	
										THE TECHNICAL MATERIEL CORP. MAMARONECK, NEW YORK		
										SPACER, LATCH		
A	1	5404-IRIDITE WAS 5101 CAUSTIC DIP	12-8 59	1001			EMN					
TOLERANCES			SCALE: CP					5052-H32		DRAWN: HJC CHECKED: HJC FINAL APPROVAL: HJC		
DEC. DIM. ± FRAC. DIM. ± 1/64 ANGULAR DIM. ±			MAXIMUM ALLOWABLE TOLERANCES HAVE BEEN DETERMINED AND ANY DEVIATIONS WILL BE CAUSE FOR REJECTION. REMOVE ALL BURRS AND SHARP EDGES					3404 YEL IRIDITE		ELEC. DES. APP: MECH. DES. APP: MS-1735 A		