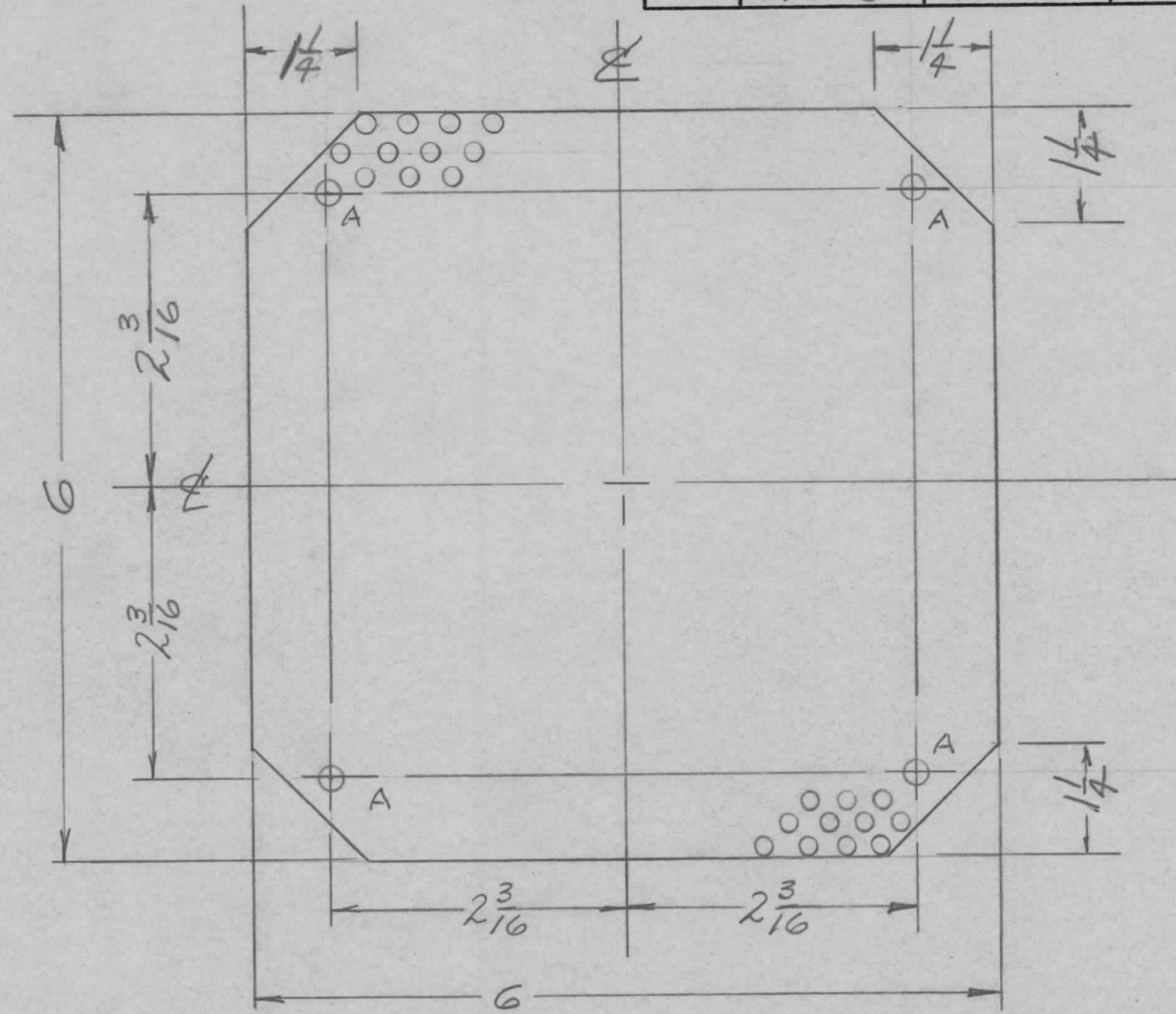


REQ. PER. UNIT	USED ON			MS-1733 B
	MODEL	ASS'Y. NO.	DATE	
1	UTD-2	RAK-8	4-21-59	



A- $\frac{11}{64}$  (.171) DIA HOLE-4 Req.

Perforated Matl.  
.150 DIA. HOLES  
ON  $\frac{3}{16}$  ES

ISSUE	ITEM	CHANGED FROM	DATE	CH. NO.	DRAFTS	CHECKER	ENG. APP.	REQ. ITEM	PART NO.	DESCRIPTION	SYMBOL		
										THE TECHNICAL MATERIEL CORP. MAMARONECK, NEW YORK			
B	/	SAOA IRIDITE WAS S101 CAUSTIC DIP	12-8 59	1001			EMN		.051 THICK STOCK SIZE	SCREEN, SPEAKER			
A	-	1/4 NOTCH WAS 1/8	5/1/59	946					ALUMINUM				
TOLERANCES								MATERIAL					
DEC. DIM. $\pm$			SCALE: CRO					5052-H32		CRO			
FRAC. DIM. $\pm$ 1/64			MAXIMUM ALLOWABLE TOLERANCES HAVE BEEN DETERMINED AND ANY DEVIATIONS WILL BE CAUSE FOR REJECTION. REMOVE ALL BURRS AND SHARP EDGES					TYPE & TEMPER		HEATTREAT. SPEC.		DRAWN	
ANGULAR DIM. $\pm$								SAOA-1/2Z IRIDITE				CHECKED	
								FINISH & SPEC. NO.		ELEC. DES. APP		MECH. DES. APP	
										MS-1733		B	