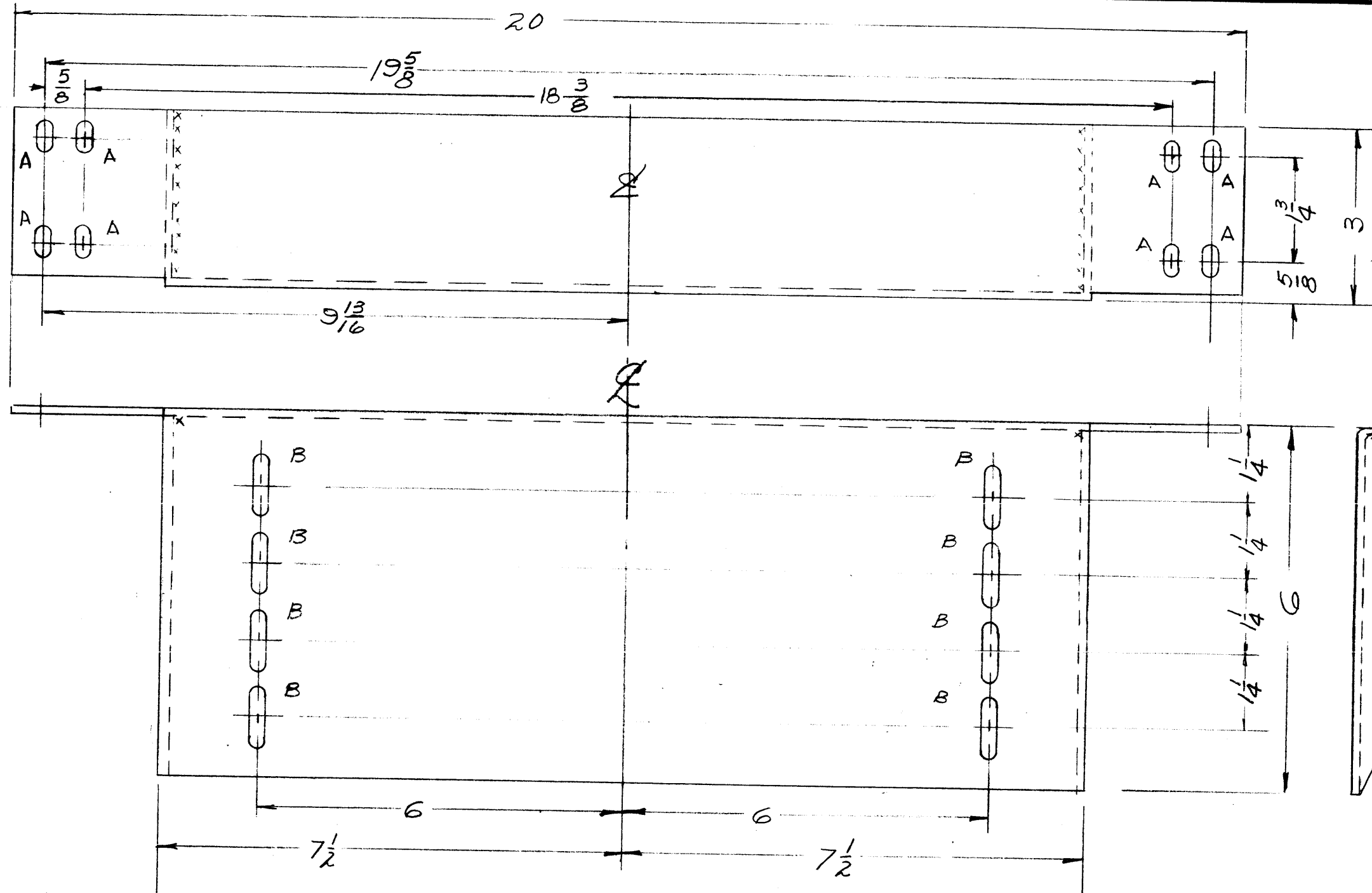


MS-1725 A



A - 13/64 X 5/8 SLOT 8 REQ.
 B - 13/64 X 1" SLOT 8 REQ.

METAL STAMP TMC P/No. MS1725-
 1/8 HIGH GOTHIC W/LATEST REV. LETTER.

ROUND ALL CORNERS
 1/16 RADIUS INSIDE BEND
 WELD ALL JOINTS

NOT TO PERSONS RECEIVING THIS DRAWING

THE TECHNICAL MATERIEL CORPORATION claims proprietary right in the material disclosed hereon. This drawing is issued in confidence for engineering information only and may not be reproduced or used to manufacture anything shown hereon without permission from THE TECHNICAL MATERIEL CORPORATION to the user. This drawing is loaned for mutual assistance and is subject to recall at any time.

Property of:
 THE TECHNICAL MATERIEL CORPORATION
 MAMARONECK, NEW YORK

ISSUE	ITEM	CHANGED FROM	DATE	CH. NO.	DRAFTS	CHECKER	ENG. APP.
	A	4 "A" HOLES ADDED - DIM. 20 WAS 20 1/8 - CONFIG. SIDE VIEW MODIFIED. MAT. WAS STEEL FINISH WAS S101 CAUSTIC DIP.	3-3-66	15840	G.D.L.	[Signature]	[Signature]
TOLERANCES			SCALE: <i>1" = 1"</i>				
DEC. DIM. ±			MAXIMUM ALLOWABLE TOLERANCES HAVE BEEN DETERMINED AND ANY DEVIATIONS WILL BE CAUSE FOR REJECTION.				
FRAC. DIM. ± 1/64			REMOVE ALL BURRS AND SHARP EDGES				
ANGULAR DIM. ±							

REQ. PER UNIT	MODEL	PROJECT NO.	ASS'Y. NO.	DATE
3	RAK-B			1-20-59

REQ. ITEM	PART NO.	DESCRIPTION	SYMBOL
.081 THK.		THE TECHNICAL MATERIEL CORP. MAMARONECK. NEW YORK	
STOCK SIZE		SUPPORT, CHASSIS	
ALUMINUM			
MATERIAL			
5052-H32			
TYPE & TEMPER	HEAT TREAT. SPEC.	DRAWN	CHECKED
5404 YEL. IRIDITE		[Signature]	[Signature]
FINISH & SPEC. NO.	ELEC. DES. APP.	MECH. DES. APP.	
			MS-1725 A