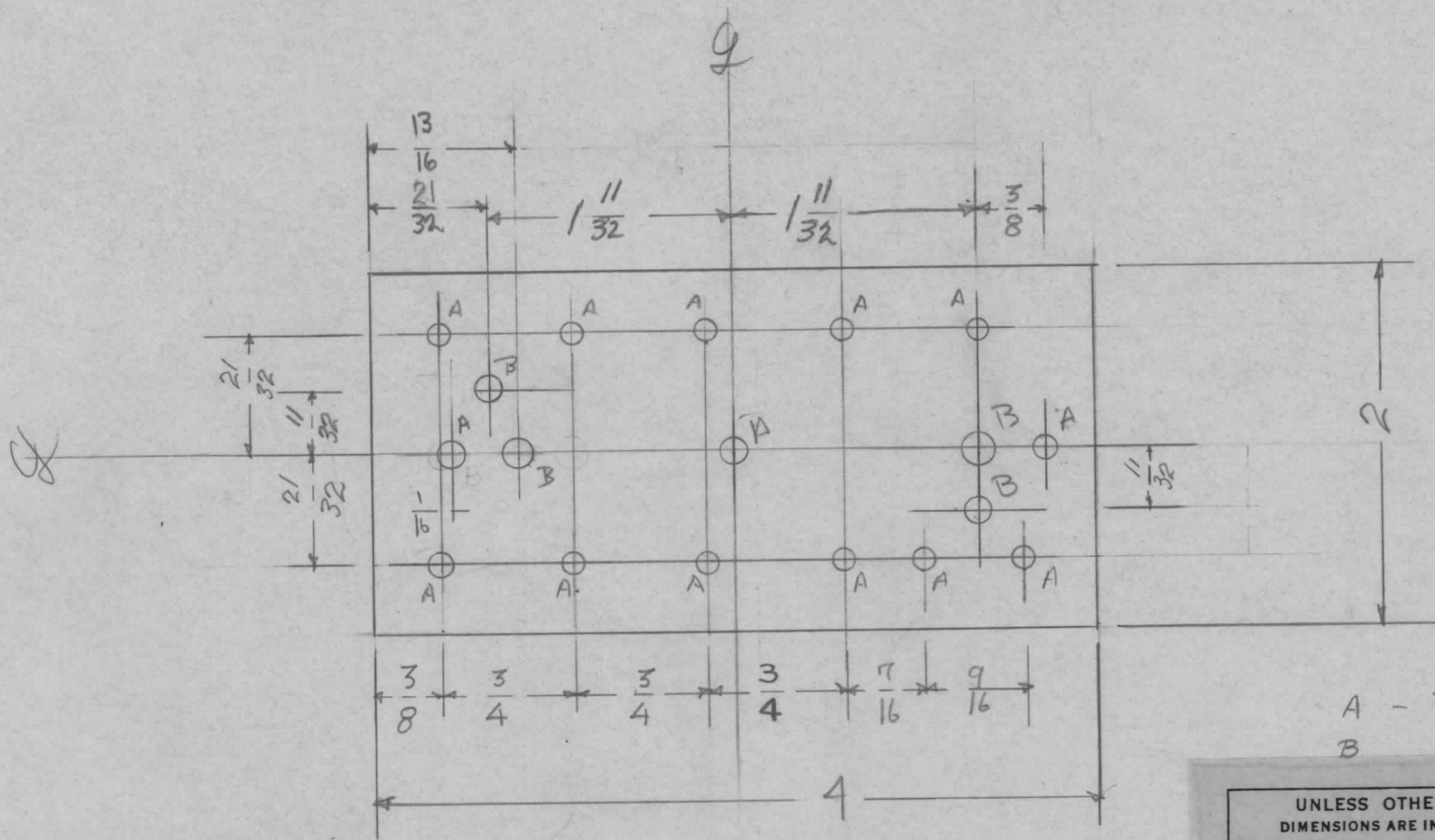


REQ. PER. UNIT	USED ON			MS-1708	△
	MODEL	ASS'Y. NO.	DATE		
1	GPT-10K	R.F. Section			



A - $\frac{1}{8}$ = 14 holes
 B $\frac{3}{16}$ = 4 holes

UNLESS OTHERWISE SPECIFIED
 DIMENSIONS ARE IN INCHES AND INCLUDE
 CHEMICALLY APPLIED OR PLATED FINISHES

DECIMALS	TOLERANCES	FRACTIONS
.X ± .05		± 1/64
.XX ± .01		ANGLES
.XXX ± .005		± 0° 30'

CUT HERE
 GUARANTEED
 2-66

ISSUE	ITEM	CHANGED FROM	DATE	CH. NO.	DRAFTS	CHECKER	ENG. APP.	REQ.	ITEM	PART NO.	DESCRIPTION	SYMBOL		
										064	THE TECHNICAL MATERIEL CORP.			
										STOCK SIZE	MAMARONECK, NEW YORK			
										ALUM.	Terminal Board monitor			
										MATERIAL	ALD.C			
A	1	3/4 Dim Added (center) (Error)	3-1-61	4269	RU	JCB	BB			5052-1432	4/2/59			
TOLERANCES			SCALE:						TYPE & TEMPER		HEATTREAT. SPEC.	DRAWN	CHECKED	FINAL APPROVAL
DEC. DIM. ±			MAXIMUM ALLOWABLE TOLERANCES HAVE BEEN DETERMINED AND ANY DEVIATIONS WILL BE CAUSE FOR REJECTION. REMOVE ALL BURRS AND SHARP EDGES						IRIDITE					
FRAC. DIM. ±									FINISH & SPEC. NO.		ELEC. DES. APP	MECH. DES. APP		
ANGULAR DIM. ±											ms-1708		A	