

MS-1601

TMC. NO.	LEAF NO.	DIM. "A"	DIM. "B"	DIM. "C"
MS-1601-1	1	2.063	.500	.187
MS-1601-2	2	2.094	.500	.218
MS-1601-3	3	2.125	.500	.250
MS-1601-4	4	2.156	.500	.281
MS-1601-5	5	2.187	.500	.312
MS-1601-6	5	3.000	.500	.187
MS-1601-7	2	3.031	.500	.218
MS-1601-8	3	3.062	.500	.250
MS-1601-9	4	3.093	.500	.281
MS-1601-10	5	3.125	.500	.312

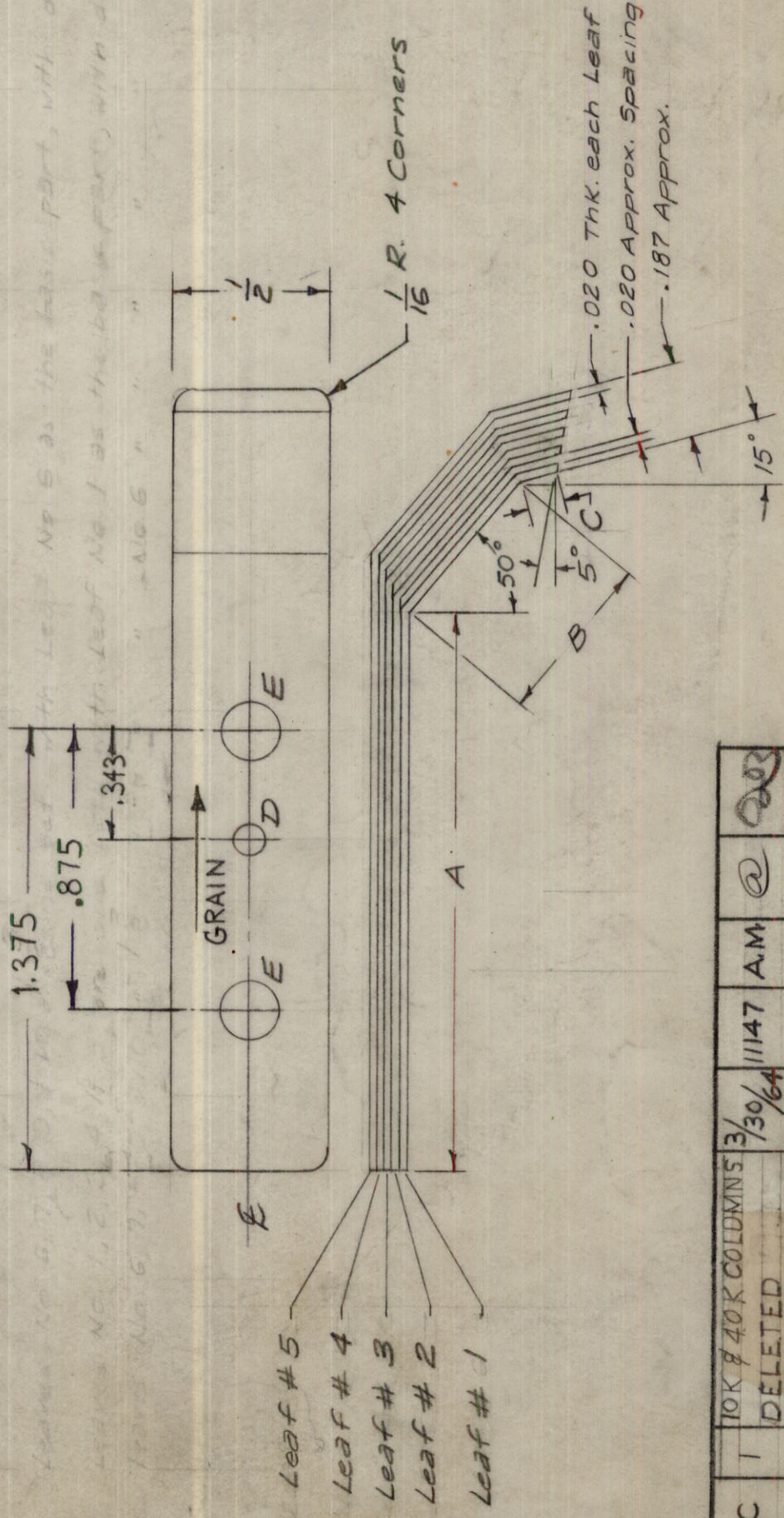
NOTICE TO PERSONS RECEIVING THIS DRAWING

THE TECHNICAL MATERIEL CORPORATION claims proprietary right in the material disclosed hereon. This drawing is issued in confidence for engineering information only and may not be reproduced or used to manufacture anything shown hereon without permission from THE TECHNICAL MATERIEL CORPORATION to the user. This drawing is loaned for mutual assistance and is subject to recall at any time.

Property of:
THE TECHNICAL MATERIEL CORPORATION
MAMARONECK, NEW YORK

HOLES:
D - .109 Diam. 1 Req. per Leaf
E - .203 Diam. 2 Req. per Leaf

NOTE: (HEAT TREATMENT)
600° F FOR 2 HOURS IN CLOSED OVEN
AFTER BENDING AND MACHINING.



ISSUE ITEM	CHANGED FROM	DATE	CH. NO.	DRAFTS	CHECKER	ENG. APP.
C	10K & 40K COLDMINS DELETED	3/30/64	11147	A.M.	@	ARB
B	FRACTIONAL DIM. CHANGED TO DECIMAL EQUIV. ON PICTORIAL	5/10/64	3085	ARB	ARB	ARB
A	TYPE WAS SPRING TEMPER HEAT TREATMENT NOTE ADDED	9-26-60	3085	ARB	ARB	ARB

TOLERANCES
DEC. DIM. ± .005
FRAC. DIM. ± 1/64°
ANGULAR DIM. ± 2°

REQ. PER UNIT	MODEL	PROJECT NO.	ASSY. NO.	DATE

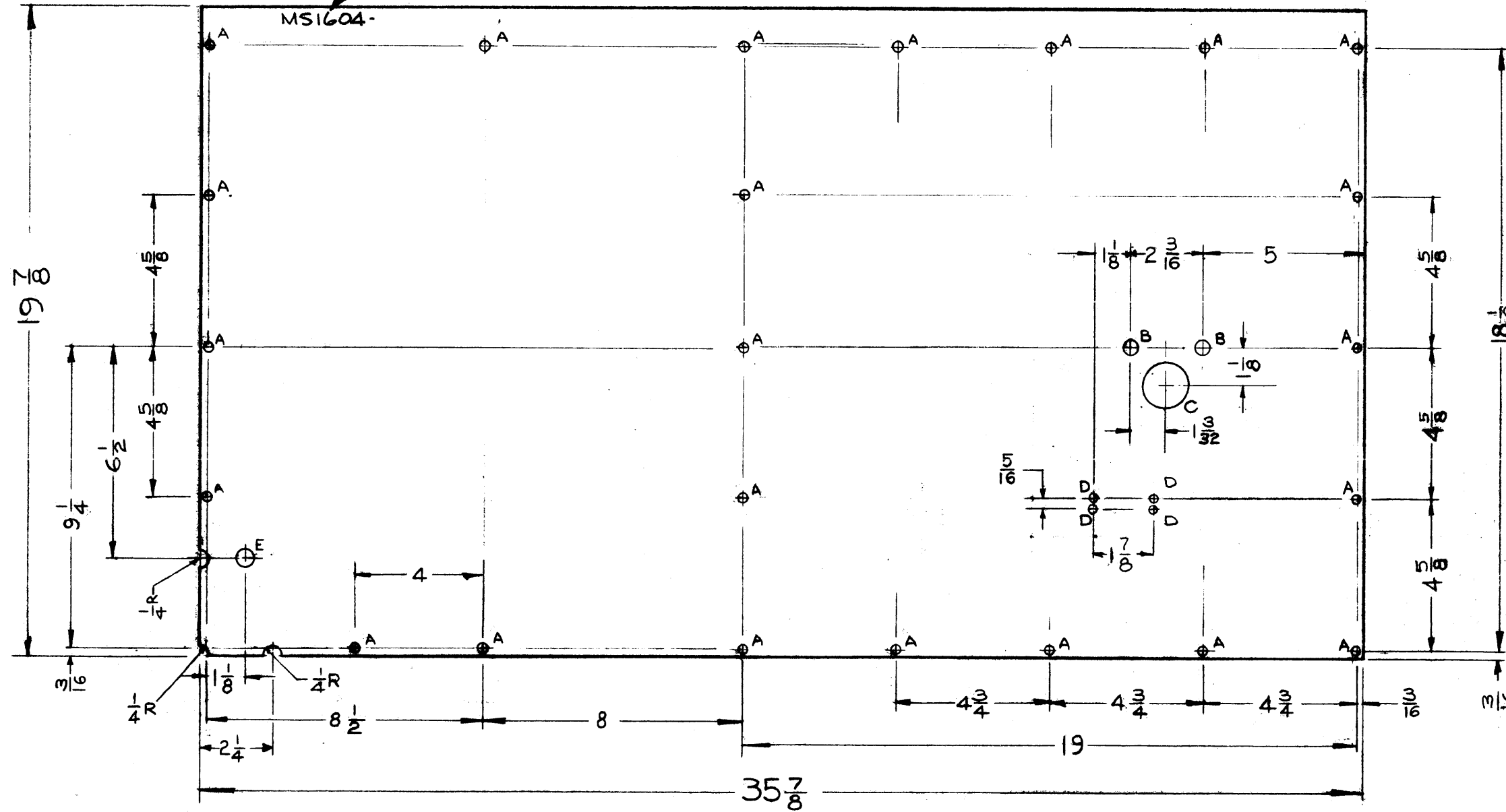
Note: All Three Angles Shown are the Same for All Five Leaves

REQ. ITEM	PART NO.	DESCRIPTION	SYMBOL
	.020 Thk. each	THE TECHNICAL MATERIEL CORP.	
	BERYLLIUM COPPER	MAMARONECK, NEW YORK	
	FULLY HARD	CONTACT, SWITCH, SPRING TYPE	
	SEE NOTE		
	HEAT TREAT. SPEC.		
	.0005 Silver Plate		
	.00025 Rhodium Plate		
	FINISH & SPEC. NO.		
	16 11/16		ARB
	DRAWN	CHECKED	FINAL APPROVAL
	ARB	ARB	MS-1601
			C

MS-1604 D

MARK TMC PT. NO. 1/8 HIGH GOTHIC W/LATEST REV. LETTER.

- A ✓ RIVET HOLE PER REQ. MT 23 REQ.
- B ✓ 3/8 DIA. 2 REQ.
- C ✓ 1-3/8 (1.375) DIA. 1 REQ.
- D ✓ .175 DIA. 4 REQ.
- E ✓ 1/2 (.500) DIA. 1 REQ.



NOTICE TO PERSONS RECEIVING THIS DRAWING

THE TECHNICAL MATERIEL CORPORATION claims proprietary right in the material disclosed hereon. This drawing is issued in confidence for engineering information only and may not be reproduced or used to manufacture anything shown hereon without permission from THE TECHNICAL MATERIEL CORPORATION to the user. This drawing is loaned for mutual assistance and is subject to recall at any time.

Property of:
THE TECHNICAL MATERIEL CORPORATION
MAMARONECK, NEW YORK

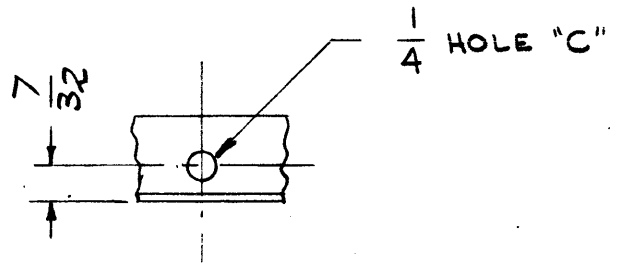
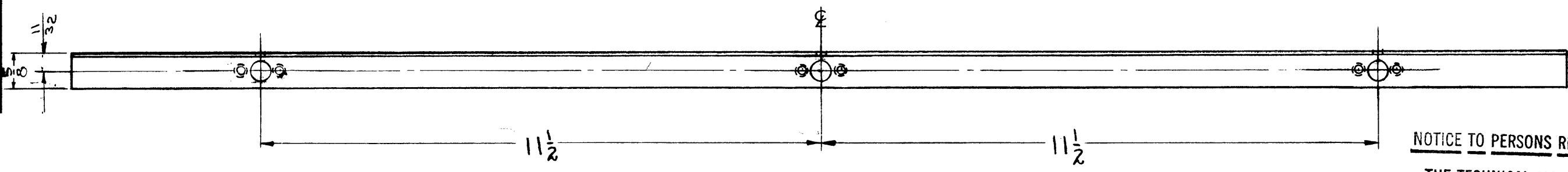
D	1	2 "D" HOLES RELOCATED TMC PT NO E 5404 ADDED	3-23-66	15972	G.D.L.	JCF	
C	1	TWO 1/4 R NOTCHES ADDED	6/2/60	2404	CU	JCF	
B	1	1 3/8 WAS 1 5/16; 3 5/8 WAS 3 1/2 & ADDED CUT "E"	6/12/59			JCF	
A	1	ADDED "D" HOLES (4)	3/27/59		ac	JCF	
ISSUE	ITEM	CHANGED FROM	DATE	CH. NO.	DRAFTS	CHECKER	ENG. APP.
TOLERANCES		SCALE:					
DEC. DIM. ±		MAXIMUM ALLOWABLE TOLERANCES HAVE BEEN DETERMINED AND ANY DEVIATIONS WILL BE CAUSE FOR REJECTION.					
FRAC. DIM. ±		REMOVE ALL BURRS AND SHARP EDGES					
ANGULAR DIM. ±							

1	GPT-10K	AX-181	2-21-59
REQ. PER UNIT	MODEL	PROJECT NO.	ASS'Y. NO.
USED ON			

Ref-4LD-551

REQ. ITEM	PART NO.	DESCRIPTION	SYMBOL
	.064	THE TECHNICAL MATERIEL CORP.	
	STOCK SIZE	MAMARONECK, NEW YORK	
	ALUMINUM	TOP SHIELD, AUX. FRAME	
	MATERIAL		
	5052-H32		
	TYPE & TEMPER	HEAT TREAT. SPEC.	
	IRIDITE, S404		
	FINISH & SPEC. NO.	ELEC. DES. APP.	MECH. DES. APP.

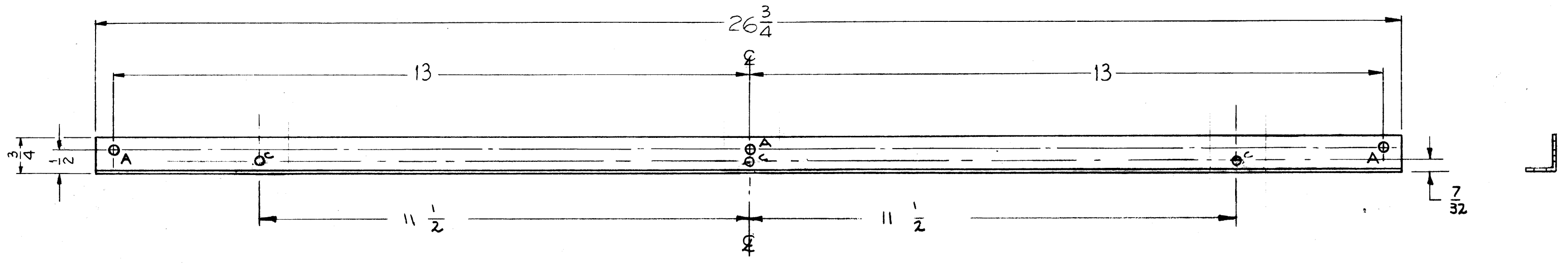
MS-1606D



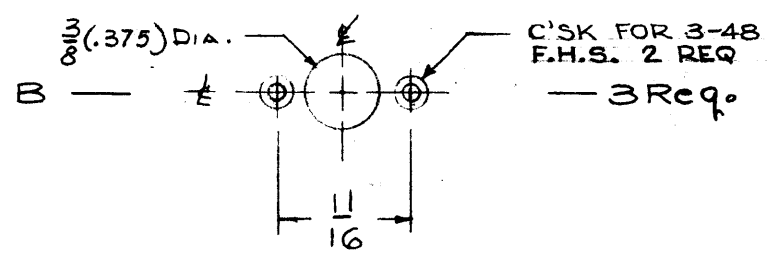
NOTICE TO PERSONS RECEIVING THIS DRAWING

THE TECHNICAL MATERIEL CORPORATION claims proprietary right in the material disclosed hereon. This drawing is issued in confidence for engineering information only and may not be reproduced or used to manufacture anything shown hereon without permission from THE TECHNICAL MATERIEL CORPORATION to the user. This drawing is loaned for mutual assistance and is subject to recall at any time.

Property of:
THE TECHNICAL MATERIEL CORPORATION
MAMARONECK, NEW YORK



A - 3/16 (.187) DIA. 3 Req.



C - 1/4 (.250) D. HOLES 3 REQ'D.

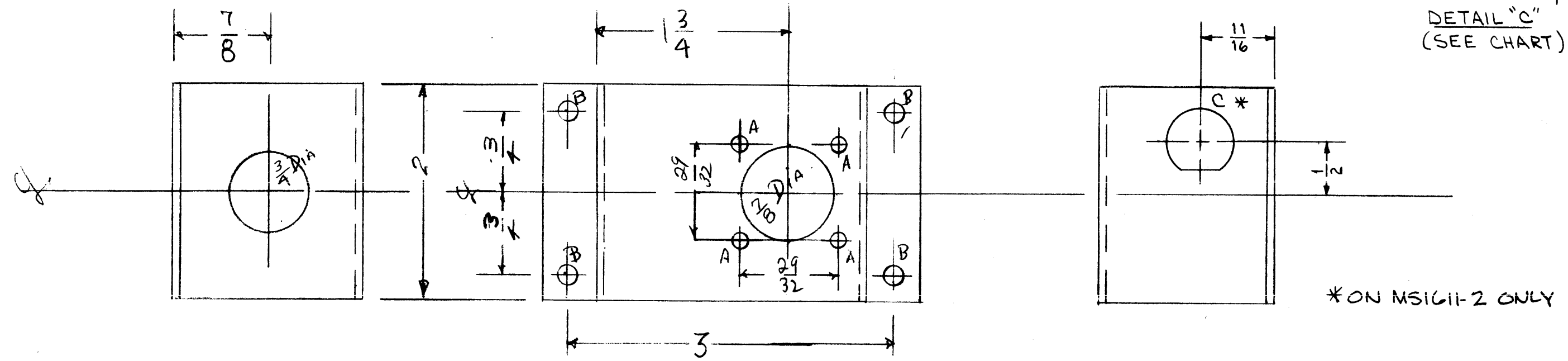
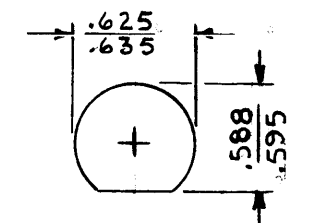
D	2	ON BY DETAIL C'SK WAS FOR 4-40 DELETED ITEM (0) NT-117-0832-A	4-23-63	8852		MY	
C	1	ADDED 3 'C' HOLES 1/4 DIAM.	1-15-59	1538	Phel		
B	1	DIM. CHG. 11 1/2 WAS 10	4/2/59	1080	AC		
A	1	B' HOLE & IT-1 WAS FOR SM: 107-33	4/10/59				
ISSUE	ITEM	CHANGED FR M	DATE	CH. NO.	DRAFTS	CHECKER	ENG. APP.

TOLERANCES		SCALE:
DEC. DIM. ±	MAXIMUM ALLOWABLE TOLERANCES HAVE BEEN DETERMINED AND ANY DEVIATIONS WILL BE CAUSE FOR REJECTION: REMOVE ALL BURRS AND HARP ED ES	
FRAC. DIM. ±		
AN ULAR DIM. ±		

1	GPT 10K	AX-173		2-24-59
REQ. PER UNIT	MODEL	PROJECT NO.	A Y. NO.	DATE
USED ON				

REQ.	ITEM	PART NO.	DESCRIPTION	SYMBOL
		.064	THE TECHNICAL MATERIEL CORP.	
		STOCK SIZE	MAMARONECK, NEW YORK	
		ALUMINUM	BRACKET, SUPPORT	
		MATERIAL	TOP WINDOW PANEL	
		5052-H32	J.C. BIELE	
		TYPE & TEMPER	DRAWN	
		HEATTREAT. SPEC.	CHECKED	
		3-404 TRIDITE		
		FINISH & SPEC. NO.	DES. APP.	
				MS-1606D

MS-1611	TMC PART/NO.	"C" DETAIL
	MS 1611	NONE
	MS 1611-2	1



* ON MS1611-2 ONLY

HOLE LEGEND		
HOLE	DESCRIPTION	REQ
A	5/32 DIA.	4
B	13/64 DIA.	4
C	SEE DETAIL (SEE CHART)	1

NOTICE TO PERSONS RECEIVING THIS DRAWING

THE TECHNICAL MATERIEL CORPORATION claims proprietary right in the material disclosed hereon. This drawing is issued in confidence for engineering information only and may not be reproduced or used to manufacture anything shown hereon without permission from THE TECHNICAL MATERIEL CORPORATION to the user. This drawing is loaned for mutual assistance and is subject to recall at any time.

Property of:
THE TECHNICAL MATERIEL CORPORATION
MAMARONECK, NEW YORK

1LD 1507, MS 1611-2
1LD 2048
1LD-530 (TOP CAP. BKT)
REF. = 1LD-547 (BOTTOM CAP. BKT.)

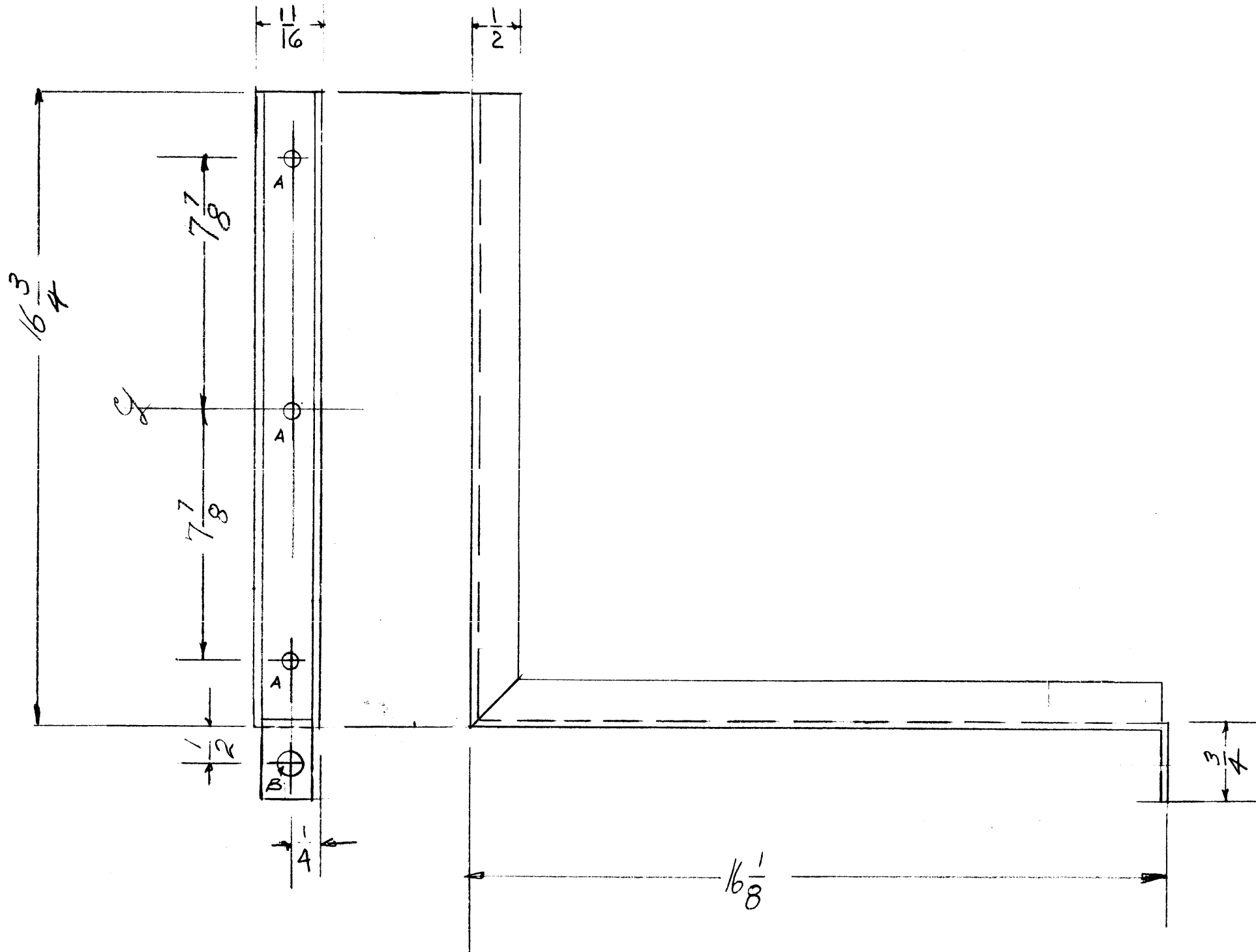
ISSUE	ITEM	CHANGED FROM	DATE	CH. NO.	DRAFTS	CHECKER	ENG. APP.
B		ADD "C" HOLE. ADD P/N CHART. & LD 1507 & MS11612	12-13-66	17460	RME	<i>JCB</i>	<i>MM</i>
A		CLERICAL CHANGE	1-24-66		HLA	<i>JCB</i>	<i>MM</i>

TOLERANCES		SCALE:
DEC. DIM. ±		MAXIMUM ALLOWABLE TOLERANCES HAVE BEEN DETERMINED AND ANY DEVIATIONS WILL BE CAUSE FOR REJECTION. REMOVE ALL BURRS AND SHARP EDGES
FRAC. DIM. ±		
ANGULAR DIM. ±		

REQ. PER UNIT	MODEL	PROJECT NO.	ASS'Y. NO.	DATE
1	KIT 180	MAIN FR		1-24-66
2	GPT-10K	AUX. FR		2-25-59

REQ. ITEM	PART NO.	DESCRIPTION	SYMBOL
	064	THE TECHNICAL MATERIEL CORP. MAMARONECK, NEW YORK	
	Aluminum	Fan Cap. BKT.	
	60525-1132		
	IRIDITE S404		

MS-1612 A



A - $\frac{11}{64}$ (.171) DIA HOLE 3 REQ.
 B - $\frac{13}{64}$ (.203) DIA HOLE 1 REQ.

NOTICE TO PERSONS RECEIVING THIS DRAWING

THE TECHNICAL MATERIEL CORPORATION claims proprietary right in the material disclosed hereon. This drawing is issued in confidence for engineering information only and may not be reproduced or used to manufacture anything shown hereon without permission from THE TECHNICAL MATERIEL CORPORATION to the user. This drawing is loaned for mutual assistance and is subject to recall at any time.

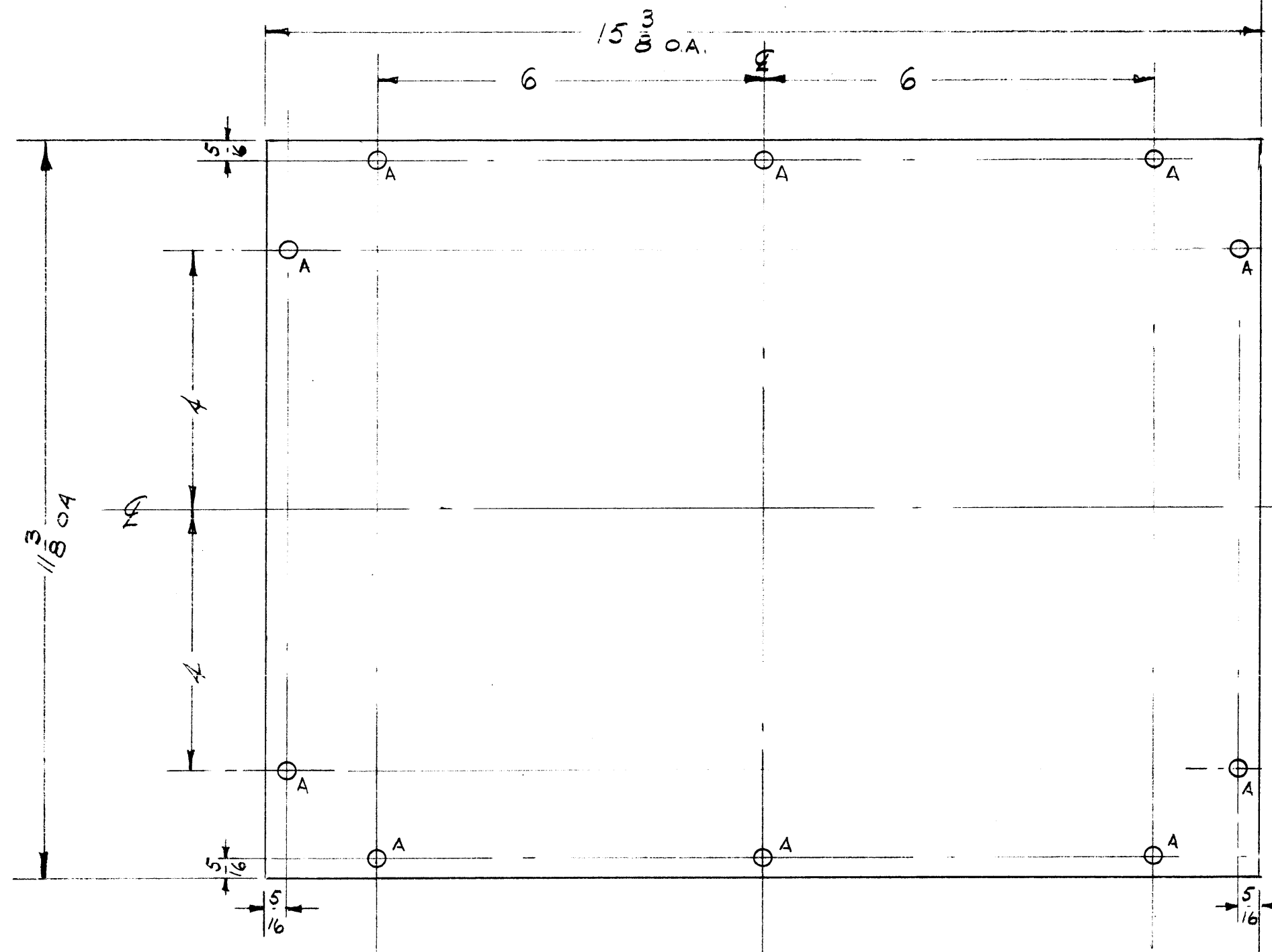
Property of:
 THE TECHNICAL MATERIEL CORPORATION
 MAMARONECK, NEW YORK

ISSUE	ITEM	CHANGED FROM	DATE	CH. NO.	DRAFTS	CHECKER	ENG. APP.
A	1	"A" Holes were 1/8 DIA	3/31/59		fo		ab
TOLERANCES			SCALE:				
DEC. DIM. ±			MAXIMUM ALLOWABLE TOLERANCES HAVE BEEN DETERMINED AND ANY DEVIATIONS WILL BE CAUSE FOR REJECTION.				
FRAC. DIM. ±			REMOVE ALL BURRS AND SHARP EDGES				
ANGULAR DIM. ±							

REQ. PER UNIT	MODEL	PROJECT NO.	ASS'Y. NO.	DATE
1	GPT-10K	AUX. FRAME		
USED ON				

REQ. ITEM	PART NO.	DESCRIPTION	SYMBOL
	.064	THE TECHNICAL MATERIEL CORP.	
	STOCK SIZE	MAMARONECK, NEW YORK	
	ALUMINUM	FAN FRAME	
	5052 H32		
	TYPE & TEMPER	HEAT TREAT. SPEC.	DRAWN
	IRIDITE S704		CHECKED
	FINISH & SPEC. NO.	ELEC. DES. APP.	MECH. DES. APP.
			MS-1612 A

MS-1616



A - 1/64 DIA 10 REQ'D.

NOTICE TO PERSONS RECEIVING THIS DRAWING

THE TECHNICAL MATERIEL CORPORATION claims proprietary right in the material disclosed hereon. This drawing is issued in confidence for engineering information only and may not be reproduced or used to manufacture anything shown hereon without permission from THE TECHNICAL MATERIEL CORPORATION to the user. This drawing is loaned for mutual assistance and is subject to recall at any time.

Property of:
THE TECHNICAL MATERIEL CORPORATION
MAMARONECK, NEW YORK

Ref-4LD-546

ISSUE	ITEM	CHANGED FROM	DATE	CH. NO.	DRAFTS	CHECKER	ENG. APP.

TOLERANCES: DEC. DIM. ±, FAC. DIM. ±, ANGULAR DIM. ±

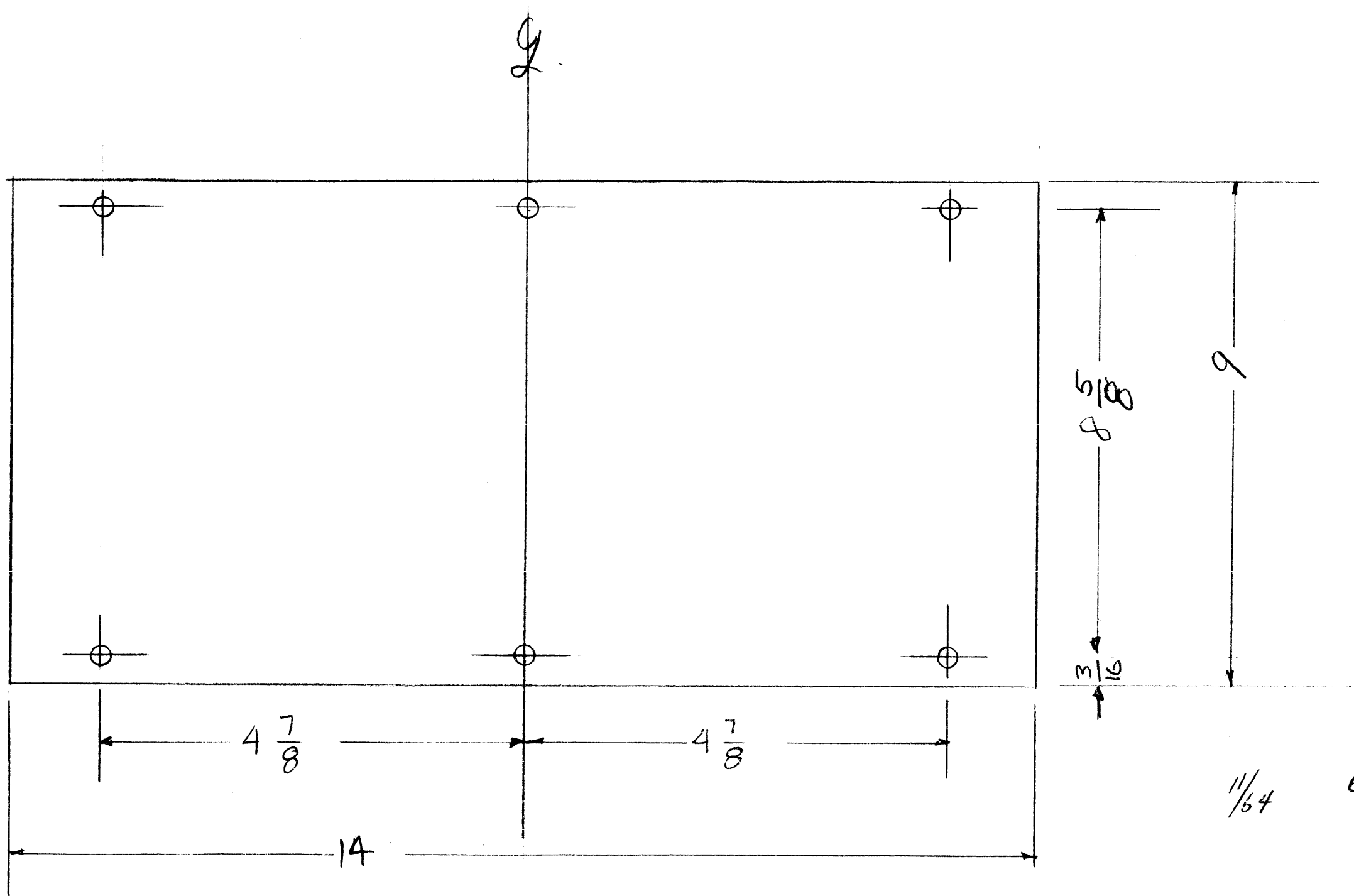
SCALE: MAXIMUM ALLOWABLE TOLERANCES HAVE BEEN DETERMINED AND ANY DEVIATIONS WILL BE CAUSE FOR REJECTION. REMOVE ALL BURRS AND SHARP EDGES

1	GPT-10K	PROJECT NO.	ASS'Y. NO.	2-26-59	DATE
REQ. PER UNIT	MODEL	PROJECT NO.	ASS'Y. NO.	DATE	

REQ. ITEM	PART NO.	DESCRIPTION	SYMBOL
.081 THICK		THE TECHNICAL MATERIEL CORP.	
STOCK SIZE		MAMARONECK, NEW YORK	
ALUMINUM		TOP COVER	
MATERIAL		LINE FILTER	GPT-10K
5052-H32			
TYPE & TEMPER	HEAT TREAT. SPEC.	DRAWN	CHECKED
5404 IRIDITE			
FINISH & SPEC. NO.		ELEC. DES. APP.	MECH. DES. APP.

MS-1616

MS-1625



NOTICE TO PERSONS RECEIVING THIS DRAWING

THE TECHNICAL MATERIEL CORPORATION claims proprietary right in the material disclosed hereon. This drawing is issued in confidence for engineering information only and may not be reproduced or used to manufacture anything shown hereon without permission from THE TECHNICAL MATERIEL CORPORATION to the user. This drawing is loaned for mutual assistance and is subject to recall at any time.

Property of:
THE TECHNICAL MATERIEL CORPORATION
MAMARONECK, NEW YORK

$\frac{11}{64}$ 6 holes.

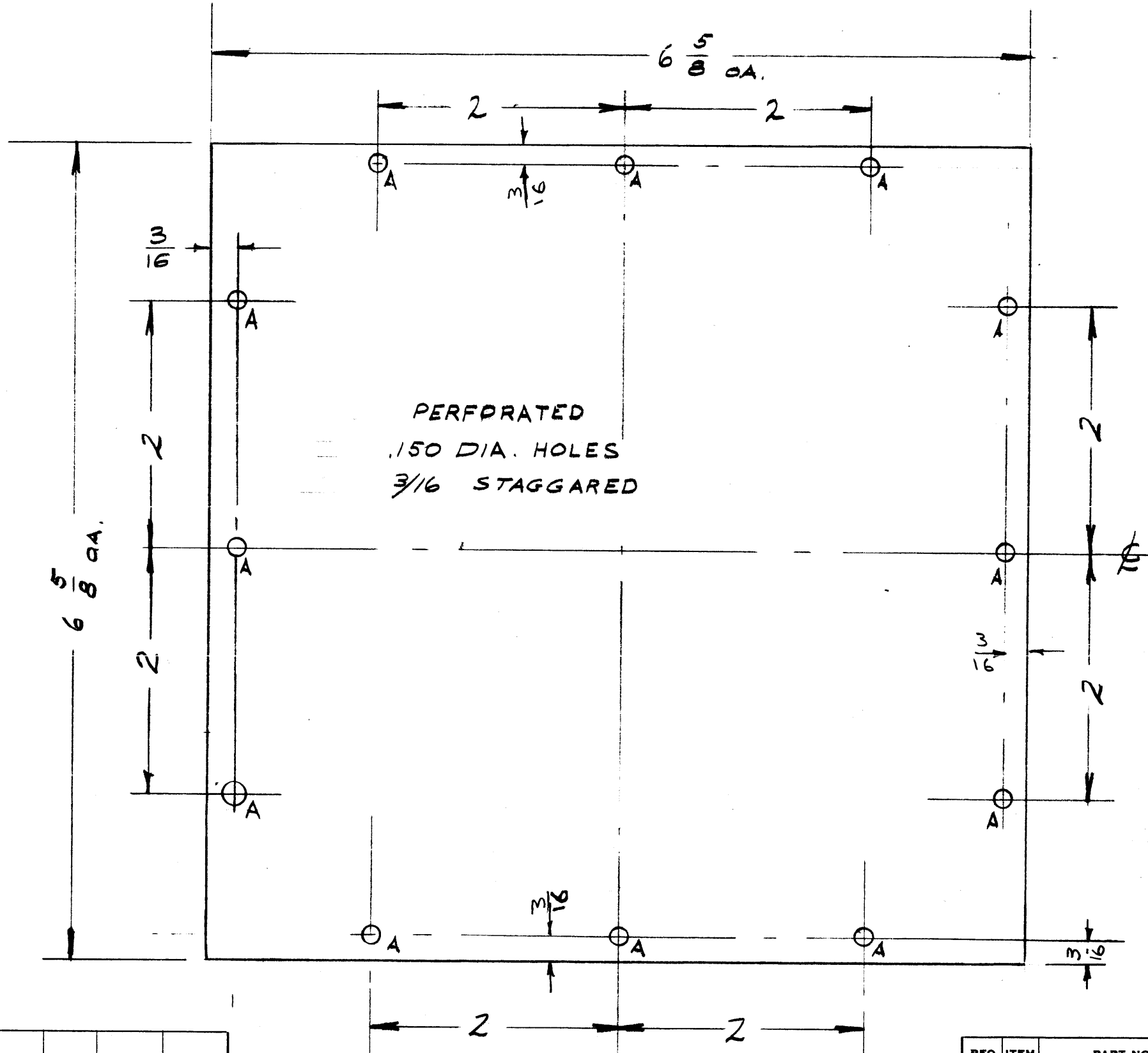
ISSUE	ITEM	CHANGED FROM	DATE	CH. NO.	DRAFTS	CHECKER	ENG. APP.
TOLERANCES			SCALE:				
DEC. DIM. \pm			MAXIMUM ALLOWABLE TOLERANCES HAVE BEEN DETERMINED AND ANY DEVIATIONS WILL BE CAUSE FOR REJECTION. REMOVE ALL BURRS AND SHARP EDGES				
FRAC. DIM. \pm							
ANGULAR DIM. \pm							

1	GPT-10K	SP-12A	2-26-59
REQ. PER UNIT	MODEL	PROJECT NO.	ASS'Y. NO.
USED ON			

REQ. ITEM	PART NO.	DESCRIPTION	SYMBOL
.064		THE TECHNICAL MATERIEL CORP. MAMARONECK, NEW YORK	
	STOCK SIZE		
ALUMINUM		Bottom Cover	
	MATERIAL	PS-12 A	GPT-10K
5052-H32			
TYPE & TEMPER	HEAT TREAT. SPEC.	DRAWN	CHECKED
IRIDITE			
FINISH & SPEC. NO.	ELEC. DES. APP.	MECH. DES. APP.	MS-1625

MS-1641

A - 13/64 (.203) DIA. 12 REQ'D.



PERFORATED
.150 DIA. HOLES
3/16 STAGGARED

NOTICE TO PERSONS RECEIVING THIS DRAWING

THE TECHNICAL MATERIEL CORPORATION claims proprietary right in the material disclosed hereon. This drawing is issued in confidence for engineering information only and may not be reproduced or used to manufacture anything shown hereon without permission from THE TECHNICAL MATERIEL CORPORATION to the user. This drawing is loaned for mutual assistance and is subject to recall at any time.

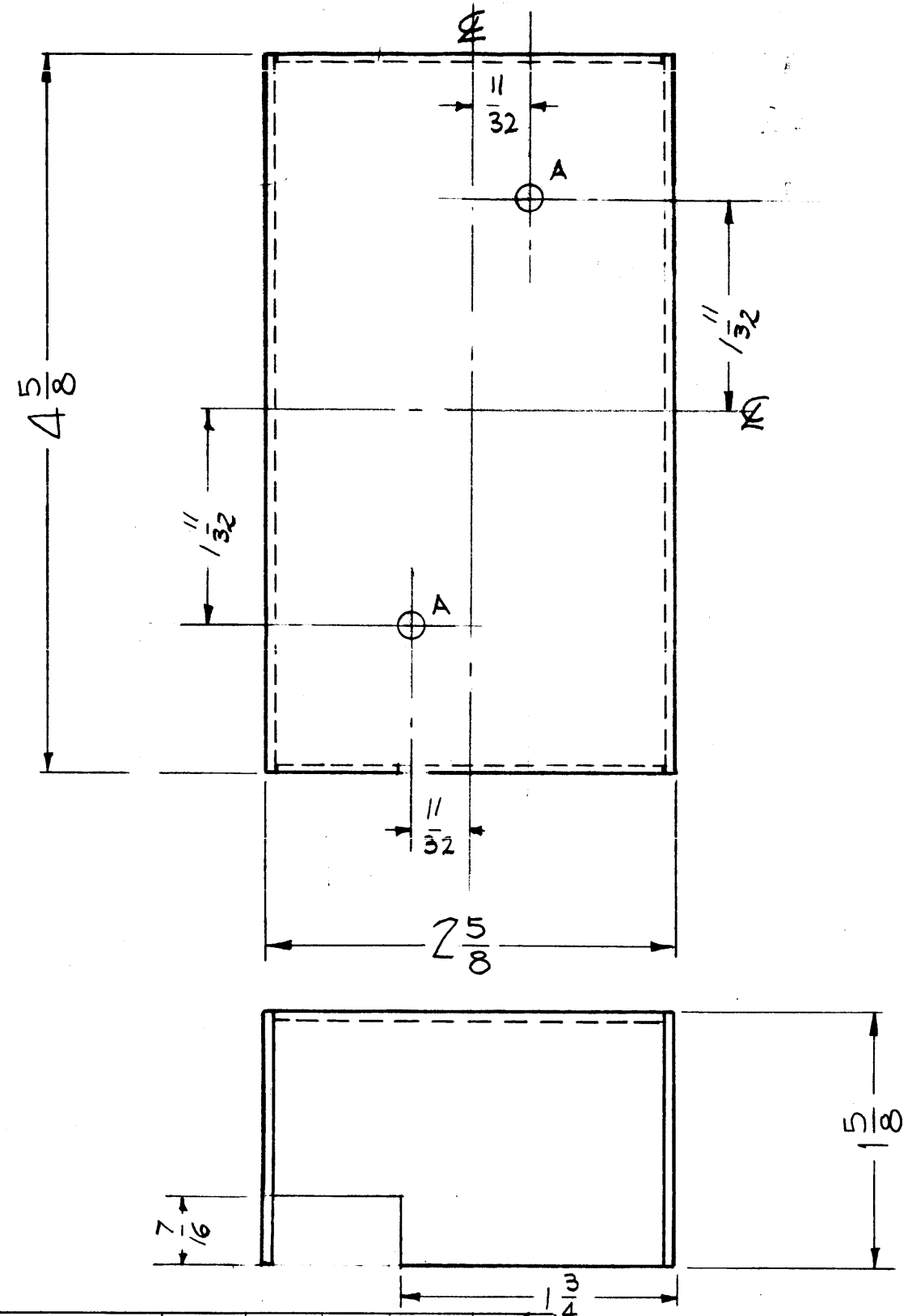
Property of:
THE TECHNICAL MATERIEL CORPORATION
MAMARONECK, NEW YORK

ISSUE	ITEM	CHANGED FROM	DATE	CH. NO.	DRAFTS	CHECKER	ENG. APP.
B	1	2" WAS 1 1/2" "A" HOLE MOVED	5/12/59		16	<i>[Signature]</i>	<i>[Signature]</i>
A	1	"A" WAS 9/64	4-10-59		acc	<i>[Signature]</i>	<i>[Signature]</i>
TOLERANCES			SCALE:				
DEC. DIM. ±			MAXIMUM ALLOWABLE TOLERANCES HAVE BEEN DETERMINED AND ANY DEVIATIONS WILL BE CAUSE FOR REJECTION.				
FRAC. DIM. ± 1/64			REMOVE ALL BURRS AND SHARP EDGES				
ANGULAR DIM. ±							

1	GPT-10 K	AX-137			2-18-59
REQ. PER UNIT	MODEL	PROJECT NO.	ASS'Y. NO.	DATE	
USED ON					

REQ. ITEM	PART NO.	DESCRIPTION	SYMBOL
	.064 THICK STOCK SIZE	THE TECHNICAL MATERIEL CORP. MAMARONECK, NEW YORK	
	ALUMINUM	COVER, BLOWER FLANGE	
	5052-H32		
TYPE & TEMPER	HEAT TREAT. SPEC.	DRAWN	CHECKED
IRIDITE		<i>[Signature]</i>	<i>[Signature]</i>
FINISH & SPEC. NO.	ELEC. DES. APP.	MECH. DES. APP.	
			MS-1641 B

MS-1644 D



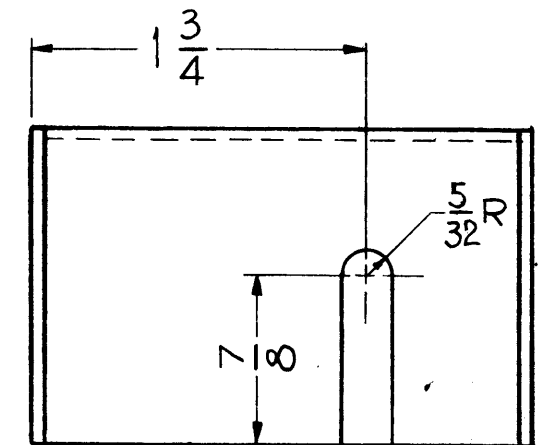
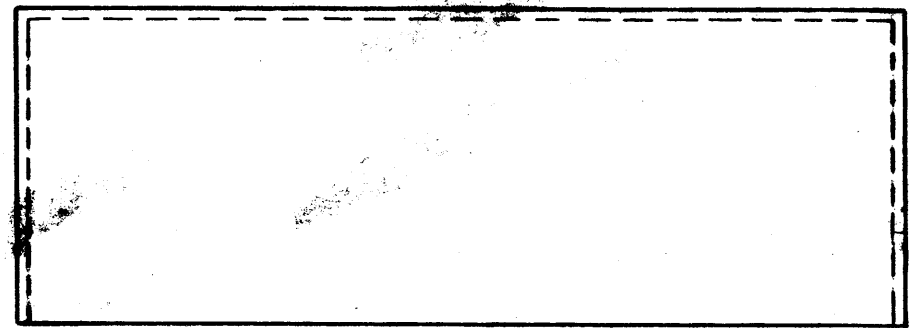
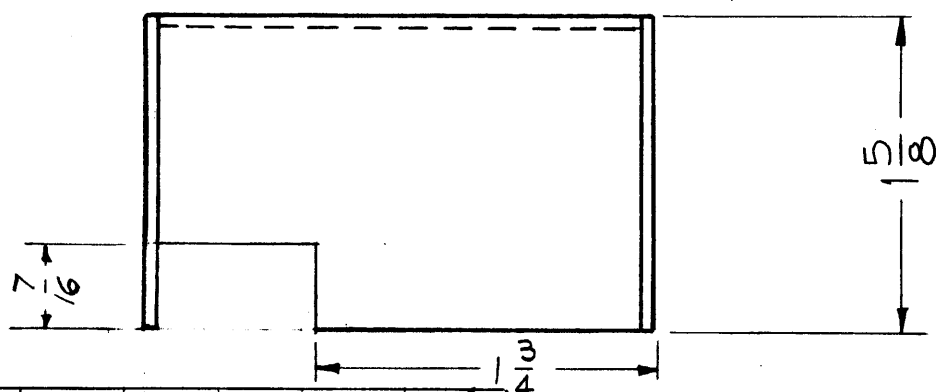
A ~ 5/32 (.156) DIA.

2 Req.

NOTICE TO PERSONS RECEIVING THIS DRAWING

THE TECHNICAL MATERIEL CORPORATION claims proprietary right in the material disclosed hereon. This drawing is issued in confidence for engineering information only and may not be reproduced or used to manufacture anything shown hereon without permission from THE TECHNICAL MATERIEL CORPORATION to the user. This drawing is loaned for mutual assistance and is subject to recall at any time.

Property of:
THE TECHNICAL MATERIEL CORPORATION
MAMARONECK, NEW YORK



ISSUE	ITEM	CHANGED FROM	DATE	CH. NO.	DRAFTS	CHECKER	ENG. APP.
D	1	5/32 R. DIM WAS 1/8	7-14-61	5244	GDL	M.A.F.	[Signature]
C	1	LIP DETAIL CLARIFICATION	9-9-60	2930	cus	[Signature]	[Signature]
B	2	CUTOUT ADDED	4/3/59		[Signature]	[Signature]	[Signature]
A	1	slot added	3/19/59		J.C.B	[Signature]	[Signature]

TOLERANCES		SCALE:
DEC. DIM. ±	MAXIMUM ALLOWABLE TOLERANCES HAVE BEEN DETERMINED AND ANY DEVIATIONS WILL BE CAUSE FOR REJECTION.	
FRAC. DIM. ±	REMOVE ALL BURRS AND SHARP EDGES	
ANGULAR DIM. ±		

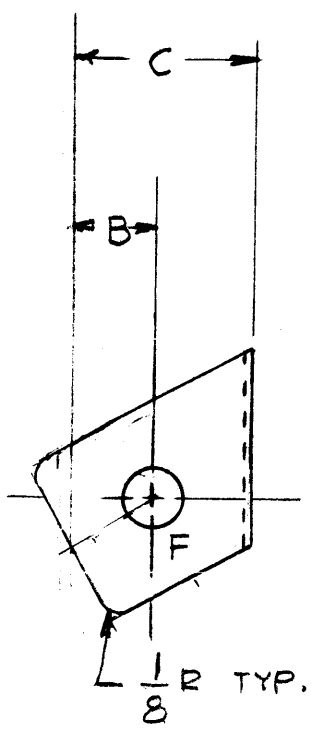
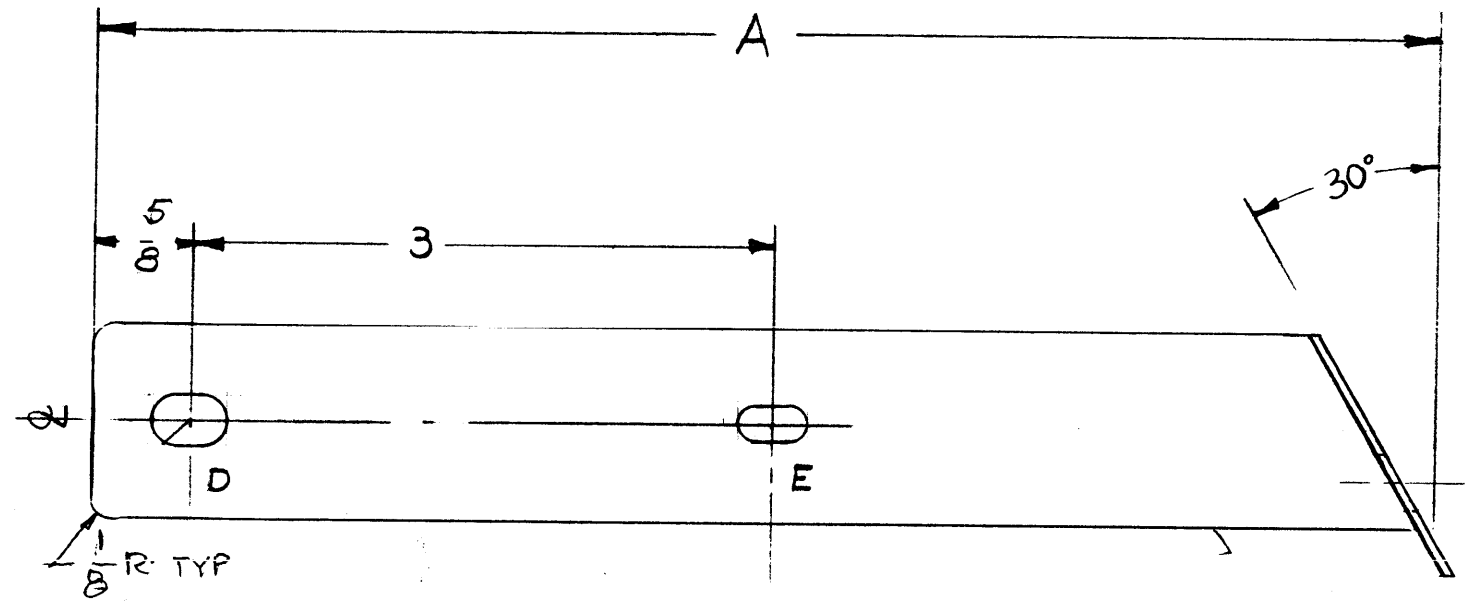
1	GPT 10K	AX-137	3 ~ 3 ~ 5
REQ. PER UNIT	MODEL	PROJECT N.	ASS'Y. NO.
			DATE

Ref: 1LD-578

REQ. ITEM	PART NO.	DESCRIPTION	SYMBOL
	.064	THE TECHNICAL MATERIEL CORP.	
	STOCK SIZE	MAMARONECK, NEW YORK	
	ALUMINUM	COVER, MONITOR BOARD	
	MATERIAL		
5052-H32		J.C. BIELE	[Signature]
TYPE & TEMPER	HEAT TREAT. SPEC.	DRAWN	CHECKED
S-404 IRIDITE		[Signature]	[Signature]
FINISH & SPEC. NO.	ELEC. DES. APP.	MECH. DES. APP.	MS-1644 D

MS-1650 F

DIMENSIONS	A	B	C
MS-1650-1	7	1/2	1
-2	6 31/32	15/32	31/32
-3	6 5/16	7/16	15/16
-4	6 29/32	13/32	29/32
-5	6 7/8	3/8	7/8



D - 1/4 x 3/8 SLOT 1 REQ'D
 E - 1/64 x 3/8 SLOT 1 "
 F - 5/16 DIA. 1 "

FINISH: SILVER PLATE .0003
 & CLEAR IRIDITE

NOTICE TO PERSONS RECEIVING THIS DRAWING

THE TECHNICAL MATERIEL CORPORATION claims proprietary right in the material disclosed herein. This drawing is issued in confidence and containing information only and may not be used or used to manufacture any kind shown hereon without permission from THE TECHNICAL MATERIEL CORPORATION to the user. This drawing is loaned for mutual assistance and is subject to recall at any time.

Property of:
 THE TECHNICAL MATERIEL CORPORATION
 MAMARONECK, NEW YORK

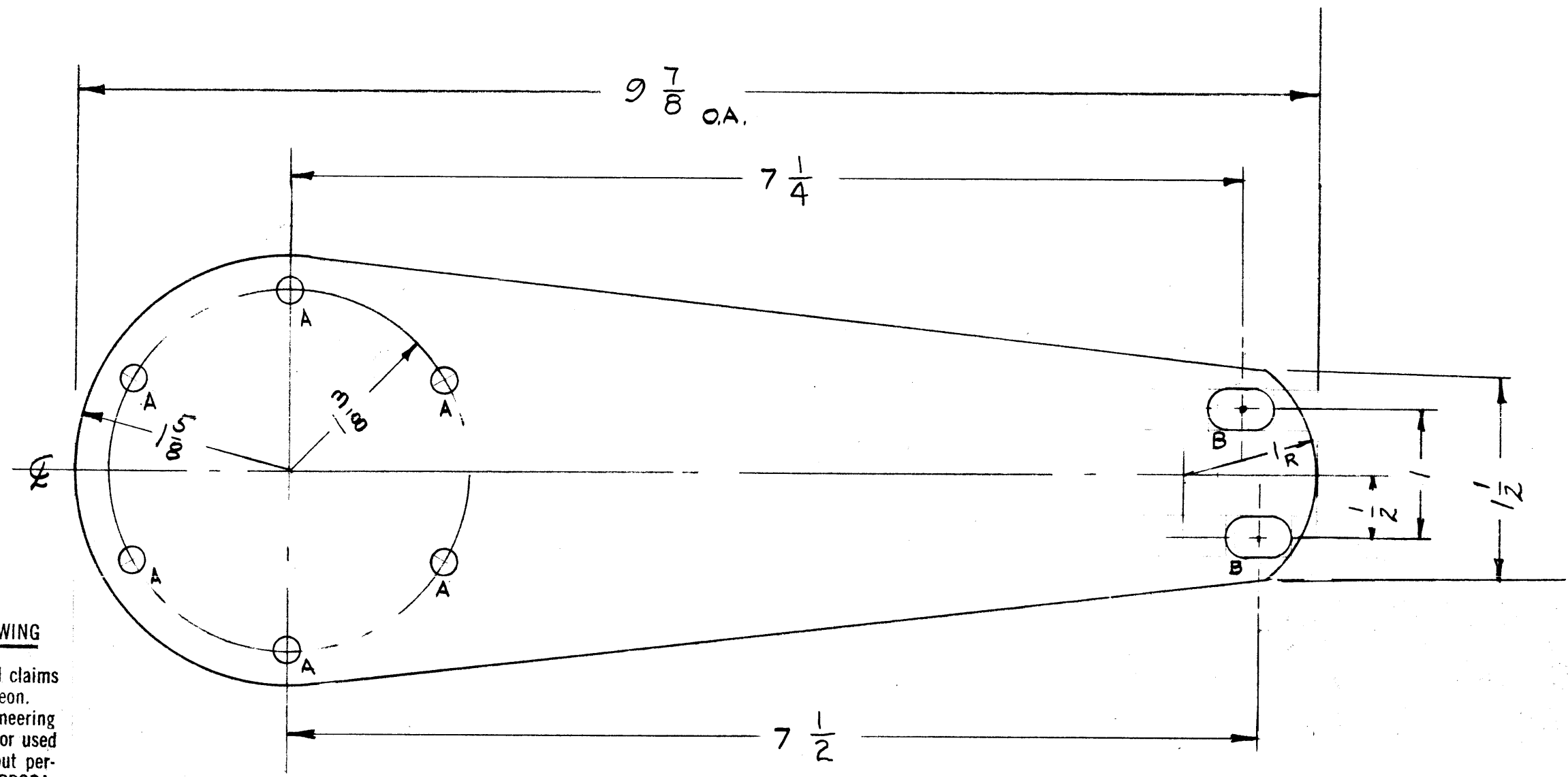
ISSUE	ITEM	CHANGED FROM	DATE	CH. NO.	DRAFTS	CHECKER	ENG. APP.
F	1	ON SLOTTED END 1/8 R WAS 1/2 R	2-19-91		CDL	T. C	
E	1	ON SLOTTED END, 1/2 R WAS (2) 1/8 R (CORNERS)	3-7-63	8407			
D	1	1/2 R WAS (2) 1/8 CORNER RADIUS	1-4-62	6147	LL		
C	1	1/8 R WAS 1/4 R	9-7-60	2907	RU		
B	1	1/4 R WAS 1/8 R	5-26-60	2375	A		
A	1	1/32 TO .016 STOCK SIZE 1/2 TO 5/8	3/25/59		IDRILL		

TOLERANCES		SCALE:
DEC. DIM. ±		MAXIMUM ALLOWABLE TOLERANCES HAVE BEEN DETERMINED AND ANY DEVIATIONS WILL BE CAUSE FOR REJECTION. REMOVE ALL BURRS AND SHARP EDGES
FRAC. DIM. ±		
ANGULAR DIM. ±		

REQ. PER UNIT	MODEL	PROJECT NO.	ASS'Y. NO.	DATE
1 EACH	GPT-10K	A X-137		3-5-59
USED ON				

REQ. ITEM	PART NO.	DESCRIPTION	SYMBOL
	.016 STOCK SIZE	THE TECHNICAL MATERIEL CORP. MAMARONECK, NEW YORK	
	COPPER	R.F. CONNECTOR STRAPS	
	SOFT	GPT-10K	
	TYPE & TEMPER	HEAT TREAT. SPEC.	
	SEE NOTE		
	FINISH & SPEC. NO.	ELEC. DES. APP.	MECH. DES. APP.

MS 1651 B



NOTICE TO PERSONS RECEIVING THIS DRAWING

THE TECHNICAL MATERIEL CORPORATION claims proprietary right in the material disclosed hereon. This drawing is issued in confidence for engineering information only and may not be reproduced or used to manufacture anything shown hereon without permission from THE TECHNICAL MATERIEL CORPORATION to the user. This drawing is loaned for mutual assistance and is subject to recall at any time.

Property of:
THE TECHNICAL MATERIEL CORPORATION
 MAMARONECK, NEW YORK

FINISH: SILVER PLATE .0003
 & CLEAR IRIDITE

- A - 3/16 DIA. 60° APAPT 6 REQ'D.
- B - 5/16 x 5/8 SLOTS 2 REQ'D.

B	9 7/8 WAS 9 3/4 (CENTER TOP) 7 1/4 WAS 7 1/8 (CENTER TOP) 7 1/2 WAS 7 3/8 (CENTER BOT) SLOTS WERE 5/16 X 1/2	6-26-62	6819	R.T.	JLH	ORB	
A	9 3/4 WAS 9 1/2 "B" WAS 3/8 D. ADDED 7 1/2 x 7 3/8	9/24/59	1341	R.D.	JLH	ORB	
ISSUE	ITEM	CHANGED FROM	DATE	CH. NO.	DRAFTS	CHECKER	ENG. APP.

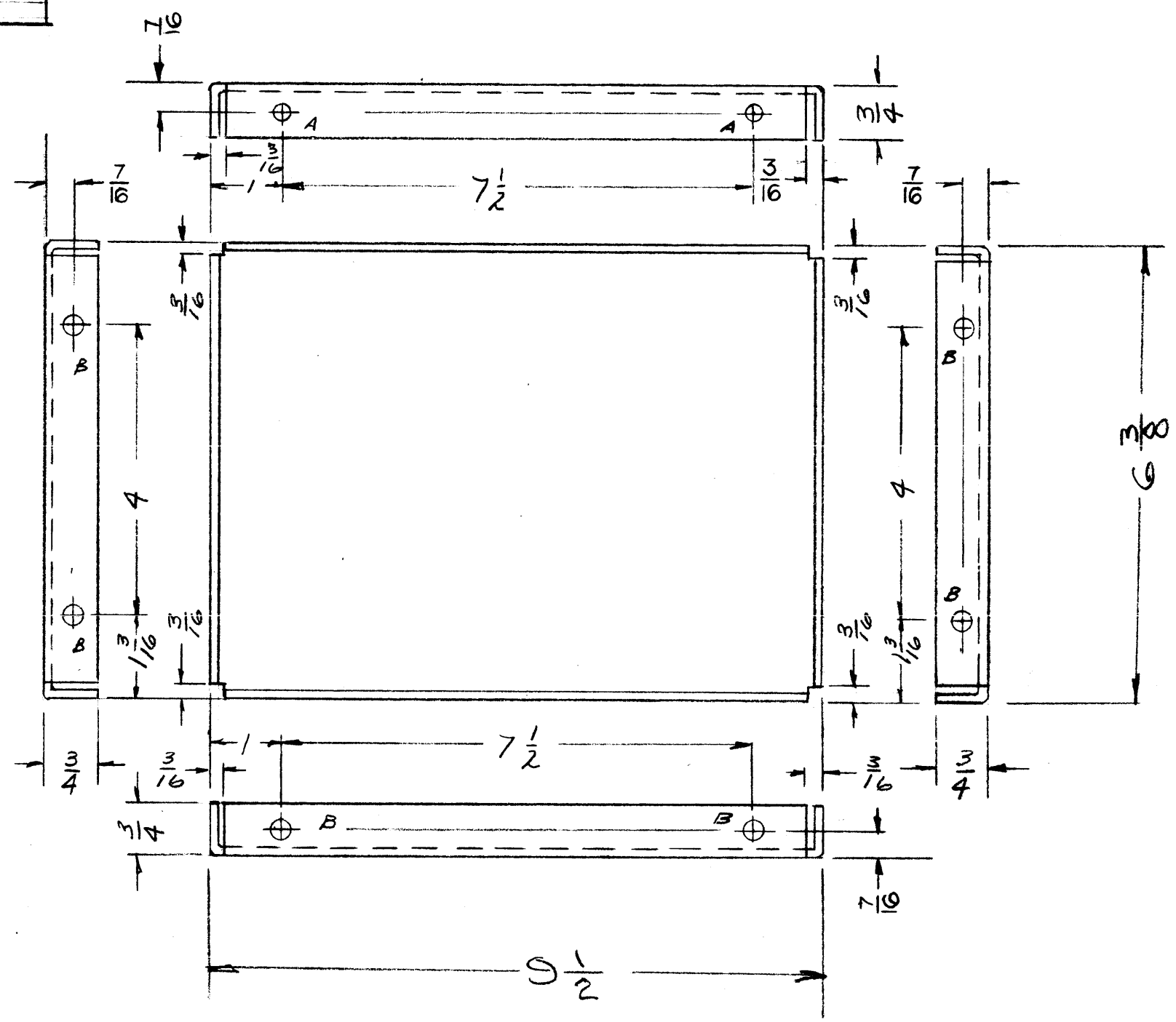
TOLERANCES		SCALE:	
DEC. DIM. ±	MAXIMUM ALLOWABLE TOLERANCES HAVE BEEN DETERMINED AND ANY DEVIATIONS WILL BE CAUSE FOR REJECTION. REMOVE ALL BURRS AND SHARP EDGES	GPT-10K TRF DECK	
FRAC. DIM. ±		REQ. PER UNIT	MODEL
ANGULAR DIM. ±			PROJECT NO.

REQ. PER UNIT	MODEL	PROJECT NO.	ASS'Y. NO.	DATE
				3-5-59
USED ON				

REQ. ITEM	PART NO.	DESCRIPTION		SYMBOL
1/32		THE TECHNICAL MATERIEL CORP. MAMARONECK, NEW YORK		
COPPER		RF CONNECTOR STRAPS		
		GPT-10K		
		TORILLO	JLH	ORB
TYPE & TEMPER	HEAT TREAT. SPEC.	DRAWN	CHECKED	FINAL APPROVAL
SEE NOTE		ORB	ORB	MS 1651
FINISH & SPEC. NO.		ELEC. DES. APP.	MECH. DES. APP.	B

MS-1668 D

FINISH	
S404	YELLOW IRIDITE
S114	ZINC CHROMATE
S520	TMC BLUE-GREY TEXTURED PAINT.



HOLE LEGEND

A - $\frac{13}{64}$ (.203) DIA 2 REQ.

B - .221-.224 DIA 6 REQ.

FOR NT-129-832-6

NOTICE TO PERSONS RECEIVING THIS DRAWING

THE TECHNICAL MATERIEL CORPORATION claims proprietary right in the material disclosed hereon. This drawing is issued in confidence for engineering information only and may not be reproduced or used to manufacture anything shown hereon without permission from THE TECHNICAL MATERIEL CORPORATION to the user. This drawing is loaned for mutual assistance and is subject to recall at any time.

Property of:
 THE TECHNICAL MATERIEL CORPORATION
 MAMARONECK, NEW YORK

ALL BENDS $\frac{1}{8}$ R.

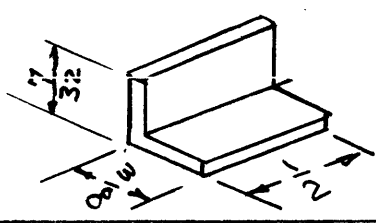
D	1	FINISH WAS S520	3-23-64	11073	A.M.	@	<i>EMN</i>
C	1	(4) 7/16 WERE 3/8	3-15-6		CM		<i>unc</i>
B	1	FINISH CHART ADDED	3-11-60		MB		<i>unc</i>
A	1	S-404 WAS S-101	12/15/59	1001	MB		EMN
ISSUE	ITEM	CHANGED FROM	DATE	CH. NO.	DRAFTS	CHECKER	ENG. APP.

TOLERANCES		SCALE: <i>1/16</i>
DEC. DIM. \pm		MAXIMUM ALLOWABLE TOLERANCES HAVE BEEN DETERMINED AND ANY DEVIATIONS WILL BE CAUSE FOR REJECTION. REMOVE ALL BURRS AND SHARP EDGES
FRAC. DIM. \pm		
ANGULAR DIM. \pm		

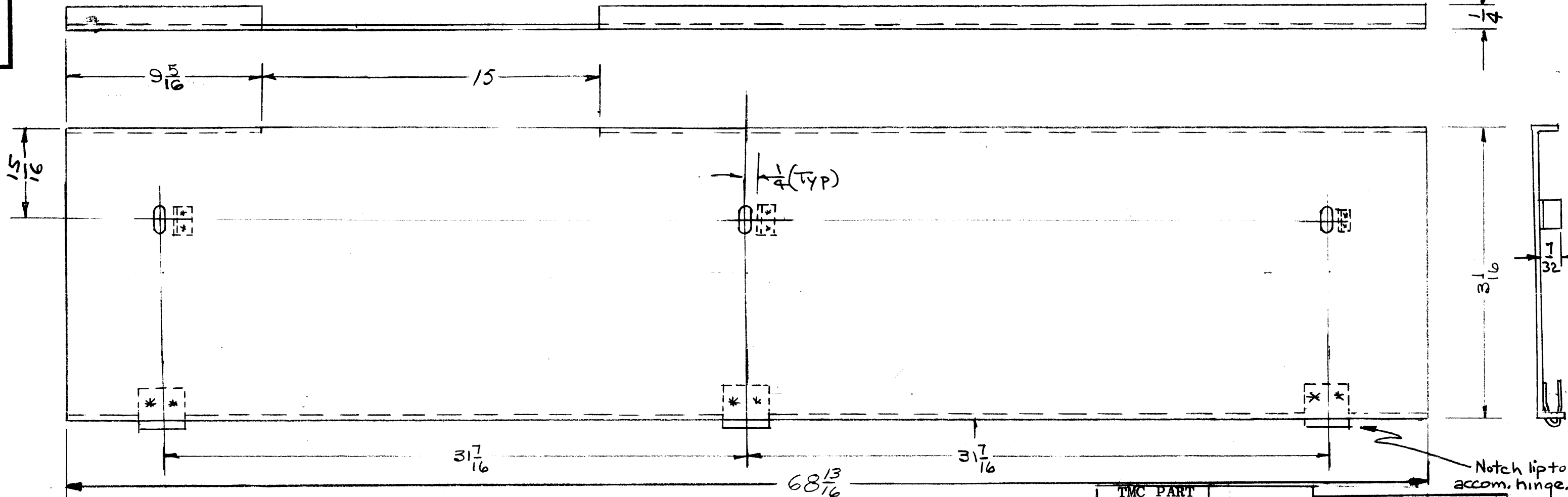
2	TMA-10K				
REQ. PER UNIT	MODEL	PROJECT NO.	ASS'Y. NO.	DATE	USED ON

REQ. ITEM	PART NO.	DESCRIPTION	SYMBOL
$\frac{1}{8}$ THICK		THE TECHNICAL MATERIEL CORP. MAMARONECK, NEW YORK	
STOCK SIZE			
ALUMINUM		PLATE, SIDE	
MATERIAL		ANT. METER BOX	
5052-H32			
TYPE & TEMPER	HEAT TREAT. SPEC.	DRAWN	CHECKED
SEE CHART		<i>EMN</i>	<i>MB</i>
FINISH & SPEC. NO.		ELEC. DES. APP.	MECH. DES. APP.
		<i>EMN</i>	<i>MB</i>
		MS-1668 D	

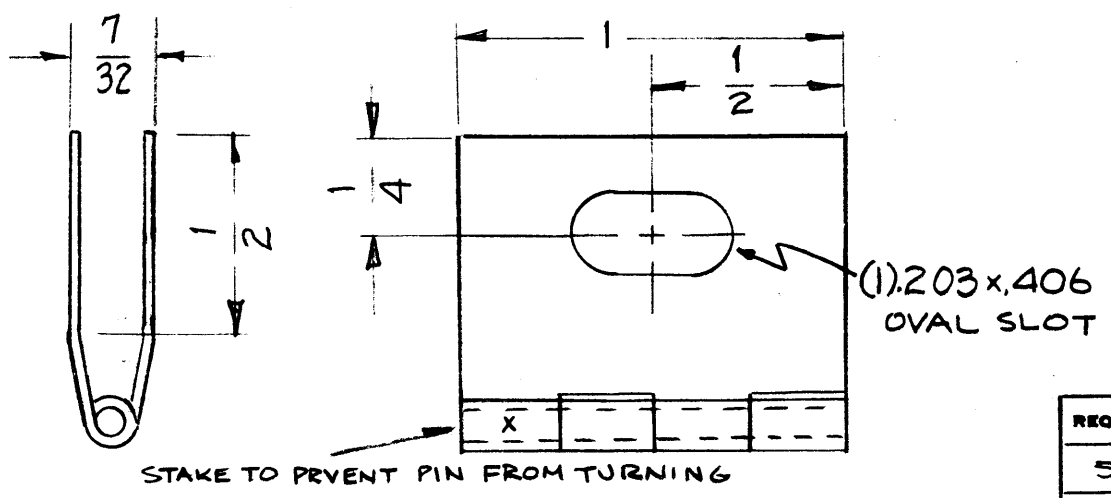
MS-1669 K



CLIP DETAIL
20 GA. STL.
3 REQ



ISSUE	ITEM	CHANGED FROM	DATE	CH. NO.	DRAFTS	CHECKER	ENG. APP.
K		FINISH S521 WAS S115	5-31-66	16237	HLL		
J	1	CHART ADDED	11-9-65	15239	H.V.V.		
H	1	DIM. 9 5/16 WAS 7 1/16	7-3-63	9448			
G	1	15" WAS 14 1/8	6-14-61	5056	% Lee		
F	4	13/64 D. hole deleted	6/11/60	2466			
F	3	Notch was 1/8 x 5/8					
F	2	CHIPS added					
F	1	HING added					
E	1	DELETE (1) "B" HOLE	4-27-60	2193	CY		
D	4	"B" HOLE WAS 3/8 D					
D	3	3/8 WAS 5/16					
D	2	1 1/2 WAS 1 3/16	3-18-60	1904			
D	1	7/16 WAS 7 9/16					
C	2	1 3/16 WAS 8 10/16	11/4/59	1518			
C	1	7 9/16 WAS 12 13/16					
B		ADDED 3 1/16 OMITTED 2 1/16	7/1/59				
A	4	THICKNESS WAS .064					
A	3	MAT'L. WAS ALUMINUM					
A	2	68-13/16 DIM WAS 68-5/16	6/9/59				
A	1	8-15/16 DIM WAS 8-7/8					



TMC PART NUMBER	MATL	FINISH
MS1669	20GA STEEL	S371, S114, S521
MS1669-2	20GA STEEL	S371, S114, S520
MS1669-3	.032 ALUM 5052-H32	S404, S114, S521

S114 ZINC CHROMATE PRIMER
S521 TEXTURED GRAY ENAMEL
S371 DEGREASE
S520 BLUE-GRAY TEXTURED VINYL
S404 IRIDITE, YELLOW

FINISH PER CHART

REQ. PER UNIT	MODEL	ASS'Y. NO.	DATE
1	GPT-40K		4-28-60
1	GPT-10KF()	AX-	
1	GPT-10KD()	AX-18B	
1	GPT-10KB()	AX-185	
1	GPT-10KA(), C(), E(), L()	AX-166	3-19-59

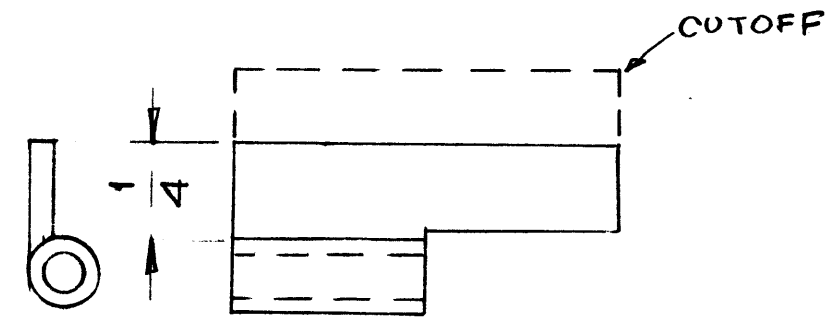
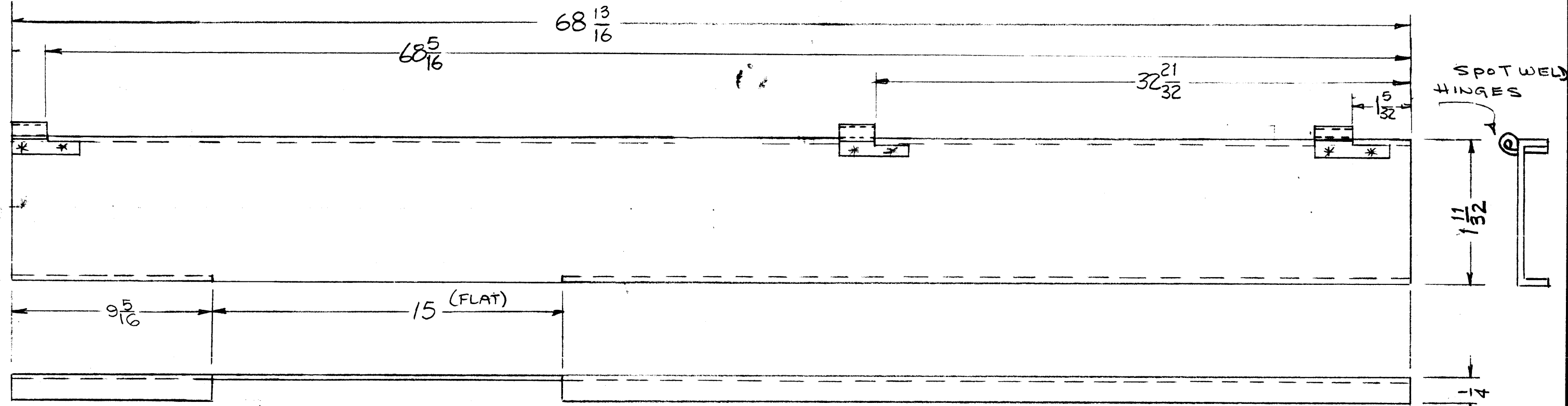
REQ. ITEM	PART NO.	DESCRIPTION	SYMBOL
SEE CHART		THE TECHNICAL MATERIEL CORP.	
SEE CHART		MAMARONECK, NEW YORK	
SEE CHART		TRIM, REAR, CENTER	
SEE CHART			
TYPE & TEMPER	HEAT TREAT. SPEC.	DRAWN	CHECKED
SEE CHART			
FINISH & SPEC. NO.	ELEC. DES. APP.	MECH. DES. APP.	MS-1669 K

MS-1670 J

B1

B2

Notch to accom. Hinge.)



STEEL HINGE 1/16 OPEN
 .045 THK. X .093 PIN DIA.
 STANLEY PT #65-33-80
 MODIFIED AS SHOWN

TMC PART NUMBER	MATL	FINISH
MS1670	20GA STEEL	S371, S114, S521
MS1670-2	20GA STEEL	S371, S114, S520
MS1670-3	.032 ALUM 5052-H32	S404, S114, S521

S114 ZINC CHROMATE PRIMER
 S521 TEXTURED GRAY ENAMEL
 S371 DEGREASE
 S520 BLUE-GRAY TEXTURED VINYL
 S404 IRIDITE, YELLOW

FINISH PER CHART

ISSUE	ITEM	CHANGED FROM	DATE	CH. NO.	DRAFTS	CHECKER	ENG. APP.
J		FINISH S521 WAS S115	5-31-66	16237	H.L.A.		
H	1	CHART ADDED	11-17-65	15239	J.V.		
G	1	DIM 9 5/16 WAS 7 1/16	7-5-63	9449			
F	1	DIM 15 FLAT WAS 14 1/4 FLAT	5/23/61	4936	D.P.M.		
E	3	32 21/32 WAS 31	9/13/60	2960			
	2	15 1/32 WAS 3 1/2					
	1	14 1/4 WAS 14 3/8					
D	3	Hinges added					
	2	3 13/64 HOLES DELETED	6/11/60	2466			
C	1	NOTCH WAS 14 1/8 X 5/8					
	2	14 1/8 WAS 14 3/16	3-18-60	1904			
B	1	7 1/16 WAS 7 9/16					
	1	14 3/8 WAS 8 5/16	11/4/59	1518			
A	4	MAT'L WAS ALUMINUM					
	3	THICKNESS WAS .064	6/9/59				
	2	68 13/16 DIM WAS 68 5/16					
	1	8 15/16 DIM WAS 8 7/8					

TOLERANCES: DEC. DIM. ± 1/64, FRAC. DIM. ± 1/64, AN ULAR DIM. ±

SCALE: *CP*

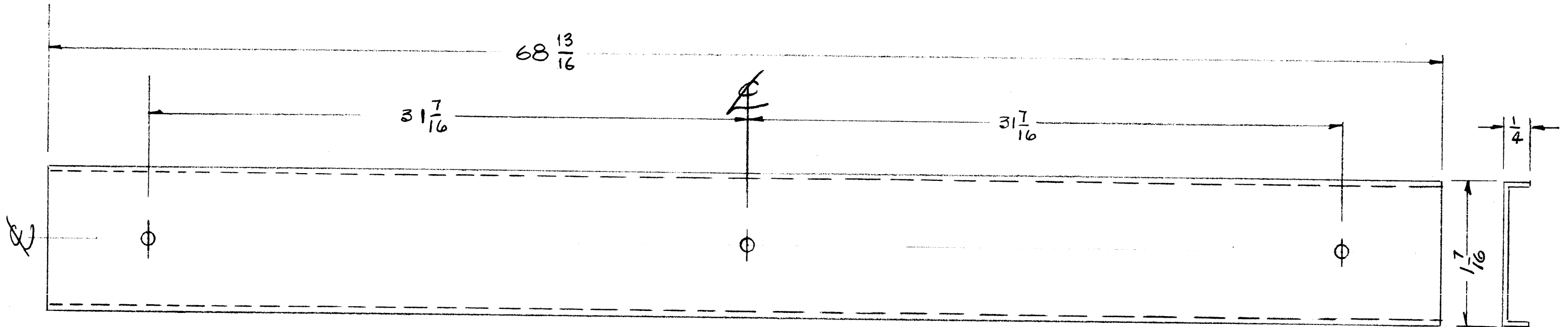
MAXIMUM ALLOWABLE TOLERANCES HAVE BEEN DETERMINED AND ANY DEVIATIONS WILL BE CAUSE FOR REJECTION. REMOVE ALL BURRS AND SHARP EDGES

REQ. PER UNIT	MODEL	DESCRIPTION	ASS'Y. NO.	DATE
1	GPT-10K-F()		AX-	
1	GPT-10K-D()		AX-182	
1	GPT-10KB()		AX-185	
1	GPT-10KA(), C(), E(), L()		AX-166	3-13-59

REQ. ITEM	PART NO.	DESCRIPTION	SYMBOL
SEE CHART		THE TECHNICAL MATERIEL CORP. MAMARONECK. NEW YORK	
SEE CHART		TRIM, REAR, RIGHT SIDE, AUX. FRAME	
SEE CHART			
SEE CHART			
TYPE & TEMPER	HEAT TREAT. SPEC.	DRAWN	CHECKED
SEE CHART		<i>DB</i>	<i>LD</i>
FINISH & SPEC. NO.	ELEC. DES. APP.	MECH. DES. APP.	FINAL APPROVAL
			MS-1670 J.

MS-1671 D

ALL HOLES $\frac{13}{64}$ (.203) DIA.



NOTICE TO PERSONS RECEIVING THIS DRAWING

THE TECHNICAL MATERIEL CORPORATION claims proprietary right in the material disclosed hereon. This drawing is issued in confidence for engineering information only and may not be reproduced or used to manufacture anything shown hereon without permission from THE TECHNICAL MATERIEL CORPORATION to the user. This drawing is loaned for mutual assistance and is subject to recall at any time.

Property of:
THE TECHNICAL MATERIEL CORPORATION
MAMARONECK, NEW YORK

TMC PART NUMBER	MATL	FINISH
MS1671	20GA STEEL	S371, S114, S521
MS1671-2	20GA STEEL	S371, S114, S520
MS1671-3	.032 ALUM 5052-H32	S404, S114, S521

S114 ZINC CHROMATE PRIMER
S521 TEXTURED GRAY ENAMEL
S371 DEGREASE
S520 BLUE-GRAY TEXTURED VINYL
S404 IRIDITE, YELLOW

FINISH PER CHART

ISSUE	ITEM	CHANGED FROM	DATE	CH. NO.	DRAFTS	CHECKER	ENG. APP.
D		FINISH S521 WAS S115	5-31-66	16237	HEA	JCB	[Signature]
C	1	CHART ADDED	11-19-65	15239	W.F.	JCB	[Signature]
B	1	GPT-40K ADDED	2-10-60	-	W.F.	JCB	[Signature]
A	2	MATERIAL WAS .064 ALUMINUM	6/19/59		JCB	JCB	[Signature]
	1	68-13/16 DIM WAS 68 5/8			JCB	JCB	[Signature]

REQ. PER UNIT	MODEL	ASS'Y. NO.	DATE
1	GPT-40K	AX-214	2-10-60
1	GPT-10K-F()	AX-	
1	GPT-10K-D()	AX-188	
1	GPT-10K-B()	AX-185	
1	GPT-10KA(),C(),E(),L()	AX-166	3-19-59

REQ. ITEM	PART NO.	DESCRIPTION	SYMBOL
SEE CHART	STOCK SIZE	THE TECHNICAL MATERIEL CORP. MAMARONECK, NEW YORK	
SEE CHART	MATERIAL	TRIM, REAR, LEFT SIDE, MAIN FRAME & PS FRAME	
SEE CHART	TYPE & TEMPER	HEAT TREAT. SPEC.	
SEE CHART	FINISH & SPEC. NO.	ELEC. DES. APP. MECH. DES. APP.	

MS-1672 E

NOTICE TO PERSONS RECEIVING THIS DRAWING

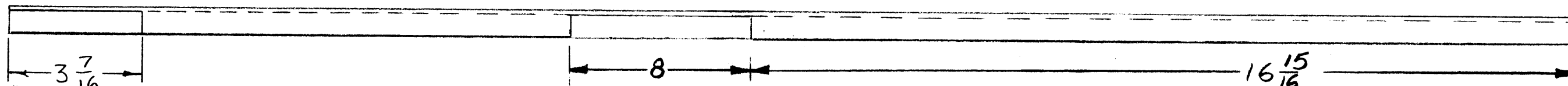
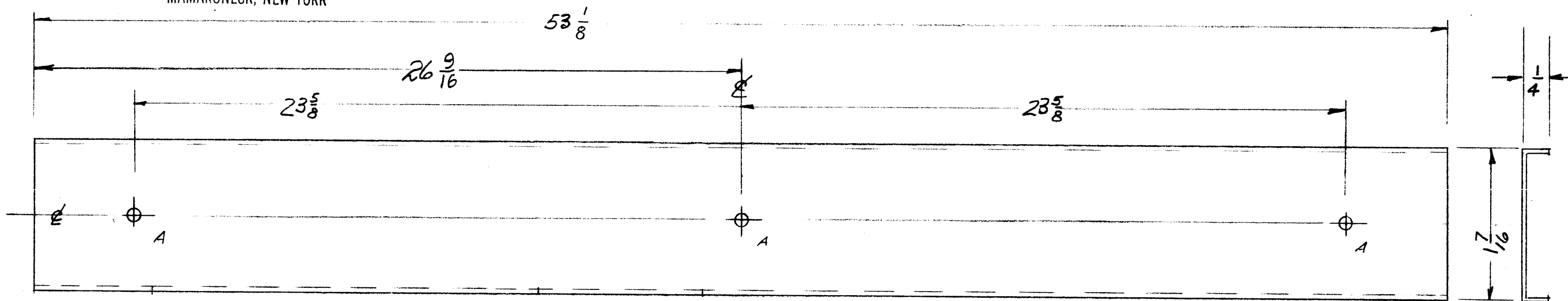
THE TECHNICAL MATERIEL CORPORATION claims proprietary right in the material disclosed hereon. This drawing is issued in confidence for engineering information only and may not be reproduced or used to manufacture anything shown hereon without permission from THE TECHNICAL MATERIEL CORPORATION to the user. This drawing is loaned for mutual assistance and is subject to recall at any time.

A - $\frac{13}{64}$ (.203) DIA.

3 REQ.

Property of:

THE TECHNICAL MATERIEL CORPORATION
MAMARONECK, NEW YORK



TMC PART NUMBER	MATL	FINISH
MS1672	20GA STEEL	S371, S114, S521
MS1672-2	20GA STEEL	S371, S114, S520
MS1672-3	.032 ALUM 5052-H32	S404, S114, S521

S114 ZINC CHROMATE PRIMER
S521 TEXTURED GRAY ENAMEL
S371 DEGREASE
S520 BLUE-GRAY TEXTURED VINYL
S404 IRIDITE, YELLOW

FINISH PER CHART

ISSUE	ITEM	CHANGED FROM	DATE	CH. NO.	DRAFTS	CHECKER	ENG. APP.
E		S521 WAS S115	5-31-66	16237	ALL	JCB	[Signature]
D	1	CHART ADDED	11-19-65	15239	24	JCB	[Signature]
C	1	53 1/8 WAS 53 1/4	5-20-60	2294	05	JCB	[Signature]
B	1	3 1/2" CUTOUT ADDED	3-24-60	1929	110	JCB	[Signature]
A	2	MATERIAL WAS 064 ALUMINUM	6/9/59			J.C.B.	[Signature]
	1	17-3/16 DIM WAS 17"					

TOLERANCES		SCALE: <i>1/4"</i>
DEC. DIM. ±	MAXIMUM ALLOWABLE TOLERANCES HAVE BEEN DETERMINED AND ANY DEVIATIONS WILL BE CAUSE FOR REJECTION.	
FRAC. DIM. ± <i>1/64</i>	REMOVE ALL BURRS AND SHARP EDGES	
ANGULAR DIM. ±		

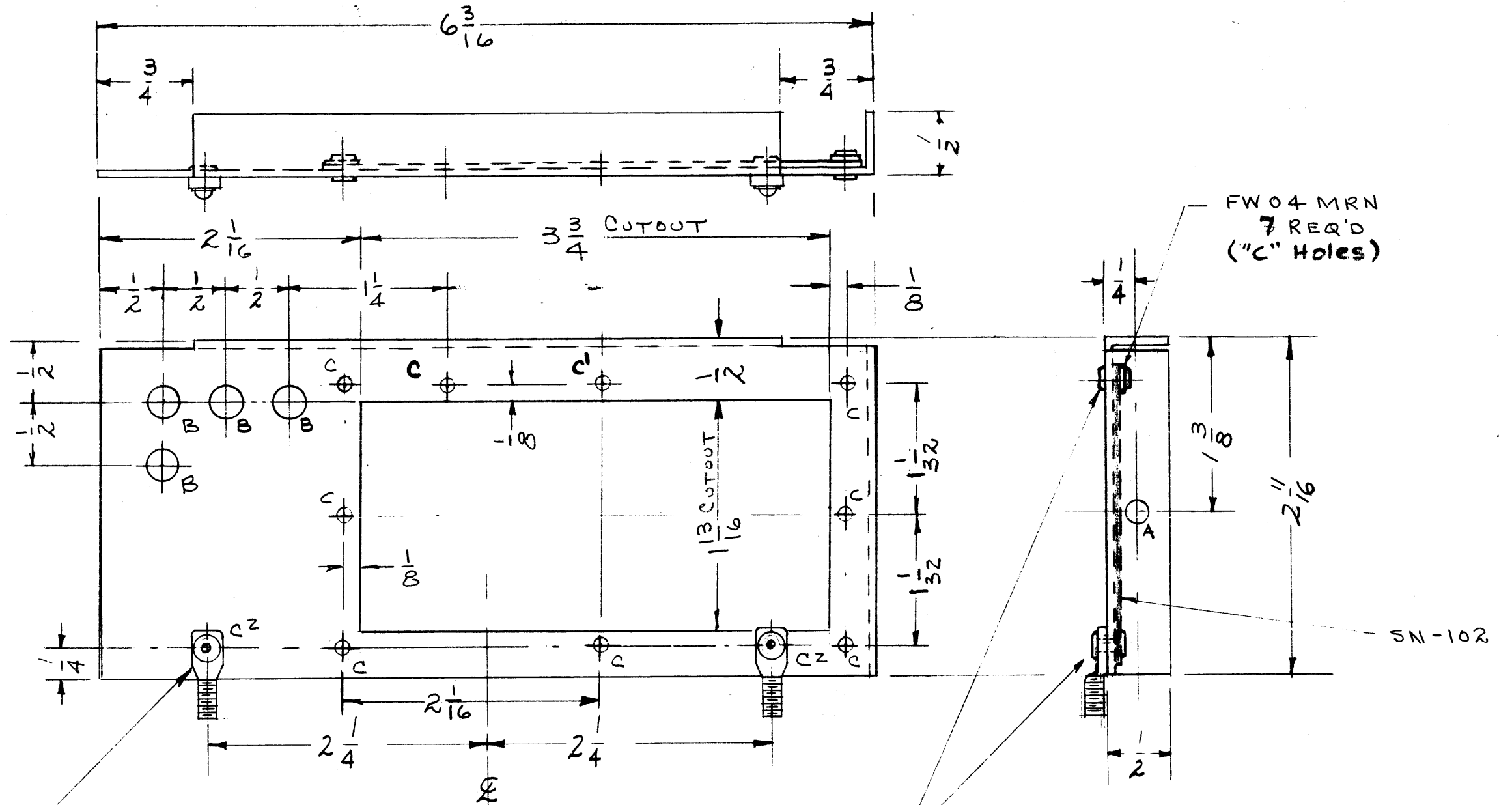
REQ. PER UNIT	MODEL	ASS'Y. NO.	DATE
2	GPT-10K-F()	AX-	
2	GPT-10K-D()	AX-188	
2	GPT-10K-B()	AX-185	
2	GPT-10K-A(),C(),E(),L()	AX-166	3-19-59

REQ. ITEM	PART NO.	DESCRIPTION	SYMBOL
SEE CHART		THE TECHNICAL MATERIEL CORP. MAMARONECK, NEW YORK	
SEE CHART		TRIM, REAR, TOP & BOTTOM	
SEE CHART			
SEE CHART			
TYPE & TEMPER	HEAT TREAT. SPEC.	DRAWN	CHECKED
SEE CHART		[Signature]	[Signature]
FINISH & SPEC. NO.	ELEC. DES. APP.	MECH. DES. APP.	
			MS-1672 E

MS-1694 B

A - 3/16 (.187) DIA. 1 REQ'D
 B - 1/4 (.25) " 4 "
 C - 1/8 (.125) " 11 "

C1 - Do Not Rivet
 C2 - SC-107-1



SC-107-1
 2 - REQ'D
 (C² HOLES)

NOTICE TO PERSONS RECEIVING THIS DRAWING

THE TECHNICAL MATERIEL CORPORATION claims proprietary right in the material disclosed hereon. This drawing is issued in confidence for engineering information only and may not be reproduced or used to manufacture anything shown hereon without permission from THE TECHNICAL MATERIEL CORPORATION to the user. This drawing is loaned for mutual assistance and is subject to recall at any time.

Property of:
 THE TECHNICAL MATERIEL CORPORATION
 MAMARONECK, NEW YORK

REQ. ITEM	PART NO.	DESCRIPTION	SYMBOL
1	4	SN-102	SCREEN, VENT
8	3	EY-100-2	EYELET
2	2	SC-107-1	BOLT, SPADE, OFFSET TYPE
7	1	FW04MRN	FLAT WASHER
.064		THE TECHNICAL MATERIEL CORP. MAMARONECK, NEW YORK	
ALUMINUM		TUBE CHASSIS SHIELD BRACKET	
5052-H32		IRIDITE	APR
TYPE & TEMPER		HEAT TREAT. SPEC.	DRAWN
S404 IRIDITE			CHECKED
FINISH & SPEC. NO.		ELEC. DES. APP. MECH. DES. APP.	
		MS-1694 B	

ISSUE	ITEM	CHANGED FROM	DATE	CH. NO.	DRAFTS	CHECKER	ENG. APP.
B	2	ONE 'C' HOLE WAS 'C ² ' HOLE IT WAS 9 REQ'D	11.10.64	12892		NRB	APR
A	1	'B' HOLES REARR'G'D ADDED CUT OUT 'C' HOLES SN-102	8/29/59	1203	usc	H	APR
TOLERANCES			SCALE:				
DEC. DIM. ±			MAXIMUM ALLOWABLE TOLERANCES HAVE BEEN DETERMINED AND ANY DEVIATIONS WILL BE CAUSE FOR REJECTION.				
FRAC. DIM. ±			REMOVE ALL BURRS AND SHARP EDGES				
ANGULAR DIM. ±							
REQ. PER UNIT		MODEL	PROJECT NO.	ASS'Y. NO.	DATE	USED ON	
1		RFC-1	PAL-1K		11-22-60		
		RFD-1	GPI-10K		6-23-59		
		RFB-1			3-26-59		