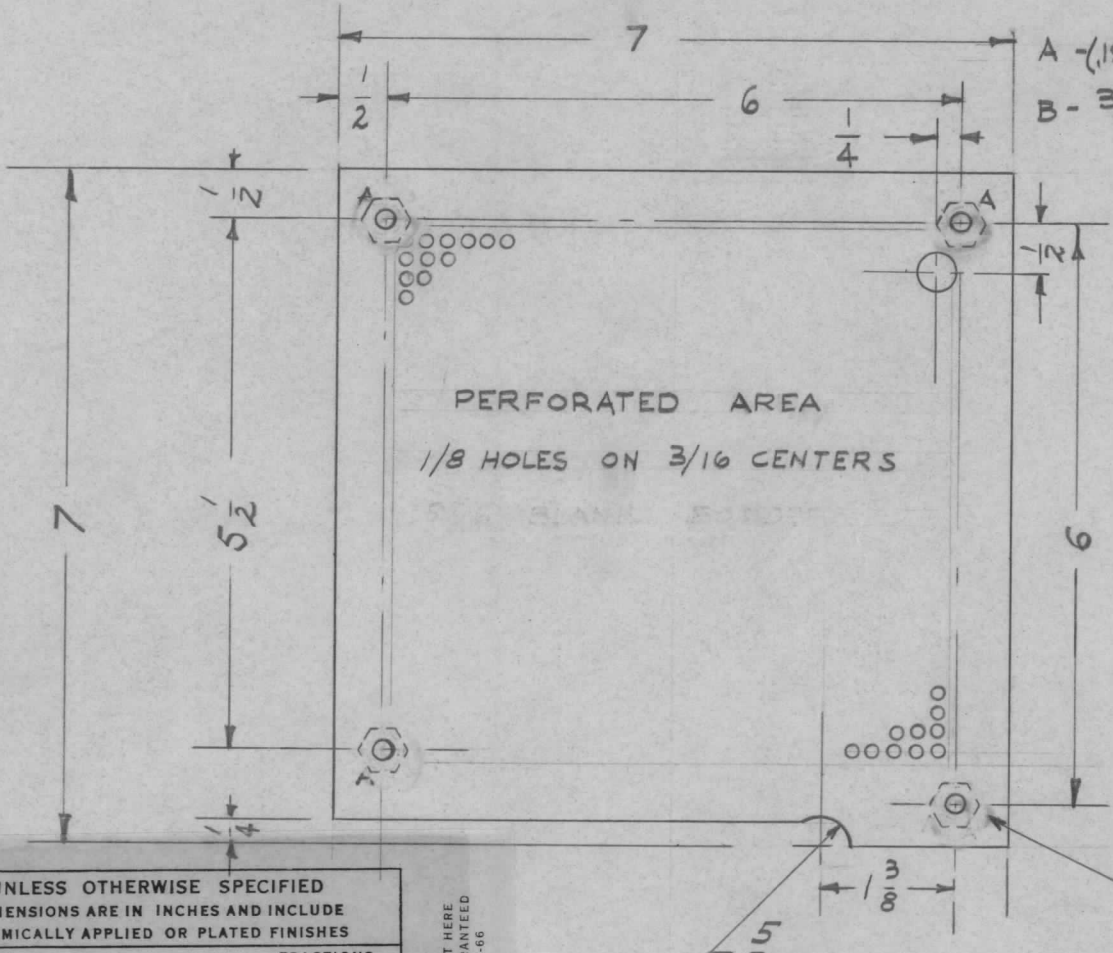


REQ. PER. UNIT	USED ON			MS-1692	B
	MODEL	ASS'Y. NO.	DATE		
1	RFB-1A				



A - (.194 - .191) 4 REQ'D.
 B - 3/8 (.375) D 1 "

REF-MS-1693

NT-129-632-4
 4 REQ'D.

UNLESS OTHERWISE SPECIFIED
 DIMENSIONS ARE IN INCHES AND INCLUDE
 CHEMICALLY APPLIED OR PLATED FINISHES

DECIMALS	TOLERANCES	FRACTIONS
.X ± .05		± 1/64
.XX ± .01		ANGLES
.XXX ± .005		± 0° 30'

CUT HERE
 GUARANTEED
 2-00

B	1	NT-129-632-4 WAS SM-107-13	11/14/60	—	W.F.	Jde	amb
A		ADDED 'B' HOLE	10/25/59	1400	PI	Jde	amb
ISSUE	ITEM	CHANGED FROM	DATE	CH. NO.	DRAFTS	CHECKER	ENG. APP.
TOLERANCES			SCALE:				
DEC. DIM. ±			MAXIMUM ALLOWABLE TOLERANCES HAVE BEEN DETERMINED AND ANY DEVIATIONS WILL BE CAUSE FOR REJECTION.				
FRAC. DIM. ±			REMOVE ALL BURRS AND SHARP EDGES				
ANGULAR DIM. ±							

4	1	NT-129-632-4	NUT, ROUND, SWAGE TYPE	
REQ.	ITEM	PART NO.	DESCRIPTION	SYMBOL
		.051	THE TECHNICAL MATERIEL CORP.	
		STOCK SIZE	MAMARONECK, NEW YORK	
		ALUMINUM	BLOWER INTAKE SCREEN	
		MATERIAL	GPT-10K	IPA
		5052-H32	JORILLO	amb
		TYPE & TEMPER	DRAWN	CHECKED
		HEAT TREAT. SPEC.	ATB	MSB
		FINISH & SPEC. NO.	ELEC. DES. APP.	MECH. DES. APP.
			MS-1692	B