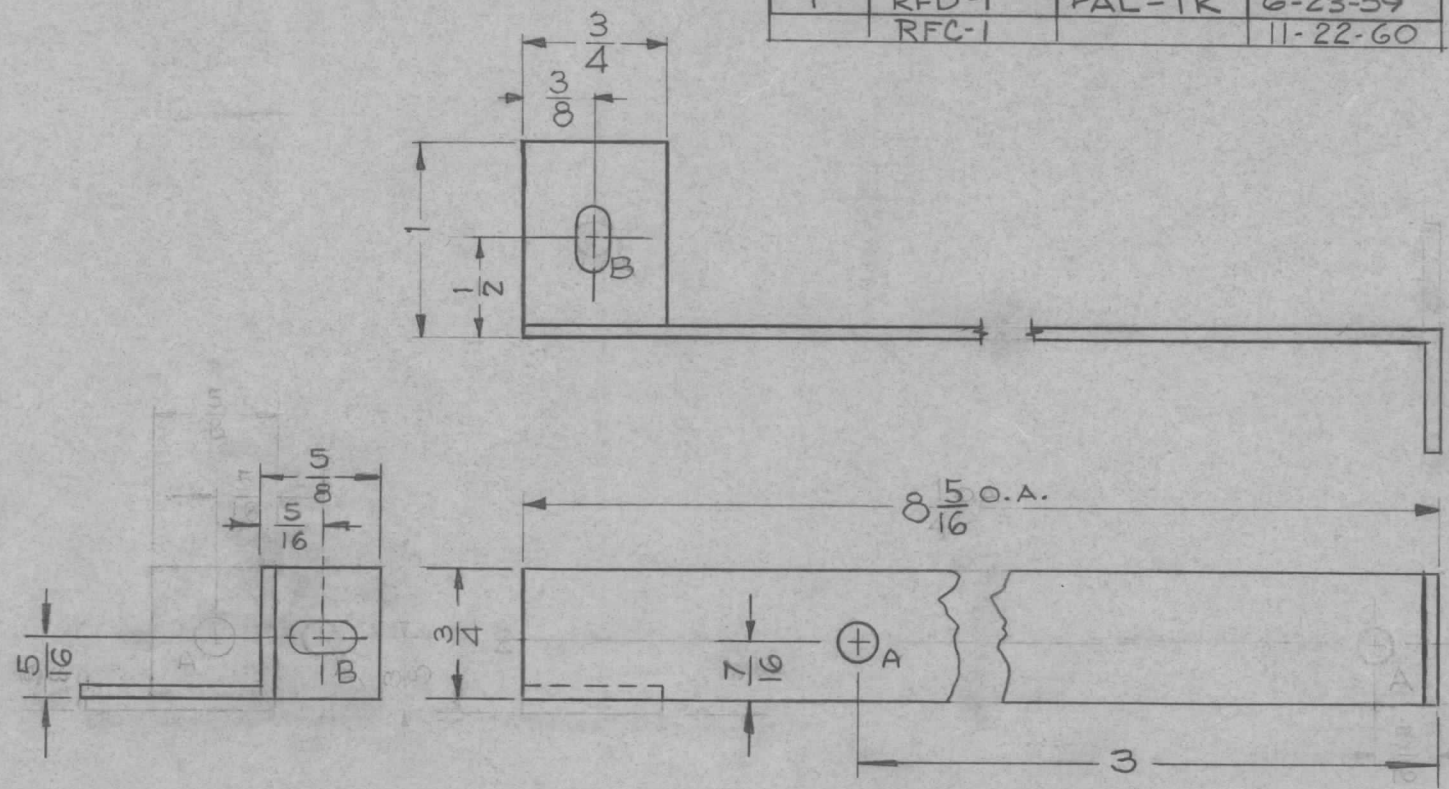


REQ. PER. UNIT	USED ON		
	MODEL	ASS'Y. NO.	DATE
1	RFB-1	GPT-10K	
1	RFD-1	PAL-1K	6-23-59
	RFC-1		11-22-60

MS-1690 E



Holes Req'd.
 A ~ 3/16 (.187) 1
 B ~ 11/64 x 11/32 SLOT 2

E	1	DELETED 1, A HOLE ADDED 1, B SLOT.	3-23-64	11072	A.M.	@	
D	1	8 5/16 O.A. WAS 8 1/4 O.A.	3-12-63	8524	RC	JWB	
C	3	1 B SLOT WAS AN A HOLE	12/20/60	3756	RU	JCB	
	2	RIGHT SIDE LIP REVERSED					
B	1	Dim 5/16 was 3/8, 7/16 was 3/8					
	3	REVERSE BEND ON SHIELD	5 17 60	2288	cy	JCB	AMB
	2	(1) A HOLE ADDED					
A	1	RELOCATE (1) A HOLE					
	2	3/8 LIP ADDED	12/7/59	1621	JAM	JCB	
	1	(1) A HOLE MOVED redrawn					

ISSUE	ITEM	CHANGED FROM	DATE	CH. NO.	DRAFTS	CHECKER	ENG. APP.
TOLERANCES		SCALE:					
DEC. DIM. ±		MAXIMUM ALLOWABLE TOLERANCES HAVE					
FRAC. DIM. ± 1/64		BEEN DETERMINED AND ANY DEVIATIONS					
ANGULAR DIM. ±		WILL BE CAUSE FOR REJECTION.					
		REMOVE ALL BURRS AND SHARP EDGES					

REQ.	ITEM	PART NO.	DESCRIPTION	SYMBOL
		.051	THE TECHNICAL MATERIEL CORP.	
		STOCK SIZE	MAMARONECK, NEW YORK	
		ALUMINUM	SHIELD, TERMINAL BOARD	
		MATERIAL		
		5052-H32	DF-man	16
		TYPE & TEMPER	DRAWN	CHECKED
		HEATTREAT. SPEC.		FINAL APPROVAL
		S-404 Yellow Iridite		
		FINISH & SPEC. NO.		
			ELEC. DES. APP	MECH. DES. APP
			MS-1690	E