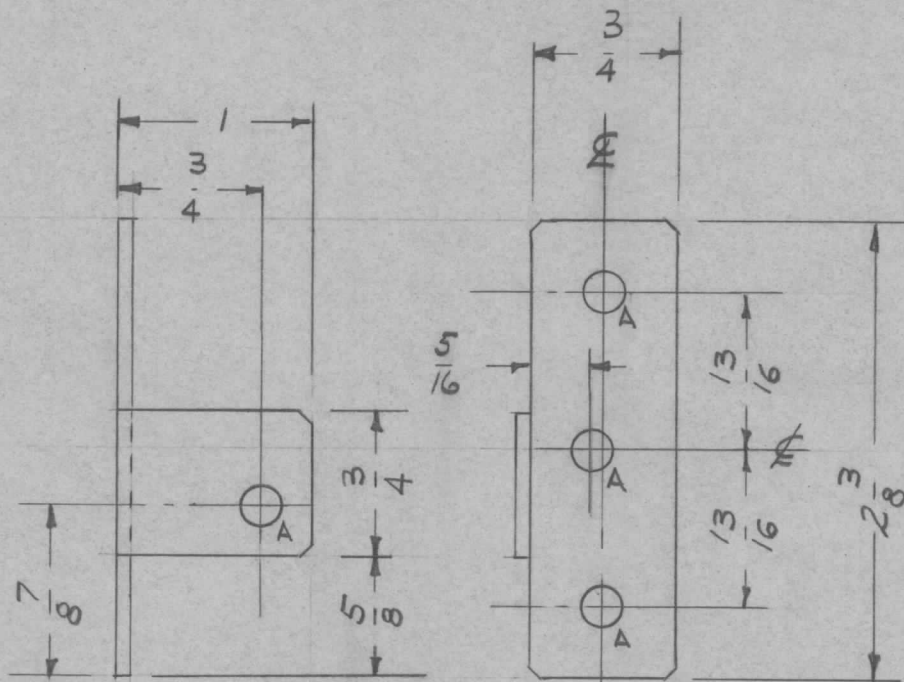


REQ. PER. UNIT	USED ON			MS-1685	A
	MODEL	ASS'Y. NO.	DATE		
1	RFB-1	GPT-10K			
1	RFD-1	PAL-1K	6-23-59		
	RFC-1		11-22-60		

A-13/64 (.203)

4-REQ'D.



Note:  
All corners nicked  
1/16 x 1/16.

UNLESS OTHERWISE SPECIFIED DIMENSIONS ARE IN INCHES AND INCLUDE CHEMICALLY APPLIED OR PLATED FINISHES	
DECIMALS .X ± .05 .XX ± .01 .XXX ± .005	FRACTIONS ± 1/64 ANGLES ± 0° 30'
<b>TOLERANCES</b>	

CUT HERE  
GUARANTEED  
2-66

ISSUE	ITEM	CHANGED FROM	DATE	CH. NO.	DRAFTS	CHECKER	ENG. APP.	REQ. ITEM	PART NO.	DESCRIPTION	SYMBOL	
									.064	THE TECHNICAL MATERIEL CORP.		
									STOCK SIZE	MAMARONECK, NEW YORK		
A	1	Nicked all corners	12-5-59	1627	DJM	16	[Signature]		ALUMINUM	CAPACITOR MOUNTING BRACKET		
TOLERANCES			SCALE:					5052-H32		TORILLO		[Signature]
DEC. DIM. ± FRAC. DIM. ± ANGULAR DIM. ±			MAXIMUM ALLOWABLE TOLERANCES HAVE BEEN DETERMINED AND ANY DEVIATIONS WILL BE CAUSE FOR REJECTION. REMOVE ALL BURRS AND SHARP EDGES					TYPE & TEMPER	HEAT TREAT. SPEC.	DRAWN	CHECKED	FINAL APPROVAL
								5404-IRIDITE		ATB	[Signature]	MS-1685
								FINISH & SPEC. NO.		ELEC. DES. APP.	MECH. DES. APP.	A