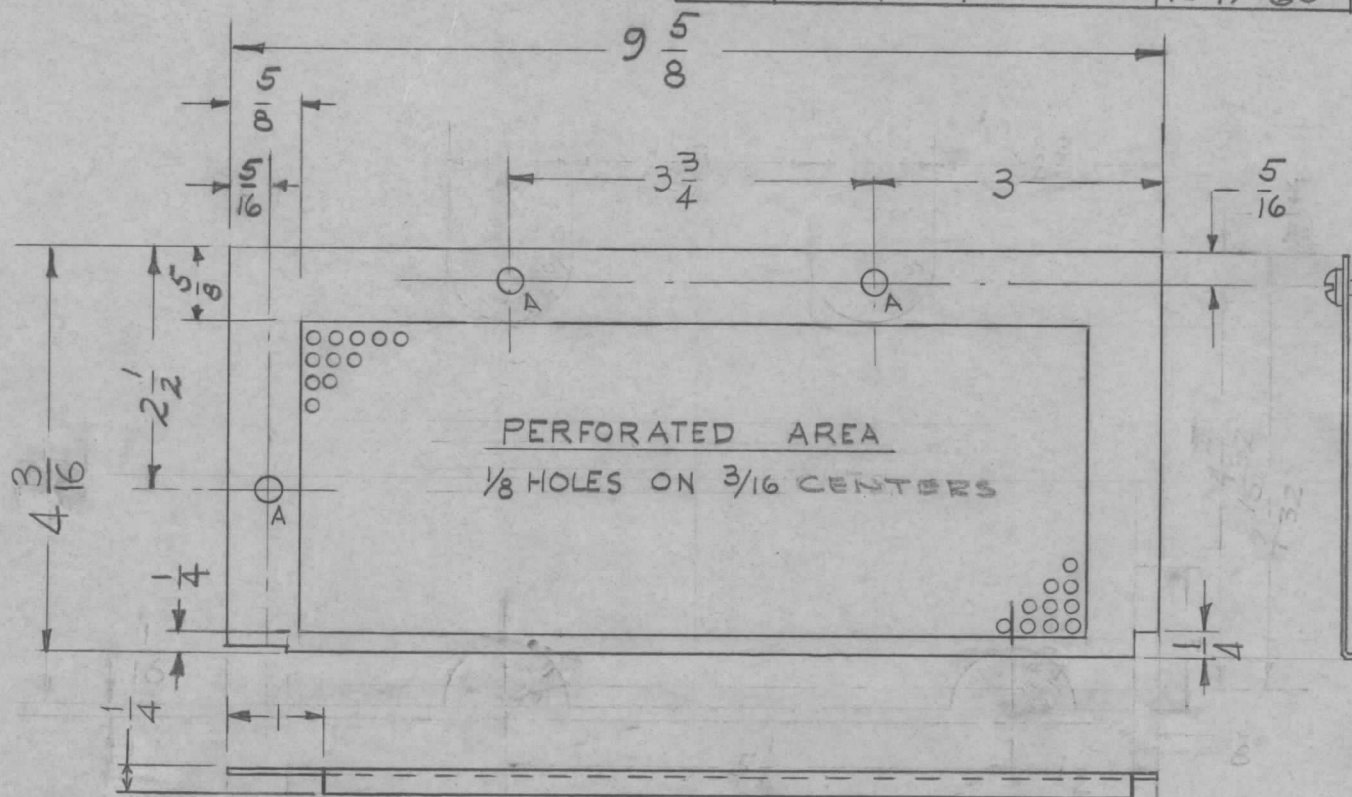


A-1/4(.25) 3 REQ'D

| REQ. PER. UNIT | USED ON |            |          |
|----------------|---------|------------|----------|
|                | MODEL   | ASS'Y. NO. | DATE     |
| 1              | RFB-1   | GPT-10K    |          |
| 1              | RFD-1   | PAL-1K     | 6-23-59  |
| 1              | RFC-1   |            | 12-19-60 |

MS-1682

H



MOUNT IN ALL 'A' HOLES AS SHOWN

| ISSUE | ITEM | CHANGED FROM                       | DATE     | CH. NO. | DRAFTS | CHECKER | ENG. APP. |
|-------|------|------------------------------------|----------|---------|--------|---------|-----------|
| H     | 1    | REF. DELE. 1/4 ADDED               | 11-30-65 | 15295   | H.V.   | JCS     |           |
| G     | 1    | Items (1)(2) Added                 | 1-2-62   | 6132    | J.H.   | JCS     |           |
| F     | 1    | 1" Notch was 5/8"                  | 5-3-61   | 4822    | J.C.B. | JCS     |           |
| E     | 3    | 5/8" Corner Notch Added            | 7-14-61  | 4120    | Rm     | JCS     | RK        |
|       | 2    | 1/4" LIP Added                     |          |         |        |         |           |
| D     | 1    | DIM. 4 3/16 was 4 1/16             |          |         |        |         |           |
|       | 2    | 5/8R Notches relocated             | 2-1-61   | 4059    | RU     | JCS     | RK        |
| C     | 1    | Dim 4 1/16 was 4 23/32 (left side) | 12-19-60 | 5761    | RU     | JCS     | RK        |
| B     | 2    | ADDED 1/4" CUT OUTS                | 4/7/59   |         |        |         |           |
| A     | 1    | ADDED 1/8 x 3/4 CUT OUT            | 4/2/59   |         |        |         |           |

| REQ. ITEM          | PART NO. | DESCRIPTION                  | SYMBOL         |
|--------------------|----------|------------------------------|----------------|
| 3 2                | FS-110-1 | STUD, SLOTTED                | A              |
| 3 1                | FS-109-3 | RING                         |                |
| .051               |          | THE TECHNICAL MATERIEL CORP. |                |
| STOCK SIZE         |          | MAMARONECK, NEW YORK         |                |
| ALUMINUM           |          | RF - CHASSIS COVER           |                |
| MATERIAL           |          | GPT-10K IPA                  |                |
| S052-H32           |          | 10RILLE                      | JALD           |
| TYPE & TEMPER      |          | HEAT TREAT. SPEC.            | DRAWN          |
| S404 IRIDITE       |          |                              | CHECKED        |
| FINISH & SPEC. NO. |          | ELEC. DES. APP               | MECH. DES. APP |
|                    |          |                              | ARB            |
|                    |          |                              | MS-1682        |
|                    |          |                              | H              |

**TOLERANCES**

DEC. DIM. ± 1/64  
 FRAC. DIM. ± 1/64  
 ANGULAR DIM. ±

**SCALE:**

MAXIMUM ALLOWABLE TOLERANCES HAVE BEEN DETERMINED AND ANY DEVIATIONS WILL BE CAUSE FOR REJECTION. REMOVE ALL BURRS AND SHARP EDGES