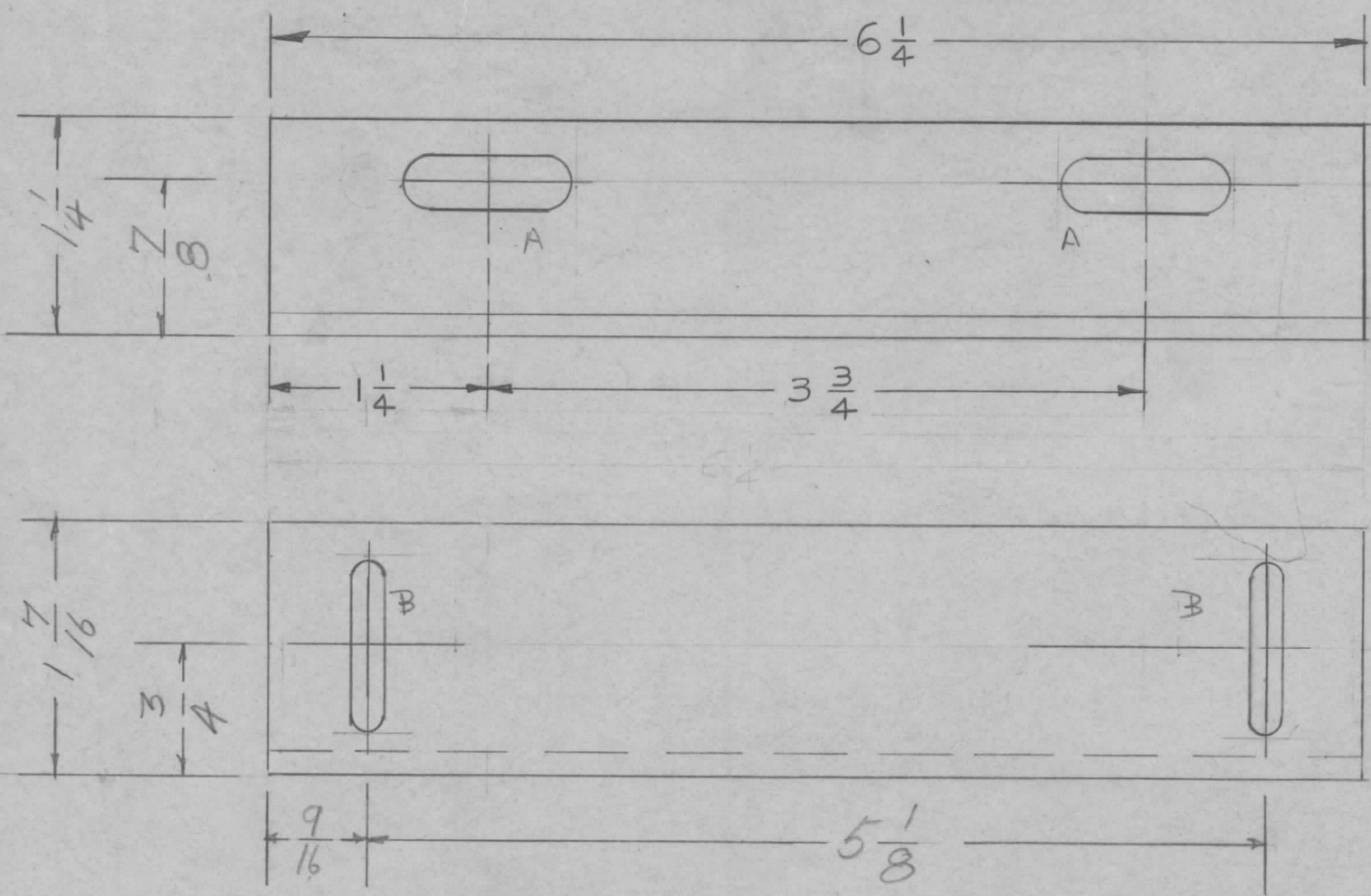


TMC PART NO.	PRIME OR DIP	FINISH
MS-1661-1	SI14 ZINC CHROM.	5520 BLUE GRAY TEXTURED ENAMEL
MS-1661-2	or Prime & Point Per Customers Specifications.	

REQ. PER. UNIT	USED ON		
	MODEL	ASS'Y. NO.	DATE
2	GPT-10K	AX-166	

MS-1661 F



A - 5/16 x 1 2 Req.
 B - 13/64 x 1 2 Req.

FINISH
 MS-1661-1
 5404 10/14
 511 4/12 10/14
 5227 5/16 10/14
 514 3/4 10/14
 514 3/4 10/14

ISSUE	ITEM	CHANGED FROM	DATE	CH. NO.	DRAFTS	CHECKER	ENG. APP.	REQ. ITEM	PART NO.	DESCRIPTION	SYMBOL				
C		STANDARD CD	5-13-60	2251						THE TECHNICAL MATERIEL CORP. MAMARONECK, NEW YORK <i>Bracket & Mounting</i> <i>Door Latch TOP, FRONT & REAR</i>	F				
F	1	5520 FINISH WAS 3220 FIN.	10/14/63	10189	QA	MT	WB		1/8						
E	1	"B" SLOT WAS 3/16 X 1	5-20-63	9060	E	gz	WB		ALUMINUM						
									5052-H32						
TOLERANCES			SCALE:												
DEC. DIM. ±			MAXIMUM ALLOWABLE TOLERANCES HAVE BEEN DETERMINED AND ANY DEVIATIONS WILL BE CAUSE FOR REJECTION. REMOVE ALL BURRS AND SHARP EDGES												
FRAC. DIM. ± 1/64															
ANGULAR DIM. ±															
								TYPE & TEMPER	HEAT TREAT. SPEC.	DRAWN	CHECKED	FINAL APPROVAL			
								See Chart							
								FINISH & SPEC. NO.	ELEC. DES. APP	MECH. DES. APP	MS-1661	F			