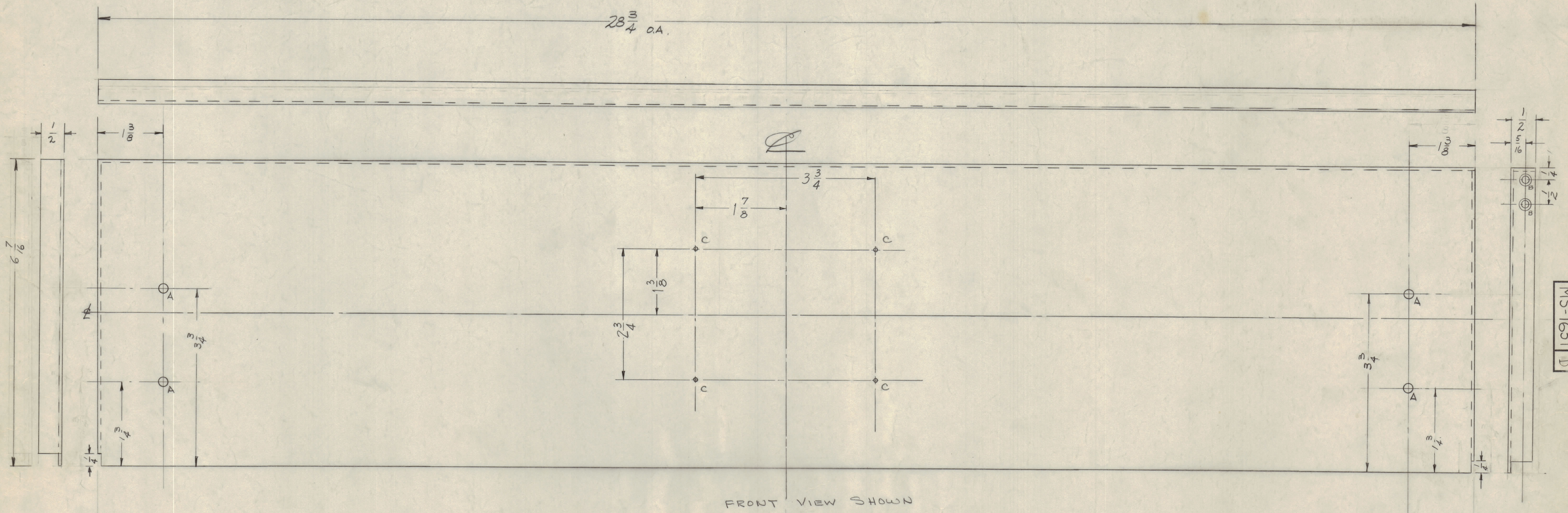


IF IT IS FOUND DESIRABLE TO CHANGE ANY TOLERANCE OR OTHER DETAIL SPECIFIED ON THIS DRAWING NOTIFY THE PURCHASER PROMPTLY.
 MAXIMUM ALLOWABLE TOLERANCES HAVE BEEN DETERMINED AND DEVIATIONS WILL BE CAUSE FOR REJECTION. REMOVE ALL BURRS AND SHARP EDGES

A - 5/64 (.078) DIA. 4 Req.

A - 3/16 DIA. HOLES 4 REQ'D.
 B - DRILL & C'SINK FOR G-32 2 "
 C - 5/64 (.078) DIA. 4 "



FRONT VIEW SHOWN

MS-1631 D

NOTICE TO PERSONS RECEIVING THIS DRAWING

THE TECHNICAL MATERIEL CORPORATION claims proprietary right in the material disclosed herein. This drawing is issued in confidence for engineering information only and may not be reproduced or used to manufacture anything shown hereon without permission from THE TECHNICAL MATERIEL CORPORATION to the user. This drawing is loaned for mutual assistance and is subject to recall at any time.

Property of:
 THE TECHNICAL MATERIEL CORPORATION
 MAMARONECK, NEW YORK

NOTES:

- S-404 YELLOW IRIDITE
 - S114 ZINC CHROMATE PRIMER
 - S115 TMC SMOOTH GREY ENAMEL OR PRIME & PAINT TO CUST. SPEC.
- FRONT & EDGES ONLY

REV	DESCRIPTION	DATE	CH. NO.	DRAFTS	CHECKER	ENG. APP.
D 1	GPT-40K ADDED	2-3-60		JCB		
C 1	S-404 YEL. IRIDITE WAS S-101 CAUSTIC DIP	11/1/59	1001	JCB		
B 1	C Holes were designated A	11-24-57	1591	JCB		
A 1	A Holes added	3/24/57		JCB		

REQ. PER UNIT	MODEL	PROJECT NO.	ASS'Y. NO.	DATE
1	AR-116	GPT-40K		2-3-60
	GPT-10K			2-16-59

REQ. ITEM	PART NO.	DESCRIPTION	SYMBOL
.064 THICK STOCK SIZE		THE TECHNICAL MATERIEL CORP. MAMARONECK, NEW YORK	
ALUMINUM		COVER, PLATE	
MATERIAL WEIGHT PER PC.		RELAY PANEL	
S052-H32			
TYPE & TEMPER			
DRAWN	ELEC. DES. APP.	MECH. DES. APP.	
CHECKED			
HEAT TREAT. SPEC.			
FINISH & SPEC. NO.			