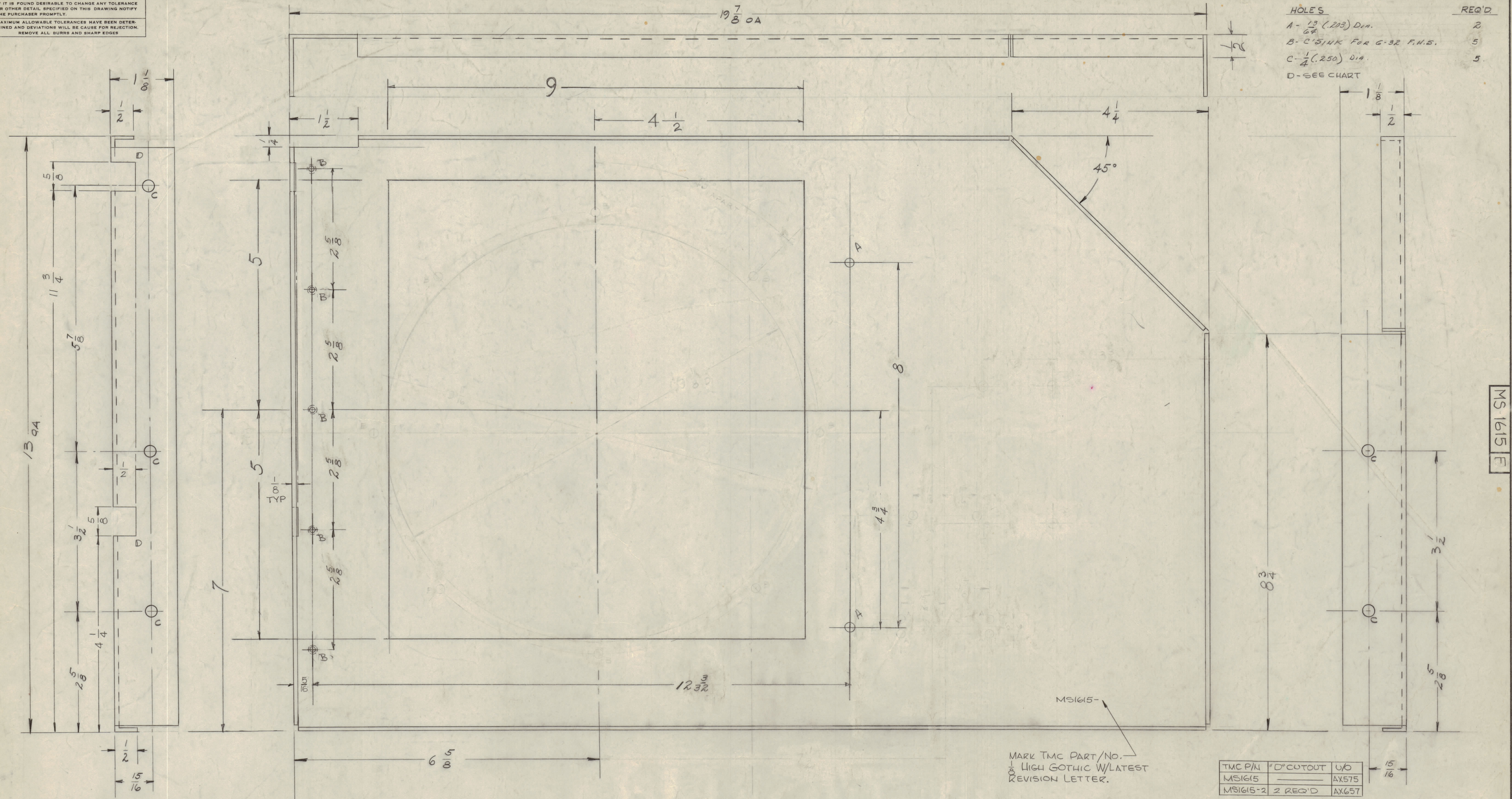


IF IT IS FOUND DESIRABLE TO CHANGE ANY TOLERANCE OR OTHER DETAIL SPECIFIED ON THIS DRAWING NOTIFY THE PURCHASER PROMPTLY.
 MAXIMUM ALLOWABLE TOLERANCES HAVE BEEN DETERMINED AND DEVIATIONS WILL BE CAUSE FOR REJECTION. REMOVE ALL BURRS AND SHARP EDGES



MS 1615 E

MARK TMC PART/NO. 1/8 HIGH GOTHIC W/LATEST REVISION LETTER.

TMC P/N	"D" CUTOUT	U/O
MS1615		AX575
MS1615-2	2 REQ'D	AX657

ISSUE	ITEM	CHANGED FROM	DATE	CN. NO.	DRAFTS	CHECKER	ENG. APP.
F		MARKING NOTE ADDED; P/N CHART ADDED	1-12-67	17659	WHD		
E	1	5/16 DIM. BET. C HOLES WAS 5 1/8"	10-29-67	6065	V.R.R.		
D	1	5/16 DIM. WAS 13/32"	5-24-68	6715	EP		
C	1	Dim 87A WAS 6 5/8"	11-30-61	1599	DM		
B		CLARIFIED DIMENSIONS.	9-4-59	1251	PD		
A		1/8 LIP WAS 1/4"	3/31/57				

SCALE: DRILL PUNCH COMMERCIAL STOCK SIZES AND MANUFACTURERS TOLERANCES ARE NOT INCLUDED.

REQ. ITEM	PART NO.	DESCRIPTION	SYMBOL
1	.081 THICK	THE TECHNICAL MATERIEL CORP.	
	STOCK SIZE	MAMARONECK, NEW YORK	
	ALUMINUM	MOUNTING PLATE, TOP FAN	
	MATERIAL	WEIGHT PER PC	
	TYPE & TEMPER	DRAWN	
		ELEC. DES. APP.	
		MECH. DES. APP.	
		CHECKED	
		HEAT TREAT. SPEC.	
		FINISH & SPEC. NO.	

HEAT TREAT. SPEC. 5-404 IRIDITE

FINAL APPROVAL MS 1615 E

REQ. PER UNIT	MODEL	PROJECT NO.	ASSY. NO.	DATE
1	GPT-19000	AUX FR		2-17-59