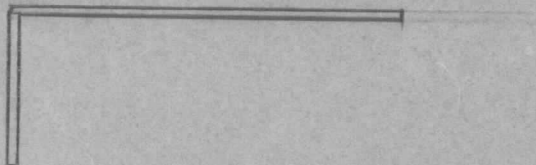
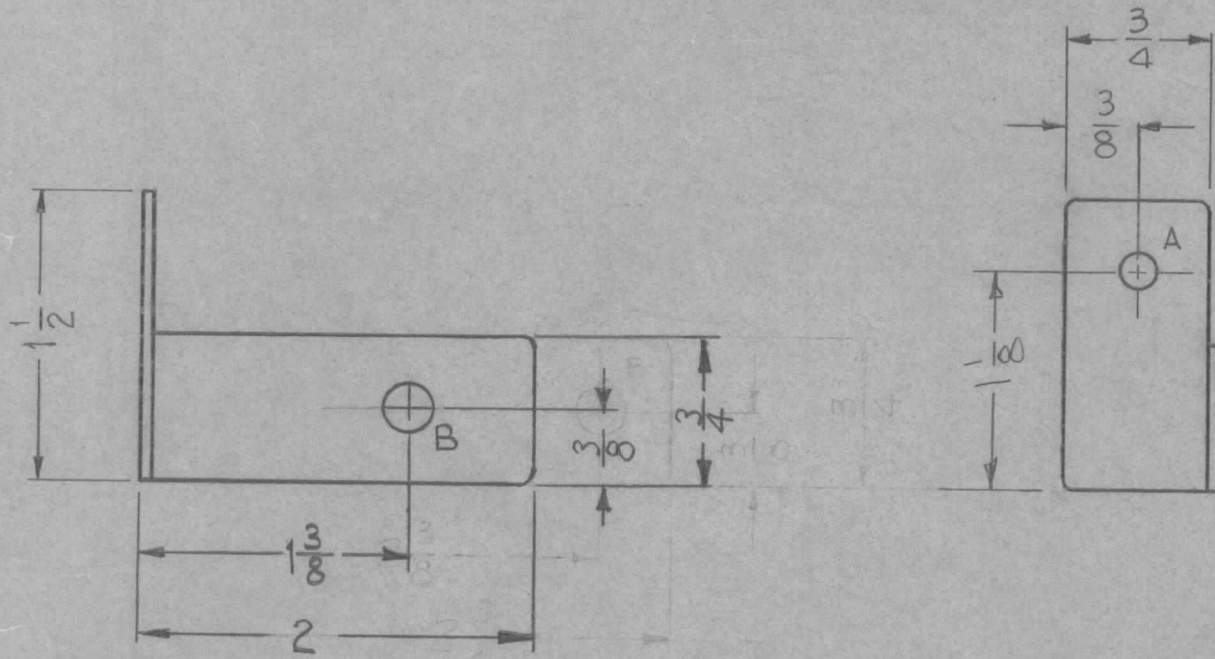


| | | | | | |
|---------------|---------|------------|---------|---------|---|
| REQ. PER UNIT | USED ON | | | MS-1600 | A |
| | MODEL | ASS'Y. NO. | DATE | | |
| 1 | GPT-10K | AX-137 | 2-20-59 | | |



A ~ # 11 Df (.191) DIA.
 B ~ 1/4 (.250) DIA.

1 Req.
 1 Req.



NOTE ~ BREAK ALL CORNERS
 1/8 RADIUS.

| | | | |
|---|------------|-----------|----------|
| UNLESS OTHERWISE SPECIFIED DIMENSIONS ARE IN INCHES AND INCLUDE CHEMICALLY APPLIED OR PLATED FINISHES | | | |
| DECIMALS | | FRACTIONS | |
| .X ± .05 | TOLERANCES | ± 1/64 | |
| .XX ± .01 | | ANGLES | ± 0° 30' |
| .XXX ± .005 | | | |

CUT HERE
 GUARANTEED
 2-66

Ref-ILD-558

| REQ. | ITEM | PART NO. | DESCRIPTION | | | | SYMBOL |
|--------------------|------|---------------------|--|-----------------|--------|-----------|-----------|
| | | .064 | THE TECHNICAL MATERIEL CORP. | | | | |
| | | STOCK SIZE | MAMARONECK, NEW YORK | | | | |
| A | 2 | 1 3/8 DIM WAS 2 3/8 | BRACKET, CHOKE SUPPORT | | | | |
| | 1 | 2" DIM. WAS 2 3/4 | | | | | |
| ISSUE | ITEM | CHANGED FROM | DATE | CH. NO. | DRAFTS | CHECKER | ENG. APP. |
| TOLERANCES | | | SCALE: | | | | |
| DEC. DIM. ± | | | MAXIMUM ALLOWABLE TOLERANCES HAVE BEEN DETERMINED AND ANY DEVIATIONS WILL BE CAUSE FOR REJECTION: REMOVE ALL BURRS AND SHARP EDGES | | | | |
| FRAC. DIM. ± 1/64 | | | | | | | |
| ANGULAR DIM. ± | | | | | | | |
| 5052-H32 | | J.C. BIELE | | J.C. BIELE | | APB | |
| TYPE & TEMPER | | HEATTREAT. SPEC. | | DRAWN | | CHECKED | |
| S-404 IRIDITE | | | | S.P. | | APB | |
| FINISH & SPEC. NO. | | ELEC. DES. APP. | | MECH. DES. APP. | | MS-1600 A | |