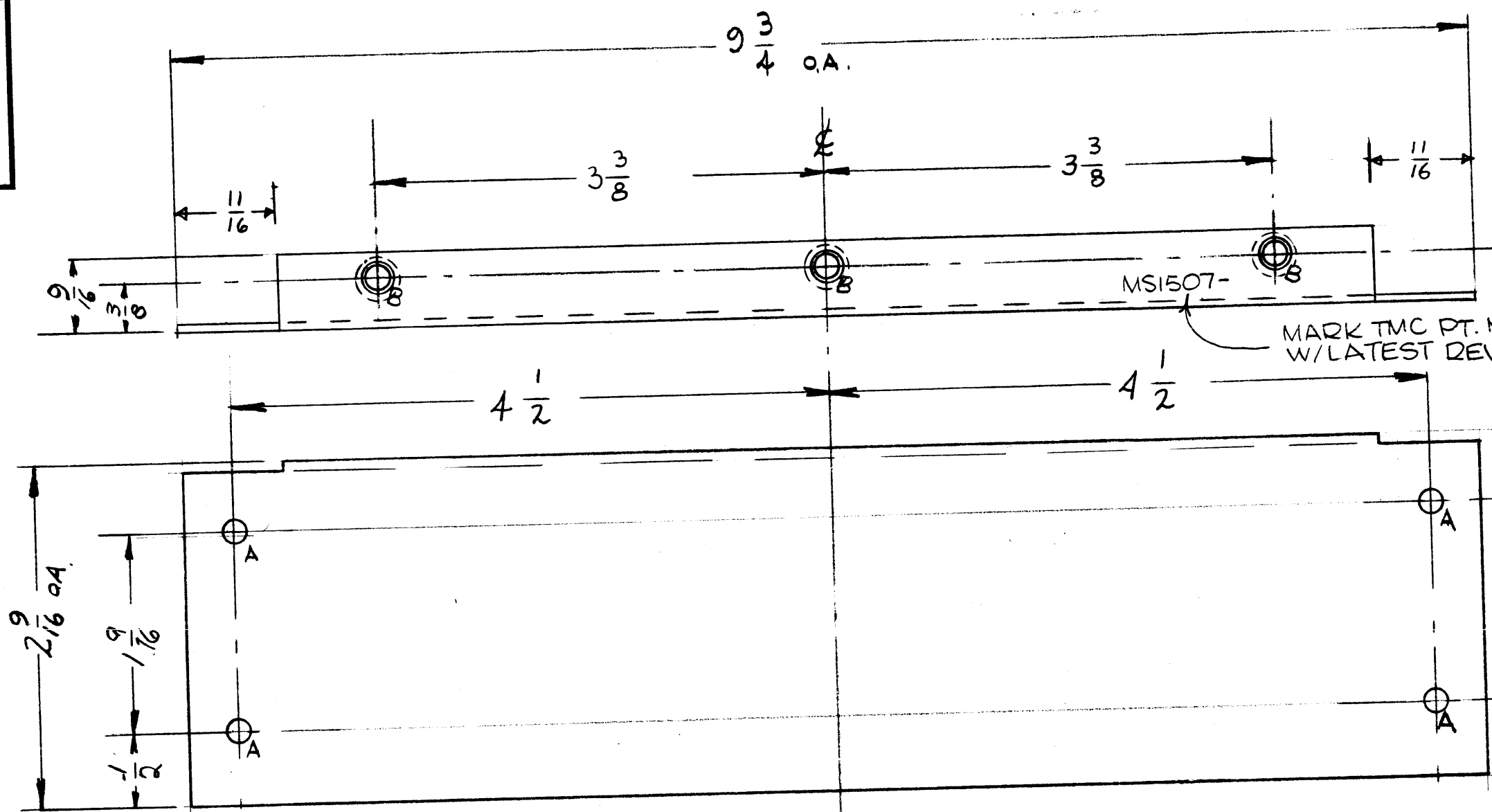
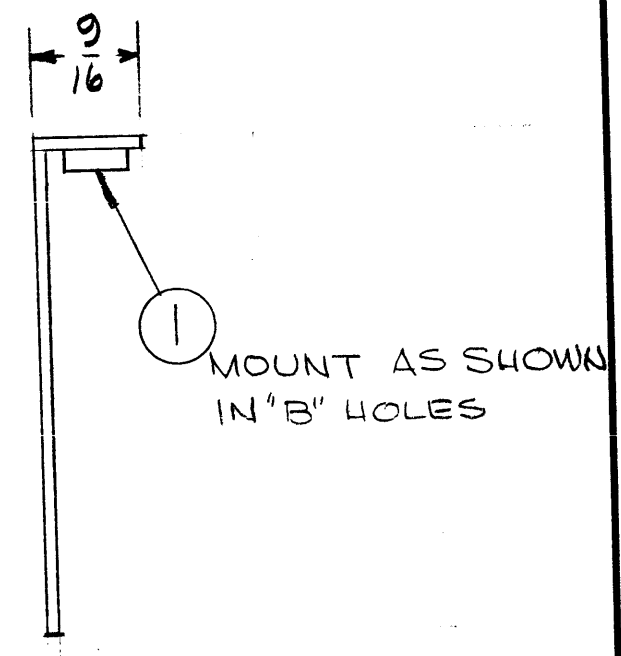


MS 1507 D



A $\frac{13}{64}$ (.203) DIA HOLE 4 REQ.
 B- $\frac{.221}{.224}$ D. 3 REQ.
 (FOR NT-129-832-4)



NOTICE TO PERSONS RECEIVING THIS DRAWING

THE TECHNICAL MATERIEL CORPORATION claims proprietary right in the material disclosed hereon. This drawing is issued in confidence for engineering information only and may not be reproduced or used to manufacture anything shown hereon without permission from THE TECHNICAL MATERIEL CORPORATION to the user. This drawing is loaned for mutual assistance and is subject to recall at any time.

Property of:
 THE TECHNICAL MATERIEL CORPORATION
 MAMARONECK, NEW YORK

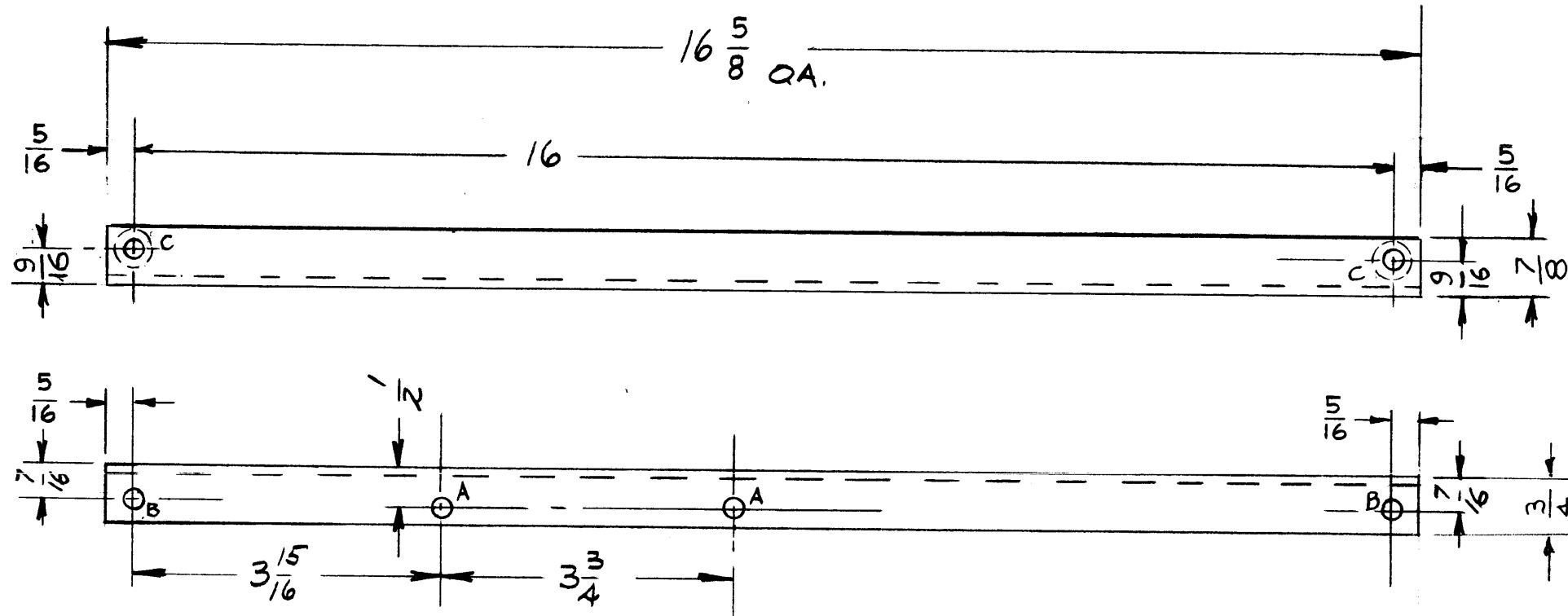
ISSUE	ITEM	CHANGED FROM	DATE	CH. NO.	DRAFTS	CHECKER	ENG. APP.
D		IT WAS CALLED OUT ON PICT ONLY, ADD TMC NO.	2.16.66	17492	WFW	[Signature]	[Signature]
C	1	"A" Holes Legend was $\frac{13}{64}$ (.171) (error)	7-14-61	5251	G.D.L.	[Signature]	[Signature]
B	1	"A" HOLE WAS $\frac{11}{64}$ D.	4-1-60	1986	M.B.	[Signature]	[Signature]
A	1	B Hole for NT-129 was C'snk for SMr 107	12-2-59	1612	P	[Signature]	[Signature]

TOLERANCES		SCALE:
DEC. DIM. \pm		MAXIMUM ALLOWABLE TOLERANCES HAVE BEEN DETERMINED AND ANY DEVIATIONS WILL BE CAUSE FOR REJECTION.
FRAC. DIM. \pm	$\frac{1}{64}$	REMOVE ALL BURRS AND SHARP EDGES
ANGULAR DIM. \pm		

1	GPT-10K	AX-137		2-6-59
REQ. PER UNIT	MODEL	PROJECT NO.	ASS'Y. NO.	DATE
				USED ON

3	1	NT129-832-4	NUT, CLINCH	B
REQ.	ITEM	PART NO.	DESCRIPTION	SYMBOL
		.081	THE TECHNICAL MATERIEL CORP. MAMARONECK, NEW YORK	
		ALUMINUM	REAR COVER, WRAPAROUND BAND SWITCH	
5052-H32		10RILLO	[Signature]	[Signature]
IRIDITE	RWB	QB	MS 1507 D	
FINISH & SPEC. NO.	ELEC. DES. APP.	MECH. DES. APP.		

MS-1511 C



- A - $\frac{13}{64}$ DIA. HOLES _____ 2 REQ'D.
- B - $\frac{17}{64}$ DIA. _____ 2 REQ'D.
- C - Dr. & C'SINK FOR 10-32 FHS _____ 2 REQ'D.

NOTICE TO PERSONS RECEIVING THIS DRAWING

THE TECHNICAL MATERIEL CORPORATION claims proprietary right in the material disclosed hereon. This drawing is issued in confidence for engineering information only and may not be reproduced or used to manufacture anything shown hereon without permission from THE TECHNICAL MATERIEL CORPORATION to the user. This drawing is loaned for mutual assistance and is subject to recall at any time.

Property of:

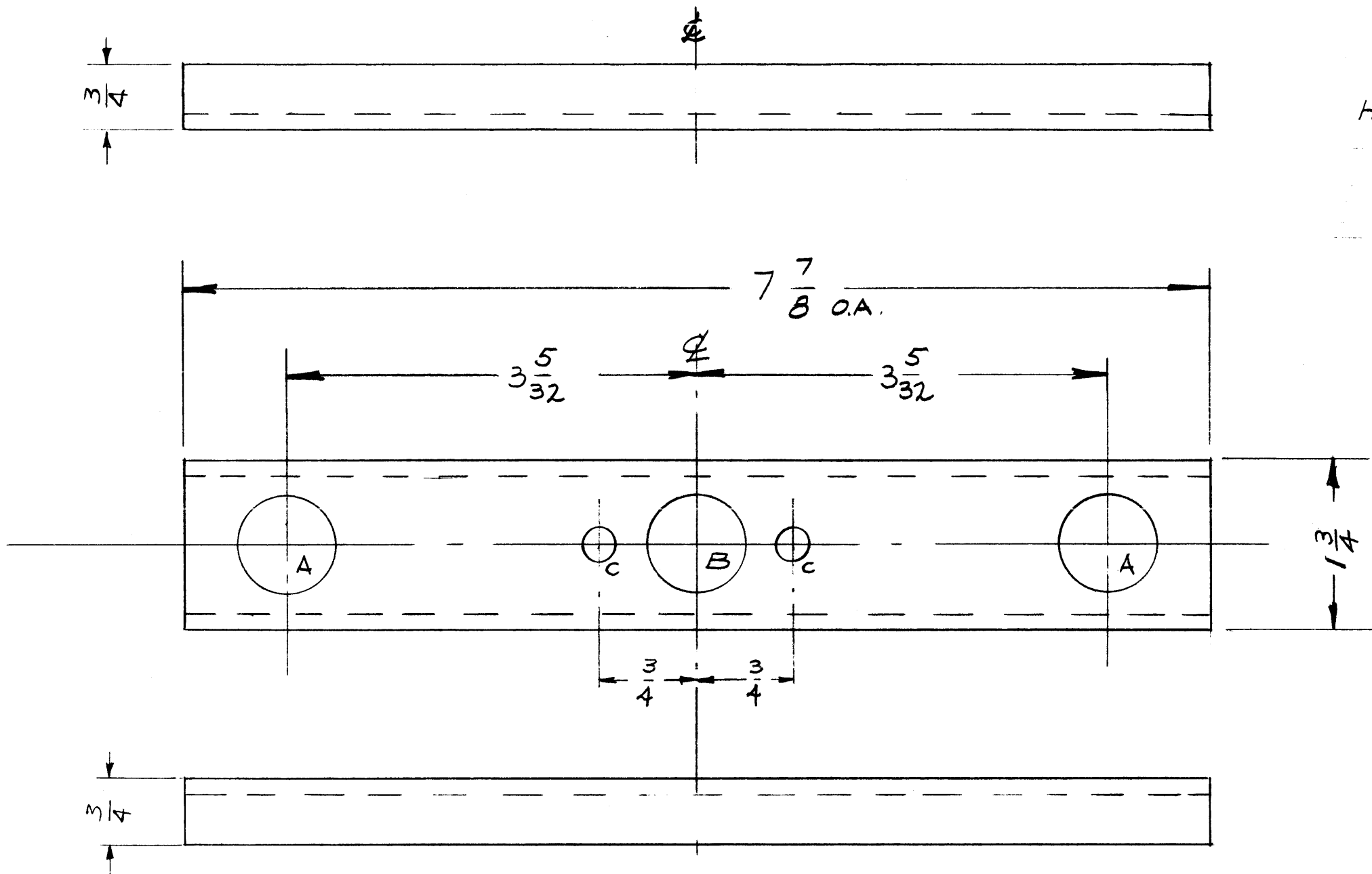
THE TECHNICAL MATERIEL CORPORATION
MAMARONECK, NEW YORK

C	2	5/16 DIMS. WERE 3/8	19/31/61	5782	L6	RD	RD
	1	16 5/8 DIM. WAS 16-3/4					
B	2	⊙ C Holes were B Holes	7-10-61	5234	G.D.L.	JCB	RD
	1	B Holes were 15/64 DIA.					
A	2	⊙ B Holes were A Holes	6-1-61	5000	RD	JCB	RD
	1	Dim 9/16 Was 7/16 - 7/8 Was 3/4					
ISSUE	ITEM	CHANGED FROM	DATE	CH. NO.	DRAFTS	CHECKER	ENG. APP.
TOLERANCES			SCALE:				
DEC. DIM. ±			MAXIMUM ALLOWABLE TOLERANCES HAVE BEEN DETERMINED AND ANY DEVIATIONS WILL BE CAUSE FOR REJECTION.				
FRAC. DIM. ± 1/64			REMOVE ALL BURRS AND SHARP EDGES				
ANGULAR DIM. ±							

1	GPT-10K	AT-100	1-30-59
REQ. PER UNIT	MODEL	PROJECT NO.	DATE
USED ON			

REQ. ITEM	PART NO.	DESCRIPTION	SYMBOL
		1/8 THICK STOCK SIZE	
		ALUMINUM	
		5052-H32	
		IRIDITE	
		THE TECHNICAL MATERIEL CORP. MAMARONECK, NEW YORK	
		SIDE SUPPORT	
		ANTENNA TUNER	
		12 BILLO	
		JCB	
		AMB	
		TYPE & TEMPER	
		HEAT TREAT. SPEC.	
		DRAWN	
		CHECKED	
		FINAL APPROVAL	
		MS-1511	C
		ELEC. DES. APP.	
		MECH. DES. APP.	

MS-1512 C



HOLES	REQ'D.
A - 5/8 DIA.	2
B - 3/4 DIA.	3
C - 1/4 DIA.	2

NOTICE TO PERSONS RECEIVING THIS DRAWING

THE TECHNICAL MATERIEL CORPORATION claims proprietary right in the material disclosed hereon. This drawing is issued in confidence for engineering information only and may not be reproduced or used to manufacture anything shown hereon without permission from THE TECHNICAL MATERIEL CORPORATION to the user. This drawing is loaned for mutual assistance and is subject to recall at any time.

Property of:
THE TECHNICAL MATERIEL CORPORATION
 MAMARONECK, NEW YORK

ISSUE	ITEM	CHANGED FROM	DATE	CH. NO.	DRAFTS	CHECKER	ENG. APP.
C	1	DIM. 1 3/4 WAS 1 1/2	2/10/64	10881	A.M.	T.R.	ARB
B	1	DIM 7/16 on top & bottom view deleted	7-13-61	5233	GDL	JCB	DB
A	1	"A" Holes were 3/4 DIA Two "C" Holes Added	2/24/59		W.H.L.	Jde	DB

TOLERANCES		SCALE: FULL
DEC. DIM. ±	MAXIMUM ALLOWABLE TOLERANCES HAVE BEEN DETERMINED AND ANY DEVIATIONS WILL BE CAUSE FOR REJECTION.	
FRAC. DIM. ±	REMOVE ALL BURRS AND SHARP EDGES	
ANGULAR DIM. ±		

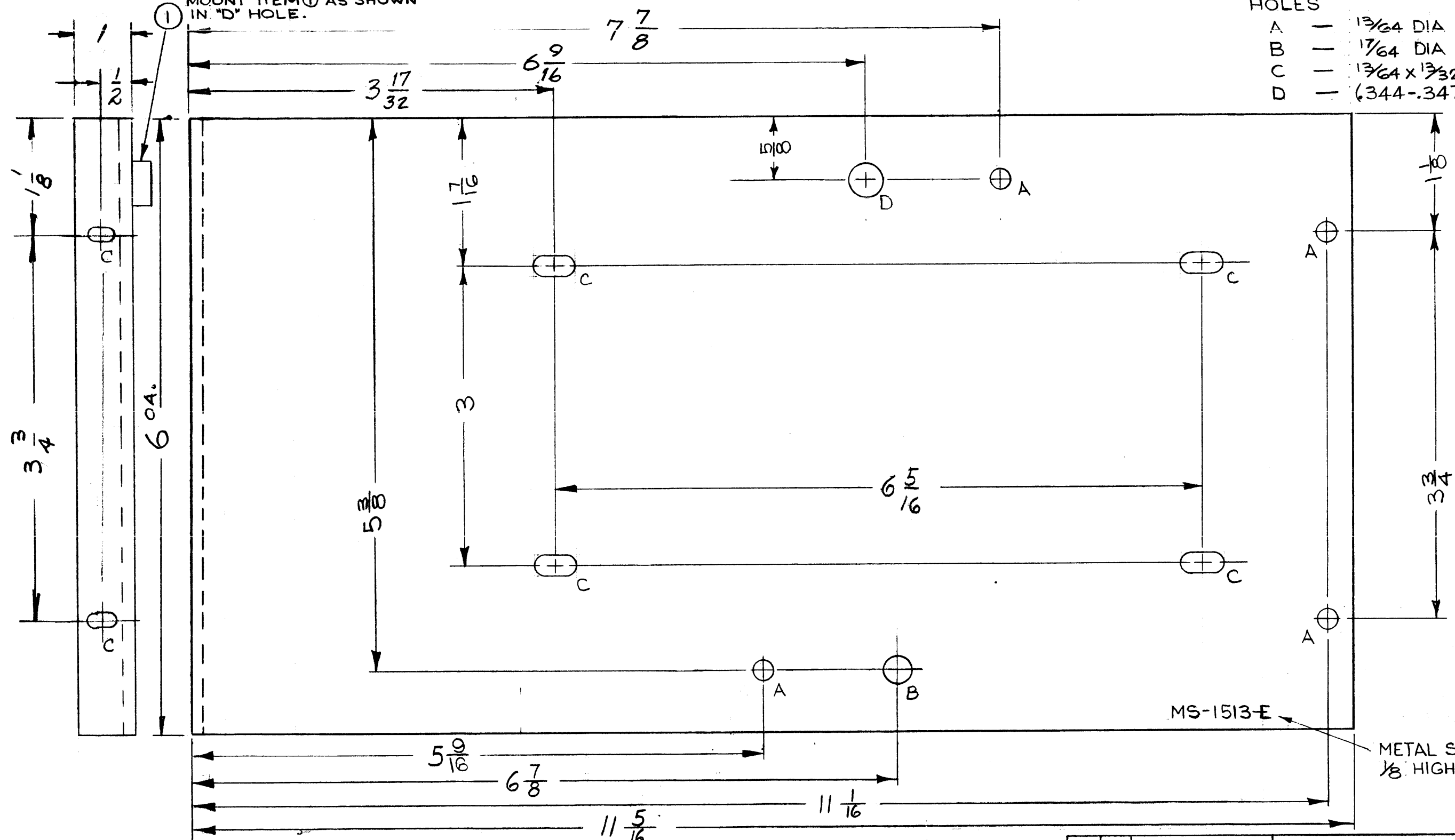
1	GPT-10K	AT-100		1-30-59
REQ. PER UNIT	MODEL	PROJECT N.	ASS'Y. NO.	DATE
USED ON				

REQ. ITEM	PART NO.	DESCRIPTION	SYMBOL
	1/8 THICK STOCK SIZE	THE TECHNICAL MATERIEL CORP. MAMARONECK, NEW YORK	
	ALUMINUM	CORE, GUIDE	
		ANTENNA, TUNER	
5052-H32		108111 Jde	ARB
IRIDITE		Jde	ARB
			MS-1512 C

MS-1513 E

MOUNT ITEM ① AS SHOWN IN "D" HOLE.

HOLES	REQ
A — 13/64 DIA	4
B — 17/64 DIA	1
C — 13/64 x 13/32 SLOT	6
D — (.344-.347) DIA	1



MS-1513-E

METAL STAMP TMC PART No. 1/8 HIGH GOTHIC

ISSUE	ITEM	CHANGED FROM	DATE	CH. NO.	DRAFTS	CHECKER	ENG. APP.
2	ITEM ① ADDED		5-1-63	8909			
1	1" D. HOLE ADDED, WAS "B" HOLE						
D	1	5 9/16 DIM WAS 5 7/8	4-11-63	8725			

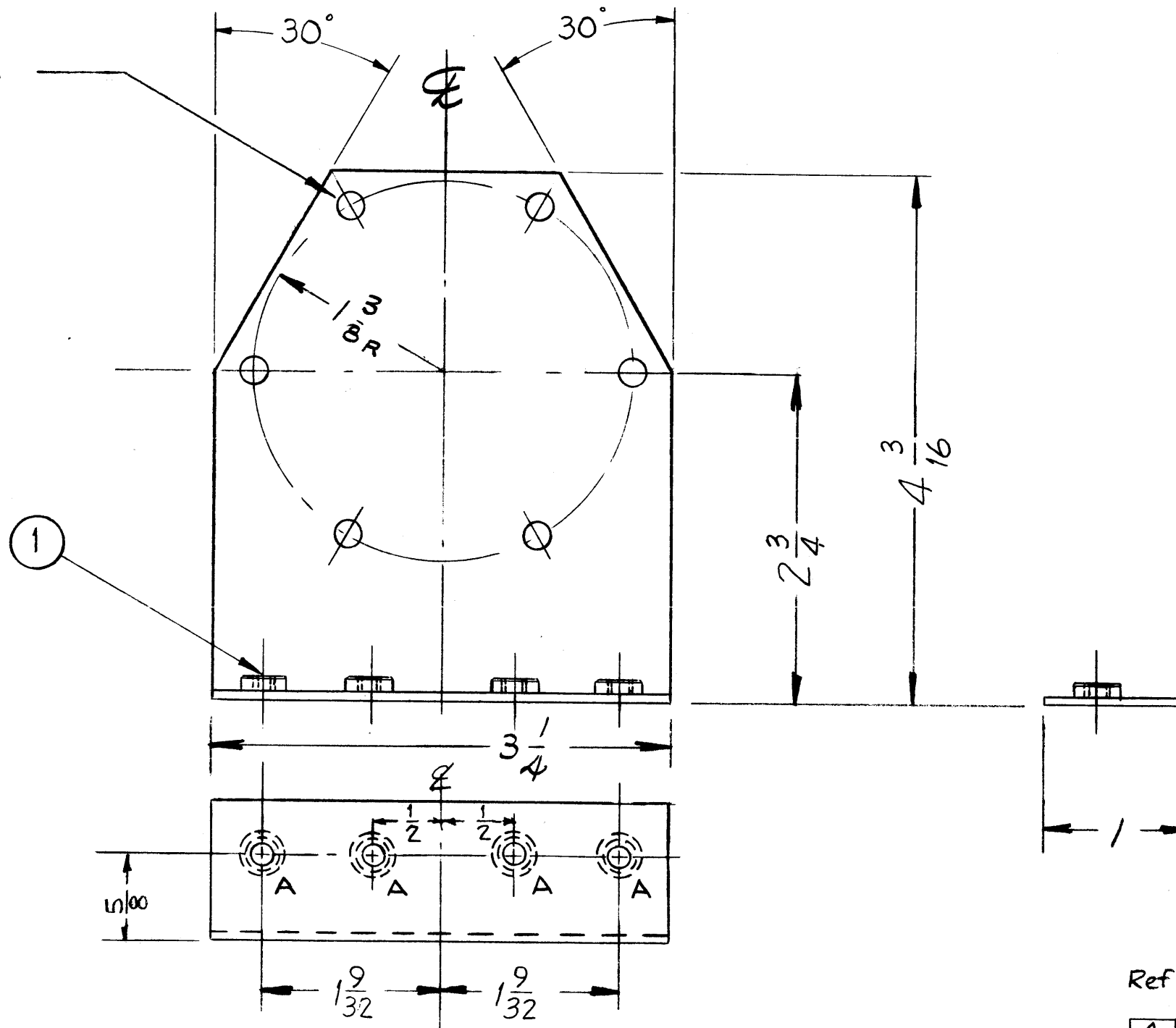
TOLERANCES: DEC. DIM. ± 1/64, FRAC. DIM. ± 1/64, ANGULAR DIM. ±

SCALE: MAXIMUM ALLOWABLE TOLERANCES HAVE BEEN DETERMINED AND ANY DEVIATIONS WILL BE CAUSE FOR REJECTION. REMOVE ALL BURRS AND SHARP EDGES

1	GPT-10K	AT-100	1-30-59
REQ. PER UNIT	MODEL	PROJECT NO.	ASS'Y. NO.
USED ON			

1	1	NT-129-420-G	NUT, SWAGE	
REQ. ITEM	PART NO.		DESCRIPTION	SYMBOL
1/8 THICK STOCK SIZE			THE TECHNICAL MATERIEL CORP. MAMARONECK. NEW YORK	
ALUMINUM MATERIAL			COIL SUPPORT PLATE	
5052-H32			ANTENNA, TUNER	
TYPE & TEMPER		HEAT TREAT. SPEC.	DRAWN	CHECKED
IRIDITE				
FINISH & SPEC. NO.		ELEC. DES. APP.	MECH. DES. APP.	MS-1513 E

6 HOLES $\frac{3}{16}$ DIA
60° APART



NOTE -
FINISH - SILVER PLATE .0005
& CLEAR IRIDITE.

NOTICE TO PERSONS RECEIVING THIS DRAWING
THE TECHNICAL MATERIEL CORPORATION claims proprietary right in the material disclosed hereon. This drawing is issued in confidence for engineering information only and may not be reproduced or used to manufacture anything shown hereon without permission from THE TECHNICAL MATERIEL CORPORATION to the user. This drawing is loaned for mutual assistance and is subject to recall at any time.

Property of:
THE TECHNICAL MATERIEL CORPORATION
MAMARONECK, NEW YORK

Ref-ILD-574

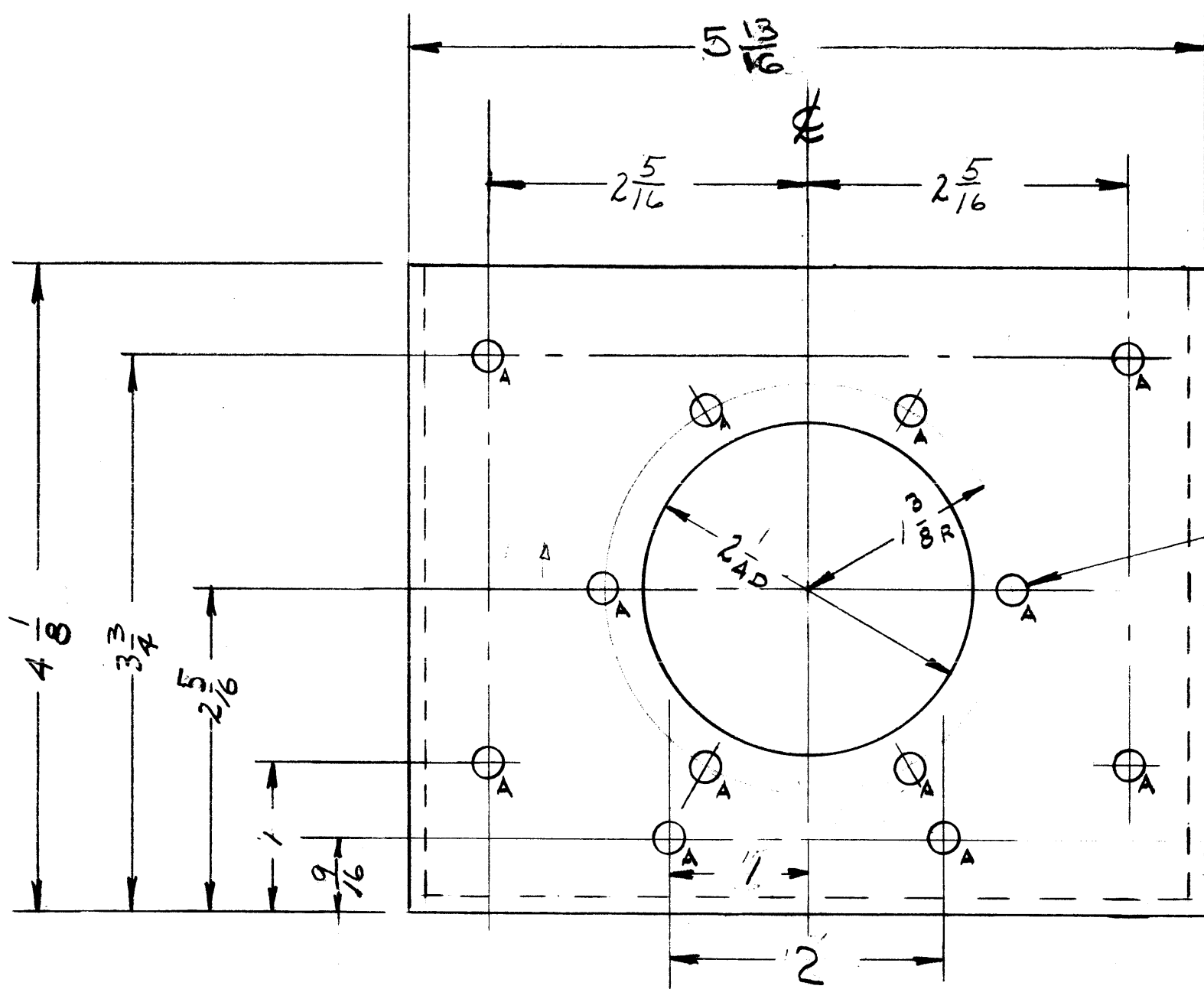
ISSUE	ITEM	CHANGED FROM	DATE	CH. NO.	DRAFTS	CHECKER	ENG. APP.
B	4	Notches added	3/24/59		J.C.B.	HAG	AK
	3	1-5/8 deleted					
	2	NT-129-832-4 added					
	1	SM-104-37 deleted					
A	1	4 3/8 was 4, 2 3/4 was 2 3/8 Two SM-107-34 ADDED	2/12/59	798	HAG	RB	AMB

TOLERANCES		SCALE:
DEC. DIM. ±		MAXIMUM ALLOWABLE TOLERANCES HAVE BEEN DETERMINED AND ANY DEVIATIONS WILL BE CAUSE FOR REJECTION. REMOVE ALL BURRS AND SHARP EDGES
FRAC. DIM. ±	1/64	
ANGULAR DIM. ±		

REQ. PER UNIT	MODEL	PROJECT NO.	ASS'Y. NO.	DATE
1	GPT-19K	AX-137		1-29-59

REQ. ITEM	PART NO.	DESCRIPTION	SYMBOL
4	1 NT-129-832-4	NUT, SWAGE TYPE	
.064 THICK		THE TECHNICAL MATERIEL CORP.	
STOCK SIZE		MAMARONECK, NEW YORK	
ALUMINUM		CONDENSER, SUPPORT	
MATERIAL		GPT 10000 (TI-102)	
5052-H32		TORILLO	ARB
TYPE & TEMPER	HEAT TREAT. SPEC.	DRAWN	CHECKED
SEE NOTE		RB	ARB
FINISH & SPEC. NO.	ELEC. DES. APP.	MECH. DES. APP.	
			MS-1514 B

MS-1515A



HOLES
A - 13/64 (.203) DIA. REQ'D.
12

6" HOLES - 60° APART

NOTICE TO PERSONS RECEIVING THIS DRAWING

THE TECHNICAL MATERIEL CORPORATION claims proprietary right in the material disclosed hereon. This drawing is issued in confidence for engineering information only and may not be reproduced or used to manufacture anything shown hereon without permission from THE TECHNICAL MATERIEL CORPORATION to the user. This drawing is loaned for mutual assistance and is subject to recall at any time.

Property of:

THE TECHNICAL MATERIEL CORPORATION
MAMARONECK, NEW YORK

Ref-2LD-557

ISSUE	ITEM	CHANGED FROM	DATE	CH. NO.	DRAFTS	CHECKER	ENG. APP.
A	1	3/16 Dia. Note Deleted	3-5-62	6486	EE	DB	DB

TOLERANCES		SCALE:	
DEC. DIM. ±	MAXIMUM ALLOWABLE TOLERANCES HAVE BEEN DETERMINED AND ANY DEVIATIONS WILL BE CAUSE FOR REJECTION.	1	GPT-10K FAX-137
FRAC. DIM. ±	REMOVE ALL BURRS AND SHARP EDGES	REQ. PER UNIT	MODEL PROJECT NO. ASS'Y. NO. DATE
ANGULAR DIM. ±			2-7-59

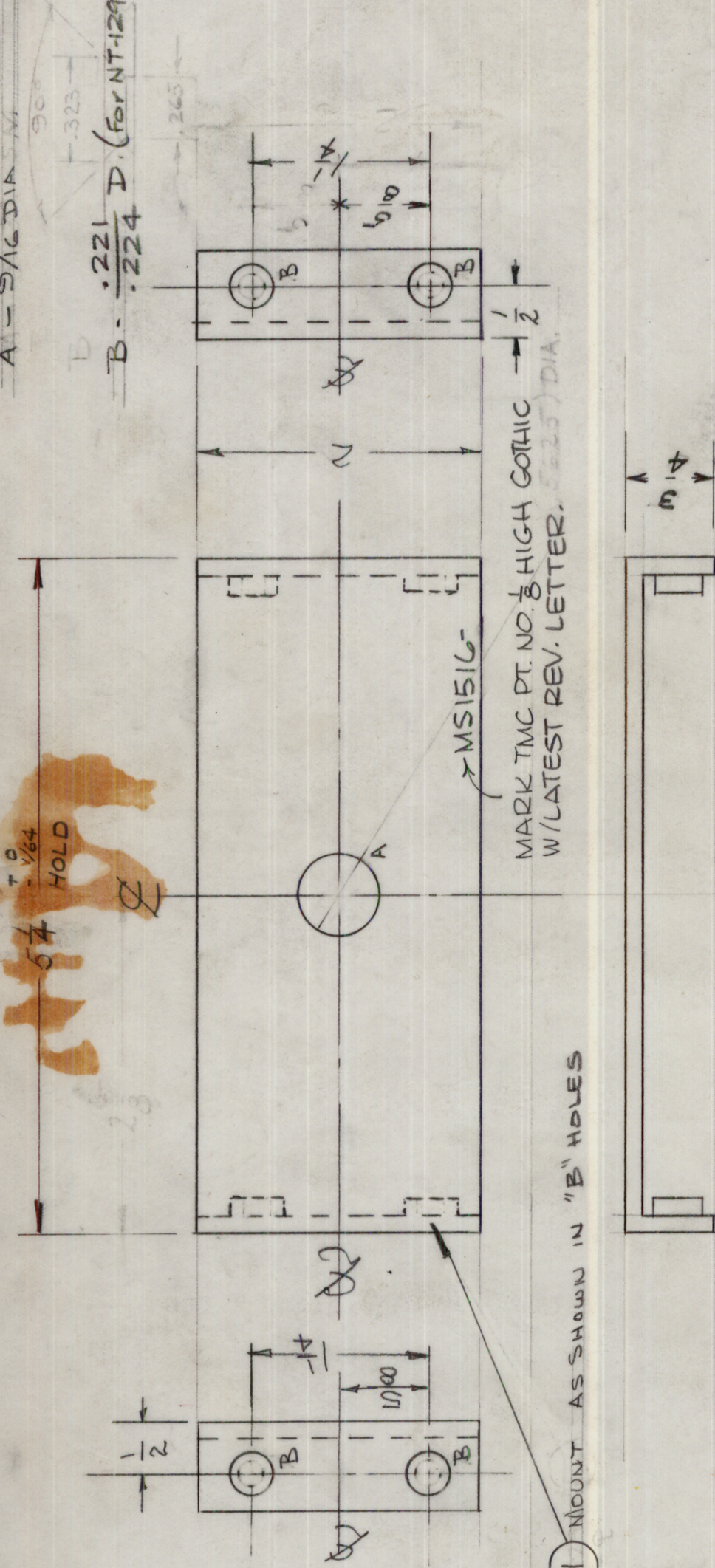
REQ. ITEM	PART NO.	DESCRIPTION	SYMBOL
	1/8 Thick	THE TECHNICAL MATERIEL CORP.	
	STOCK SIZE	MAMARONECK, NEW YORK	
	ALUMINUM	TOP, MOUNTING PLATE	
		OUTPUT CONDENSER	
	5052-H32	IORILLO	DB
	IRIDITE	DRAWN	CHECKED
		2B	2B
		FINISH & SPEC. NO.	MS-1515A
		ELEC. DES. APP.	MECH. DES. APP.

MS 1516 B

HOLES
A - DIA DIA

REQ'D
1 REQ

B - .221 D. (For NT-129-832-4) 4 Req.



1 MOUNT AS SHOWN IN "B" HOLES

NOTICE TO PERSONS RECEIVING THIS DRAWING

THE TECHNICAL MATERIEL CORPORATION claims proprietary right in the material disclosed hereon. This drawing is issued in confidence for engineering information only and may not be reproduced or used to manufacture anything shown hereon without permission from THE TECHNICAL MATERIEL CORPORATION to the user. This drawing is loaned for mutual assistance and is subject to recall at any time.

Property of:

THE TECHNICAL MATERIEL CORPORATION
MAMARONECK, NEW YORK

ISSUE ITEM	CHANGED FROM	DATE	CH. NO.	DRAFTS	CHECKER	ENG. APP.
B	ITEM 1 WAS CALLOUT ON PICT. ADDING PT. NO. 8	10.16.56	17492	440	QFB	QFB
A	B HOLE FOR NT-129 WAS DESIGNED FOR SM-107	12/4/59	1617	16	JM	JM

SCALE:

MAXIMUM ALLOWABLE TOLERANCES HAVE BEEN DETERMINED AND ANY DEVIATIONS WILL BE CAUSE FOR REJECTION. REMOVE ALL BURRS AND SHARP EDGES

TOLERANCES

DEC. DIM. ±
FRAC. DIM. ± 1/64
ANGULAR DIM. ±

REQ. ITEM	PART NO.	DESCRIPTION	SYMBOL
4	NT129-832-4	NUT, CLINCH	B
1/8 THICK		THE TECHNICAL MATERIEL CORP. MAMARONECK, NEW YORK	
ALUMINUM		SHAFT SUPPORT, OUTPUT	
5052-H32		CONDENSER	
TYPE & TEMPER		DRWN	10/14/59
HEAT TREAT. SPEC.		CHECKED	AMB
FINISH & SPEC. NO.		ELEC. DES. APP. MECH. DES. APP.	MS 1516 B
IRIDITE		FINAL APPROVAL	

1-23-59 DATE

ASSY. NO.

PROJECT NO. AX-137

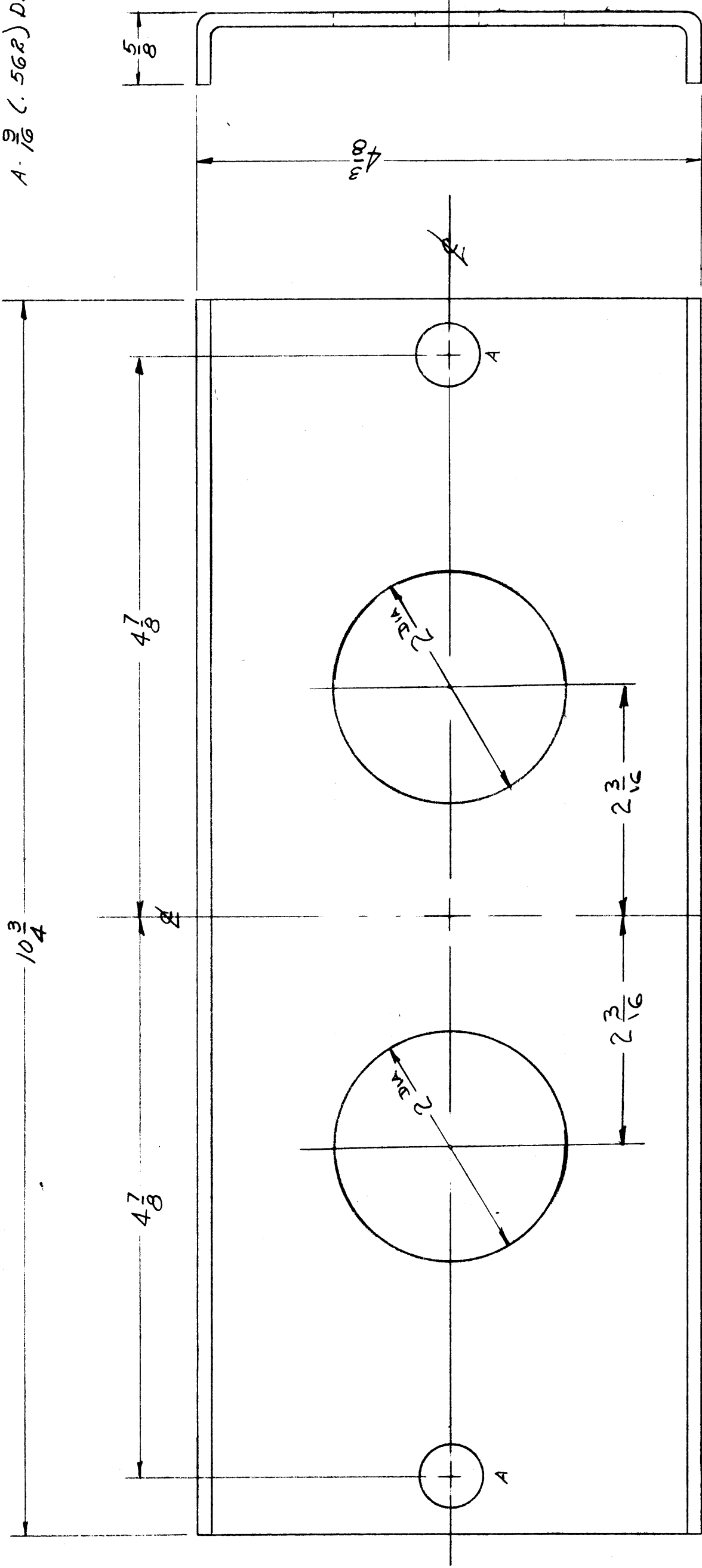
MODEL

REQ. PER UNIT

1

USED ON

A. $\frac{9}{16}$ (.562) D. Hole 2 Req.



NOTICE TO PERSONS RECEIVING THIS DRAWING

THE TECHNICAL MATERIEL CORPORATION claims proprietary right in the material disclosed hereon. This drawing is issued in confidence for engineering information only and may not be reproduced or used to manufacture anything shown hereon without permission from THE TECHNICAL MATERIEL CORPORATION to the user. This drawing is loaned for mutual assistance and is subject to recall at any time.

Property of:
THE TECHNICAL MATERIEL CORPORATION
 MAMARONECK, NEW YORK

Ref-2LD-569

REQ. ITEM	PART NO.	DESCRIPTION	SYMBOL
$\frac{1}{8}$ THICK		THE TECHNICAL MATERIEL CORP. MAMARONECK, NEW YORK	
ALUMINUM		BRACKET, CAPACITOR,	
MATERIAL		C801	
5052-H32		2-7-59	
TYPE & TEMPER	HEAT TREAT. SPEC.	DRAWN	CHECKED
5404 IRRI-DITE		RB	MS
FINISH & SPEC. NO.		ELEC. DES. APP. MECH. DES. APP.	FINAL APPROVAL
			MS-1519

REQ. PER UNIT	MODEL	PROJECT NO.	ASSY. NO.	DATE
1	GPT-1DK			2-7-59
USED ON				

ISSUE ITEM	CHANGED FROM	DATE	CH. NO.	DRAFTS	CHECKER	ENG. APP.

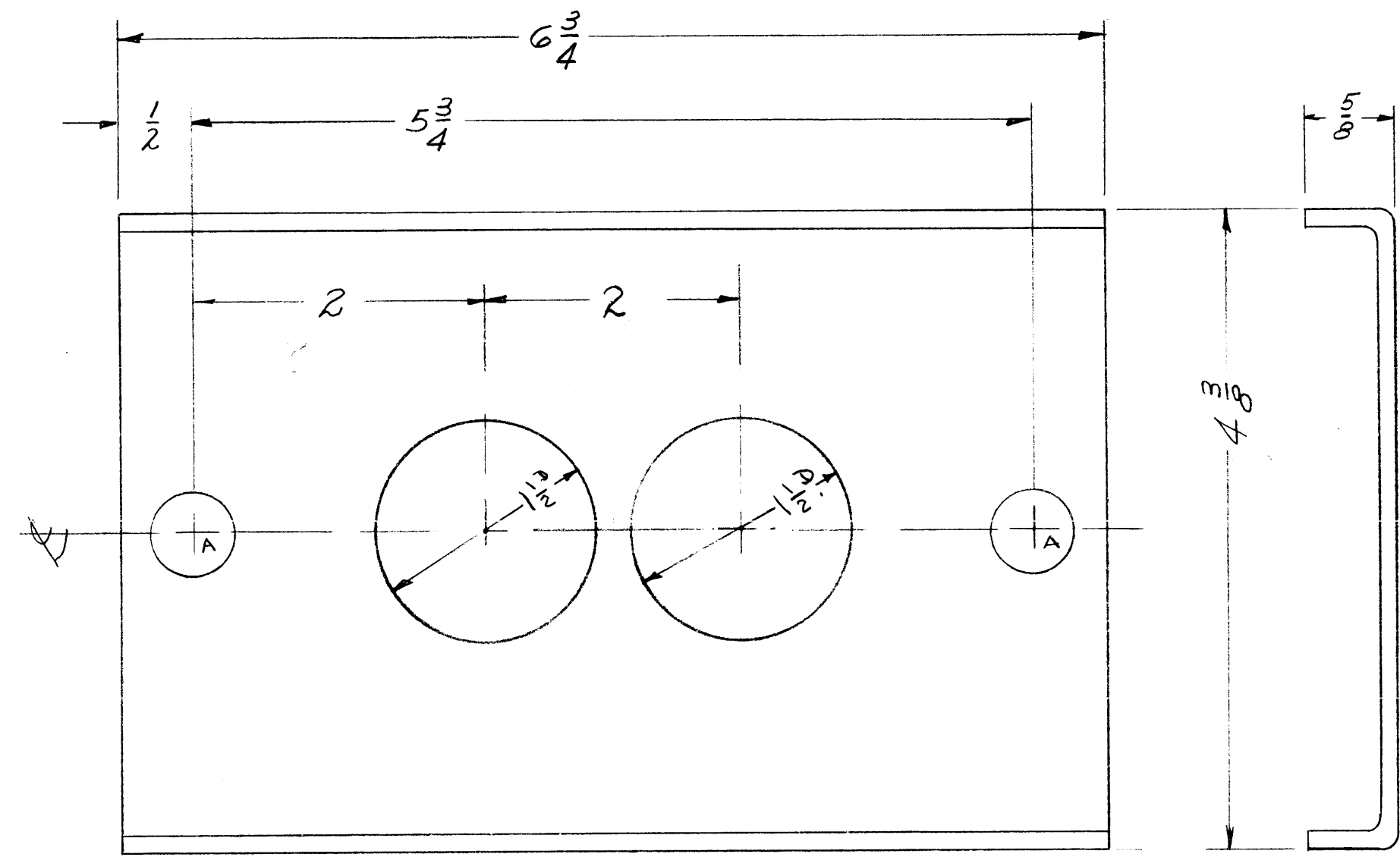
TOLERANCES
 DEC. DIM. \pm
 FRAC. DIM. \pm
 ANGULAR DIM. \pm

SCALE:
 MAXIMUM ALLOWABLE TOLERANCES HAVE BEEN DETERMINED AND ANY DEVIATIONS WILL BE CAUSE FOR REJECTION.
 REMOVE ALL BURRS AND SHARP EDGES

MS-1519

MS-1520

A-916(562)D17 2 REO



NOTICE TO PERSONS RECEIVING THIS DRAWING

THE TECHNICAL MATERIEL CORPORATION claims proprietary right in the material disclosed hereon. This drawing is issued in confidence for engineering information only and may not be reproduced or used to manufacture anything shown hereon without permission from THE TECHNICAL MATERIEL CORPORATION to the user. This drawing is loaned for mutual assistance and is subject to recall at any time.

Property of:
 THE TECHNICAL MATERIEL CORPORATION
 MAMARONECK, NEW YORK

Ref: 2LD-568

ISSUE	ITEM	CHANGED FROM	DATE	CH. NO.	DRAFTS	CHECKER	ENG. APP.
TOLERANCES		SCALE: <i>c/o</i>					
DEC. DIM. \pm		MAXIMUM ALLOWABLE TOLERANCES HAVE BEEN DETERMINED AND ANY DEVIATIONS WILL BE CAUSE FOR REJECTION.					
FRAC. DIM. \pm <i>1/64</i>		REMOVE ALL BURRS AND SHARP EDGES					
ANGULAR DIM. \pm							

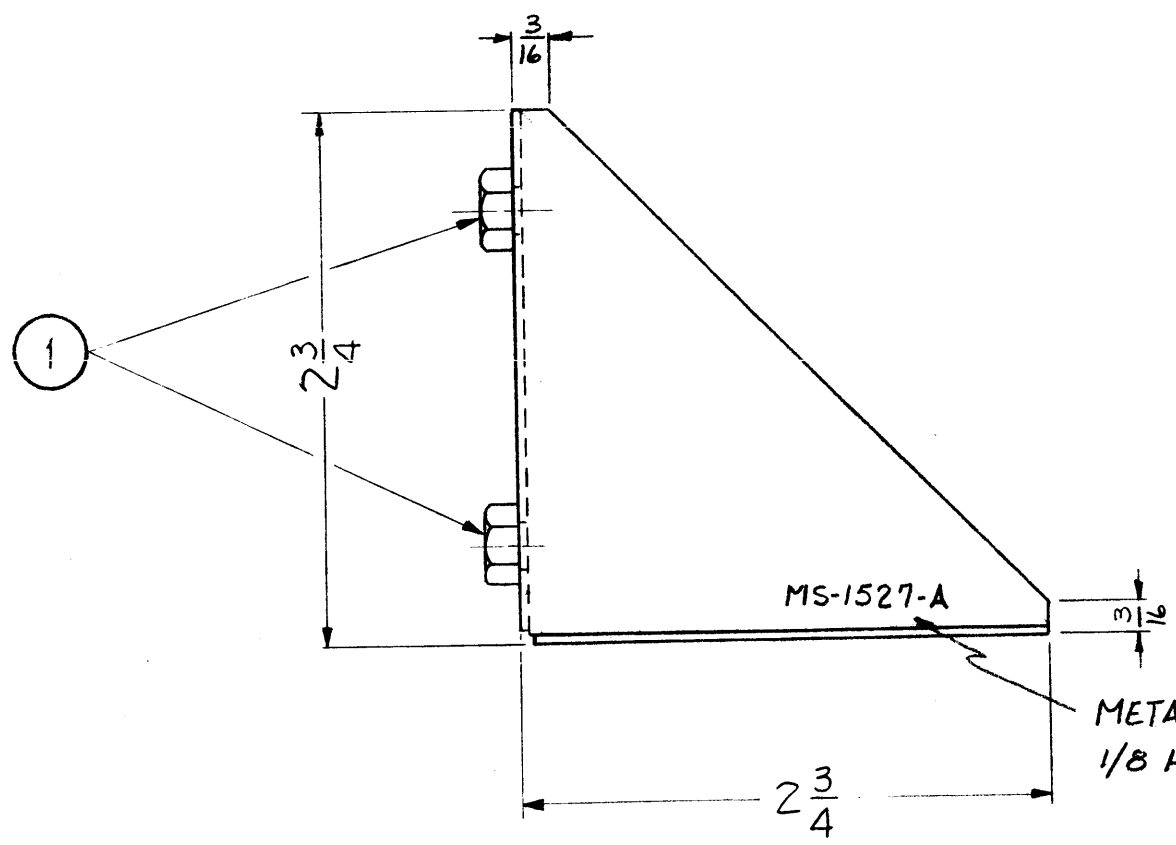
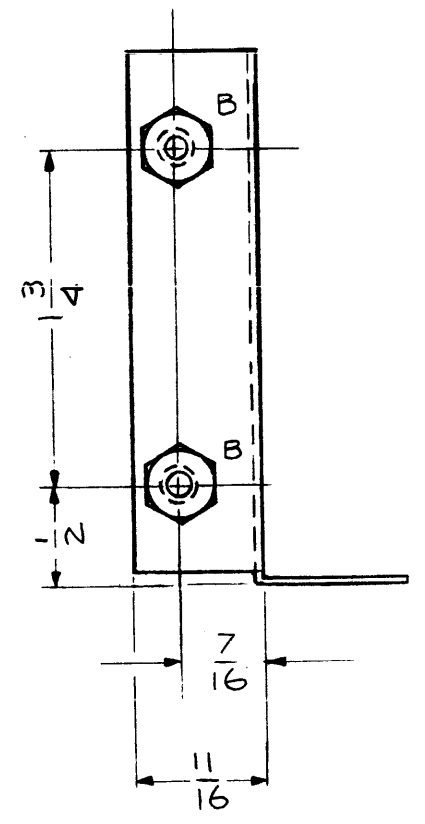
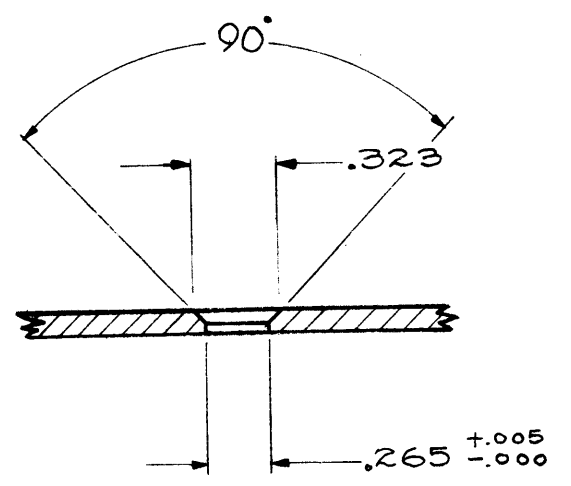
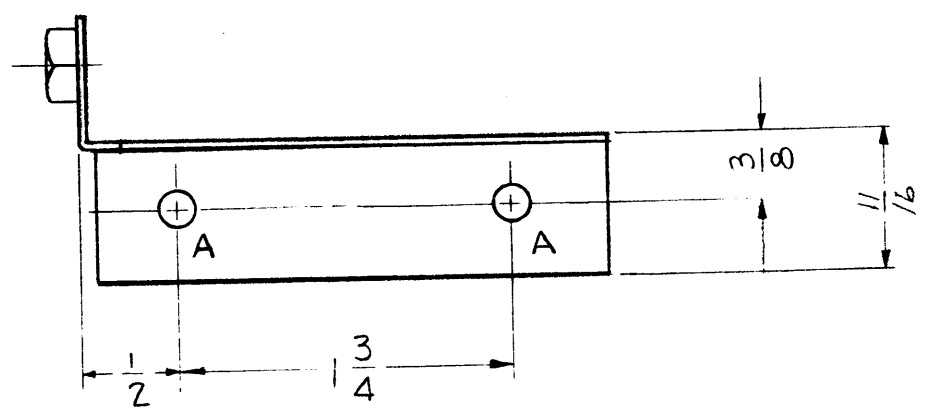
REQ. PER UNIT	MODEL	PROJECT NO.	ASS'Y. NO.	DATE
1	GDT-10KN	PS DECK	T1-105	2-7-59
USED ON				

REQ. ITEM	PART NO.	DESCRIPTION	SYMBOL
	<i>1/8 THICK</i>	THE TECHNICAL MATERIEL CORP. MAMARONECK, NEW YORK	BRACKET, CONDENSER
	STOCK SIZE		
	ALUMINUM		
MATERIAL			
5052 H32		2-7-59	<i>T1</i>
TYPE & TEMPER	HEAT TREAT. SPEC.	DRAWN	CHECKED
5404 IRRIDITE		<i>LB</i>	<i>QB</i>
FINISH & SPEC. NO.	ELEC. DES. APP.	MECH. DES. APP.	MS-1520

MS-1527A

A - 3/16 (.187) DIA.

2 REQ'D.



METAL STAMP TMC PART NO. 1/8 HIGH, GOTHIC.

NOTICE TO PERSONS RECEIVING THIS DRAWING

THE TECHNICAL MATERIEL CORPORATION claims proprietary right in the material disclosed hereon. This drawing is issued in confidence for engineering information only and may not be reproduced or used to manufacture anything shown hereon without permission from THE TECHNICAL MATERIEL CORPORATION to the user. This drawing is loaned for mutual assistance and is subject to recall at any time.

Property of:
THE TECHNICAL MATERIEL CORPORATION
MAMARONECK, NEW YORK

ISSUE	ITEM	CHANGED FROM	DATE	CH. NO.	DRAFTS	CHECKER	ENG. APP.
Δ	1	3/16" NOTCH ADDED	10-12-62	7414			

TOLERANCES
DEC. DIM. ±
FRAC. DIM. ±
ANGULAR DIM. ±

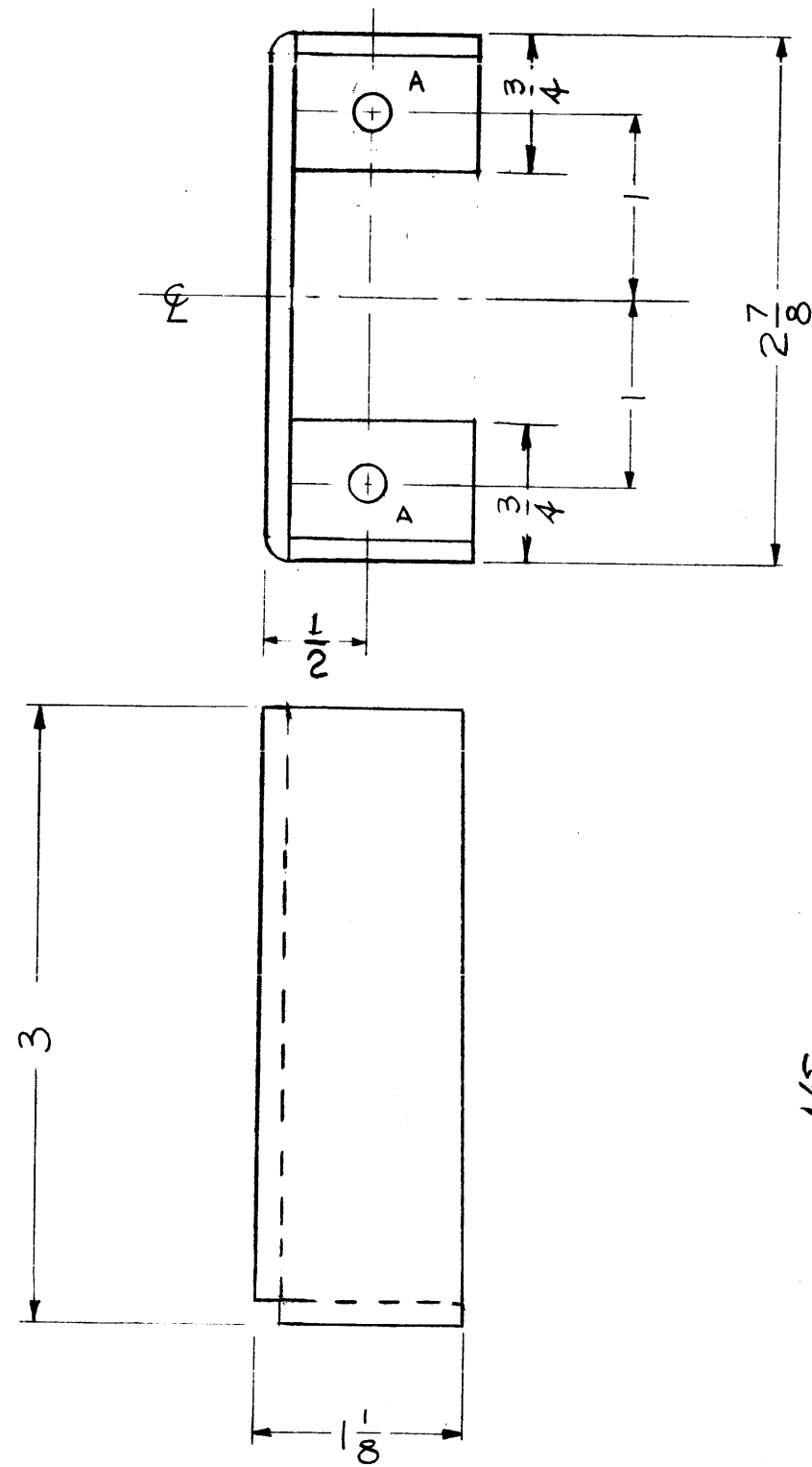
SCALE:
MAXIMUM ALLOWABLE TOLERANCES HAVE BEEN DETERMINED AND ANY DEVIATIONS WILL BE CAUSE FOR REJECTION. REMOVE ALL BURRS AND SHARP EDGES

REQ. PER UNIT	MODEL	PROJECT NO.	ASSY. NO.	DATE
1	GPT-10K	P.S.		1-30-59

USED ON

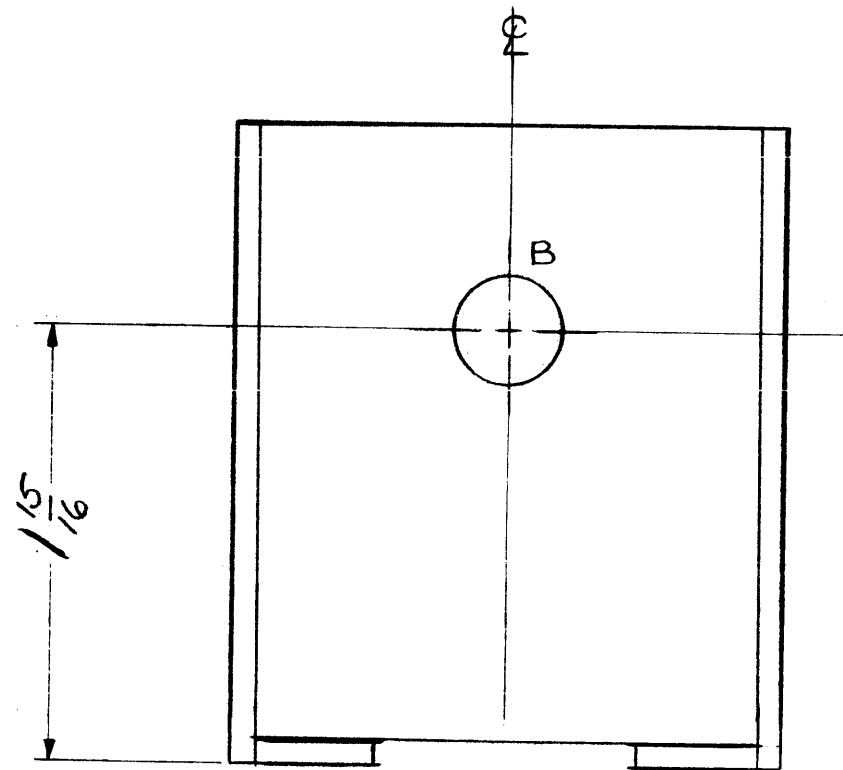
REQ.	ITEM	PART NO.	DESCRIPTION	SYMBOL
2	1	5M107-33	INSERT, HEXAGON	
		.064	THE TECHNICAL MATERIEL CORP. MAMARONECK, NEW YORK	
		ALUMINUM	RIGHT SIDE SUPPORT ZENER TERMINAL BOARD	
		5052-H32	J.C. BIELE	
		S-404 IRIDITE	LP	
			MS-1527A	

MS-1537 A



A ~ 13/64 DIA
 B ~ 9/16 DIA.

2 REQ'D.
 1 REQ'D.



NOTICE TO PERSONS RECEIVING THIS DRAWING

THE TECHNICAL MATERIEL CORPORATION claims proprietary right in the material disclosed hereon. This drawing is issued in confidence for engineering information only and may not be reproduced or used to manufacture anything shown hereon without permission from THE TECHNICAL MATERIEL CORPORATION to the user. This drawing is loaned for mutual assistance and is subject to recall at any time.

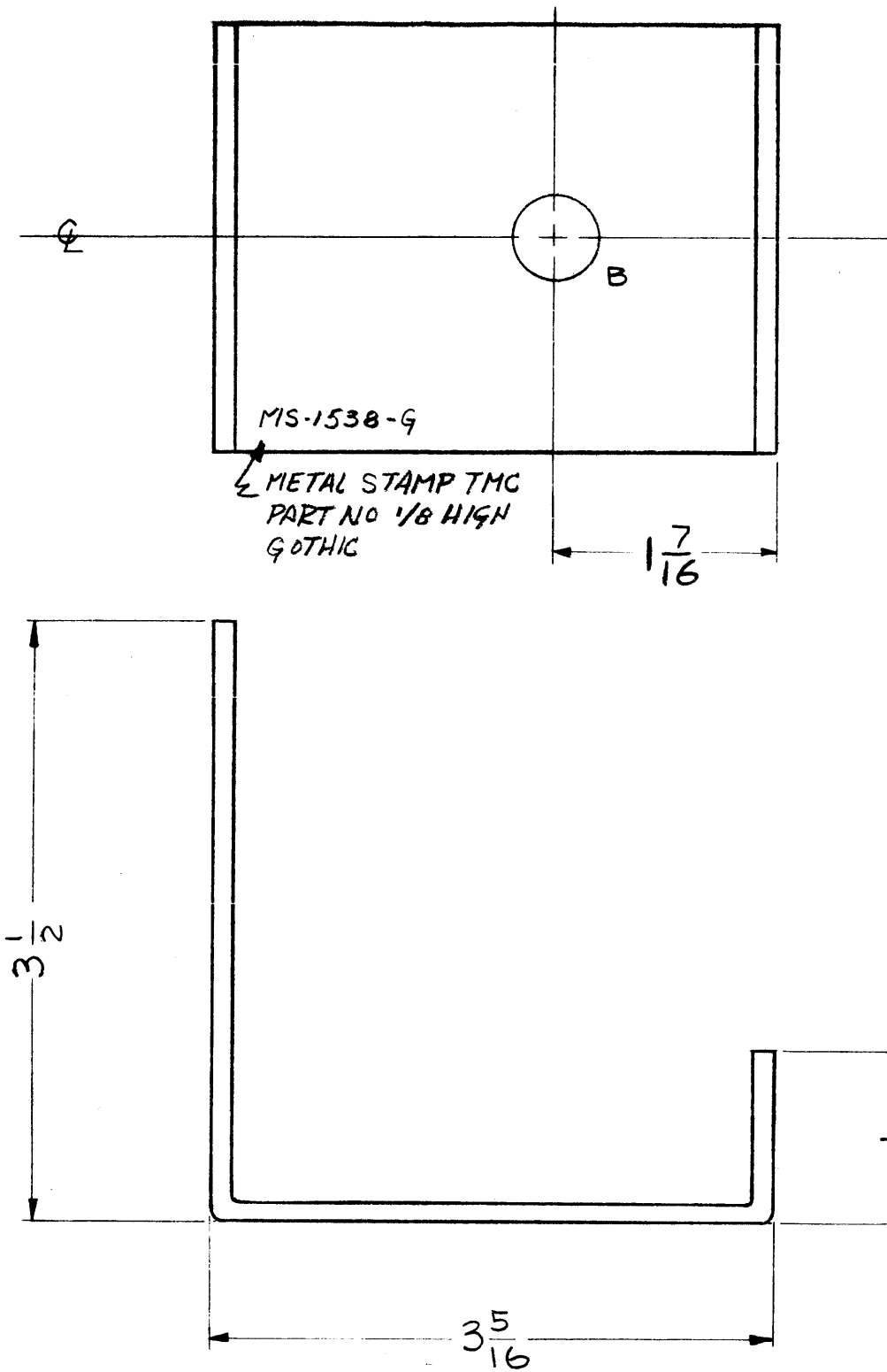
Property of:
 THE TECHNICAL MATERIEL CORPORATION
 MAMARONECK, NEW YORK

A	1	B' HOLE WAS 1/2 DIA	3-22-62	6518	G.S.	<i>[Signature]</i>	<i>[Signature]</i>
ISSUE	ITEM	CHAN ED FROM	DATE	CH. N.	DRAFTS	CHECKER	ENG. APP.
TOLERANCE		SCALE:					
DEC. DIM. ±		MAXIMUM ALL WABLE TOLERANCES HAVE BEEN DETERMINED AND ANY DEVIATIONS WILL BE CAUSE F R REJECTION: REMOVE ALL BURRS AND SHARP ED ES					
FRAC. DIM. ±							
ANGULAR DIM. ±							

1	GPT-10K	AX-137	AT-100	1-21-59
REQ. PER UNIT	MODEL	PROJECT N.	ASSY. N.	DATE
USED ON				

REQ.	ITEM	PART NO.	DESCRIPTION		SYMBOL
		1/8	THE TECHNICAL MATERIEL CORP.		
		STOCK SIZE	MAMARONECK, NEW YORK		
		ALUMINUM	GEAR SHAFT SUPPORT		
		MATERIAL	ANTENNA TUNER		
5052-H32		J.C. BIELE	<i>[Signature]</i>	<i>[Signature]</i>	
		TYPE & TEMPER	DRAWN	CHECKED	FINAL APPROVAL
		IRIDITE	<i>[Signature]</i>	<i>[Signature]</i>	MS-1537 A
		FINISH & SPEC. NO.	ELEC. DES. APP	MECH. DES. APP	

MS-1538 G



A ~ 13/64 X 13/32 SLOTS
 B ~ 1/2 (.500) DIA.
 C ~ 5/8 (.625) DIA.

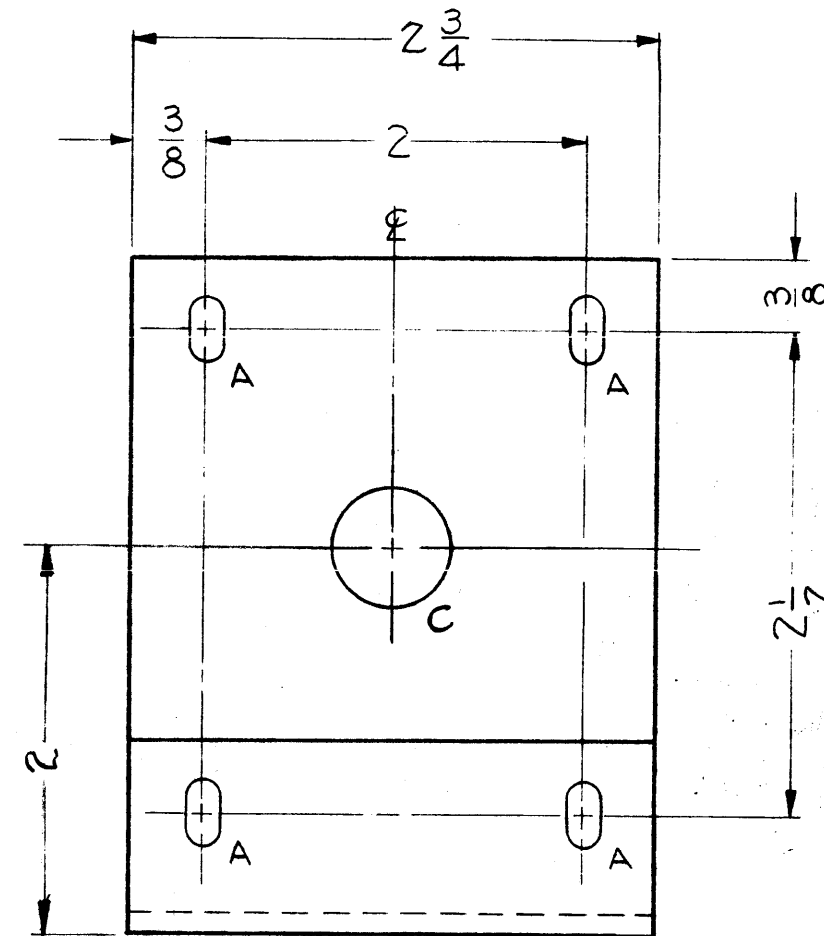
4 REQ'D.

NOTICE TO PERSONS RECEIVING THIS DRAWING

THE TECHNICAL MATERIEL CORPORATION claims proprietary right in the material disclosed hereon. This drawing is issued in confidence for engineering information only and may not be reproduced or used to manufacture anything shown hereon without permission from THE TECHNICAL MATERIEL CORPORATION to the user. This drawing is loaned for mutual assistance and is subject to recall at any time.

Property of:

THE TECHNICAL MATERIEL CORPORATION
 MAMARONECK, NEW YORK



REV	ITEM	CHANGED FROM	DATE	CH. NO.	DRAFTS	CHECKER	ENG. APP.
9	1	DIM 2" WAS 2-1/4	11-26-62	7425			

TOLERANCES		SCALE:	
DEC. DIM. ±		MAXIMUM ALLOWABLE TOLERANCES HAVE BEEN DETERMINED AND ANY DEVIATIONS WILL BE CAUSE FOR REJECTION: REMOVE ALL BURRS AND HARP EDGES	
FRACTIONAL DIM. ±			
ANGULAR DIM. ±			

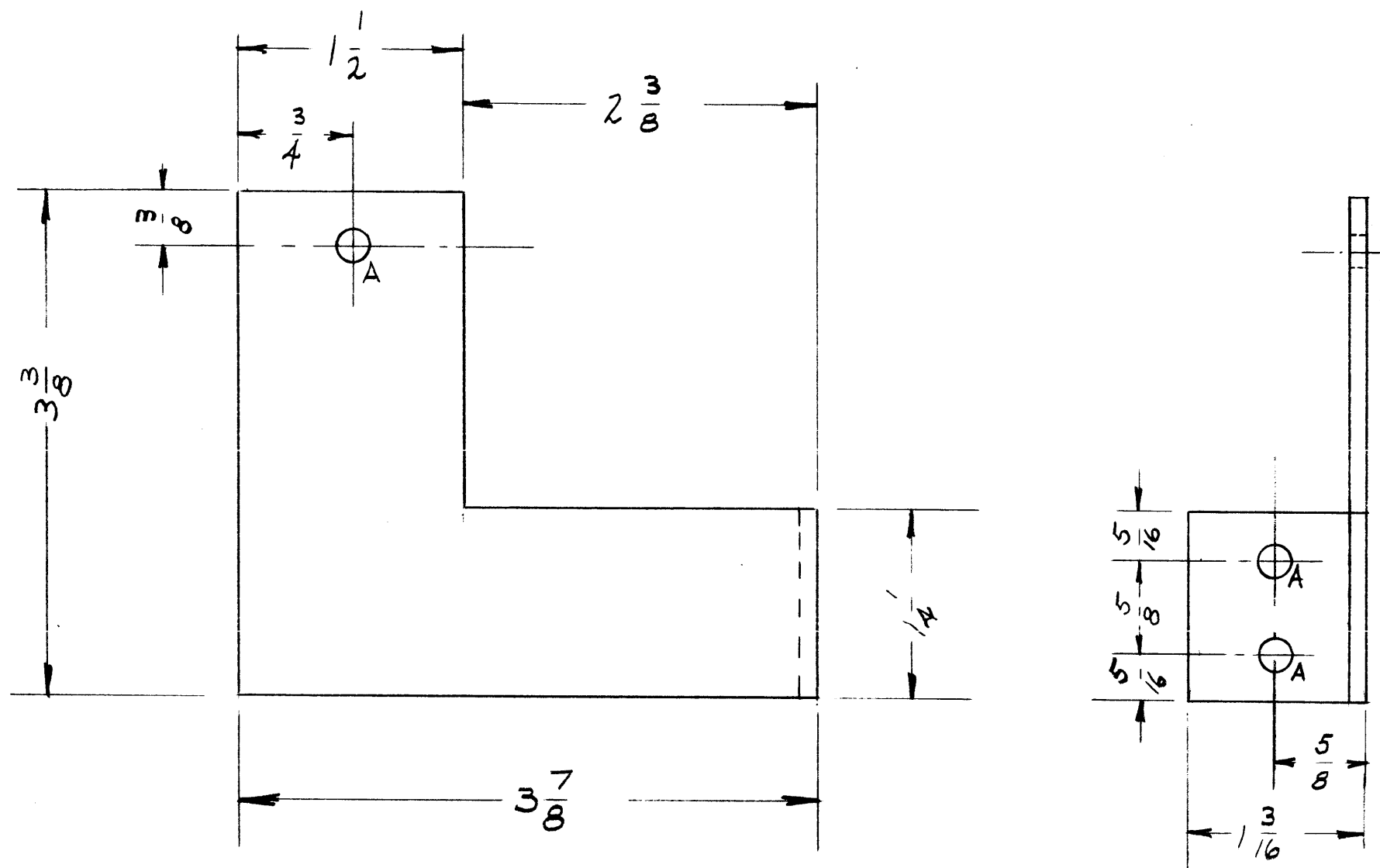
1	GPT-10K	AX-137		1-31-59
RE PER UNIT	MODEL	PROJECT NO.	ASSY. NO.	DATE

REQ.	ITEM	PART NO.	DESCRIPTION	SYMBOL
		1/8	THE TECHNICAL MATERIEL CORP.	
		STOCK SIZE	MAMARONECK, NEW YORK	
		ALUMINUM	BRACKET, SUPPORT RIGHT	
		MATERIAL	ANGLE DRIVE, ANTENA TUNER	
		5052-H32	J.C. BIELE	
		TYPE & TEMPER	DRAWN	
		HEATTREAT. SPEC.	CHECKED	
		IRIDITE	ZB	
		FINISH & SPEC. NO.	2B	
		ELEC. DES. APP.	MECH. DES. APP.	
				MS-1538 G

MS-1541

A- 13/64 DIA

REQ'D.
3



NOTICE TO PERSONS RECEIVING THIS DRAWING

THE TECHNICAL MATERIEL CORPORATION claims proprietary right in the material disclosed hereon. This drawing is issued in confidence for engineering information only and may not be reproduced or used to manufacture anything shown hereon without permission from THE TECHNICAL MATERIEL CORPORATION to the user. This drawing is loaned for mutual assistance and is subject to recall at any time.

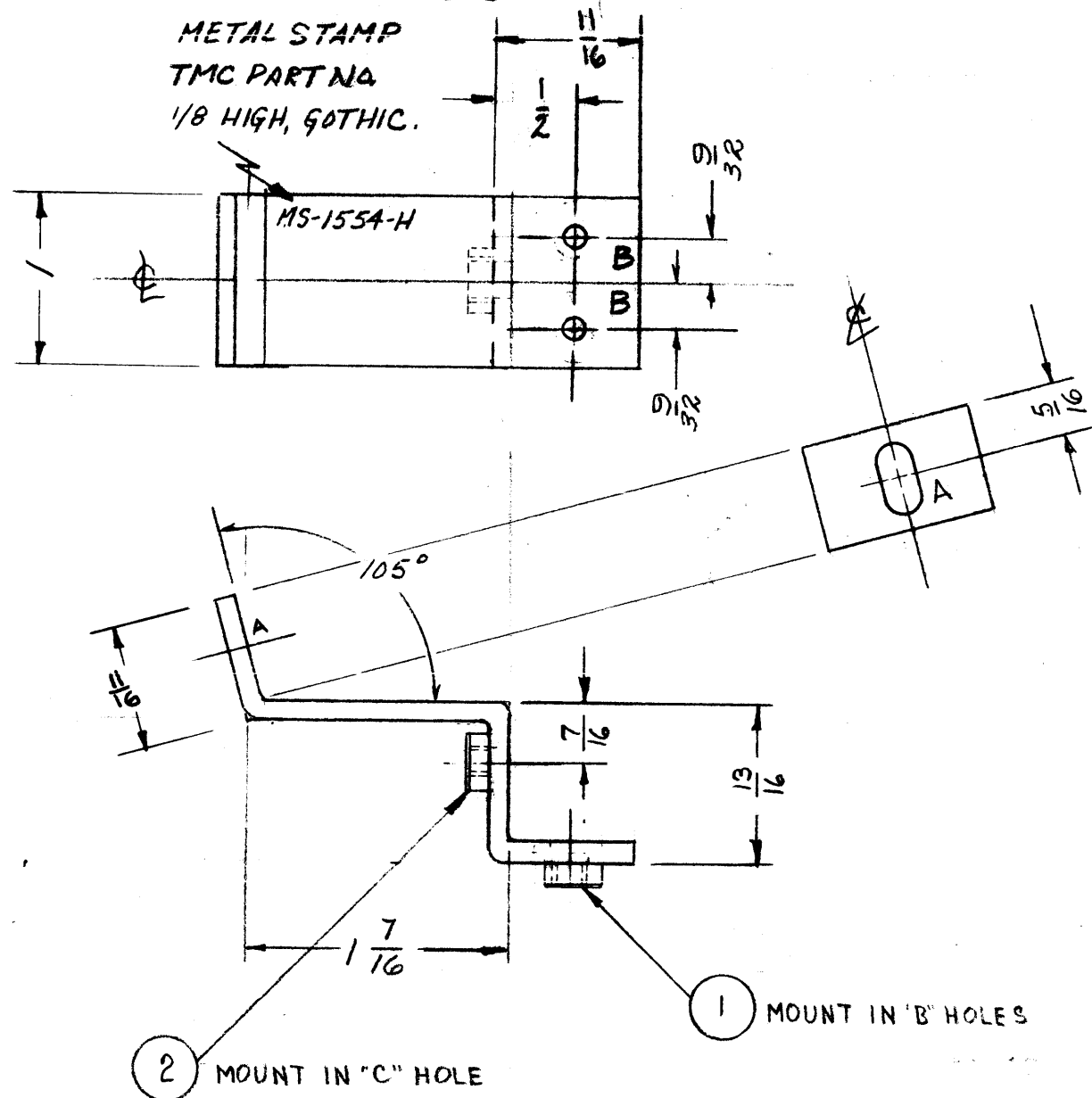
Property of:
THE TECHNICAL MATERIEL CORPORATION
MAMARONECK, NEW YORK

ISSUE	ITEM	CHANGED FR M	DATE	CH. NO.	DRAFTS	CHECKER	ENG. APP.
TOLERANCES			SCALE:				
DEC. DIM. ±			MAXIMUM ALL WABLE TOLERANCES HAVE BEEN DETERMINED AND ANY DEVIATIONS WILL BE CAUSE FOR REJECTION: REMOVE ALL BURRS AND HARP EDGES				
FRAC. DIM. ±							
ANGULAR DIM. ±							

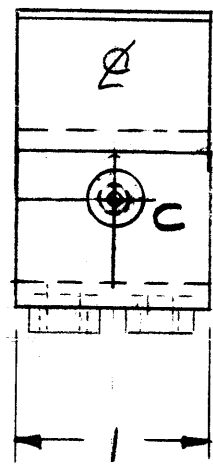
1	GPT-10K			2-10-59
REQ. PER UNIT	MODEL	PROJECT NO.	ASSY. NO.	DATE
USED ON				

REQ. ITEM	PART NO.	DESCRIPTION	SYMBOL
1/8 THICK		THE TECHNICAL MATERIEL CORP.	
STOCK SIZE		MAMARONECK, NEW YORK	
ALUMINUM		Bracket, Metering T.B.	
MATERIAL		GPT-10000	
5052-H32			
TYPE & TEMPER	HEATTREAT. SPEC.	DRAWN	CHECKED
IRIDITE		Z.B.	Z.B.
FINI H SPEC. NO.		MECH. DE .APP	
			MS-1541

MS-1554 H



A- $\frac{13}{64} \times \frac{13}{32}$ SLOT 1 Req
 B- $\frac{.191}{.194}$ D. For NT-129-632-4 2 Req
 C- $\frac{.221}{.224}$ D. For NT-129-832-4 1 Req



NOTICE TO PERSONS RECEIVING THIS DRAWING

THE TECHNICAL MATERIEL CORPORATION claims proprietary right in the material disclosed hereon. This drawing is issued in confidence for engineering information only and may not be reproduced or used to manufacture anything shown hereon without permission from THE TECHNICAL MATERIEL CORPORATION to the user. This drawing is loaned for mutual assistance and is subject to recall at any time.

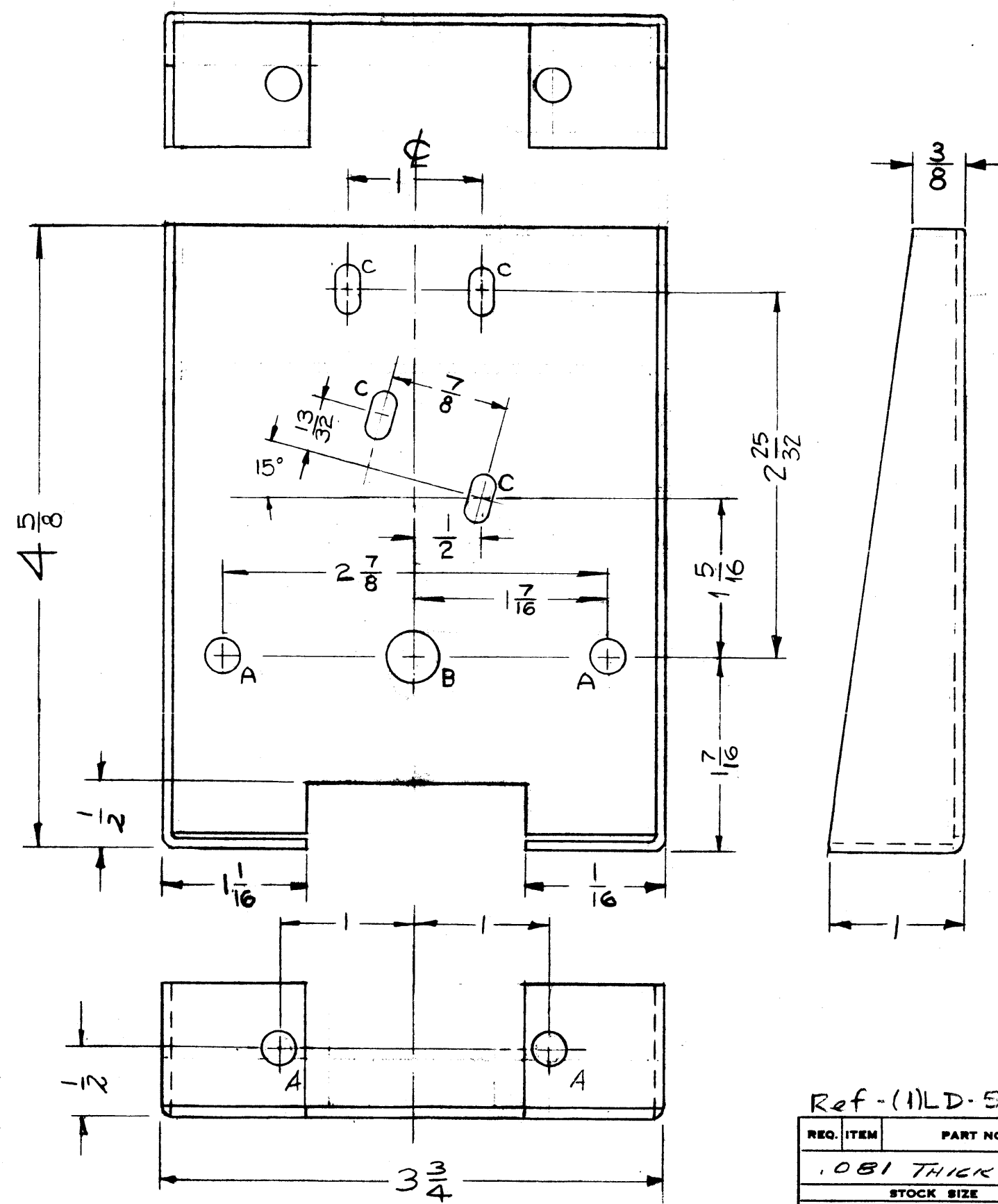
Property of:

THE TECHNICAL MATERIEL CORPORATION
 MAMARONECK, NEW YORK

H	1	A'SLOT WAS $\frac{13}{64}$ D. HOLE	11-8-62	7630	GR	JL	JL
G	2	C HOLE WAS C. SINK FOR SM-107-33 (8-32)	8-22-60	2831	RL	JCS	JL
F	1	B HOLE WAS C. SINK FOR SM-107-33 (8-32)	2-26-60	1871	M.F.	JL	JL
	3	DIM. $\frac{1}{8}$ DELETED					
E	2	DIM. $\frac{7}{16}$ ADDED	2-4-60	1823	M.F.	JL	JL
	1	DIM. $\frac{13}{16}$ ADDED					
D	1	GPT-40K ADDED	1-27-60	-	M.F.	JL	JL
C	1	S-404 WAS S-101	12/15/59	1001	MS	JL	EMN
B	1	NT-129's were SM-107's HOLE CHECK'D	12/10/59	1649	JL	JL	JL
A	1	REDIMENSIONED	" 25 59	1595	JL	JL	JL

3	AT-101	GPT-40K	1-27-60
3	AM-109	GPT-40K	1-27-60
2	AX-107	GPT-10K	2-18-59
3	AX-173	GPT-10K	2-18-59
REQ. PER UNIT	MODEL	PROJECT NO.	A BY. NO.
			DATE

1	2	NT-129-832-4	NUT ROUND SWAGE	C
2	1	NT-129-632-4	NUT ROUND SWAGE	B
REQ. ITEM		PART NO.	DESCRIPTION	SYMBOL
			.064	
			STOCK SIZE	
			ALUMINUM	
			SUPPORT PANEL BOTTOM	
			MATERIAL	
			5052-H32	
			TYPE & TEMPER	HEAT TREAT. PEG.
			S-404 YELLOW IRIDISE	
			5114 ZINC CHROMATE	
			2115 THE GRAY	
			FINISH & SPEC. NO.	
			DRAWN	FINAL APPR.
			JL	JL
			MS-1554 H	



- A ~ 1/4 D. 4 REQ.
- B ~ 3/8 D. 1 REQ.
- C ~ 11/64 X 11/32 SLOT 4 REQ.

NOTICE TO PERSONS RECEIVING THIS DRAWING

THE TECHNICAL MATERIEL CORPORATION claims proprietary right in the material disclosed hereon. This drawing is issued in confidence for engineering information only and may not be reproduced or used to manufacture anything shown hereon without permission from THE TECHNICAL MATERIEL CORPORATION to the user. This drawing is loaned for mutual assistance and is subject to recall at any time.

Property of:
THE TECHNICAL MATERIEL CORPORATION
MAMARONECK, NEW YORK

ISSUE	ITEM	CHANGED FROM	DATE	CH. NO.	DRAFTS	CHECKER	ENG. APP.
F	1	LIP DELETED (BOTTOM VIEW)	3-27-62	6538	G.S.	<i>[Signature]</i>	<i>[Signature]</i>
E	1	3/8" LIP DELETED	3-2-61	4292	M.A.F.	<i>[Signature]</i>	<i>[Signature]</i>
D	2	2 - 25/32 DIM WAS 7-23/32	10/26/60	3317	J.C.B.	<i>[Signature]</i>	<i>[Signature]</i>
	1	1 - 5/16 DIM WAS 1 - 3/16					
C	1	(2) "C" SLOTS DELETED, WERE 1/8 X 1/4	8-1-60	2671	C.A.	<i>[Signature]</i>	<i>[Signature]</i>
	2	4 - 3/8 DIM. WAS 3 - 5/8					
	3	(4) "C" SLOTS ADDED					
B	1	1 7/16 DIM. WAS 1 3/8 DIM.	7-22-60	2618	C.A.	<i>[Signature]</i>	<i>[Signature]</i>
A	1	1 1/16 WAS 1 1/4 ADDED 1/2 CUT OUT	4-1-60	976	<i>[Signature]</i>	<i>[Signature]</i>	<i>[Signature]</i>

TOLERANCES
DEC. DIM. ±
FRAC. DIM. ± 1/64
ANGULAR DIM. ±

SCALE:
MAXIMUM ALLOWABLE TOLERANCES HAVE BEEN DETERMINED AND ANY DEVIATIONS WILL BE CAUSE FOR REJECTION.
REMOVE ALL BURRS AND SHARP EDGES

REQ. PER UNIT	MODEL	PROJECT N.	ASS'Y. NO.	DATE
2	GPT-40K	AX-215 AX-238 AX-236	10-KMD	3-2-61 3-2-61 4-1-60
1	GPT-10K	AX-137		

USED ON

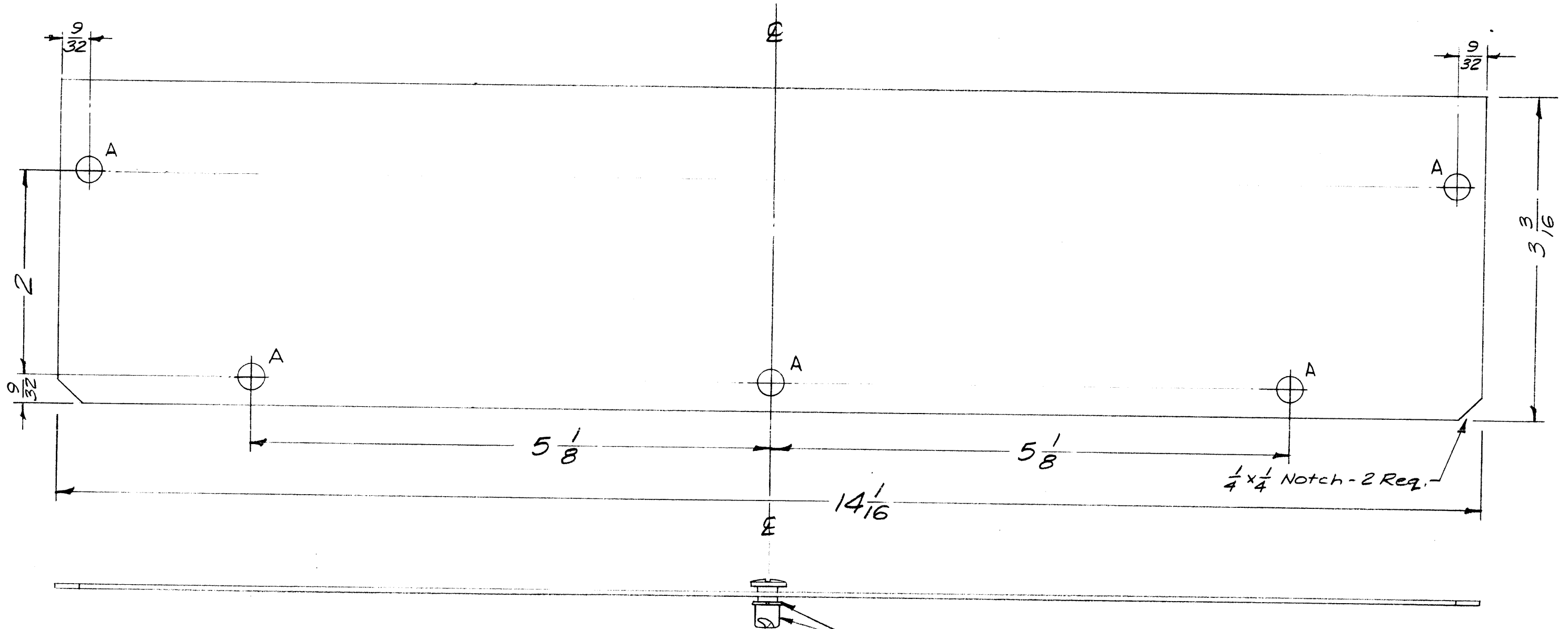
Ref - (1) LD-556 FOR 10K, LD-833(1) FOR 40K

REQ. ITEM	PART NO.	DESCRIPTION	SYMBOL
		THE TECHNICAL MATERIEL CORP. MAMARONECK, NEW YORK	
		BRACKET, DETENT BAND SWITCH	
		ALUMINUM	
		5052-H32	
		5404 IRIDIUM	
		FINISH & SPEC. N.	
		TYPE & TEMPER	
		HEAT TREAT. SPEC.	
		DRAWN	
		CHECKED	
		FINAL APPROVAL	
		ELEC. DES. APP.	
		MECH. DES. APP.	

MS-1567 F

MS-1574 A

HOLES ———
 A- $\frac{1}{4}$ DIA. ——— 5 Req



NOTE TO PERSONS RECEIVING THIS DRAWING

THE TECHNICAL MATERIEL CORPORATION claims proprietary right in the material disclosed hereon. This drawing is issued in confidence for engineering information only and may not be reproduced or used to manufacture anything shown hereon without permission from THE TECHNICAL MATERIEL CORPORATION to the user. This drawing is loaned for mutual assistance and is subject to recall at any time.

Mount in all holes as shown.
 FS-110-1, Stud, 5 Req.
 FS-109-3, Ring, 5 Req.

Property of:

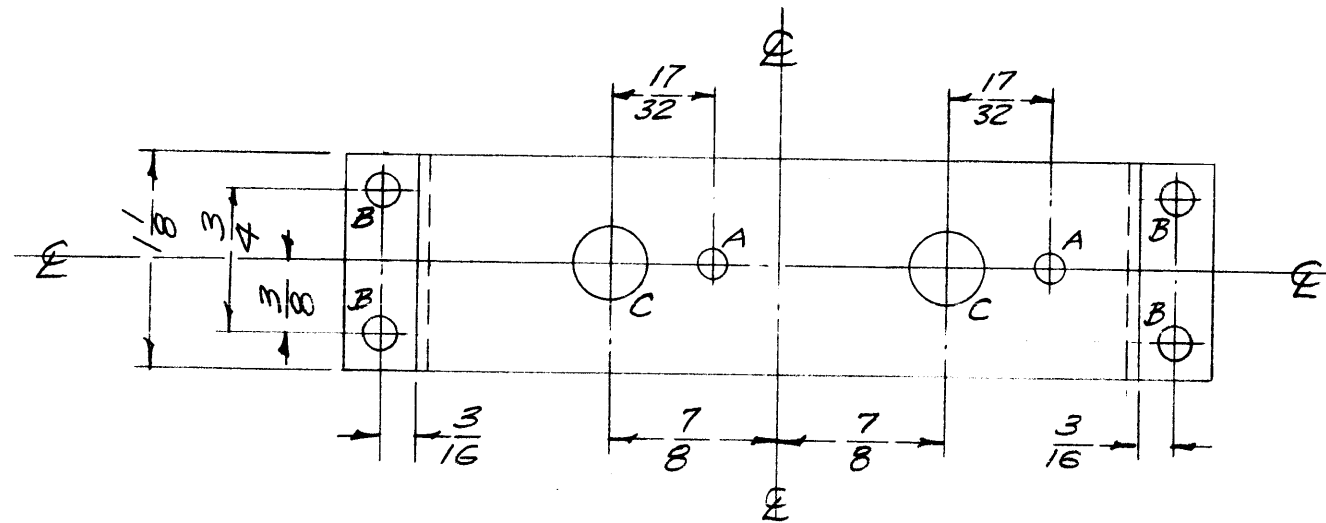
THE TECHNICAL MATERIEL CORPORATION
 MAMARONECK, NEW YORK

A	1	A Hole dia's. CALLED OUT	5-15-61	4883	RU.		
ISSUE	ITEM	CHANGED FROM	DATE	CH. NO.	DRAFTS	CHECKER	ENG. APP.
TOLERANCES			SCALE: <i>FULL - Do Not Scale</i>				
DEC. DIM. \pm			MAXIMUM ALLOWABLE TOLERANCES HAVE BEEN DETERMINED AND ANY DEVIATIONS WILL BE CAUSE FOR REJECTION.				
FRAC. DIM. $\pm 1/64$			REMOVE ALL BURRS AND SHARP EDGES				
ANGULAR DIM. \pm							

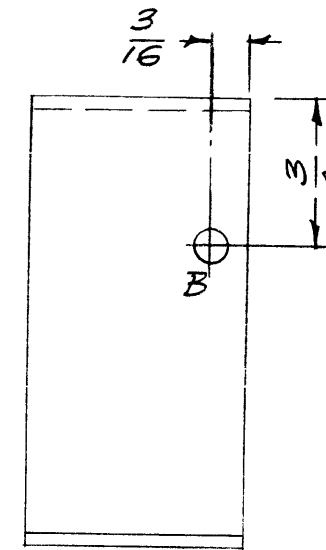
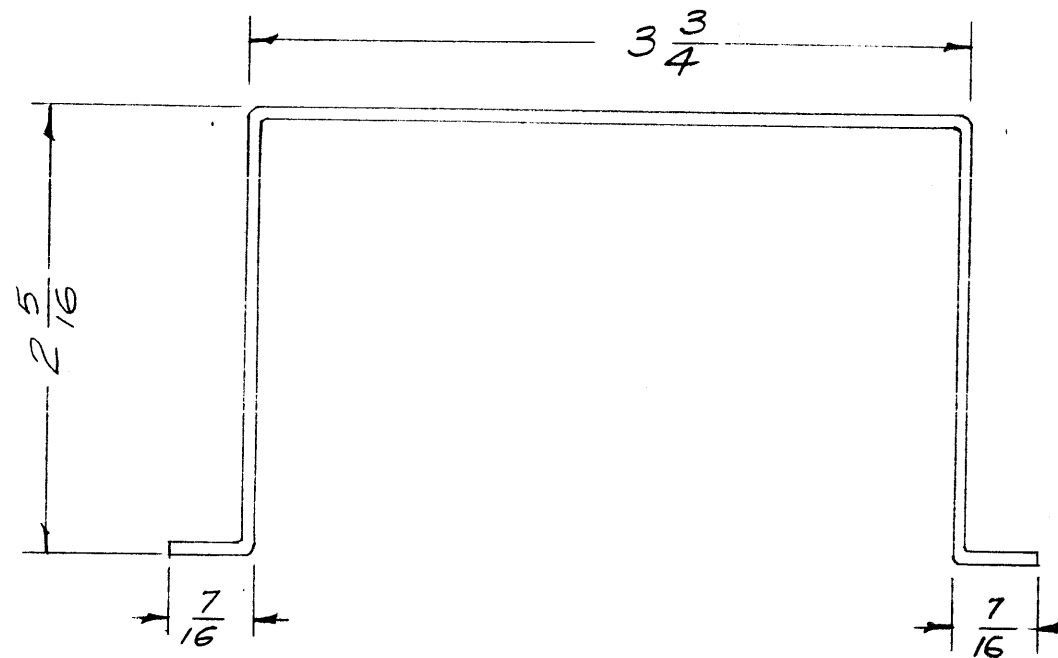
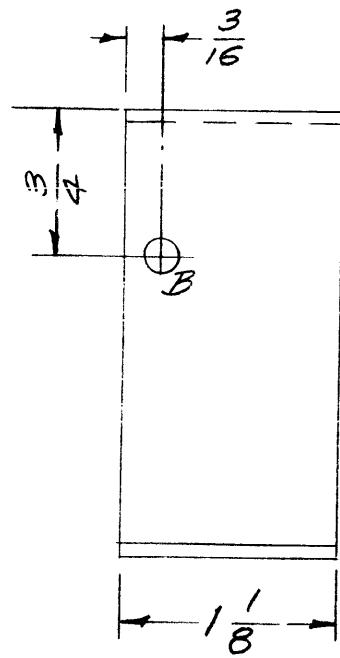
2	SLM	P/O GPT-10K	2-17-59
REQ. PER UNIT	MODEL	PROJECT NO.	ASS'Y. NO.
			DATE
USED ON			

REQ. ITEM	PART NO.	DESCRIPTION	SYMBOL
.051 THK		THE TECHNICAL MATERIEL CORP. MAMARONECK, NEW YORK	COVER
STOCK SIZE			
ALUMINUM		(SIDE BAND LEVEL MONITOR)	
MATERIAL		162/17/59	
5052-H32		JAD	
TYPE & TEMPER	HEAT TREAT. SPEC.	DRAWN	CHECKED
5404 Iridite		RWB	RWB
FINISH & SPEC. NO.		ELEC. DES. APP.	MECH. DES. APP.
		MS-1574	A

MS-1575



- A - $\frac{9}{64}$ (.140) D. 2 Req.
- B - $\frac{5}{32}$ (.156) D. 6 Req.
- C - $\frac{3}{8}$ (.375) D. 2 Req.



NOTICE TO PERSONS RECEIVING THIS DRAWING

THE TECHNICAL MATERIEL CORPORATION claims proprietary right in the material disclosed hereon. This drawing is issued in confidence for engineering information only and may not be reproduced or used to manufacture anything shown hereon without permission from THE TECHNICAL MATERIEL CORPORATION to the user. This drawing is loaned for mutual assistance and is subject to recall at any time.

Property of:
THE TECHNICAL MATERIEL CORPORATION
MAMARONECK, NEW YORK

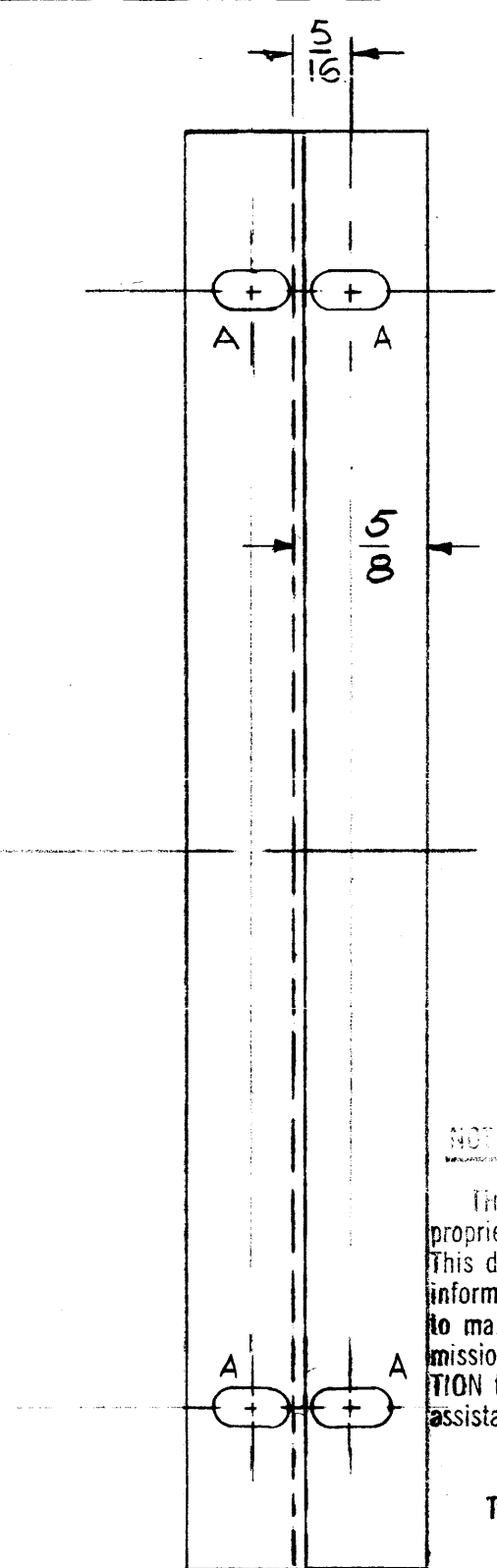
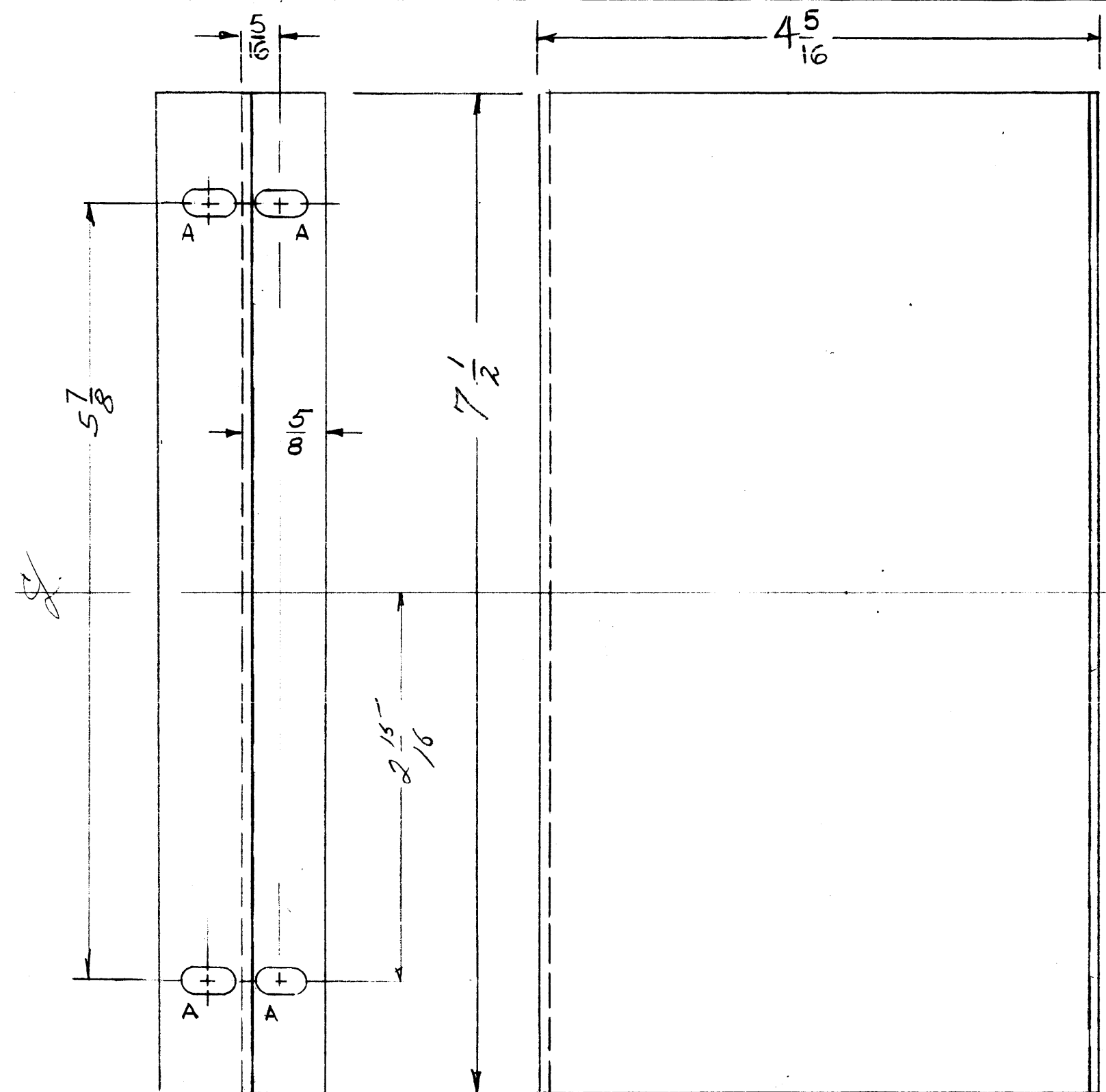
Ref: 1LD-510

ISSUE	ITEM	CHANGED FROM	DATE	CH. NO.	DRAFTS	CHECKER	ENG. APP.
TOLERANCES							
DEC. DIM. \pm			SCALE: Full - Do Not Scale				
FRAC. DIM. \pm 1/64			MAXIMUM ALLOWABLE TOLERANCES HAVE BEEN DETERMINED AND ANY DEVIATIONS WILL BE CAUSE FOR REJECTION.				
ANGULAR DIM. \pm			REMOVE ALL BURRS AND SHARP EDGES				

1	SLM	SLM	P/OGPT-10K	2-17-59
REQ. PER UNIT	MODEL	PROJECT NO.	ASS'Y. NO.	DATE
USED ON				

REQ. ITEM	PART NO.	DESCRIPTION			SYMBOL
.064 THK		THE TECHNICAL MATERIEL CORP. MAMARONECK, NEW YORK			
STOCK SIZE		BRACKET, POTENTIOMETER (SIDE BAND LEVEL MONITOR)			
Aluminum					
MATERIAL					
5052-H32		16 ² /17/59	Jhe	JB	MRB
TYPE & TEMPER	HEAT TREAT. SPEC.	DRAWN	CHECKED	FINAL APPROVAL	
5404 Iridite		Jhe	Jhe	MS-1575	
FINISH & SPEC. NO.		ELEC. DES. APP.	MECH. DES. APP.		

MS-1580 F



HOLES -
 A - $\frac{13}{64} \times \frac{13}{32}$ SLOTS
 4 REQ.

NOTICE TO PERSONS RECEIVING THIS DRAWING
 THE TECHNICAL MATERIEL CORPORATION claims proprietary right in the material disclosed hereon. This drawing is issued in confidence for engineering information only and may not be reproduced or used to manufacture anything shown hereon without permission from THE TECHNICAL MATERIEL CORPORATION to the user. This drawing is loaned for mutual assistance and is subject to recall at any time.
 Property of:
 THE TECHNICAL MATERIEL CORPORATION
 MAMARONECK, NEW YORK

F	1	1- 5/8 Dia. Hole Deleted	12-19-61	6073	S. B.	MS	OSB
D	1	S-404 WAS S-101	12/15/59	1001	ARB		EMN
C	1	13/64 X 13/32 SLOT WAS 13/64 HOLE	10-23-59	1474	AM	JCB	ARB
B	1	4 5/16 WAS 4 1/8	4/15/59		AM	HE	ARB
A	1	4 1/8 WAS 4 1/16, 7 1/2 WAS 7 3/16	5/30/59				ARB
A	2	ADDED 1 5/8 HOLE					ARB

F 1 DIM. TO CTR. OF "A" SLOT $\frac{5}{16}$ WAS $\frac{9}{32}$ 6-29-62 6864 V.R.R. JCB OSB

2	GPT-10K	AUX FRAME		2-18-59
REQ. PER UNIT	MODEL	PROJECT NO.	ASS'Y. NO.	DATE
USED ON				

REQ. ITEM	PART NO.	DESCRIPTION	SYMBOL
	.057	STOCK SIZE	
	ALUMINUM	END PLATE	
		METER BOX	AUX. PACK
	5052 S H32		AM
			ARB
			EMN
			ARB
			MS-1580 F