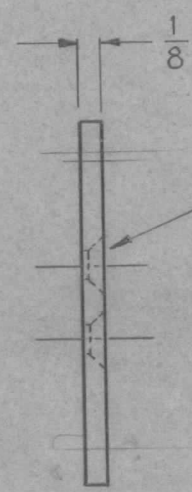
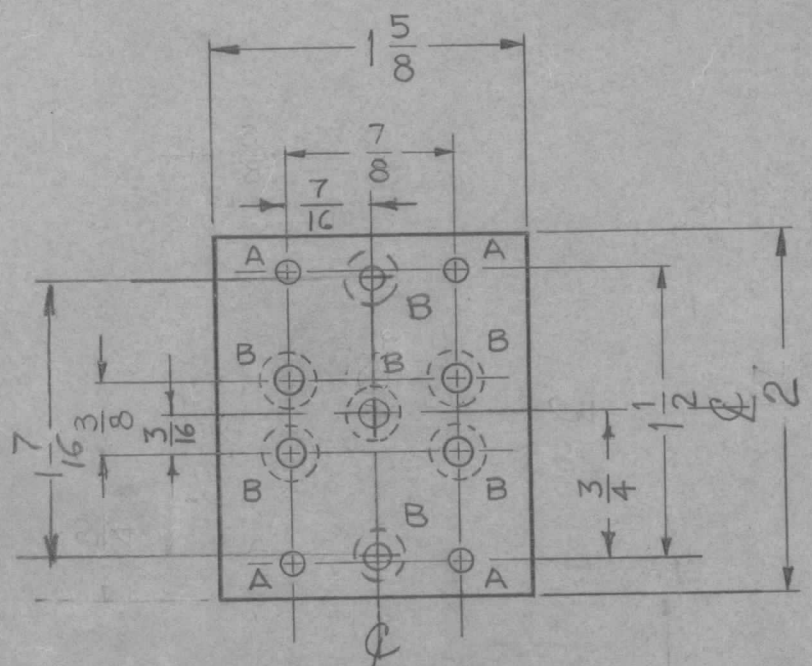
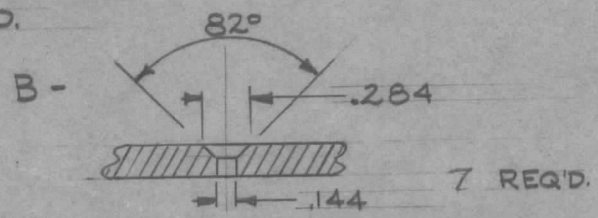


REQ. PER UNIT	USED ON		MS-1576 C
	MODEL	ASS'Y. NO.	
2	GPT 10K		2-18-59
1	AR-116	GPT-40K	2-4-60



For Ref only
 US MS 7073 WITH
 Replacement Relay
 RL201

A-#31 DR.(120) 4-REQ'D.

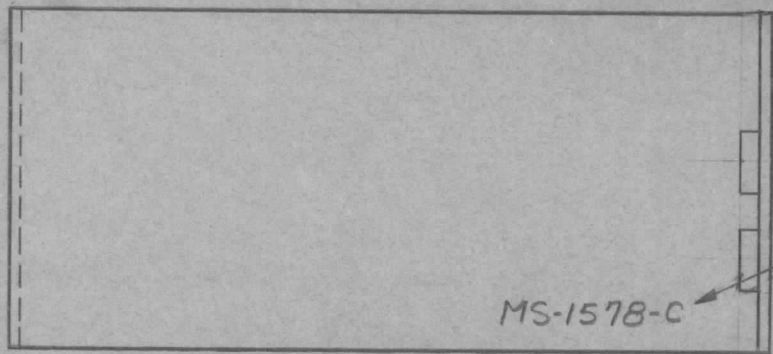


UNLESS OTHERWISE SPECIFIED DIMENSIONS ARE IN INCHES AND INCLUDE CHEMICALLY APPLIED OR PLATED FINISHES		
DECIMALS	TOLERANCES	FRACTIONS
.X ± .05		± 1/64
.XX ± .01		ANGLES
.XXX ± .005		± 0° 30'

CUT HERE
 GUARANTEED
 2-66

D	ISSUE	ITEM	CHANGED FROM	DATE	CH. NO.	DRAFTS	CHECKER	ENG. APP.	REQ. ITEM	PART NO.	DESCRIPTION	SYMBOL	
			TWO 'B' HOLE ADD.								THE TECHNICAL MATERIEL CORP. MAMARONECK, NEW YORK PLATE, RELAY MOUNTING PA BIAS & IPA BIAS	MS-1576 C	
C	1		'B' HOLE QTY WAS 4	9-9-75	21289	<i>WRS</i>	<i>adch</i>	<i>ch</i>	1/8	STOCK SIZE			
B	1		(A) HOLE WAS #33 DR.(113)	7-5-62	6880	V.R.R.	<i>WRS</i>	<i>WRS</i>		ALUMINUM			
A	1		2" WAS 1 7/8	4-1-60	1983	<i>WRS</i>	<i>WRS</i>	<i>WRS</i>		MATERIAL			
									2024-T4	J.C. BIELE			<i>file</i>
TOLERANCES				SCALE:				TYPE & TEMPER		HEATTREAT. SPEC.	DRAWN	CHECKED	FINAL APPROVAL
DEC. DIM. ±				MAXIMUM ALLOWABLE TOLERANCES HAVE BEEN DETERMINED AND ANY DEVIATIONS WILL BE CAUSE FOR REJECTION: REMOVE ALL BURRS AND SHARP EDGES				S-404 IRIDITE			<i>WRS</i>	<i>WRS</i>	
FRAC. DIM. ±								FINISH & SPEC. NO.		ELEC. DES. APP	MECH. DES. APP		
ANGULAR DIM. ±													

REQ. PER UNIT	USED ON			MS-1578	C
	MODEL	ASS'Y. NO.	DATE		
2	GPT 10K	AX-173	2-18-59		

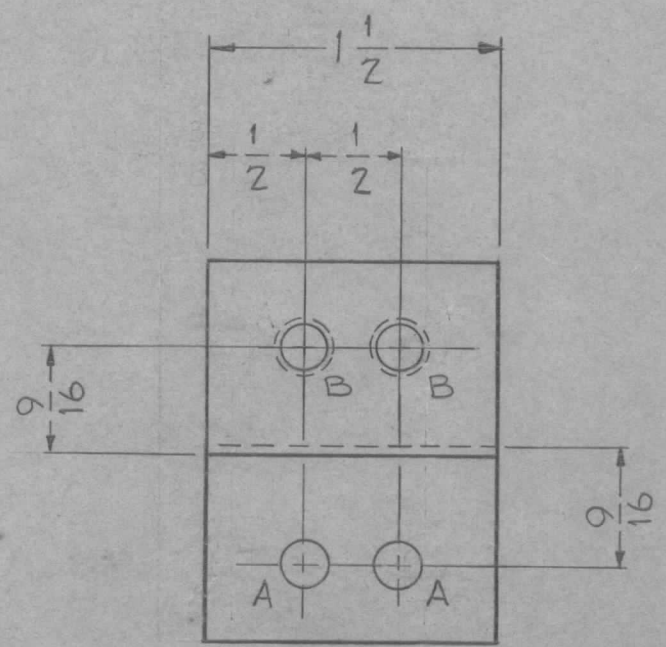
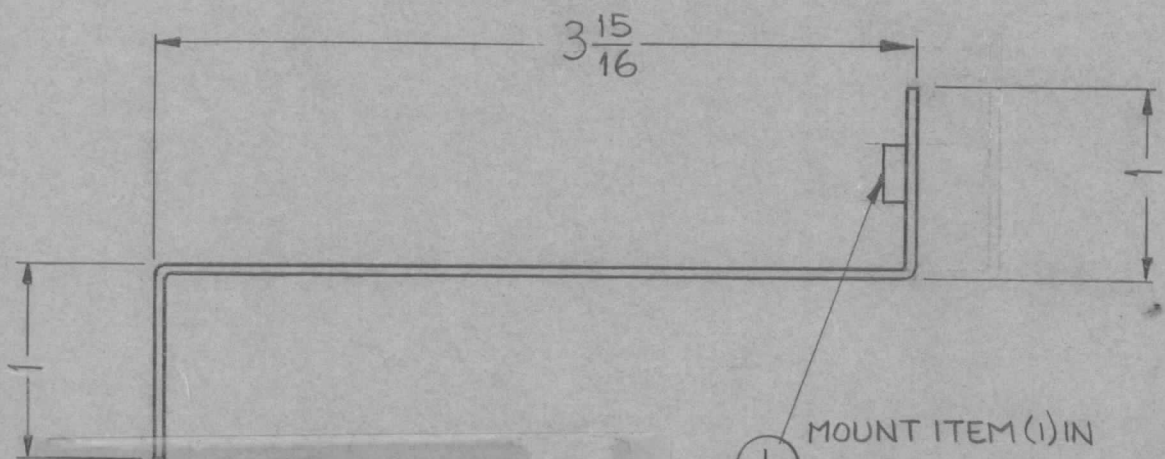


A ~ 1/4 (.250) DIA.
 B ~ .221-.224 DIA.

2 Req.
 2 Req.

METAL STAMP TMC PART NO.
 1/8 HIGH, GOTHIC.

MS-1578-C



① MOUNT ITEM (1) IN
 "A" HOLES AS SHOWN
 AFTER FINISHING.

UNLESS OTHERWISE SPECIFIED DIMENSIONS ARE IN INCHES AND INCLUDE CHEMICALLY APPLIED OR PLATED FINISHES	
DECIMALS	FRACTIONS
.X ± .05	± 1/64
.XX ± .01	ANGLES
.XXX ± .005	± 0° 30'
TOLERANCES	

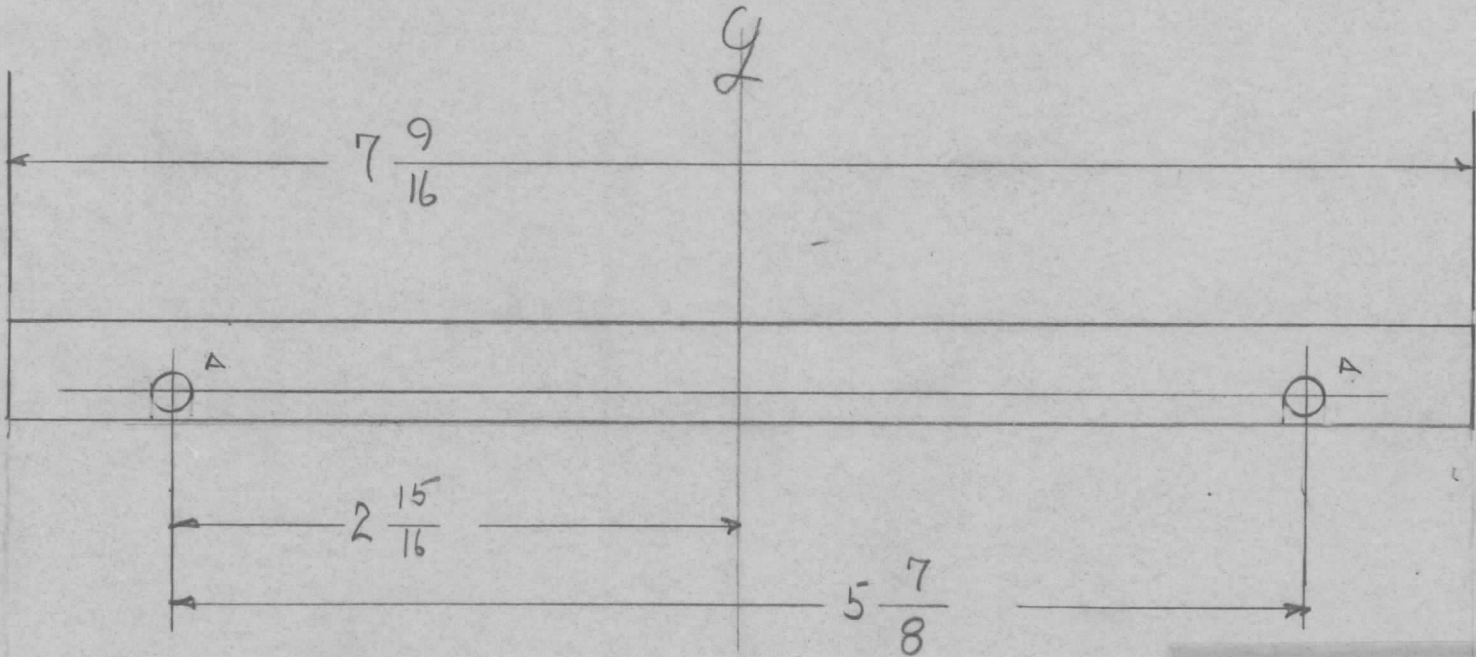
CUT HERE
 GUARANTEED
 2-66

2	1	NT-129-832-4	NUT, ROUND, SWAGE TYPE		B
REQ.	ITEM	PART NO.	DESCRIPTION		SYMBOL
		.081	THE TECHNICAL MATERIEL CORP.		
		ALUMINUM	MAMARONECK, NEW YORK		
			BRACKET, METER PANEL		
			MAIN FRAME		
5052 H-32		J.C. BIELE	file	ARB	
TOLERANCES		SCALE:		FINAL APPROVAL	
DEC. DIM. ±		MAXIMUM ALLOWABLE TOLERANCES HAVE BEEN DETERMINED AND ANY DEVIATIONS WILL BE CAUSE FOR REJECTION: REMOVE ALL BURRS AND SHARP EDGES		MS-1578	
FRAC. DIM. ± 1/64				C	
ANGULAR DIM. ±					
		FINISH & SPEC. NO.		ELEC. DES. APP MECH. DES. APP	

REQ. PER. UNIT	USED ON			MS-1579	A
	MODEL	ASS'Y. NO.	DATE		
2	GPT-10 K	AUX FRAME	2-18-59		

A - 13/64

2 REQ.



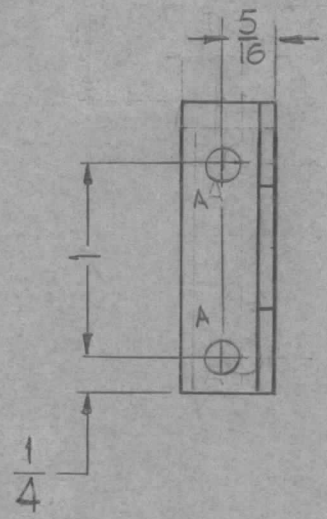
UNLESS OTHERWISE SPECIFIED DIMENSIONS ARE IN INCHES AND INCLUDE CHEMICALLY APPLIED OR PLATED FINISHES	
DECIMALS	FRACTIONS
.X ± .05	± 1/64
.XX ± .01	ANGLES
.XXX ± .005	± 0° 30'
TOLERANCES	

CUT HERE
GUARANTEED
2-66

REQ.	ITEM	PART NO.	DESCRIPTION				SYMBOL
		1/8	THE TECHNICAL MATERIEL CORP.				
		STOCK SIZE	MAMARONECK, NEW YORK				
A	1	ALUMINIUM	Shim				
		MATERIAL	meter box Aux FRAME				
		5052-H32	am	file	ARB		
TOLERANCES		SCALE:	DRAWN	CHECKED	FINAL APPROVAL		
DEC. DIM. ±		MAXIMUM ALLOWABLE TOLERANCES HAVE BEEN DETERMINED AND ANY DEVIATIONS WILL BE CAUSE FOR REJECTION. REMOVE ALL BURRS AND SHARP EDGES			MS-1579 A		
FRAC. DIM. ±							
ANGULAR DIM. ±							
		TYPE & TEMPER	HEATTREAT. SPEC.	ELEC. DES. APP	MECH. DES. APP		
		5404 - YEL. IRIDITE S114 ZINC CHROMATE S115 THE GRAY					
		FINISH & SPEC. NO.					

REQ. PER UNIT	USED ON		
	MODEL	ASS'Y. NO.	DATE
1			

MS-1582 E

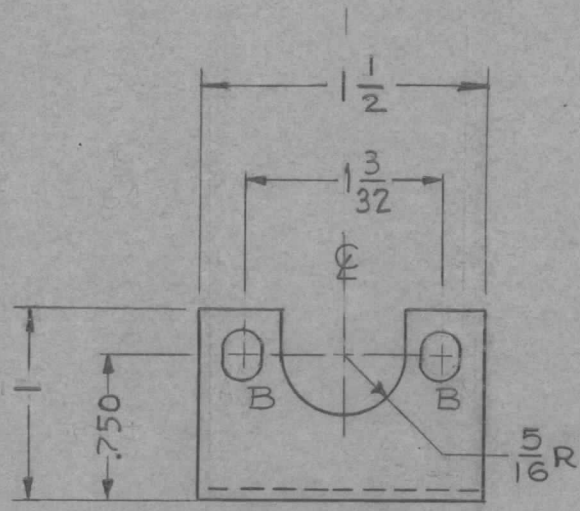
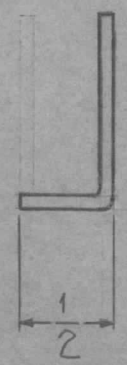


A ~ 3/16 (.187)

2 REQ.

B ~ 11/64 x 11/32 SLOT

2 REQ.



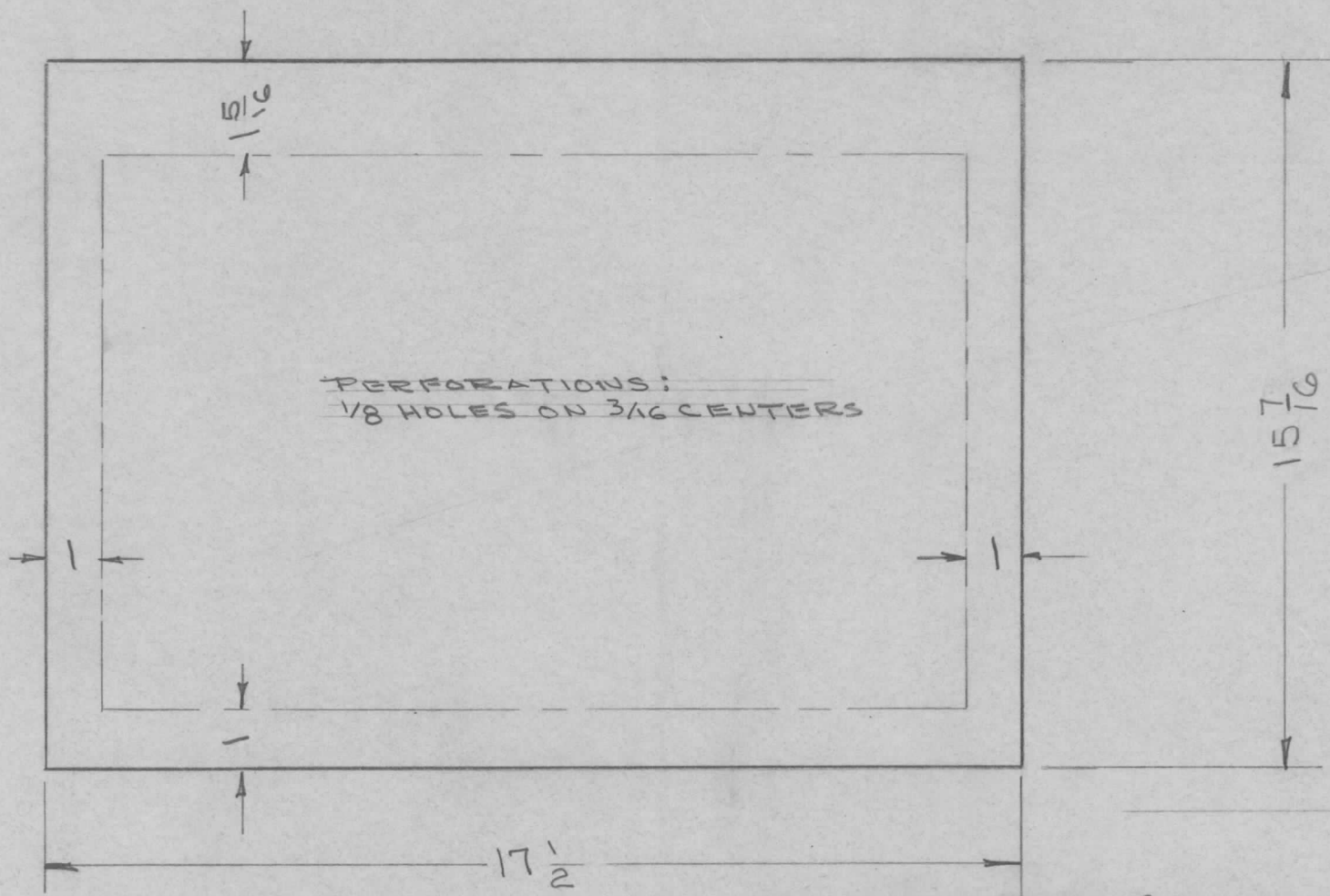
E		DELE. "5/16 REF."; 1/4 WAS 3/16	5-2-66	16185	ALA	<i>[Signature]</i>	<i>[Signature]</i>
D	1	"B"-SLOT WAS 3/16 x 1/4	1.21.65	13326	<i>[Signature]</i>	<i>[Signature]</i>	<i>[Signature]</i>
C	1	5/16 DIM PROP. LOATED	9-11-63	9926	<i>[Signature]</i>	<i>[Signature]</i>	<i>[Signature]</i>
B	1	5/16 REF DIM ADDED	3-28-63	8674	<i>[Signature]</i>	<i>[Signature]</i>	<i>[Signature]</i>
A	2	(2) "B" SLOTS ADDED	7-27-60	2664	<i>[Signature]</i>	<i>[Signature]</i>	<i>[Signature]</i>
A	1	(2) "A" HOLES DELETED					

REQ.	ITEM	PART NO.	DESCRIPTION	SYMBOL
			THE TECHNICAL MATERIEL CORP. MAMARONECK, NEW YORK	
		.064	BRACKET, CONDENSER (CBI)	
		STOCK SIZE		
		ALUMINUM		
		MATERIAL		
		5052-H32	J. C. BIELE	
		TYPE & TEMPER	DRAWN	CHECKED
		HEAT TREAT. SPEC.		FINAL APPROVAL
		S-404 IRIDITE		
		FINISH & SPEC. NO.	ELEC. DES. APP.	MECH. DES. APP.

TOLERANCES		SCALE:
DEC. DIM. ±		MAXIMUM ALLOWABLE TOLERANCES HAVE BEEN DETERMINED AND ANY DEVIATIONS WILL BE CAUSE FOR REJECTION: REMOVE ALL BURRS AND SHARP EDGES
FRAC. DIM. ± 1/64		
ANGULAR DIM. ±		

MS-1582 E

REQ. PER. UNIT	USED ON			MS-1584 A
	MODEL	ASS'Y. NO.	DATE	
1	SB-12A		2-19-59	

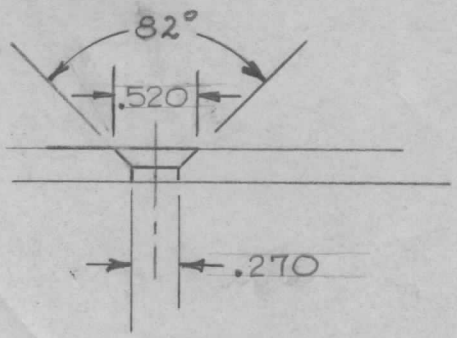


REF: MS 1583 (TOP COVER)

							REQ. ITEM	PART NO.	DESCRIPTION			SYMBOL		
							.051		THE TECHNICAL MATERIEL CORP.					
							STOCK SIZE		MAMARONECK, NEW YORK					
A	1	DIM. CHG. 157/16 WAS 16 3/8	5/11/59	986	awc	file	ALUMINUM	BLANK, TOP COVER						
ISSUE	ITEM	CHANGED FROM	DATE	CH. NO.	DRAFTS	CHECKER	MATERIAL							
TOLERANCES			SCALE: <i>A</i>				5052-H32		file		awc	ARB		
DEC. DIM. ±			MAXIMUM ALLOWABLE TOLERANCES HAVE BEEN DETERMINED AND ANY DEVIATIONS WILL BE CAUSE FOR REJECTION. REMOVE ALL BURRS AND SHARP EDGES				TYPE & TEMPER	HEATTREAT. SPEC.	DRAWN	CHECKED	FINAL APPROVAL			
FRAC. DIM. ± 1/64							ELEC. DES. APP		MECH. DES. APP				MS-1584 A	
ANGULAR DIM. ±														

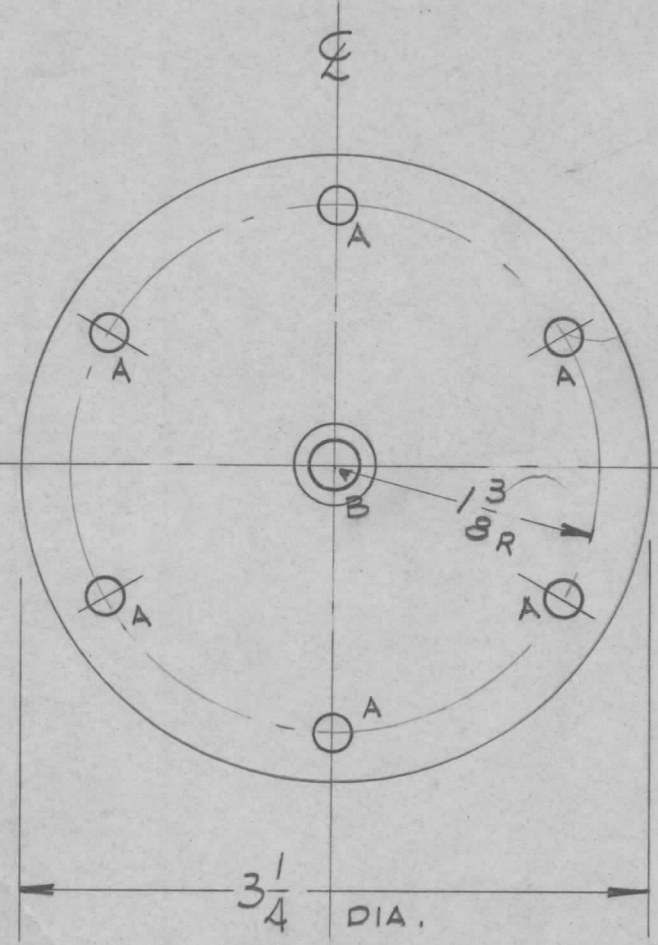
REQ. PER UNIT	USED ON		
	MODEL	ASS'Y. NO.	DATE
3	9PT-101K	AH-102344	2-18-59

MS-1596 A



"B"
1-REQ'D.

DRILL + C'SINK
FOR 1/4-20



HOLES
A - 3/16 DIA 60° APART
REQ'D. 6

REMOVE SHARP
EDGES

ISSUE	ITEM	CHANGED FROM	DATE	CH. NO.	DRAFTS	CHECKER	ENG. APP.	REQ. ITEM	PART NO.	DESCRIPTION	SYMBOL	
								1/8 THICK STOCK SIZE		THE TECHNICAL MATERIEL CORP. MAMARONECK, NEW YORK		
								ALUMINUM		CONDENSER TOP PLATE		
								MATERIAL				
								5052-H32		TORILLO file	APP	
								TYPE & TEMPER	HEAT TREAT. SPEC.	DRAWN	CHECKED	
								SILVER PLATE 10005			20	
								FINISH & SPEC. NO.		ELEC. DES. APP	MECH. DES. APP	
TOLERANCES			SCALE:									
DEC. DIM. ±			MAXIMUM ALLOWABLE TOLERANCES HAVE BEEN DETERMINED AND ANY DEVIATIONS WILL BE CAUSE FOR REJECTION. REMOVE ALL BURRS AND SHARP EDGES									
FRAC. DIM. ±												
ANGULAR DIM. ±												
1/64								MS-1596 A				