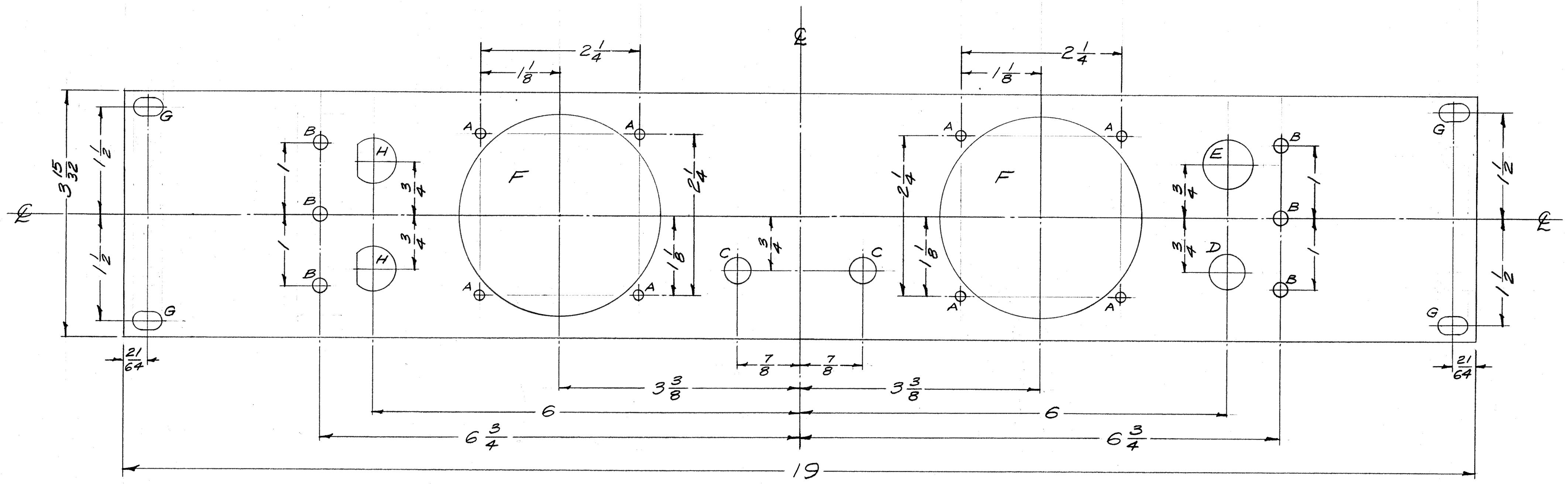


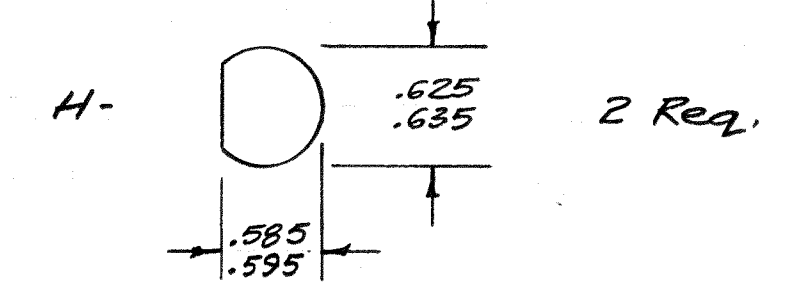
IF IT IS FOUND DESIRABLE TO CHANGE ANY TOLERANCE OR OTHER DETAIL SPECIFIED ON THIS DRAWING NOTIFY THE PURCHASER PROMPTLY.  
 MAXIMUM ALLOWABLE TOLERANCES HAVE BEEN DETERMINED AND DEVIATIONS WILL BE CAUSE FOR REJECTION.  
 REMOVE ALL BURRS AND SHARP EDGES

**NOTICE TO PERSONS RECEIVING THIS DRAWING**  
 THE TECHNICAL MATERIEL CORPORATION claims proprietary right in the material disclosed hereon. This drawing is issued in confidence for engineering information only and may not be reproduced or used to manufacture anything shown hereon without permission from THE TECHNICAL MATERIEL CORPORATION to the user. This drawing is loaned for mutual assistance and is subject to recall at any time.  
 Property of:  
 THE TECHNICAL MATERIEL CORPORATION  
 MAMARONECK, NEW YORK

FRONT VIEW



- A -  $\frac{3}{64}$  (.140) D. 8 Req.
- B -  $\frac{7}{32}$  (.218) D. 6 Req.
- C -  $\frac{3}{8}$  (.375) D. 2 Req.
- D -  $\frac{17}{32}$  (.531) D. 1 Req.
- E -  $\frac{11}{16}$  (.687) D. 1 Req.
- F -  $2 \frac{13}{16}$  (2.812) D. 2 Req.
- G -  $\frac{1}{4} \times \frac{13}{32}$  SLOT 4 Req.



- MACHINING**
1. Lateral Bow of Panel Must be kept to .031 Tolerance.
  2. Mill all Edges.
  3. Holes Must be Drilled.
  4. Panel Must be Free of All Machining Marks, Gouges, & Scratches.

**FINISH NOTE -**  
 S404 YELLOW IRIDITE  
 S114 Zinc Chromate Primer } Front & Edges  
 S115 Smooth Grey Enamel } Only

4 LD-511 Lettering, Rear  
 Ref: 8LD-502 Engraving, Front

1	S-404 YEL. IRIDITE WAS 10/19/59	1001	EMW
1	S-101 CAUSTIC DIP		
ISSUE	CHANGED FROM	DATE	CN. NO. DRAFTS CHECKER ENG. APP.
ALL OTHERS	DEC. DIM. $\pm$ FRAC. DIM. $\pm$ 1/64 ANGULAR DIM. $\pm$	SCALE: FULL DO NOT SCALE	DRILL PUNCH, COMMERCIAL STOCK SIZES AND MANUFACTURERS TOLERANCES ARE NOT INCLUDED.

1	SLM	P/O OPTIOK	2-10-59
REQ PER UNIT	MODEL	PROJECT NO.	DATE
		ASS'Y. NO.	
		USED ON	

REQ. ITEM	PART NO.	DESCRIPTION	SYMBOL
3/16 Thk.		THE TECHNICAL MATERIEL CORP. MAMARONECK, NEW YORK	
Aluminum		PANEL, FRONT,	
MATERIAL	WEIGHT PER PC.	514 ZINC CHROMATE PRIMER } 515 SMOOTH GREY ENAMEL }	
2024-T3	6 7/10/59		
TYPE & TEMPER	DRAWN	ELEC. DES. APP.	MECH. DES. APP.
	HEAT TREAT. SPEC.	CHECKED	FINAL APPROVAL
	See Finish Note		
			MS-1525 A

MS-1525 A