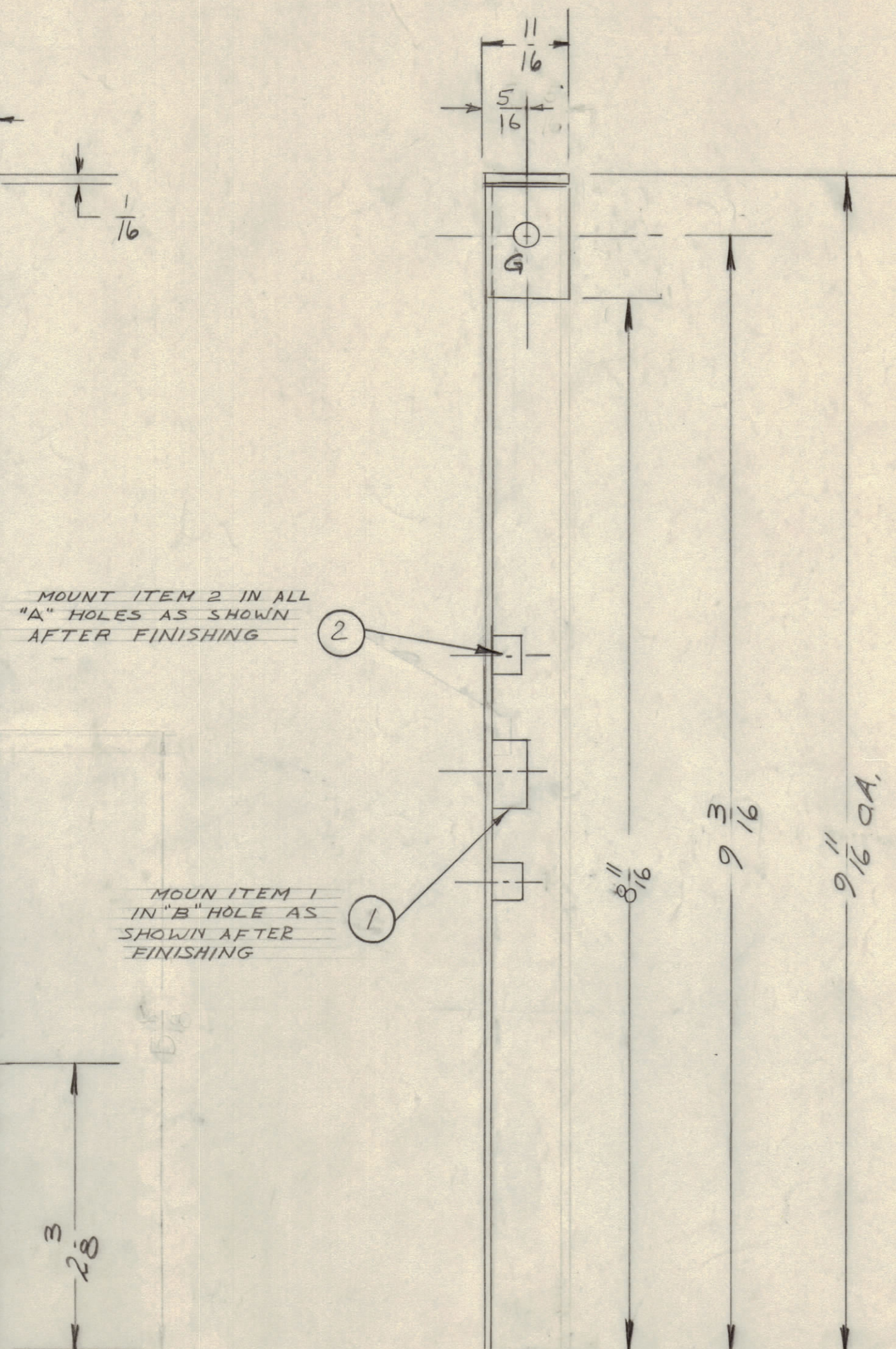
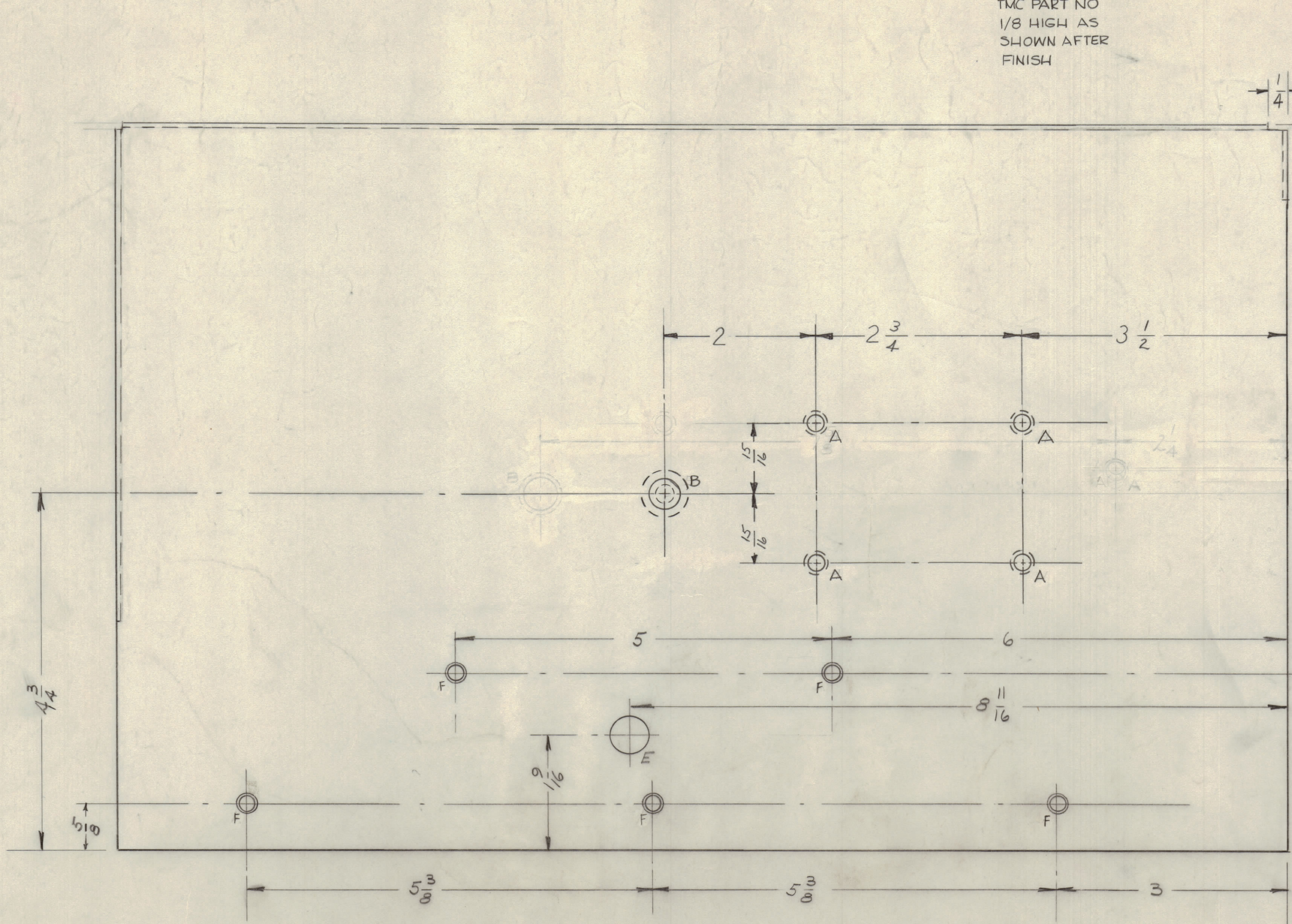
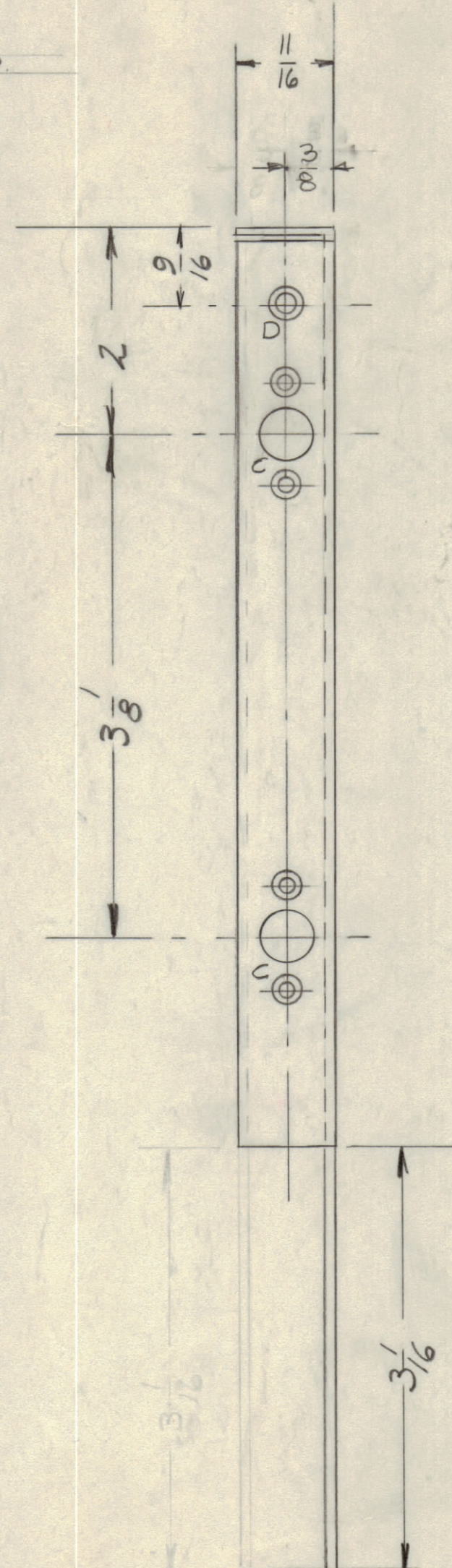
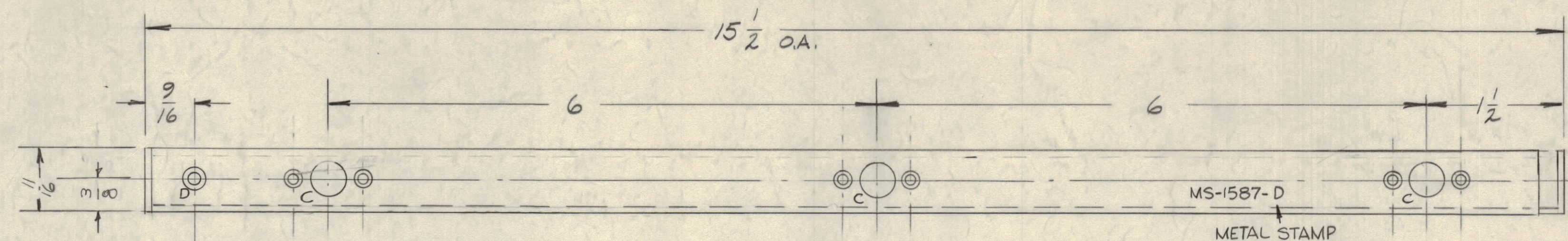
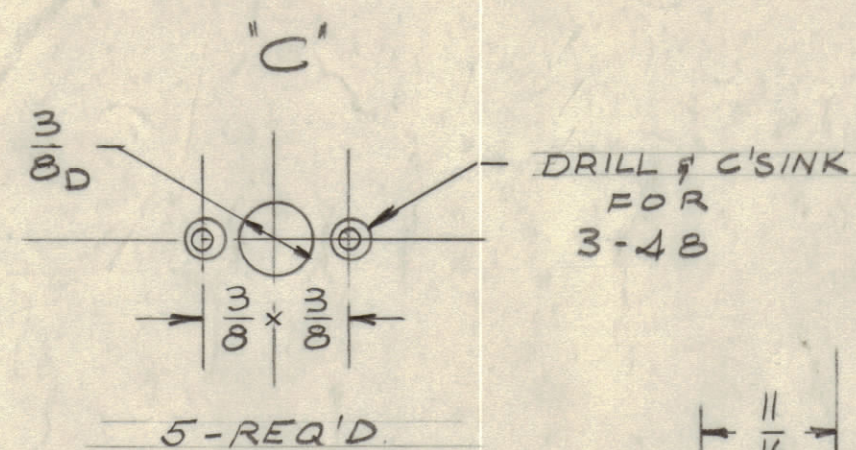


IF IT IS FOUND DESIRABLE TO CHANGE ANY TOLERANCE OR OTHER DETAIL SPECIFIED ON THIS DRAWING NOTIFY THE PURCHASER PROMPTLY.
 MAXIMUM ALLOWABLE TOLERANCES HAVE BEEN DETERMINED AND DEVIATIONS WILL BE CAUSE FOR REJECTION. REMOVE ALL BURRS AND SHARP EDGES



MOUNT ITEM 2 IN ALL "A" HOLES AS SHOWN AFTER FINISHING

MOUNT ITEM 1 IN "B" HOLE AS SHOWN AFTER FINISHING

2

1

MS-1587 D

FINISH NOTE
 FOR CORRECT SHADE OF IRIDITE USE SB-12A CHASSIS AS COLOR CHIP.

HOLES	REQ'D
A - .221-.224 DIA.	4
B - .413-.416 DIA. (NT-129-524-4)	1
C - SEE DETAIL	5
D - C'SINK FOR 6-32	2
E - 1/2 DIA.	1
F - C'SINK FOR 8-32 F.H.S.	5
G - 13/64 DIA.	1
H - .221-.224 DIA.	4

NOTICE TO PERSONS RECEIVING THIS DRAWING
 THE TECHNICAL MATERIEL CORPORATION claims proprietary right in the material disclosed hereon. This drawing is issued in confidence for engineering information only and may not be reproduced or used to manufacture anything shown hereon without permission from THE TECHNICAL MATERIEL CORPORATION to the user. This drawing is loaned for mutual assistance and is subject to recall at any time.
 Property of:
 THE TECHNICAL MATERIEL CORPORATION
 MAMARONECK, NEW YORK

ISSUE ITEM	CHANGED FROM	DATE	CH. NO.	DRAFTER	CHECKER	ENG. APP.
D	(B) HOLE RELOCATED	12-5-59	26315	G.S.		
C	5 NT-129-524-4 ADDED	12-23-59				
B	2 FIVE "A" HOLES FOR 8-32 F.H.S. ADDED	12-23-59				
A	1 FIVE "A" HOLES DELETED	12-23-59				

REQ. ITEM	PART NO.	DESCRIPTION	SYMBOL
2	NT-129-832-4	NUT, ROUND, SWAGE TYPE	A
1	NT-129-524-4	NUT, ROUND SWAGE TYPE	B

.064 THICK
 STOCK SIZE
 ALUMINUM
 MATERIAL WEIGHT PER PC.
 5052-H32
 TYPE & TEMPER
 HEAT TREAT. SPEC.
 SEE NOTE
 FINISH & SPEC. NO.

REQ. PER UNIT	MODEL	PROJECT NO.	ASSY. NO.	DATE
1	SB-12A			2-17-59