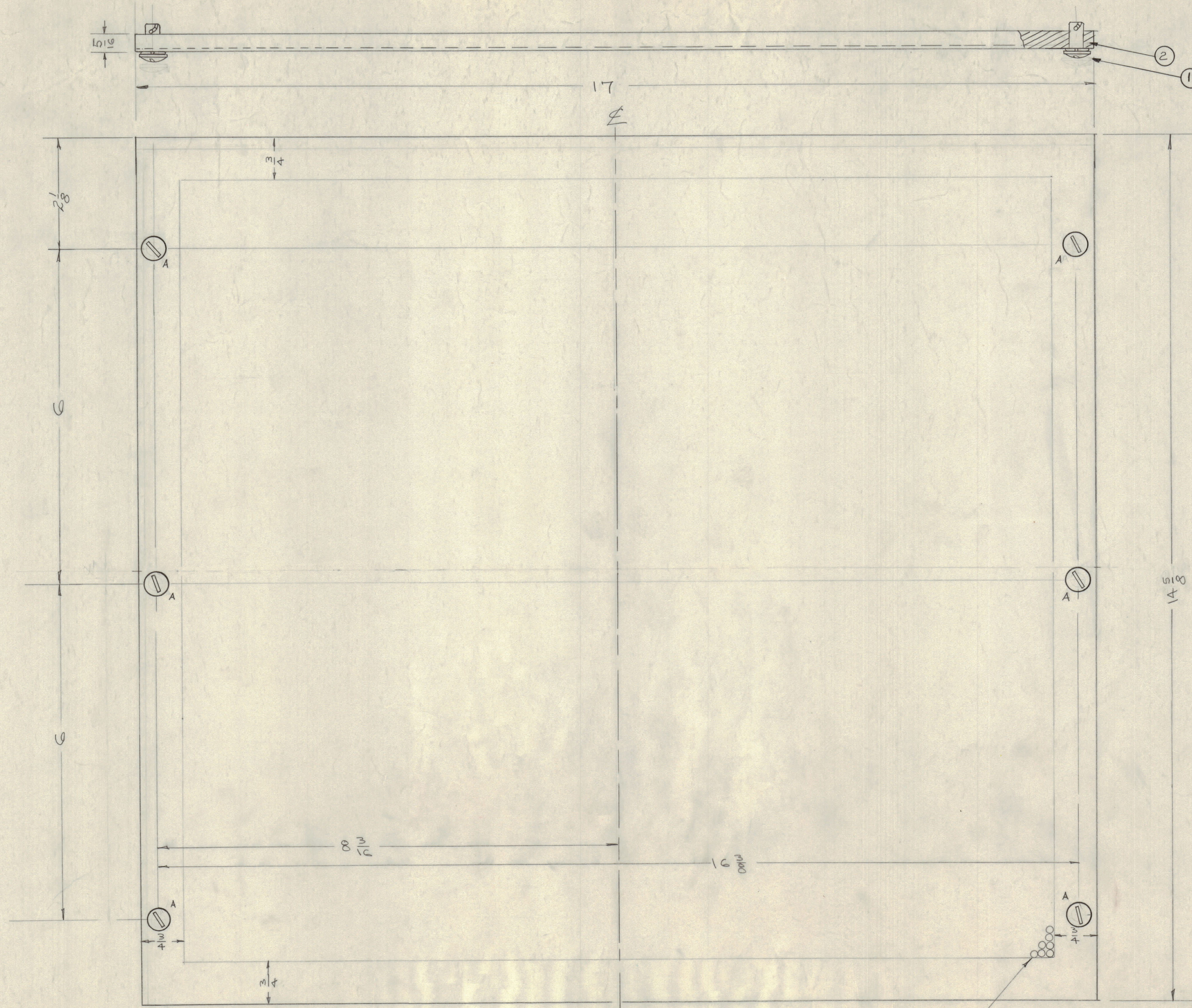


IF IT IS FOUND DESIRABLE TO CHANGE ANY TOLERANCE OR OTHER DETAIL SPECIFIED ON THIS DRAWING NOTIFY THE PURCHASER PROMPTLY.
 MAXIMUM ALLOWABLE TOLERANCES HAVE BEEN DETERMINED AND DEVIATIONS WILL BE CAUSE FOR REJECTION. REMOVE ALL BURRS AND SHARP EDGES



MOUNT IN ALL "A" HOLES AS SHOWN

A - 1/4 (.250) DIA C HOLES

NOTICE TO PERSONS RECEIVING THIS DRAWING:
 THE TECHNICAL MATERIEL CORPORATION claims proprietary right in the material disclosed herein. This drawing is issued in confidence for engineering information only and may not be reproduced or used in manufacture anything shown hereon without permission from THE TECHNICAL MATERIEL CORPORATION. This drawing is loaned for mutual assistance and is subject to recall at any time.
 Property of:
 THE TECHNICAL MATERIEL CORPORATION
 MAMARONECK, NEW YORK

FINISH NOTE:
 FOR CORRECT SHADE OF IRIDITE USE SB-12A CHASSIS AS COLOR CHIP.

PERFORATION: 1/8 HOLES ON 3/16 CENTERS

B	1	ITEMS (1) (2) ADDED	2-1-62	6276	G.S.	<i>[Signature]</i>	<i>[Signature]</i>
A	1	DRILLING 1/8 DIA W/ 15 DEG; ADDING 2/16 DIA. DRILLED #	2/1/59	987	<i>[Signature]</i>	<i>[Signature]</i>	<i>[Signature]</i>
ISSUE	ITEM	CHANGED FROM	DATE	CN. NO.	DRAFTS	CHECKER	ENG. APP.
TOLERANCES		SCALE: <i>[Signature]</i>					
ALL	DEC. DIM. ±	DRILL, PUNCH, COMMERCIAL STOCK					
OTHERS	FRAC. DIM. ±	SIZES AND MANUFACTURERS					
	ANGULAR DIM. ±	TOLERANCES ARE NOT INCLUDED.					

6	2	FS-109-3	RING FASTENER	A
6	1	FS-110-1	STUD FASTENER	A

REF: MS-1584 (BLANK)

REQ. ITEM	PART NO.	DESCRIPTION	SYMBOL
.051		THE TECHNICAL MATERIEL CORP.	
STOCK SIZE		MAMARONECK, NEW YORK	
ALUMINUM		TOP COVER	
MATERIAL	WEIGHT PER PC.		
5052-H32			
TYPE & TEMPER			
HEAT TREAT. SPEC.			
SEE NOTE			
FINISH & SPEC. NO.			

1	SB-12A	PROJECT NO.	ASSY. NO.	2-18-59	DATE
REQ PER UNIT	MODEL	PROJECT NO.	ASSY. NO.	DATE	USED ON

MS-1583 B