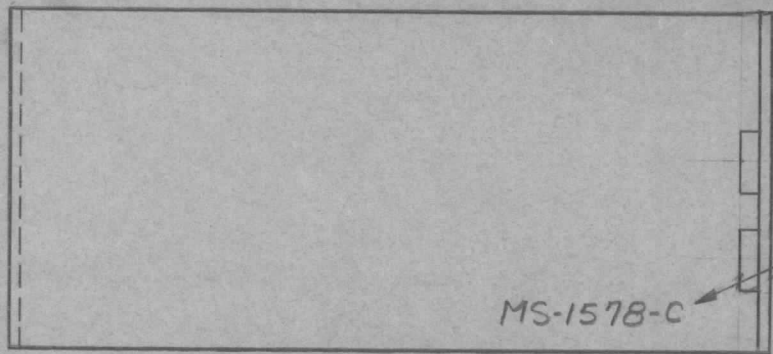


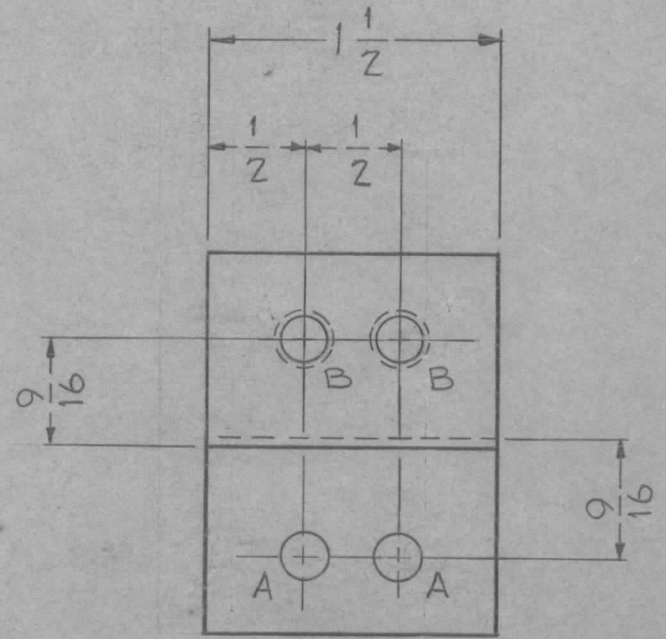
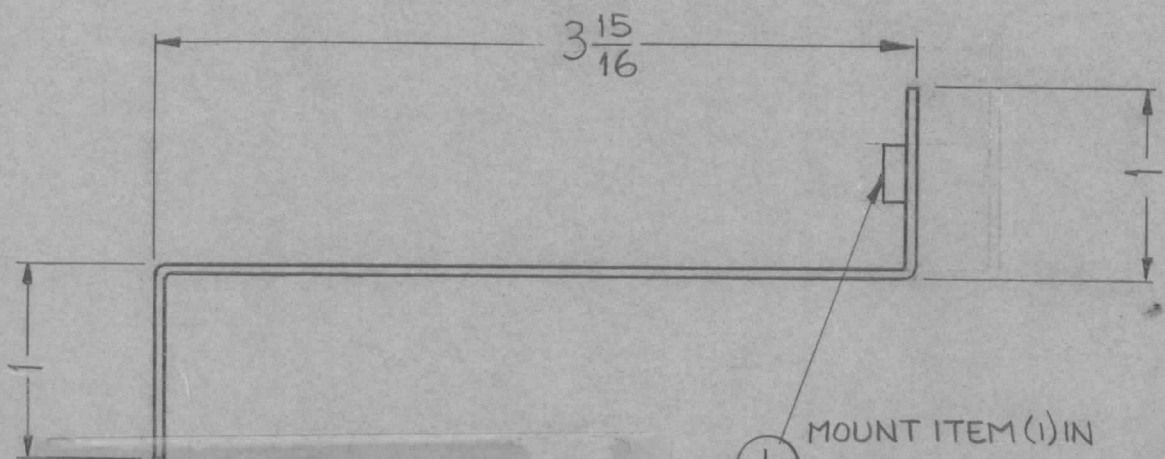
REQ. PER UNIT	USED ON			MS-1578	C
	MODEL	ASS'Y. NO.	DATE		
2	GPT 10K	AX-173	2-18-59		



A ~ 1/4 (.250) DIA.
 B ~ .221-.224 DIA.

2 Req.
 2 Req.

METAL STAMP TMC PART NO.
 1/8 HIGH, GOTHIC.



① MOUNT ITEM (1) IN
 "A" HOLES AS SHOWN
 AFTER FINISHING.

UNLESS OTHERWISE SPECIFIED DIMENSIONS ARE IN INCHES AND INCLUDE CHEMICALLY APPLIED OR PLATED FINISHES	
DECIMALS .X ± .05 .XX ± .01 .XXX ± .005	FRACTIONS ± 1/64 ANGLES ± 0° 30'
TOLERANCES	

CUT HERE
 GUARANTEED
 2-66

ISSUE	ITEM	CHANGED FROM	DATE	CH. NO.	DRAFTS	CHECKER	ENG. APP.
C	2	(2) "A" HOLES DELETED	3-12-63	8514			
	1	(2) "B" HOLES & ITEM (D) ADDED					
B	1	(4) "B" HOLES WERE 1/16 DIA	10-12-62	7416			
A	1	S404- IRIDIUM WAS S101- CAUSTIC DIP	12-8 59	1001			EMN
TOLERANCES			SCALE:				
DEC. DIM. ±			MAXIMUM ALLOWABLE TOLERANCES HAVE BEEN DETERMINED AND ANY DEVIATIONS WILL BE CAUSE FOR REJECTION: REMOVE ALL BURRS AND SHARP EDGES				
FRAC. DIM. ± 1/64							
ANGULAR DIM. ±							

2	1	NT-129-832-4	NUT, ROUND, SWAGE TYPE	B
REQ.	ITEM	PART NO.	DESCRIPTION	SYMBOL
			.081	
			STOCK SIZE	
			ALUMINUM	
			MATERIAL	
			5052 H-32	
			J.C. BIELE	
			DRAWN	
			CHECKED	
			FINAL APPROVAL	
			MS-1578	C
TYPE & TEMPER			HEAT TREAT. SPEC.	
S404-VEL-IRIDIUM M-114 ZINC CHEMATE M-115 TMC GRAY				
FINISH & SPEC. NO.			ELEC. DES. APP	MECH. DES. APP